

REV	DATE	DESCRIPTION	ECO	BY	C.H.K.
E	2023-06-30 01:00:00 EDT	UPDATED AS PER NO	230627031427	YR	RA

CATALOG NUMBER	STRANDED COPPER CONDUCTOR ACCOMMODATED			BOLT SIZE	METRIC BOLT SIZE	DIMENSIONS							
	CODE (AWG)	NAVY	METRIC SIZE (CLASS 2)			B	C	K DIA.	L	N	O.D.	T REF.	Z MIN.
YA4CTC10	#4 AWG	40	-----	#10	M5	1.12 [28]	.50 [13]	.21 [5]	1.94 [49]	.25 [6]	.34 [9]	.09 [2]	.27 [7]
YA4C				1/4	M6	↑	.50 [13]	.27 [7]	1.87 [47]	.25 [6]	↑	.09 [2]	.25 [6]
YA4CTC38				3/8	-----	↓	.58 [15]	.40 [10]	2.25 [57]	.41 [10]	↓	.08 [2]	.42 [11]
YA4CN				1/2	M12	1.12 [28]	.83 [21]	.56 [14]	2.69 [68]	.63 [16]	.34 [9]	.12 [3]	.64 [16]
YA3CTC14	#3 AWG #2 SOL	50	25mm <sup>2</sup> STR [6.6]	1/4	M6	1.25 [32]	.55 [14]	.27 [7]	2.23 [57]	.31 [8]	.38 [10]	.09 [2]	.33 [8]
YA3C				5/16	-----	↑	.55 [14]	.33 [8]	2.30 [58]	.34 [9]	↑	.09 [2]	.36 [9]
YA3CTC38				3/8	-----	↓	.58 [15]	.40 [10]	2.42 [61]	.41 [10]	↓	.08 [2]	.42 [11]
YA3CN				1/2	M12	1.25 [32]	.83 [21]	.56 [14]	2.86 [73]	.63 [16]	.38 [10]	.12 [3]	.64 [16]
YA4CU	#4 AWG	40	-----	-----	-----	1.12 [28]	.49 [12]	-----	2.00 [51]	.25 [6]	.34 [9]	.08 [2]	.25 [6]

CONNECTOR SIZE	TOLERANCES					
	B	C	K DIA.	L	N	O.D.
-8C THRU -25	±.06	+ .04 - .02	±.02	±.09	±.03	±.01
-26 THRU -34	±.08	+ .04 - .06	±.02	±.12	±.03	±.01
-35 AND UP	±.09	±.06	±.02	±.15	±.06	±.01

TOLERANCE BLOCK

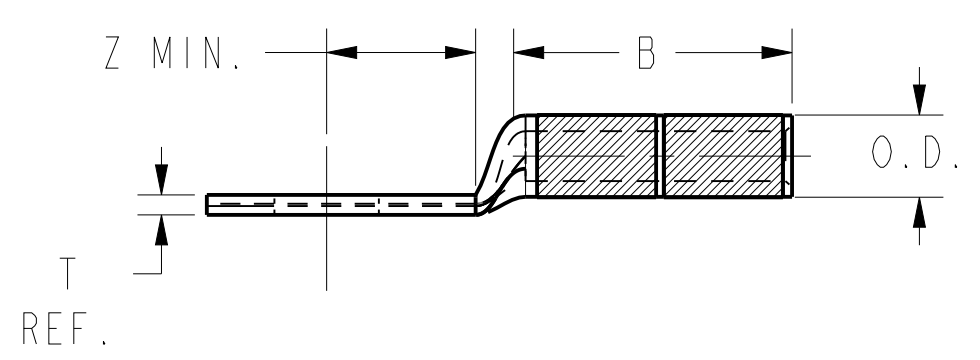
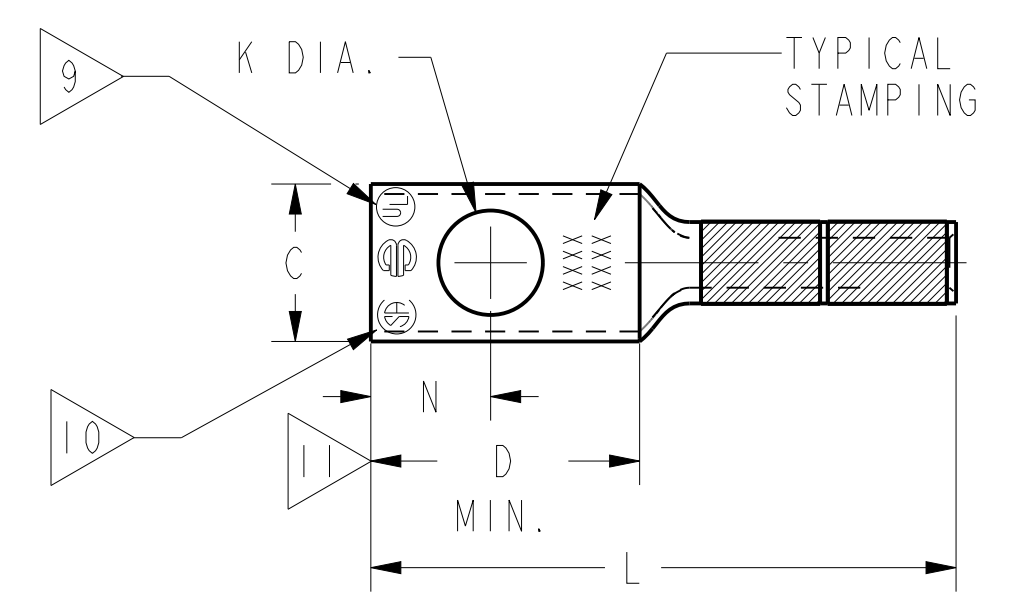
INSTALLATION TOOLING (# CRIMPS)

CATALOG NO.	COLOR CODE	DIE INFORMATION		MECHANICAL				HYDRAULIC					DIELESS (# CRIMPS)		WIRE STRIP LENGTH		
		DIE INDEX	TYPE	YIMRTC	OUR840	MD6 MD7	MD6--R2 MD7-34R	PATMD6 PAT600 Y500CT	Y34A Y34B Y34BH	Y35, Y39 Y750, PAT750	Y46 PAT46	Y45	Y48B	Y60BHU		MECHANICAL	HYDRAULIC
YA4CTC10 YA4C YA4CTC38 YA4CN	GRAY	8 346	GRAY DIE SET NEST INDENTOR	GRAY (4)	X4CRT(2)	W4CRT(2) W4CVT(2)	W4CRT(2) W4CVT(2)	W4CRT(2) W4CVT(2)	----- B4CD(1) A4CD(1) Y34PR	U4CRT(2) U6CABT(2) U4CD-1(1) Y34PR	U4CRT(2) U6CABT(2) U4CD-1(1) Y34PR	U4CRT(2) U6CABT(2) U4CD-1(1) Y34PR	----- ----- ----- -----	----- ----- ----- -----	MY29-3(2) MY29-11(2) MRC840(2)	PAT81KFT(1) Y81KFT(1) PAT4PC834(1) Y4PC834(1) PAT644(1) Y644(1)	1-3/16"
YA3CTC14 YA3C YA3CTC38 YA3CN	WHITE	9	WHITE DIE SET NEST INDENTOR	WHITE (4)	W3CRT(2)	W3CRT(2)	W3CRT(2)	W3CRT(2)	----- B3CD(1) A3CD(1) Y34PR	U3CRT(2) U3CD-1(1) Y34PR	U3CRT(2) U3CD-1(1) Y34PR	U3CRT(2) U3CD-1(1) Y34PR	----- ----- ----- -----	----- ----- ----- -----	MY29-3(2) MY29-11(2)	PAT81KFT(2) Y81KFT(2) PAT4PC834(2) Y4PC834(2) PAT644(1) Y644(1)	1-5/16"

NOTES:

- MATERIAL : COPPER TUBING.
- FINISH: ELECTRO-TIN PLATED.
- CATALOG # PT6515 ADAPTOR IS REQUIRED TO USE "U" DIES IN Y45 SERIES TOOLS.
- CATALOG # PUADP-1 ADAPTOR IS REQUIRED TO USE "U" DIES IN Y46 SERIES TOOLS.
- Y35P3 INDENTOR ADAPTOR REQUIRED FOR Y34PR INDENTOR.
- PERMANENT DIE IN TOOLING.
- DIMENSIONS IN BRACKETS [ ] ARE IN MILLIMETERS ROUNDED OFF TO THE NEAREST MILLIMETER, UNLESS OTHERWISE NOTED, AND ARE FOR REFERENCE ONLY.
- FOR USE BY CUSTOMERS THAT HAVE THIS HYPRESS™ NO NEW Y34A HYPRESS™ TOOLS ARE BEING PROCESSED. Y34A USES A--D NEST DIES ONLY.
- CONNECTORS ARE UL LISTED; UNDRILLED VERSIONS ARE NOT UL LISTED.
- CONNECTORS ARE CSA CERTIFIED; UNDRILLED VERSIONS ARE NOT CSA CERTIFIED.
- FOR ALL OTHER UNDRILLED VERSIONS ADD SUFFIX "U" TO END OF CATALOG NUMBER. FOR ALL OTHER UNDRILLED VERSIONS, USE D MIN. = N MAX. + Z MIN.
- "X", "W-RT", "W-VT", "U", & "L" DIE SETS ARE COLOR CODED. "A", "B", AND "C" DIES ARE NOT COLOR CODED. NESTS AND INDENTOR TYPE ARE NOT COLOR CODED.

- 13 FOR OIL TIGHT SEALED VERSIONS AND SUFFIX "DT" OR "DTS" TO CATALOG NUMBER.
- 14 YA4CDT AND YA4CDTS ARE THE SAME DIMENSIONALLY AS THE YA4CU BUT USES THE "K DIA"
- 15 USE SUFFIX "NK" FOR NICKEL PLATING.



REFERENCE: SD17179 (YA-2, YA-4)  
SE209241

REV: CREO\_08/10/21

TO ORDER BURNDY@PRODUCTS CALL		HYPUG™	
UNITED STATES: 1-800-346-4175 (LONDONDERRY, NH)		ITEM NO: N/A	CAT. NO: YA4C- (TABLE)
CANADA: 1-800-361-6975 (QUEBEC) 1-800-387-6487 (ALL OTHER PROVINCES)		DRAWN BY: C. RACANO 8/16/77	CHECKER: CAR 6/16/77
FOR PRODUCT INFO: <a href="http://www.burndy.com">http://www.burndy.com</a>		DSN APPVL: LB 6/24/77	MFG APPVL: N/A --
		QC APPVL: C. ACKERMAN 9/08/94	MKT APPVL: T. NELSON 9/7/94
		PROD FAM: --	SCALE: NTS
		PROJECT #: FPN1702013	SIZE: D
		DOCUMENT TYPE: Sales	DRAWING NO: SD079849
		REL LEVEL: Released	REV: E
		SHEET 2 OF 10	