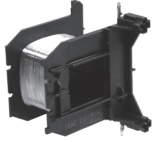


## Renewal Parts

## XTCERENC\_



## Replacement Coil—Frame C

| Voltage       | Coil Suffix | Catalog Number |
|---------------|-------------|----------------|
| 110/50 120/60 | A           | XTCERENCOILCA  |
| 110–130 Vdc   | AD          | XTCERENCOILCAD |
| 220/50 240/60 | B           | XTCERENCOILCB  |
| 200–240 Vdc   | BD          | XTCERENCOILCBD |
| 415/50 480/60 | C           | XTCERENCOILCC  |
| 600/60        | D           | XTCERENCOILCD  |
| 208/60        | E           | XTCERENCOILCE  |
| 230/50        | F           | XTCERENCOILCF  |
| 190/50 220/60 | G           | XTCERENCOILCG  |
| 240/50 277/60 | H           | XTCERENCOILCH  |
| 380/50 440/60 | L           | XTCERENCOILCL  |
| 400/50        | N           | XTCERENCOILCN  |
| 380/60        | P           | XTCERENCOILCP  |
| 12/50 12/60   | R           | XTCERENCOILCR  |
| 12–14 Vdc     | RD          | XTCERENCOILCRD |
| 24/50 24/60   | T           | XTCERENCOILCT  |
| 24–27 Vdc     | TD          | XTCERENCOILCTD |
| 42/50 48/60   | W           | XTCERENCOILCW  |
| 48–60 Vdc     | WD          | XTCERENCOILCWD |
| 48/50         | Y           | XTCERENCOILCY  |

## Replacement Coil—Frame D

| Voltage       | Coil Suffix | Catalog Number |
|---------------|-------------|----------------|
| 110/50 120/60 | A           | XTCERENCOILDA  |
| 110–130 Vdc   | AD          | XTCERENCOILDAD |
| 220/50 240/60 | B           | XTCERENCOILDB  |
| 200–240 Vdc   | BD          | XTCERENCOILDBD |
| 415/50 480/60 | C           | XTCERENCOILDC  |
| 600/60        | D           | XTCERENCOILDD  |
| 208/60        | E           | XTCERENCOILDE  |
| 230/50        | F           | XTCERENCOILDF  |
| 190/50 220/60 | G           | XTCERENCOILDG  |
| 240/50 277/60 | H           | XTCERENCOILDH  |
| 380/50 440/60 | L           | XTCERENCOILDL  |
| 400/50        | N           | XTCERENCOILDN  |
| 380/60        | P           | XTCERENCOILD P |
| 12/50 12/60   | R           | XTCERENCOILDR  |
| 12–14 Vdc     | RD          | XTCERENCOILDRD |
| 24/50 24/60   | T           | XTCERENCOILDT  |
| 24–27 Vdc     | TD          | XTCERENCOILDTD |
| 42/50 48/60   | W           | XTCERENCOILDW  |
| 48–60 Vdc     | WD          | XTCERENCOILDWD |
| 48/50         | Y           | XTCERENCOILDY  |

## Replacement Coil—Frame F ①

| Voltage       | Coil Suffix | Catalog Number |
|---------------|-------------|----------------|
| 110/50 120/60 | A           | XTCERENCOILFA  |
| 110–130 Vdc   | AD          | XTCERENCOILFAD |
| 220/50 240/60 | B           | XTCERENCOILFB  |
| 200–240 Vdc   | BD          | XTCERENCOILFBD |
| 415/50 480/60 | C           | XTCERENCOILFC  |
| 600/60        | D           | XTCERENCOILFD  |
| 208/60        | E           | XTCERENCOILFE  |
| 230/50        | F           | XTCERENCOILFF  |
| 190/50 220/60 | G           | XTCERENCOILFG  |
| 240/50 277/60 | H           | XTCERENCOILFH  |
| 380/50 440/60 | L           | XTCERENCOILFL  |
| 400/50        | N           | XTCERENCOILFN  |
| 380/60        | P           | XTCERENCOILFP  |
| 12/50 12/60   | R           | XTCERENCOILFR  |
| 24/50 24/60   | T           | XTCERENCOILFT  |
| 24–27 Vdc     | TD          | XTCERENCOILFTD |
| 42/50 48/60   | W           | XTCERENCOILFW  |
| 48–60 Vdc     | WD          | XTCERENCOILFWD |
| 48/50         | Y           | XTCERENCOILFY  |

## Replacement Coil—Frame G ②

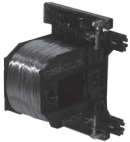
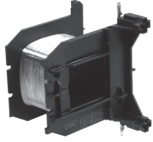
| Voltage        | Coil Suffix | Catalog Number |
|----------------|-------------|----------------|
| 100–120V 50/60 | A           | XTCERENCOILGA  |
| 110–130 Vdc    | AD          | XTCERENCOILGAD |
| 190–240V 50/60 | B           | XTCERENCOILGB  |
| 200–240 Vdc    | BD          | XTCERENCOILGBD |
| 480–500V 50/60 | C           | XTCERENCOILGC  |
| 380–440V 50/60 | L           | XTCERENCOILGL  |
| 4/50 24/60     | T           | XTCERENCOILGT  |
| 24–27 Vdc      | TD          | XTCERENCOILGTD |
| 42–48V 50/60   | W           | XTCERENCOILGW  |
| 48–60 Vdc      | WD          | XTCERENCOILGWD |

## Notes

- ① Frame F replacement coils can only be used with contactors having the following date codes: DC coils, 2706 or later; AC coils, 4706 or later.
- ② Frame G replacement coils can only be used with contactors having date codes of 2706 or later.

## Renewal Parts

## XTCERENC\_



## Replacement Coil—Frame C

| Voltage       | Coil Suffix | Catalog Number |
|---------------|-------------|----------------|
| 110/50 120/60 | A           | XTCERENCOILCA  |
| 110–130 Vdc   | AD          | XTCERENCOILCAD |
| 220/50 240/60 | B           | XTCERENCOILCB  |
| 200–240 Vdc   | BD          | XTCERENCOILCBD |
| 415/50 480/60 | C           | XTCERENCOILCC  |
| 600/60        | D           | XTCERENCOILCD  |
| 208/60        | E           | XTCERENCOILCE  |
| 230/50        | F           | XTCERENCOILCF  |
| 190/50 220/60 | G           | XTCERENCOILCG  |
| 240/50 277/60 | H           | XTCERENCOILCH  |
| 380/50 440/60 | L           | XTCERENCOILCL  |
| 400/50        | N           | XTCERENCOILCN  |
| 380/60        | P           | XTCERENCOILCP  |
| 12/50 12/60   | R           | XTCERENCOILCR  |
| 12–14 Vdc     | RD          | XTCERENCOILCRD |
| 24/50 24/60   | T           | XTCERENCOILCT  |
| 24–27 Vdc     | TD          | XTCERENCOILCTD |
| 42/50 48/60   | W           | XTCERENCOILCW  |
| 48–60 Vdc     | WD          | XTCERENCOILCWD |
| 48/50         | Y           | XTCERENCOILCY  |

## Replacement Coil—Frame D

| Voltage       | Coil Suffix | Catalog Number |
|---------------|-------------|----------------|
| 110/50 120/60 | A           | XTCERENCOILDA  |
| 110–130 Vdc   | AD          | XTCERENCOILDAD |
| 220/50 240/60 | B           | XTCERENCOILDB  |
| 200–240 Vdc   | BD          | XTCERENCOILDBD |
| 415/50 480/60 | C           | XTCERENCOILDC  |
| 600/60        | D           | XTCERENCOILDD  |
| 208/60        | E           | XTCERENCOILDE  |
| 230/50        | F           | XTCERENCOILDF  |
| 190/50 220/60 | G           | XTCERENCOILDG  |
| 240/50 277/60 | H           | XTCERENCOILDH  |
| 380/50 440/60 | L           | XTCERENCOILDL  |
| 400/50        | N           | XTCERENCOILDN  |
| 380/60        | P           | XTCERENCOILD P |
| 12/50 12/60   | R           | XTCERENCOILDR  |
| 12–14 Vdc     | RD          | XTCERENCOILDRD |
| 24/50 24/60   | T           | XTCERENCOILDT  |
| 24–27 Vdc     | TD          | XTCERENCOILDTD |
| 42/50 48/60   | W           | XTCERENCOILDW  |
| 48–60 Vdc     | WD          | XTCERENCOILDWD |
| 48/50         | Y           | XTCERENCOILDY  |

## Replacement Coil—Frame F ①

| Voltage       | Coil Suffix | Catalog Number |
|---------------|-------------|----------------|
| 110/50 120/60 | A           | XTCERENCOILFA  |
| 110–130 Vdc   | AD          | XTCERENCOILFAD |
| 220/50 240/60 | B           | XTCERENCOILFB  |
| 200–240 Vdc   | BD          | XTCERENCOILFBD |
| 415/50 480/60 | C           | XTCERENCOILFC  |
| 600/60        | D           | XTCERENCOILFD  |
| 208/60        | E           | XTCERENCOILFE  |
| 230/50        | F           | XTCERENCOILFF  |
| 190/50 220/60 | G           | XTCERENCOILFG  |
| 240/50 277/60 | H           | XTCERENCOILFH  |
| 380/50 440/60 | L           | XTCERENCOILFL  |
| 400/50        | N           | XTCERENCOILFN  |
| 380/60        | P           | XTCERENCOILFP  |
| 12/50 12/60   | R           | XTCERENCOILFR  |
| 24/50 24/60   | T           | XTCERENCOILFT  |
| 24–27 Vdc     | TD          | XTCERENCOILFTD |
| 42/50 48/60   | W           | XTCERENCOILFW  |
| 48–60 Vdc     | WD          | XTCERENCOILFWD |
| 48/50         | Y           | XTCERENCOILFY  |

## Replacement Coil—Frame G ②

| Voltage        | Coil Suffix | Catalog Number |
|----------------|-------------|----------------|
| 100–120V 50/60 | A           | XTCERENCOILGA  |
| 110–130 Vdc    | AD          | XTCERENCOILGAD |
| 190–240V 50/60 | B           | XTCERENCOILGB  |
| 200–240 Vdc    | BD          | XTCERENCOILGBD |
| 480–500V 50/60 | C           | XTCERENCOILGC  |
| 380–440V 50/60 | L           | XTCERENCOILGL  |
| 4/50 24/60     | T           | XTCERENCOILGT  |
| 24–27 Vdc      | TD          | XTCERENCOILGTD |
| 42–48V 50/60   | W           | XTCERENCOILGW  |
| 48–60 Vdc      | WD          | XTCERENCOILGWD |

## Notes

- ① Frame F replacement coils can only be used with contactors having the following date codes: DC coils, 2706 or later; AC coils, 4706 or later.
- ② Frame G replacement coils can only be used with contactors having date codes of 2706 or later.