

This high-quality Cat 6 RJ45 Keystone Connector in blue is designed for use in all Keystone Wall Plates. The standard RCA front jack connects to Cat5, Cat5e, or Cat6 cables terminated with RJ-45 plugs. The vertical design simplifies punchdown termination, while rear retention caps ensure secure wire connections. It meets Category 6 standards described in TIA/EIA-568-B.2.

## Features & Benefits

Standard RCA front jack	Connects to Cat5, Cat5e, or Cat6 cables terminated with RJ-45 plugs Rear retention caps ensure secure wire termination
Vertical design for easy punchdown termination	T568A and T568B wiring labels included
Meets Category 6 described in TIA/EIA-568-B.2	Insertion and extraction life is 750 Cycles Min
Jack housing is high-impact, flame resistant plastic, UL 94V-0	Spring wire is phosphor bronze alloy plated with 50 micro-inch of gold over 100 micro-inches of nickel

## Specifications

### General Info

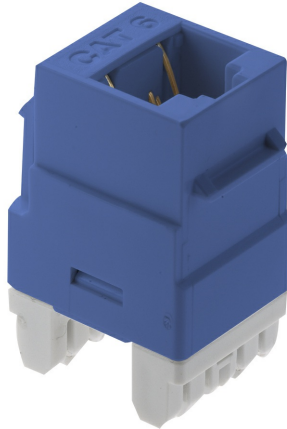
Product Line	On-Q	Color	Blue
UPC Number	804428024415	Country Of Origin	Taiwan, Province Of China

### Dimensions

Product Width US	0.64 in	Product Height US	0.87 in
Product Length US	1.28 in		

### Technical Information

Termination Style	Punchdown	Cable Type	Cat6
-------------------	-----------	------------	------



This high-quality Cat 6 RJ45 Keystone Connector in blue is designed for use in all Keystone Wall Plates. The standard RCA front jack connects to Cat5, Cat5e, or Cat6 cables terminated with RJ-45 plugs. The vertical design simplifies punchdown termination, while rear retention caps ensure secure wire connections. It meets Category 6 standards described in TIA/EIA-568-B.2.

## Features & Benefits

Standard RCA front jack	Connects to Cat5, Cat5e, or Cat6 cables terminated with RJ-45 plugs Rear retention caps ensure secure wire termination
Vertical design for easy punchdown termination	T568A and T568B wiring labels included
Meets Category 6 described in TIA/EIA-568-B.2	Insertion and extraction life is 750 Cycles Min
Jack housing is high-impact, flame resistant plastic, UL 94V-0	Spring wire is phosphor bronze alloy plated with 50 micro-inch of gold over 100 micro-inches of nickel

## Specifications

### General Info

Product Line	On-Q	Color	Blue
UPC Number	804428024415	Country Of Origin	Taiwan, Province Of China

### Dimensions

Product Width US	0.64 in	Product Height US	0.87 in
Product Length US	1.28 in		

### Technical Information

Termination Style	Punchdown	Cable Type	Cat6
-------------------	-----------	------------	------