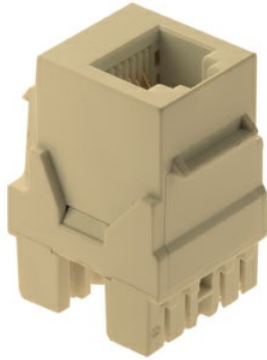




On-Q
6P6C Keystone Connector, Ivory
Part No. WP3425IV



This high-quality RJ25 (6P6C) Keystone Connector is designed for use in any Keystone wall plate. It features rear retention caps to ensure secure wire termination, making it a reliable choice for your network setup.

Features & Benefits

RJ25 (6P6C) Keystone Connector, White

Rear retention caps ensure secure wire termination.

Formerly P&S Part # KS6UW

Specifications

General Info

Product Line	On-Q	Color	Ivory
UPC Number	804428024996	Country Of Origin	Taiwan, Province Of China
Application Sector	Residential	Standard	CSA, cULus, RoHS

Dimensions

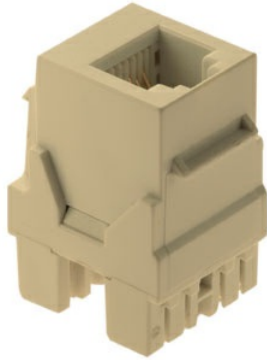
Product Width US	0.67 in	Product Depth US	1.1 in
Product Length US	0.87 in		

Technical Information

Termination Style	Punchdown	Cable Type	Cat5e
Environmental Conditions	10 to 93% (relative humidity, non-condensing)		



On-Q
6P6C Keystone Connector, Ivory
Part No. WP3425IV



This high-quality RJ25 (6P6C) Keystone Connector is designed for use in any Keystone wall plate. It features rear retention caps to ensure secure wire termination, making it a reliable choice for your network setup.

Features & Benefits

RJ25 (6P6C) Keystone Connector, White

Rear retention caps ensure secure wire termination.

Formerly P&S Part # KS6UW

Specifications

General Info

Product Line	On-Q	Color	Ivory
UPC Number	804428024996	Country Of Origin	Taiwan, Province Of China
Application Sector	Residential	Standard	CSA, cULus, RoHS

Dimensions

Product Width US	0.67 in	Product Depth US	1.1 in
Product Length US	0.87 in		

Technical Information

Termination Style	Punchdown	Cable Type	Cat5e
Environmental Conditions	10 to 93% (relative humidity, non-condensing)		