

SURFACE WIRING

METAL RACEWAY

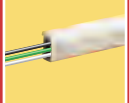
Extra Durable Surface Wiring

Add or extend power, phone, or data lines.

Wiremold Metal Raceway is the raceway of choice for heavy-duty applications including brick walls, concrete, or garages. Available in standard and high capacity to accommodate most uses. Makes running power a snap wherever you need it. Paintable to accent your décor.



BWH1



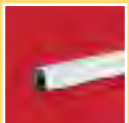
60" L x 3/4" W x 1 1/32" H

1542mm L x 19.1mm W x 13.5mm H

TOOLS YOU'LL NEED:

- Standard and long-nose pliers
- Standard and Phillips head screwdrivers
- Tape measure • Wire snips
- Fine tooth hacksaw • Metal file

METAL RACEWAY parts checklist:



Wire Channel

Carries wire from starter box to downstream outlet boxes, switches, and fixtures.
BWH1(5') 700WH+(10') White
B1(5') V500+(10') Ivory



Starter Box

Fits over existing single-gang outlet box to feed power as the starting point for your system (1" deep).
BW5 White, B5 V5751 Ivory



Outlet Box

For most residential wiring devices (1" deep).
BW2 White, B2 V5748S Ivory



Deep Outlet Box

For standard or oversized switches or outlets – dimmers or GFCIs (1 3/8" deep).
BW3 White, B3 V5747 Ivory



2-Gang Outlet Box

Expanded capacity for extra outlets or outlet/switch combinations (1 3/8" deep).
BW32 White, B32 V5747-2 Ivory



Extra Deep Outlet Box

For oversized wiring devices such as fan speed controls, dimmer switches, and GFCIs (1 3/4" deep).
BW35 White, B35 V5748 Ivory



Circular Fan Box

Bring power to fans and other round based fixtures. Maximum fixture weight 50 lbs.
BW4F White, B4F V5738AF Ivory



Flat Elbow

For making a left or right 90° turn on a flat surface.
BWH6 White, B6 Ivory



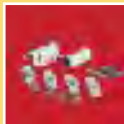
Inside Elbow

For making a 90° turn around an inside corner from wall-to-wall or wall-to-ceiling.
BWH7 White, B7 Ivory



Outside Elbow

For making a 90° turn around an outside corner.
BWH8 White, B8 Ivory



Accessory Pack

Mounting components for wire channel, including metal clips, straps, and fittings.
BWH9-10-11 White
B9-10-11 Ivory



Twist Elbow

For making a 90° turn around an outside corner while changing channel orientation.
BW13-14 White, B13-14 Ivory



T-Fitting

For installations requiring 3-way branching including 90° angle.
BW16 White, B16 Ivory



Fitting

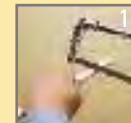
For transitioning from metal raceway to 1/2" conduit or from any steel box with 1/2" knockout.
BW17 White, B17 Ivory



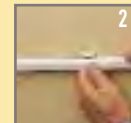
1/2" Box Connector

For connecting raceway to conduit boxes with 1/2" knockout.
B81

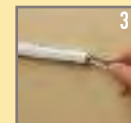
Easy to install:



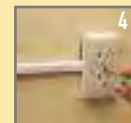
After installing starter box, cut metal raceway to size.



Mount raceway to wall using clips/couplings.



Fish wire through raceway. Connect fittings and devices as required.



Attach covers and install faceplates.