

VuLite®**6" IC REMODEL HOUSING**

INCANDESCENT LAMPS

V6ICR W

Project: _____

Fixture Type: _____

Location: _____

Contact/Phone: _____

PRODUCT DESCRIPTION

IC Air-Loc® Remodel Housing with all 6" trims • Energy efficient, sealed housing • Can be completely covered with insulation • Includes (3) Air-Loc tape strips to cover remodel springs after installation • IC Remodel Housing for remodel application where back side of ceiling is not accessible • Installs through an opening in the ceiling from below • Secured in place by factory installed remodel springs.

PRODUCT SPECIFICATIONS

Lamp Lamp ratings based on trim selected—see reverse.

Socket Medium base porcelain socket with nickel-plated copper screw shell
 • Adjustable socket plate and detachable socket with snap-in springs to accommodate various lamp and trim combinations • Shipped with socket cap to protect against paint overspray.

Trims Trim selection shown on reverse.

Labels UL/cUL listed for through-branch wiring, damp locations and IP
 • Product thermally protected against improper use of lamps • UL/cUL Listed
 • Trims V3040N and V3041 are wet location approved for covered ceiling applications • Trims V3034 and V3037 are wet location approved for covered ceiling applications, **when used with outdoor rated lamps.**

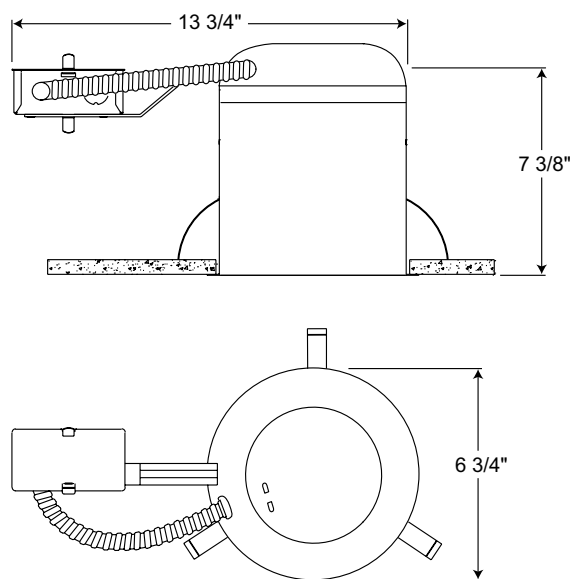
Testing All reports are based on published industry procedures; field performance may differ from laboratory performance.

Specifications subject to change without notice.

INSTALLATION

Junction Box Pre-wired junction box • Junction box provided with removable access plate, (5) ½" knockouts, (4) Non-metallic sheathed cable connectors and ground wire • Knockouts equipped with pryout slots • Push-in electrical connectors included.

Housing IC housing, .028" aluminum sealed for Air-Loc Compliance
 • Remodel spring accommodate up to 1" ceiling thickness.

DIMENSIONS

6 1/4" CEILING CUTOUT

PRODUCT CODES






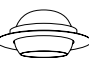



Catalog No.	Input Voltage	Lamp Rating (max.)
V6ICR W	120V	A19/PAR30/PAR30L/BR30/BR40/PAR38 (See reverse for max. trim rating)

6" IC REMODEL HOUSING

INCANDESCENT LAMPS

V6ICR W

TRIMS/LAMPS

	Cat. No.	Description	Max. Lamp Rating
	V3024 WWH V3024 BWH	Conical White Baffle Conical Black Baffle	50W PAR30, 75W PAR30L, 65W BR30
	V3025 WWH V3025 BWH	Straight White Baffle Straight Black Baffle	50W PAR30, 50W PAR30L, 75W PAR38
	V3034 WWH◆◆ V3034 BWH◆◆ V3034T WWH◆◆ V3034T BWH◆◆	Full White Baffle Full Black Baffle Full White Baffle with Torsion Springs Full Black Baffle with Torsion Springs	40W A19 (white only), 75W PAR30, 75W PAR30L, 65W BR30, 90W BR40, 75W PAR38 (black max.), 90W PAR38 (white only)
	V3027 CWH	Clear Cone	50W PAR30, 75W PAR30L, 65W BR30
	V3037 WWH◆◆ V3037T WWH◆◆	Full White Cone Full White Cone with Torsion Springs	40W A19, 75W PAR30, 75W PAR30L 65W BR30, 75W BR40, 90W PAR38
	V3029 WH	White Eyeball	65W BR30, 75W PAR30L
	V3040N PW◆	Stippled Opal Lens Shower with Reflector	30W A19, 35W PAR30
	V3041 PW◆	Drop Opal Lens Shower with Reflector	40W A19
	V3050 WH	Open Frame	65W BR30

Trim Size: 7³/₄" O.D. (except Cat. Nos. V3034, V3037 - 7⁵/₈" O.D., Cat. Nos. V3040N, V3041, V3050 - 8" O.D.).

Trim Finish: PW - Plastic White (Polycarbonate material shower trim), WH - White.

Note: In Canada when insulation is present, Type IC fixtures must be used.

◆ UL/cUL Listed for use in wet location.

◆◆ UL/cUL Listed for use in wet location with outdoor rated lamp.

Air-LOC Vulite IC housings meet IECC Energy Code requirements per ASTM E283.
Air-LOC® rated trims are pre-gasketed for minimum air leakage with IC housings.

VuLite®**6" IC REMODEL HOUSING**

INCANDESCENT LAMPS

V6ICR W

Project: _____

Fixture Type: _____

Location: _____

Contact/Phone: _____

PRODUCT DESCRIPTION

IC Air-Loc® Remodel Housing with all 6" trims • Energy efficient, sealed housing • Can be completely covered with insulation • Includes (3) Air-Loc tape strips to cover remodel springs after installation • IC Remodel Housing for remodel application where back side of ceiling is not accessible • Installs through an opening in the ceiling from below • Secured in place by factory installed remodel springs.

PRODUCT SPECIFICATIONS

Lamp Lamp ratings based on trim selected—see reverse.

Socket Medium base porcelain socket with nickel-plated copper screw shell
 • Adjustable socket plate and detachable socket with snap-in springs to accommodate various lamp and trim combinations • Shipped with socket cap to protect against paint overspray.

Trims Trim selection shown on reverse.

Labels UL/cUL listed for through-branch wiring, damp locations and IP
 • Product thermally protected against improper use of lamps • UL/cUL Listed
 • Trims V3040N and V3041 are wet location approved for covered ceiling applications • Trims V3034 and V3037 are wet location approved for covered ceiling applications, **when used with outdoor rated lamps.**

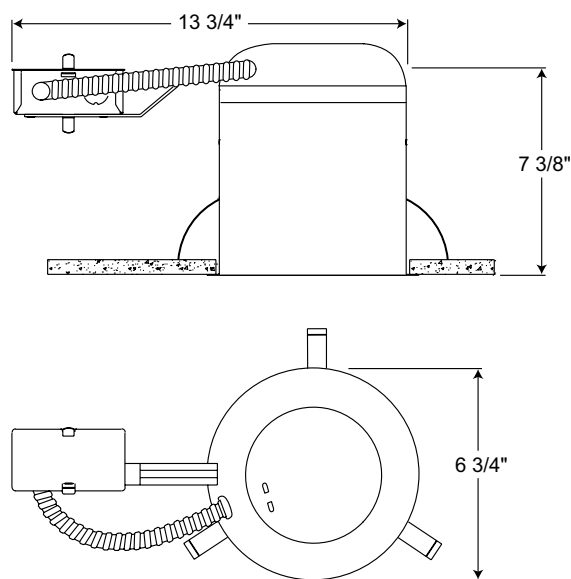
Testing All reports are based on published industry procedures; field performance may differ from laboratory performance.

Specifications subject to change without notice.

INSTALLATION

Junction Box Pre-wired junction box • Junction box provided with removable access plate, (5) ½" knockouts, (4) Non-metallic sheathed cable connectors and ground wire • Knockouts equipped with pryout slots • Push-in electrical connectors included.

Housing IC housing, .028" aluminum sealed for Air-Loc Compliance
 • Remodel spring accommodate up to 1" ceiling thickness.

DIMENSIONS

6 1/4" CEILING CUTOUT

PRODUCT CODES






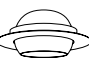



Catalog No.	Input Voltage	Lamp Rating (max.)
V6ICR W	120V	A19/PAR30/PAR30L/BR30/BR40/PAR38 (See reverse for max. trim rating)

6" IC REMODEL HOUSING

INCANDESCENT LAMPS

V6ICR W

TRIMS/LAMPS

	Cat. No.	Description	Max. Lamp Rating
	V3024 WWH	Conical White Baffle	50W PAR30, 75W PAR30L, 65W BR30
	V3024 BWH	Conical Black Baffle	
	V3025 WWH	Straight White Baffle	50W PAR30, 50W PAR30L, 75W PAR38
	V3025 BWH	Straight Black Baffle	
	V3034 WWH◆◆	Full White Baffle	40W A19 (white only), 75W PAR30, 75W PAR30L, 65W BR30, 90W BR40, 75W PAR38 (black max.), 90W PAR38 (white only)
	V3034 BWH◆◆	Full Black Baffle	
	V3034T WWH◆◆	Full White Baffle with Torsion Springs	
	V3034T BWH◆◆	Full Black Baffle with Torsion Springs	
	V3027 CWH	Clear Cone	50W PAR30, 75W PAR30L, 65W BR30
	V3037 WWH◆◆	Full White Cone	40W A19, 75W PAR30, 75W PAR30L, 65W BR30, 75W BR40, 90W PAR38
	V3037T WWH◆◆	Full White Cone with Torsion Springs	
	V3029 WH	White Eyeball	65W BR30, 75W PAR30L
	V3040N PW◆	Stippled Opal Lens Shower with Reflector	30W A19, 35W PAR30
	V3041 PW◆	Drop Opal Lens Shower with Reflector	40W A19
	V3050 WH	Open Frame	65W BR30

Trim Size: 7³/₄" O.D. (except Cat. Nos. V3034, V3037 - 7⁵/₈" O.D., Cat. Nos. V3040N, V3041, V3050 - 8" O.D.).

Trim Finish: PW - Plastic White (Polycarbonate material shower trim), WH - White.

Note: In Canada when insulation is present, Type IC fixtures must be used.

◆ UL/cUL Listed for use in wet location.

◆◆ UL/cUL Listed for use in wet location with outdoor rated lamp.

Air-LOC Vulite IC housings meet IECC Energy Code requirements per ASTM E283.
Air-LOC® rated trims are pre-gasketed for minimum air leakage with IC housings.