



Catalog Number
Notes
Type

Contractor Select™

STACK Switch

LED Center Element Lory-In

Available in 2x2 and 2x4 configurations, STACK Switch allows the end user to select from three lumen packages and three color temperatures all at an affordable price. The wide center basked and curved matte reflector allow STACK Switch to deliver a high quality of light while maintaining optimal performance.

- Contractor Select™ STACK Switch offer the most popular and readily available configurations.
- Color and lumen switching allows for maximum flexibility for contractors, distributors, and end users. High lumen settings allow for more coverage and higher mounting heights. Low lumen settings allow for lower mounting heights and increased power reduction.
- 0-10V dimming to 10%
- Long-life LEDs deliver 80% lumen maintenance at 60,000 hours



Switchable Lumens



Catalog Number	UPC	Description	Lumens	Watts	Voltage	Color Temperature	Pallet qty.
STAKS 2X2 AL03 SWW7	194995082056	2X2 Center Element Troffer	30L/40L/50L	26W - 45W	120V - 277V	35K/40K/50K	60
STAKS 2X4 AL06 SWW7	194995082063	2X4 Center Element Troffer	40L/50L/60L	35W - 55W	120V - 277V	35K/40K/50K	30
STAKS 2X2 AL03 SWW7 UVOLT	196183539205	2X2 Center Element Troffer	30L/40L/50L	21W-41W	120V-347V	35K/40K/50K	60
STAKS 2X4 AL06 SWW7 UVOLT	196183539670	2X4 Center Element Troffer	40L/50L/60L	31W-49W	120V-347V	35K/40K/50K	30

Accessories: Order as separate catalog number.

DGA24	Drywall grid adapter for 2x4 recessed fixture
DGA22	Drywall grid adapter for 2x2 recessed fixture
2X4 SMKSH PAF	2X4 Surface Mount Troffer Kit
2X2 SMKSH PAF	2X2 Surface Mount Troffer Kit
ILB CP10 A	LED emergency battery pack, 10W 50VDC (Noncompliant with CA T20)
ILBLP CP10 HE SD A	LED emergency battery pack, 10W Constant Power, Self-Diagnostic, Certified in CA Title 20 MAEDB
ELA PSRME IC	Remote enclosure for battery for insulated ceiling
RK1BDP J40	Disconnect Plug (BDP) package of 40
RK1BDP J10	Disconnect Plug (BDP) Package of 10



PERFORMANCE DATA

SWITCHABLE TABLE						
Size	Nomenclature	Lumen Package	CCT	Lumens	Wattage	Efficacy
2X2	STAKS 2X2 AL03 SWW7	Low Lumens	35K	3561	26.92	132
			40K	3683	26.18	141
			50K	3583	27.01	133
		Medium Lumens	35K	4371	34.23	128
			40K	4563	33.13	138
			50K	4375	34.22	128
		High Lumens	35K	5035	40.92	123
			40K	5297	39.41	134
			50K	5053	40.99	123
2X4	STAKS 2X4 AL06 SWW7	Low Lumens	35K	4325	31.5	137
			40K	4470	30.61	146
			50K	4369	31.6	138
		Medium Lumens	35K	5310	40.09	132
			40K	5517	38.71	143
			50K	5357	40.26	133
		High Lumens	35K	6170	48.51	127
			40K	6492	46.6	139
			50K	6228	48.39	129



Specifications

INTENDED USE:

The STACK Switch troffer delivers soft, glare-free, ambient lighting in a popular center-basket design. The slim profile of the luminaire, coupled with energy-saving LED technology make the STACK switch an ideal choice for renovation or new construction. The STACK switch troffer offers a high-quality, cost-effective LED lighting solution for schools, offices, retail, healthcare facilities and other commercial spaces.

CONSTRUCTION:

The reflector is finished with a glare reducing matte white paint for improved aesthetics and increased light diffusion. End plates contain easy-to-position integral T-bar clips for securely attaching the luminaire to the T-grid. For additional T-grid security, optional screw on T-bar clips are available. Diffusers are extruded from impact modified acrylic for increased durability. LED boards are accessible from the room-side, and drivers are accessible from the plenum.

OPTICS:

Volumetric illumination is achieved by creating an optimal mix of light to walls, partitions and vertical and horizontal work surfaces – rendering the interior space, objects and occupants in a more balanced, complimentary luminous environment. High performance extruded acrylic diffusers conceal LEDs and efficiently deliver light in a volumetric distribution.

ELECTRICAL:

Long-life LEDs, coupled with high-efficiency drivers, provide superior quantity and quality of illumination for extended service life. 80% LED lumen maintenance at 60,000 hours (L80/60,000). 0-10 volt dimming driver. Dims to 10%.

LUMEN AND COLOR SWITCHING:

Integrated lumen and color switching module is easily accessible, and mounted on the driver box on the back of the fixture. Simply adjust the toggle switch for low, medium, and high setting of both lumens and color.

INSTALLATION:

With a depth of only 1.9", the STACK Switch makes for an easy installation, especially in restrictive plenum applications. The STACK Switch fits into standard 15/16" and narrow 9/16" T-grid ceiling systems. Suitable for damp location.

LISTINGS:

CSA Certified to meet U.S. and Canadian standards. IC rated.

DesignLights Consortium® (DLC) Premium qualified product and DLC qualified product. Not all versions of this product may be DLC Premium qualified or DLC qualified. Please check the DLC Qualified Products List at www.designlights.org/QPL to confirm which versions are qualified.

WARRANTY:

5-year limited warranty. This is the only warranty provided and no other statements in this specification sheet create any warranty of any kind. All other express and implied warranties are disclaimed. Complete warranty terms located at: www.acuitybrands.com/support/warranty/terms-and-conditions

Note: Actual performance may differ as a result of end-user environment and application. All values are design or typical values, measured under laboratory conditions at 25 °C. Specifications subject to change without notice.

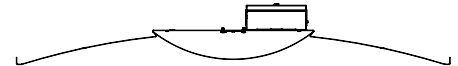
Dimensions

2X4 Length: 47-3/4 (121.3)

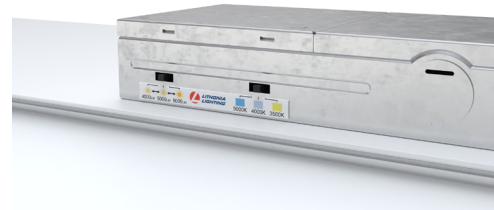
2X2 Length: 23-3/4 (60.3)

Width: 23-3/4 (60.3)

Depth: 1.9 (4.8)



All dimensions are inches (centimeters) unless otherwise indicated.





Catalog Number
Notes
Type

Contractor Select™

STACK Switch

LED Center Element Lory-In

Available in 2x2 and 2x4 configurations, STACK Switch allows the end user to select from three lumen packages and three color temperatures all at an affordable price. The wide center basked and curved matte reflector allow STACK Switch to deliver a high quality of light while maintaining optimal performance.

- Contractor Select™ STACK Switch offer the most popular and readily available configurations.
- Color and lumen switching allows for maximum flexibility for contractors, distributors, and end users. High lumen settings allow for more coverage and higher mounting heights. Low lumen settings allow for lower mounting heights and increased power reduction.
- 0-10V dimming to 10%
- Long-life LEDs deliver 80% lumen maintenance at 60,000 hours



Switchable Lumens



Catalog Number	UPC	Description	Lumens	Watts	Voltage	Color Temperature	Pallet qty.
STAKS 2X2 AL03 SWW7	194995082056	2X2 Center Element Troffer	30L/40L/50L	26W - 45W	120V - 277V	35K/40K/50K	60
STAKS 2X4 AL06 SWW7	194995082063	2X4 Center Element Troffer	40L/50L/60L	35W - 55W	120V - 277V	35K/40K/50K	30
STAKS 2X2 AL03 SWW7 UVOLT	196183539205	2X2 Center Element Troffer	30L/40L/50L	21W-41W	120V-347V	35K/40K/50K	60
STAKS 2X4 AL06 SWW7 UVOLT	196183539670	2X4 Center Element Troffer	40L/50L/60L	31W-49W	120V-347V	35K/40K/50K	30

Accessories: Order as separate catalog number.

DGA24	Drywall grid adapter for 2x4 recessed fixture
DGA22	Drywall grid adapter for 2x2 recessed fixture
2X4 SMKSH PAF	2X4 Surface Mount Troffer Kit
2X2 SMKSH PAF	2X2 Surface Mount Troffer Kit
ILB CP10 A	LED emergency battery pack, 10W 50VDC (Noncompliant with CA T20)
ILBLP CP10 HE SD A	LED emergency battery pack, 10W Constant Power, Self-Diagnostic, Certified in CA Title 20 MAEDB
ELA PSRME IC	Remote enclosure for battery for insulated ceiling
RK1BDP J40	Disconnect Plug (BDP) package of 40
RK1BDP J10	Disconnect Plug (BDP) Package of 10



PERFORMANCE DATA

SWITCHABLE TABLE						
Size	Nomenclature	Lumen Package	CCT	Lumens	Wattage	Efficacy
2X2	STAKS 2X2 AL03 SWW7	Low Lumens	35K	3561	26.92	132
			40K	3683	26.18	141
			50K	3583	27.01	133
		Medium Lumens	35K	4371	34.23	128
			40K	4563	33.13	138
			50K	4375	34.22	128
		High Lumens	35K	5035	40.92	123
			40K	5297	39.41	134
			50K	5053	40.99	123
2X4	STAKS 2X4 AL06 SWW7	Low Lumens	35K	4325	31.5	137
			40K	4470	30.61	146
			50K	4369	31.6	138
		Medium Lumens	35K	5310	40.09	132
			40K	5517	38.71	143
			50K	5357	40.26	133
		High Lumens	35K	6170	48.51	127
			40K	6492	46.6	139
			50K	6228	48.39	129



Specifications

INTENDED USE:

The STACK Switch troffer delivers soft, glare-free, ambient lighting in a popular center-basket design. The slim profile of the luminaire, coupled with energy-saving LED technology make the STACK switch an ideal choice for renovation or new construction. The STACK switch troffer offers a high-quality, cost-effective LED lighting solution for schools, offices, retail, healthcare facilities and other commercial spaces.

CONSTRUCTION:

The reflector is finished with a glare reducing matte white paint for improved aesthetics and increased light diffusion. End plates contain easy-to-position integral T-bar clips for securely attaching the luminaire to the T-grid. For additional T-grid security, optional screw on T-bar clips are available. Diffusers are extruded from impact modified acrylic for increased durability. LED boards are accessible from the room-side, and drivers are accessible from the plenum.

OPTICS:

Volumetric illumination is achieved by creating an optimal mix of light to walls, partitions and vertical and horizontal work surfaces – rendering the interior space, objects and occupants in a more balanced, complimentary luminous environment. High performance extruded acrylic diffusers conceal LEDs and efficiently deliver light in a volumetric distribution.

ELECTRICAL:

Long-life LEDs, coupled with high-efficiency drivers, provide superior quantity and quality of illumination for extended service life. 80% LED lumen maintenance at 60,000 hours (L80/60,000). 0-10 volt dimming driver. Dims to 10%.

LUMEN AND COLOR SWITCHING:

Integrated lumen and color switching module is easily accessible, and mounted on the driver box on the back of the fixture. Simply adjust the toggle switch for low, medium, and high setting of both lumens and color.

INSTALLATION:

With a depth of only 1.9", the STACK Switch makes for an easy installation, especially in restrictive plenum applications. The STACK Switch fits into standard 15/16" and narrow 9/16" T-grid ceiling systems. Suitable for damp location.

LISTINGS:

CSA Certified to meet U.S. and Canadian standards. IC rated.

DesignLights Consortium® (DLC) Premium qualified product and DLC qualified product. Not all versions of this product may be DLC Premium qualified or DLC qualified. Please check the DLC Qualified Products List at www.designlights.org/QPL to confirm which versions are qualified.

WARRANTY:

5-year limited warranty. This is the only warranty provided and no other statements in this specification sheet create any warranty of any kind. All other express and implied warranties are disclaimed. Complete warranty terms located at: www.acuitybrands.com/support/warranty/terms-and-conditions

Note: Actual performance may differ as a result of end-user environment and application. All values are design or typical values, measured under laboratory conditions at 25 °C. Specifications subject to change without notice.

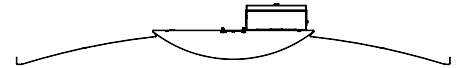
Dimensions

2X4 Length: 47-3/4 (121.3)

2X2 Length: 23-3/4 (60.3)

Width: 23-3/4 (60.3)

Depth: 1.9 (4.8)



All dimensions are inches (centimeters) unless otherwise indicated.

