

Service Post Connectors

For grounding of steel structures, fence posts or transformers using one or two cables.

Service Post Connectors

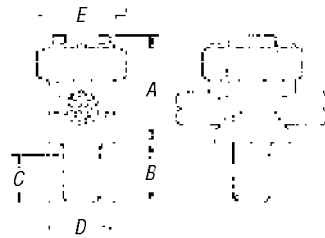
- For copper-to-copper connections
- For tapping one or two cables from bus bar
- Hex design bolts machined from high-conductivity bronze alloy
- Nuts and pressure bars cold-formed from high-strength copper or copper alloy
- Available in sizes for #12 – 500 kcmil stranded and #12 – #2 solid copper conductor
- Available in both single- and double-conductor versions
- UL® 486A and UL® 467 Listed



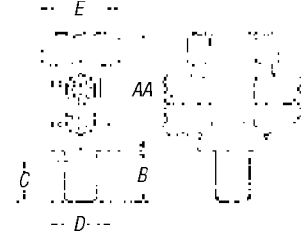
Short Stud



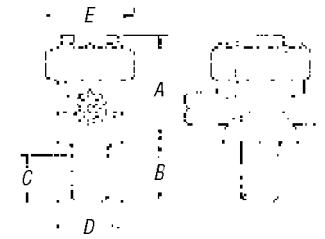
Long Stud



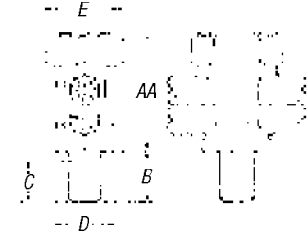
Single-Conductor Short Stud



Double-Conductor Short Stud



Single-Conductor Long Stud



Double-Conductor Long Stud

Single- and Double-Conductor Service Post Connectors, Short Stud



CAT. NO.	CONDUCTOR RANGE				DIAMETER RANGE (IN.)	STUD SIZE	
	STRANDED		SOLID				
SP-DS	SP-SS	MAX. AWG	MIN. MM ²	MAX. AWG	MIN. MM ²		
SP0DS	SP0SS	8	12	8	12	.146-.081	¼-20 x ½
		6mm ²	4mm ²	10mm ²	4mm ²	—	
SP1DS	SP1SS	7	10	6	10	.164-.102	¼-20 x ½
		10mm ²	6mm ²	10mm ²	6mm ²	—	
SP2DS	SP2SS	5	10	4	10	.206-.102	⅝-18 x ⅜
		16mm ²	6mm ²	—	—	—	
SP3DS	SP3SS	3	10	2	10	.26-.102	⅝-16 x ⅜
		25mm ²	6mm ²	—	—	—	
SP4DS	SP4SS	1	8	2	8	.332-.129	⅝-16 x ⅜
		35mm ²	10mm ²	—	—	—	
SP5DS	SP5SS	1/0	2	1/0	2	.373-.258	½-13 x ¾
		50mm ²	35mm ²	—	—	—	
SP6DS	SP6SS	2/0	2	2/0	2	.419-.258	½-13 x ¾
		50mm ²	35mm ²	—	—	—	
SP8DS	SP8SS	4/0	2	4/0	1	.528-.289	⅝-11 x 1
		95mm ²	35mm ²	—	—	—	
SP9DS	SP9SS	350	1/0	—	—	.681-.373	⅝-11 x 1
		150mm ²	50mm ²	—	—	—	
SP10DS	SP10SS	500	3/0	—	—	.814-.47	¾-10 x 1¼
		240mm ²	95mm ²	—	—	—	

Single- and Double-Conductor Service Post Connectors, Long Stud



CAT. NO.	CONDUCTOR RANGE				DIAMETER RANGE (IN.)	STUD SIZE	
	STRANDED		SOLID				
SP-SL	SP-DL	MAX. AWG	MIN. MM ²	MAX. AWG	MIN. MM ²		
SP0SL	SP0DL	8	12	8	12	.146-.081	¼-20 x 1
		6mm ²	4mm ²	10mm ²	4mm ²	—	
SP1SL	SP1DL	7	10	6	10	.164-.102	¼-20 x 1
		10mm ²	6mm ²	10mm ²	6mm ²	—	
SP2SL	SP2DL	5	10	4	10	.206-.102	⅝-18 x 1
		16mm ²	6mm ²	—	—	—	
SP3SL	SP3DL	3	10	2	10	.26-.102	⅝-16 x 1¼
		25mm ²	6mm ²	—	—	—	
SP4SL	SP4DL	1	8	2	8	.332-.129	⅝-16 x 1¼
		35mm ²	10mm ²	—	—	—	
SP5SL	SP5DL	1/0	2	1/0	2	.373-.258	½-13 x 1¼
		50mm ²	35mm ²	—	—	—	
SP6SL	SP6DL	2/0	2	2/0	2	.419-.258	½-13 x 1¼
		50mm ²	35mm ²	—	—	—	
SP8SL	SP8DL	4/0	2	4/0	1	.528-.289	⅝-11 x 1¼
		95mm ²	35mm ²	—	—	—	
SP9SL	SP9DL	350	1/0	—	—	.681-.373	⅝-11 x 1¼
		150mm ²	50mm ²	—	—	—	
SP10SL	SP10DL	500	3/0	—	—	.814-.47	¾-10 x 1¼
		240mm ²	95mm ²	—	—	—	

Service Post Connectors

For grounding of steel structures, fence posts or transformers using one or two cables.

Service Post Connectors

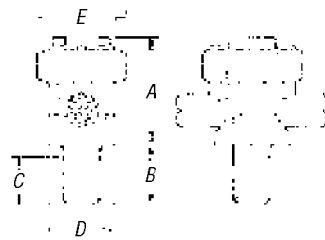
- For copper-to-copper connections
- For tapping one or two cables from bus bar
- Hex design bolts machined from high-conductivity bronze alloy
- Nuts and pressure bars cold-formed from high-strength copper or copper alloy
- Available in sizes for #12 – 500 kcmil stranded and #12 – #2 solid copper conductor
- Available in both single- and double-conductor versions
- UL® 486A and UL® 467 Listed



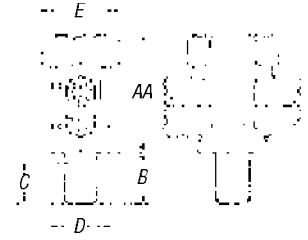
Short Stud



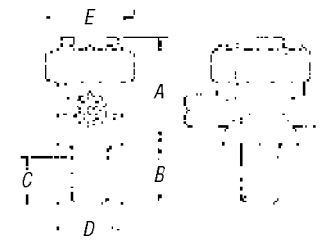
Long Stud



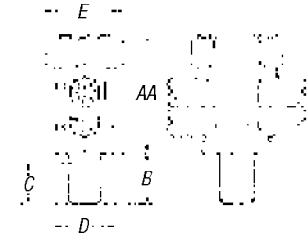
Single-Conductor Short Stud



Double-Conductor Short Stud



Single-Conductor Long Stud



Double-Conductor Long Stud

Single- and Double-Conductor Service Post Connectors, Short Stud



CAT. NO.	CONDUCTOR RANGE				DIAMETER RANGE (IN.)	STUD SIZE
	STRANDED		SOLID			
SP-DS	SP-SS	MAX. AWG	MIN. MM ²	MAX. AWG	MIN. MM ²	
SP0DS	SP0SS	8	12	8	12	.146-.081 ¼-20 x ½
		6mm ²	4mm ²	10mm ²	4mm ²	—
SP1DS	SP1SS	7	10	6	10	.164-.102 ¼-20 x ½
		10mm ²	6mm ²	10mm ²	6mm ²	—
SP2DS	SP2SS	5	10	4	10	.206-.102 ⅝-18 x ⅜
		16mm ²	6mm ²	—	—	—
SP3DS	SP3SS	3	10	2	10	.26-.102 ⅝-16 x ⅜
		25mm ²	6mm ²	—	—	—
SP4DS	SP4SS	1	8	2	8	.332-.129 ⅝-16 x ⅜
		35mm ²	10mm ²	—	—	—
SP5DS	SP5SS	1/0	2	1/0	2	.373-.258 ½-13 x ¾
		50mm ²	35mm ²	—	—	—
SP6DS	SP6SS	2/0	2	2/0	2	.419-.258 ½-13 x ¾
		50mm ²	35mm ²	—	—	—
SP8DS	SP8SS	4/0	2	4/0	1	.528-.289 ⅝-11 x 1
		95mm ²	35mm ²	—	—	—
SP9DS	SP9SS	350	1/0	—	—	.681-.373 ⅝-11 x 1
		150mm ²	50mm ²	—	—	—
SP10DS	SP10SS	500	3/0	—	—	.814-.47 ¾-10 x 1¼
		240mm ²	95mm ²	—	—	—

Single- and Double-Conductor Service Post Connectors, Long Stud



CAT. NO.	CONDUCTOR RANGE				DIAMETER RANGE (IN.)	STUD SIZE
	STRANDED		SOLID			
SP-SL	SP-DL	MAX. AWG	MIN. MM ²	MAX. AWG	MIN. MM ²	
SP0SL	SP0DL	8	12	8	12	.146-.081 ¼-20 x 1
		6mm ²	4mm ²	10mm ²	4mm ²	—
SP1SL	SP1DL	7	10	6	10	.164-.102 ¼-20 x 1
		10mm ²	6mm ²	10mm ²	6mm ²	—
SP2SL	SP2DL	5	10	4	10	.206-.102 ⅝-18 x 1
		16mm ²	6mm ²	—	—	—
SP3SL	SP3DL	3	10	2	10	.26-.102 ⅝-16 x 1¼
		25mm ²	6mm ²	—	—	—
SP4SL	SP4DL	1	8	2	8	.332-.129 ⅝-16 x 1¼
		35mm ²	10mm ²	—	—	—
SP5SL	SP5DL	1/0	2	1/0	2	.373-.258 ½-13 x 1¼
		50mm ²	35mm ²	—	—	—
SP6SL	SP6DL	2/0	2	2/0	2	.419-.258 ½-13 x 1¼
		50mm ²	35mm ²	—	—	—
SP8SL	SP8DL	4/0	2	4/0	1	.528-.289 ⅝-11 x 1¼
		95mm ²	35mm ²	—	—	—
SP9SL	SP9DL	350	1/0	—	—	.681-.373 ⅝-11 x 1¼
		150mm ²	50mm ²	—	—	—
SP10SL	SP10DL	500	3/0	—	—	.814-.47 ¾-10 x 1¼
		240mm ²	95mm ²	—	—	—