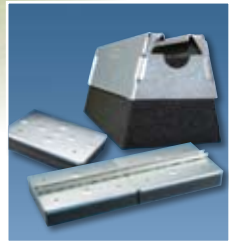


CADDY®

CADDY® PYRAMID Pipe & Equipment Supports



ERICO®

CADDY® PYRAMID Pipe & Equipment Supports

CADDY® PYRAMID Rooftop Supports Stand the Test of Time – Wood Blocks Don't!



- ▲ CADDY PYRAMID Rooftop Supports are weatherproof and long lasting.
- ▲ CADDY PYRAMID Rooftop Supports are roof-friendly.



- ▲ Wood blocks can easily rot when exposed to rooftop weather conditions, such as sunlight exposure or rain.
- ▲ Loose or broken clamps can be problematic or even dangerous.



CADDY® PYRAMID Pipe & Equipment Supports

Introduction

ERICO is committed to offering high-quality, innovative products and services for the roofing and mechanical markets. To provide installers with a more extensive range of products for roofing applications, ERICO has expanded its already popular CADDY® PYRAMID line of rooftop pipe supports.

- ▲ **CADDY® PYRAMID ST Series:** A strut-based support utilizing an engineered thermoplastic base with a UV stabilizer. The CADDY PYRAMID ST Series offers excellent load distribution with high load ratings.
- ▲ **CADDY® PYRAMID RL Series:** Polymeric-roller based support helps ensure long-lasting performance and smooth roller actions. The CADDY PYRAMID RL Series provides superior durability for rooftop environments.
- ▲ **CADDY® PYRAMID EZ Series:** EPDM rubber-based and height-adjustable. Requires no tools or fittings, making installations easier than ever.
- ▲ **CADDY® PYRAMID:** The original design provides lightweight support with roof-friendly materials.

All CADDY PYRAMID products are designed with a wide variety of high-quality, user-friendly features:

- ▲ **Versatile:** CADDY PYRAMID products offer superior load capacity and dramatically reduce installation time by replacing slow, heavy and labor-intensive methods to support pipe, conduit, duct, cable tray and equipment.
- ▲ **Durable:** CADDY PYRAMID has passed a variety of rigorous tests, including an extreme temperature test. Unique materials and finishes offer superior corrosion protection.
- ▲ **Roof Friendly:** CADDY PYRAMID products are specifically designed for rooftop applications. Unlike wood blocks, CADDY PYRAMID is designed to protect roof membranes. The CADDY PYRAMID EZ Series is made from EPDM, the same material as many roof membranes. The base design of the CADDY PYRAMID ST Series and CADDY PYRAMID RL Series helps distribute loads evenly to avoid stress concentration on membranes. The original CADDY PYRAMID polyethylene closed-cell foam is one of the most roof-friendly materials on the market today.



CADDY® PYRAMID



CADDY® PYRAMID EZ Series



CADDY® PYRAMID ST and RL Series

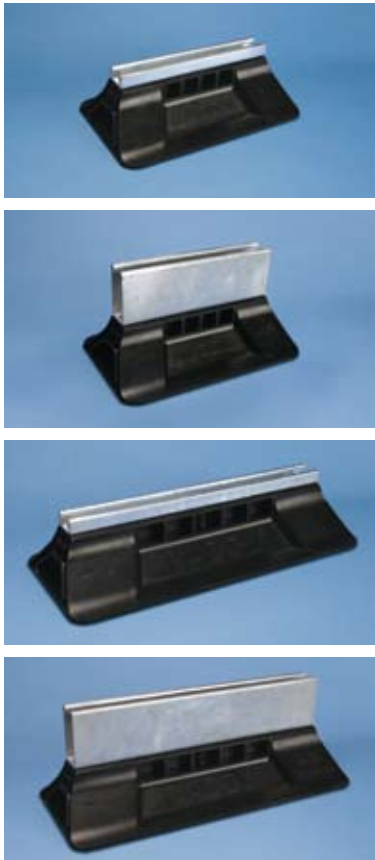
CADDY® PYRAMID ST Series

Strut-based Thermoplastic Supports

- ▲ **Versatile:** Ideal for a variety of rooftop applications; provides superior support for pipe, conduit, duct, cable tray and equipment.
- ▲ **High load capacity:** Structurally engineered to support up to 1,500 lbs.
- ▲ **Roof friendly:** Unique design and continuous bottom surface provide uniform load distribution and help protect the roof membrane from damage caused by concentrated pressure.
- ▲ **Height adjustable:** Designed to accommodate elevation changes on the roof. Installation at a greater distance from the roof may be required by some codes.
- ▲ **Long-lasting performance:** Engineered thermoplastic material is UV-stabilized and weatherproof. All strut and hardware feature a hot-dipped galvanized finish for superior corrosion resistance.
- ▲ **Supports green building requirements:** All thermoplastic bases are made from recycled material and can contribute toward earning LEED credit.



CADDY® PYRAMID ST Series

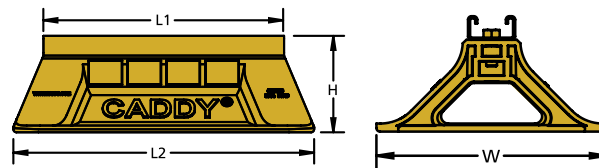


Fixed Strut Supports:

- ▲ Provide fixed-height mounting platform 4" or 6" off the roof surface and 10" or 16" of usable strut length
- ▲ Maximum recommended load is up to 1,500 lbs
- ▲ Hot-dipped galvanized finish provides superior corrosion protection

Part Number	H (in)	L1 (in)	L2 (in)	W (in)	Surface Area (in ²)	Weight lbs / ea.	Max. Rec. Load (lbs)*
RPS360400	4	10	12.5	8	94.3	2.95	1,000
RPS360401	6	10	12.5	8	94.3	4.65	1,000
RPS360403	4	16	18.5	8	140.8	4.40	1,500
RPS360404	6	16	18.5	8	140.8	7.05	1,500

* Max. recommended load at 10.6 psi roof loading. Contact project or roofing engineer for maximum allowable load on individual project roof system.

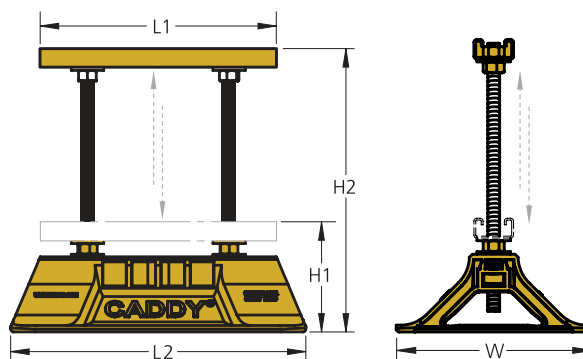


Adjustable-Height Strut Supports:

- ▲ Allow elevation change up to 16" off the roof surface with up to 10" or 16" of usable strut length
- ▲ Maximum recommended load is up to 1,500 lbs
- ▲ Hot-dipped galvanized finish provides superior corrosion protection

Part Number	H1 (in)	Max. H2 (in)	L1 (in)	L2 (in)	W (in)	Surface Area (in ²)	Weight lbs / ea.	Max. Rec. Load (lbs)*
RPS360402	4.6	12	10	12.5	8	94.3	4.30	1,000
RPS360405	5.5	17	16	18.5	8	140.8	6.00	1,500

* Max. recommended load at 10.6 psi roof loading. Contact project or roofing engineer for maximum allowable load on individual project roof system.



CADDY® PYRAMID RL Series

Roller-based Thermoplastic Supports

- ▲ **High load capacity:** Structurally engineered to support up to 6" diameter (Nom.) Sch. 40 water-filled steel pipe at maximum spacing of 10'.
- ▲ **Roof friendly:** Unique design and continuous bottom surface provide uniform load distribution and help protect the roof membrane from damage caused by concentrated pressure.
- ▲ **Height adjustable:** Designed to accommodate elevation changes on the roof. Keeps conduit away from higher ambient temperature, as required by code in many areas.
- ▲ **Roller capability:** Allows longitudinal movement of pipe, such as from thermal expansion or contraction.
- ▲ **Long-lasting performance:** Engineered thermoplastic material in both bases and rollers is UV-stabilized and weatherproof. All strut and hardware feature a hot-dipped galvanized finish for superior corrosion resistance.
- ▲ **Supports green building requirements:** All thermoplastic bases are made from recycled material and can contribute toward earning LEED credit.



CADDY® PYRAMID RL Series

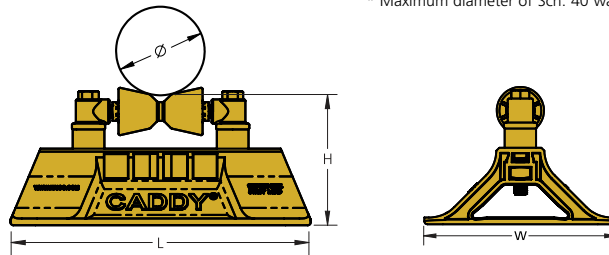


Fixed Roller Supports:

- ▲ Provides roller capability for up to 6" nominal pipe with 5.5" fixed height
- ▲ Polymeric rollers will not rust, helping to ensure long-lasting performance and smooth roller action
- ▲ Hot-dipped galvanized finish on steel roller axle, fittings and other hardware provides superior corrosion protection
- ▲ Supports up to 6" diameter (Nom.) Sch. 40 water-filled steel pipe at maximum spacing of 10'

Part Number	Nominal Pipe Diameter (in)	H (in)	L (in)	W (in)	Surface Area (in ²)	Weight lbs / ea.	Max. Nom. Pipe Size (in)* Ø
RPS360406	3/4 - 3	5.5	12.5	8	94.3	3.85	3
RPS360408	2 - 6	5.5	18.5	8	140.8	5.20	6

* Maximum diameter of Sch. 40 water-filled steel pipe at maximum 10' support spacing.

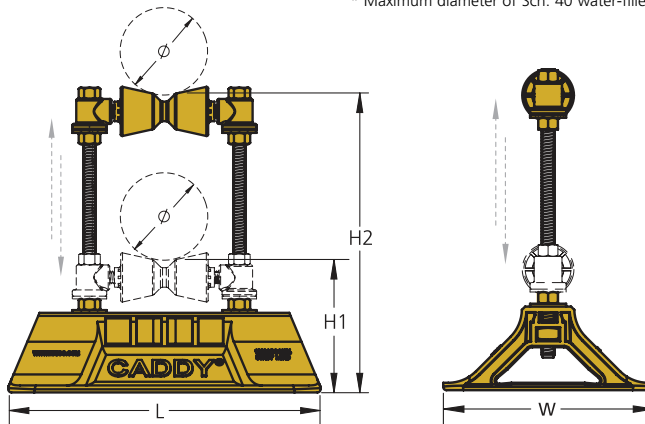


Adjustable-Height Roller Supports:

- ▲ Can accommodate elevation changes of up to 16" off the roof with up to 6" diameter (Nom.) pipe
- ▲ Polymeric rollers will not rust, helping to ensure long-lasting performance and smooth roller action
- ▲ Hot-dipped galvanized finish on steel roller axle, fittings and other hardware provides superior corrosion protection
- ▲ Supports up to 6" diameter (Nom.) Sch. 40 water-filled steel pipe at maximum spacing of 10'

Part Number	Nominal Pipe Diameter (in)	H1 (in)	Max. H2 (in)	L (in)	W (in)	Surface Area (in ²)	Weight lbs / ea.	Max. Nom. Pipe Size (in)* Ø
RPS360407	3/4 - 3	5.5	12	12.5	8	94.3	4.20	3
RPS360409	2 - 6	5.5	16	18.5	8	140.8	5.95	6

* Maximum diameter of Sch. 40 water-filled steel pipe at maximum 10' support spacing.



CADDY® PYRAMID EZ Series

Adjustable-Height Tool-Free Rooftop Pipe Supports

- ▲ **Quick and easy:** No tools or fasteners needed; fast snap-on installation
- ▲ **Roof friendly:** Made of UV-stabilized EPDM material
- ▲ **Height adjustable:** Multiple models allow for height adjustment from 1-3/4" to 4", 4" to 6", or 5" to 7"
- ▲ **Convenient:** Models can accommodate all pipe and conduit types up to 2" Sch. 40



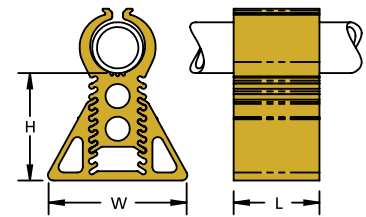
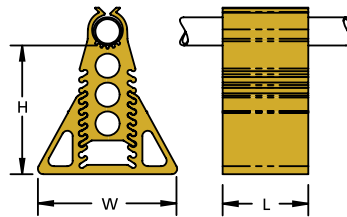
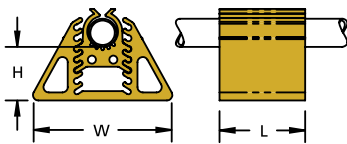
RPSE1H24



RPSE1H57



RPSE2H46



Part Number	Max. Nom. Pipe or Conduit Size (in)*	Max. Pipe or Conduit OD (in)	H (in)	L (in)	W (in)	Weight (lbs)	Ultimate Load (lbs)**
RPSE1H24	1	1.315	1-3/4 – 4	4	6	2	170
RPSE1H57	1	1.315	5 – 7	4	6	3.04	170
RPSE2H46	2	2.37	4 – 6	4	6	3.3	250

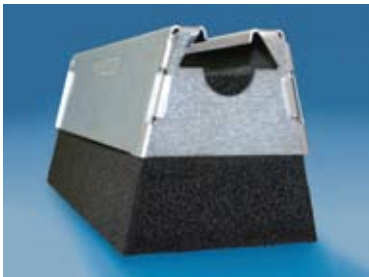
* Maximum diameter of Sch. 40 water-filled steel pipe at maximum 10' support spacing.

** Ultimate load at 1/4" deflection. Contact project or roofing engineer for maximum allowable load on individual project roof system.



CADDY® PYRAMID Pipe & Equipment Supports

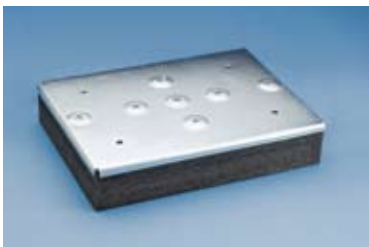
- ▲ Dramatically reduces installation time by replacing slow and labor-intensive methods for supporting pipes, conduits, cable tray and equipment on roofs and below raised floors.
- ▲ Supports a wide range of concentrated loads from 50 to 600 lbs.
- ▲ Easily increases load capacity by combining similar CADDY® PYRAMID supports (two CADDY PYRAMID 50 units = 100 lbs).
- ▲ Designed to help protect the roof membrane while absorbing shock and vibration, but will not absorb water.
- ▲ Metal cover protects against weather and other environmental conditions, such as damage caused by birds.
- ▲ Features a standard electro-galvanized finish for corrosion protection.
- ▲ Passed ASTM® A370-30A for mechanical pull testing between -40° C (-40° F) and +65° C (+150° F).
- ▲ Passed ASTM G154 on foam construction for accelerated UV exposure test.



CADDY® PYRAMID 50:

- ▲ Supports up to 50 lb loads with each support
- ▲ Polyethylene closed-cell foam and 16-gauge steel construction
- ▲ The 4" model has a 10-3/8" x 4" footprint
- ▲ The 6" model has a 10-3/8" x 4-3/4" footprint
- ▲ Electro-galvanized (EG) finish or polyester on the plenum version provide superior corrosion protection

Part Number	Max. Working Load (lbs)	H (in)	Finish
RPS50H4EG	50	4	EG
RPS50H6EG	50	6	EG
RPS50AHSV	50	2-1/4	Polyester



CADDY® PYRAMID 150:

- ▲ Supports up to 150 lb loads each
- ▲ Has six 3/8 - 16 threaded inserts with captive nuts that allow the product to be used with standard pipe clamps and accessories
- ▲ Large 16" x 12" footprint distributes load more evenly than alternative methods
- ▲ Polyethylene closed-cell foam and 14-gauge steel construction
- ▲ Electro-galvanized (EG) finish on top plate for added corrosion protection

Part Number	Max. Working Load (lbs)	H (in)	Threads	Strut Included?	Finish
RPS150T1	150	3-3/16	3/8 - 16	No	EG
RPS150T2	150	4	3/8 - 16	Yes	EG

CADDY® PYRAMID Pipe & Equipment Supports



CADDY® PYRAMID 300:

- ▲ Same design, steel plate and finish choices as CADDY® PYRAMID 150
- ▲ Cross-linked polyethylene closed-cell foam supports up to 300 lbs; 14-gauge steel top plate

Part Number	Max. Working Load (lbs)	H (in)	Threads	Strut Included?	Finish
RPS300T1	300	3-3/16	3/8 - 16	No	EG
RPS300T2	300	4	3/8 - 16	Yes	EG

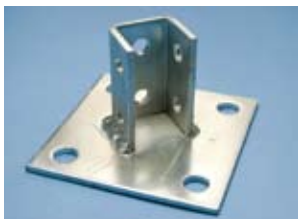


CADDY® PYRAMID 600:

- ▲ Consists of two CADDY PYRAMID 300 bases attached with a length of strut to support 600 lb loads each
- ▲ Footprint is 32" x 12" (24" x 16" optional with cutting of strut) for more even load distribution
- ▲ Has twelve 3/8 - 16 threaded inserts

Part Number	Max. Working Load (lbs)	H (in)	Threads	Strut Included?	Finish
RPS600T2	600	4	3/8 - 16	Yes	EG

CADDY PYRAMID Accessories



P110000EG



CADDY® PYRAMID Column Supports:

- ▲ Attaches directly to strut
- ▲ For added flexibility, strut can be cut to length on-site as required for the application



RPSCSEG



Part Number	Description	Finish	Packing Unit
RPSCSEG	Strut-to-strut post base for RPS 50/150/300	EG	1
P110000EG	Strut post base for RPS 150/300	EG	1





Inset photo shows rubber mat in use with fixed roller support (not included)

Rubber Mat for CADDY® PYRAMID ST and RL Series:

- ▲ Used with CADDY PYRAMID ST or RL Series to add extra protection to roof membrane
- ▲ Made of recycled material and is UV-stabilized
- ▲ Dampens vibration and reduces sound

Part Number	L (in)	W (in)	H (in)
RPS360410	13.5	9	1
RPS360411	19.5	9	1



RIGD Clamp



RIGD Heavy-Duty Strut Clamps:

- ▲ Supports rigid pipe to strut
- ▲ Size range: 3/8" through 8"
- ▲ One-piece design (1/2" through 4" pipe size) incorporates a retained bolt and built-in nut
- ▲ Installs with either a screwdriver or a nut driver
- ▲ Surface finish: electro-zinc plated

Part Number	Nominal Pipe Size	O.D.	Max. Rec. Load (lbs)
RIGD0037EG	3/8"	.675"	400
RIGD0050EG	1/2"	.840"	400
RIGD0075EG	3/4"	1.050"	600
RIGD0100EG	1"	1.315"	600
RIGD0125EG	1-1/4"	1.660"	600
RIGD0150EG	1-1/2"	1.900"	800
RIGD0200EG	2"	2.375"	800
RIGD0250EG	2-1/2"	2.875"	800
RIGD0300EG	3"	3.500"	800
RIGD0350EG	3-1/2"	4.000"	1000
RIGD0400EG	4"	4.500"	1000
RIGD0500EG	5"	5.563"	1000
RIGD0600EG	6"	6.625"	1000
RIGD0800EG	8"	8.625"	1000



SK Clamp



Strut Pipe Clamps SK One-Piece Universal Strut Clips:

- ▲ One-piece break apart design includes captive combo head machine screw and built-in nut (thread impression)
- ▲ Retained bolt and built-in nut prevents dropping of loose parts
- ▲ Fits any standard 1-5/8" wide strut channel
- ▲ Size range: 1/2" through 4"
- ▲ One size fits both EMT conduit and rigid pipe sizes
- ▲ Surface finish: electro-zinc plated

Part Number	EMT RIGID	Max. Rec. Load (lbs)
SK85I	1/2"	200
SK125I	3/4"	200
SK165I	1"	200
SK205I	1-1/4"	200
SK245I	1-1/2"	200
SK325I	2"	200
SK405I	2-1/2"	350
SK485I	3"	350
SK565I	3-1/2"	350
SK645I	4"	350

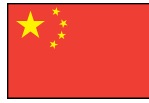
ERICO®



www.erico.com



AUSTRALIA
Phone 1-800-263-508
Fax 1-800-423-091



CHINA
Phone +86-21-3430-4878
Fax +86-21-5831-8177



HUNGARY
Phone 06-800-16538
Fax +39-0244-386-107



NORWAY
Phone 800-100-73
Fax 800-100-66



SWITZERLAND
Phone 0800-55-86-97
Fax 0800-55-96-15



BELGIUM
Phone 0800-757-48
Fax 0800-757-60



DENMARK
Phone 808-89-372
Fax 808-89-373



INDONESIA
Phone +62-21-575-0941
Fax +62-21-575-0942



POLAND
Phone +48-71-349-04-60
Fax +48-71-349-04-61



THAILAND
Phone +66-2-267-5776
Fax +66-2-636-6988



BRAZIL
Phone +55-11-3623-4333
Fax +55-11-3621-4066



FRANCE
Phone 0-800-901-793
Fax 0-800-902-024



ITALY
Phone 800-870-938
Fax 800-873-935



SINGAPORE
Phone +65-6-268-3433
Fax +65-6-268-1389



**UNITED ARAB
EMIRATES**
Phone +971-4-881-7250
Fax +971-4-881-7270



CANADA
Phone 1-800-677-9089
Fax 1-800-677-8131



GERMANY
Phone 0-800-189-0272
Fax 0-800-189-0274



MEXICO
Phone +52-55-5260-5991
Fax +52-55-5260-3310



SPAIN
Phone 900-993-154
Fax 900-807-333



UNITED KINGDOM
Phone 0808-2344-670
Fax 0808-2344-676



CHILE
Phone +56-2-370-2908
Fax +56-2-369-5657



HONG KONG
Phone +852-2764-8808
Fax +852-2764-4486



NETHERLANDS
Phone 0800-0200-135
Fax 0800-0200-136



SWEDEN
Phone 020-790-908
Fax 020-798-964



UNITED STATES
Phone 1-800-753-9221
Fax +1-440-248-0723

ASTM is a registered trademark of ASTM International.

WARNING

ERICO products shall be installed and used only as indicated in ERICO's product instruction sheets and training materials. Instruction sheets are available at www.erico.com and from your ERICO customer service representative. Improper installation, misuse, misapplication or other failure to completely follow ERICO's instructions and warnings may cause product malfunction, property damage, serious bodily injury and death.

WARRANTY

ERICO products are warranted to be free from defects in material and workmanship at the time of shipment. NO OTHER WARRANTY, WHETHER EXPRESS OR IMPLIED (INCLUDING ANY WARRANTY OF MERCHANTABILITY OR FITNESS FOR A PARTICULAR PURPOSE), SHALL EXIST IN CONNECTION WITH THE SALE OR USE OF ANY ERICO PRODUCTS. Claims for errors, shortages, defects or nonconformities ascertainable upon inspection must be made in writing within 5 days after Buyer's receipt of products. All other claims must be made in writing to ERICO within 6 months from the date of shipment or transport. Products claimed to be nonconforming or defective must, upon ERICO's prior written approval in accordance with its standard terms and procedures governing returns, promptly be returned to ERICO for inspection. Claims not made as provided above and within the applicable time period will be barred. ERICO shall in no event be responsible if the products have not been stored or used in accordance with its specifications and recommended procedures. ERICO will, at its option, either repair or replace nonconforming or defective products for which it is responsible or return the purchase price to the Buyer. THE FOREGOING STATES BUYER'S EXCLUSIVE REMEDY FOR ANY BREACH OF ERICO WARRANTY AND FOR ANY CLAIM, WHETHER SOUNDING IN CONTRACT, TORT OR NEGLIGENCE, FOR LOSS OR INJURY CAUSED BY THE SALE OR USE OF ANY PRODUCT.

LIMITATION OF LIABILITY

ERICO excludes all liability except such liability that is directly attributable to the willful or gross negligence of ERICO's employees. Should ERICO be held liable its liability shall in no event exceed the total purchase price under the contract. ERICO SHALL IN NO EVENT BE RESPONSIBLE FOR ANY LOSS OF BUSINESS OR PROFITS, DOWNTIME OR DELAY, LABOR, REPAIR OR MATERIAL COSTS OR ANY SIMILAR OR DISSIMILAR CONSEQUENTIAL LOSS OR DAMAGE INCURRED BY BUYER.

Copyright ©2010, 2008, 2007, 2006 ERICO International Corporation. All rights reserved.
CADDY, CADWELD, CRITEC, ERICO, ERIFLEX, ERITECH, and LENTON are registered trademarks of ERICO International Corporation.

FM973B-NAEN

FM251LT10NAEN

50M0510