

# Spec 5™ Malleable Iron Conduit Bodies

For Rigid Conduit & IMC

## Types LB, T, LB-G & T-G

**Use:**

To provide access to conductors for pulling, splicing, maintenance and future changes/upgrades. Allows connection of straight conduit runs, branch conduit runs and 90° bends.


**Features:**


- Tapered threaded hubs (NPT).
- Raintight when used with gasketed covers.
- Malleable iron suitable for use in concrete.
- For covers and gaskets, see Pages AB4 and AB5.
- Complete interchangeability with other manufacturers' style "5" or "35" Conduit Bodies.
- Internal volume and maximum wire clearly marked on castings.

**Material/Finish:**

Malleable Iron/  
Zinc Electroplated Aluminum Enamel  
Catalog number with suffix "G"  
Malleable Iron with Hot Dip Galvanize

**Third Party Certification:**

 UL Listed E-18095  
Suitable for wet locations when used with gasketed covers.

 CSA Certified: 009795  
Suitable for wet locations when used with gasketed covers.

**Applicable Third Party Standards:**

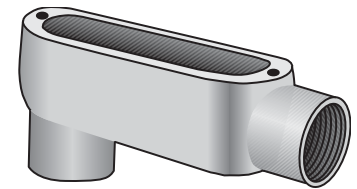
UL Standard: 514A  
CSA Standard: C22.2 No. 18  
Fed Spec: A-A-50563  
NEMA: FB-1, FB-2.10

**Dimensional Data:**

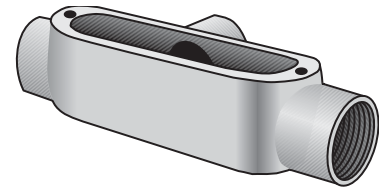
See Pages AB6 - AB8

**Note:** Conduit bodies are suitable for use in Class I, Div. 2 hazardous locations per NEC Section 501-4(B).

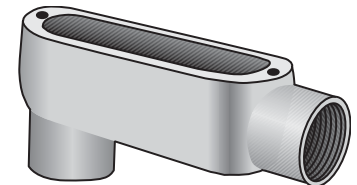
| Trade Size (inches) | Catalog Number<br>Malleable Iron<br>Zinc Plated |
|---------------------|---|
| 1/2                 | LB-50   |
| 3/4                 | LB-75   |
| 1                   | LB-100  |
| 1 1/4               | LB-125  |
| 1 1/2               | LB-150  |
| 2                   | LB-200  |
| 2 1/2               | LB-250  |
| 3                   | LB-300  |
| 3 1/2               | LB-350  |
| 4                   | LB-400  |
| 1/2                 | T-50  |
| 3/4                 | T-75  |
| 1                   | T-100   |
| 1 1/4               | T-125   |
| 1 1/2               | T-150   |
| 2                   | T-200   |
| 2 1/2               | T-250   |
| 3                   | T-300   |
| 3 1/2               | T-350   |
| 4                   | T-400   |



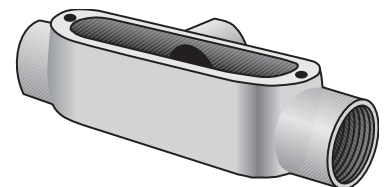
Type LB



Type T



Type LB-G  
Hot Dip Galvanized



Type T-G  
Hot Dip Galvanized

| Trade Size (inches) | Catalog Number<br>Malleable Iron<br>Hot Dip Galvanized |
|---------------------|--|
| 1/2                 | LB-50G   |
| 3/4                 | LB-75G   |
| 1                   | LB-100G  |
| 1 1/4               | LB-125G  |
| 1 1/2               | LB-150G  |
| 2                   | LB-200G  |
| 2 1/2               | LB-250G  |
| 3                   | LB-300G  |
| 3 1/2               | LB-350G  |
| 4                   | LB-400G  |
| 1/2                 | T-50G  |
| 3/4                 | T-75G  |
| 1                   | T-100G   |
| 1 1/4               | T-125G   |
| 1 1/2               | T-150G   |
| 2                   | T-200G   |
| 2 1/2               | T-250G   |
| 3                   | T-300G   |
| 3 1/2               | T-350G   |
| 4                   | T-400G   |

# Spec 5™ Malleable Iron Conduit Bodies

For Rigid Conduit & IMC

## Types LL, LR, TB, X, C

**Use:**

To provide access to conductors for pulling, splicing, maintenance and future changes/upgrades. Allows connection of straight conduit runs, branch conduit runs and 90° bends.

**Features:**

- Tapered threaded hubs (NPT).
- Raintight when used with gasketed covers.
- Malleable iron suitable for use in concrete.
- For covers and gaskets, see Pages AB4 and AB5.
- Complete interchangeability with other manufacturers' style "5" or "35" Conduit Bodies.
- Internal volume and maximum wire clearly marked on castings.

**Material/Finish:**

Malleable Iron/  
Zinc Electroplated Aluminum Enamel

**Optional Finish:**

For additional corrosion protection, specify Hot Dip Galvanized. Add suffix "G" to standard catalog number. Contact your local representative for pricing and availability.

**Third Party Certification:**



UL Listed E-18095  
Suitable for wet locations when used with gasketed covers.



CSA Certified: LR-9795  
Suitable for wet locations when used with gasketed covers.

**Applicable Third Party Standards:**

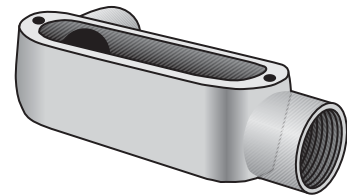
UL Standard: 514A  
CSA Standard: C22.2 No. 18  
Fed Spec: A-A-50563  
NEMA: FB-1, FB-2.10

**Dimensional Data:**

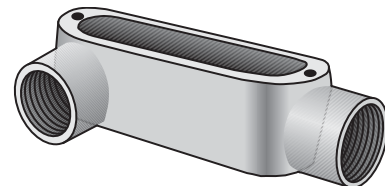
See Pages AB6 - AB8

**Note:** Conduit bodies are suitable for use in Class I, Div. 2 hazardous locations per NEC Section 501-4(B).

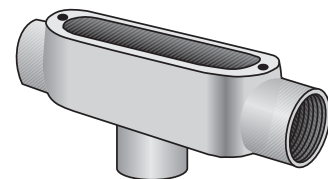
| Trade Size (inches) | Catalog Number<br>Malleable Iron<br>Zinc Plated |
|---------------------|---|
| 1/2                 | LL-50   |
| 3/4                 | LL-75   |
| 1                   | LL-100  |
| 1 1/4               | LL-125  |
| 1 1/2               | LL-150  |
| 2                   | LL-200  |
| 2 1/2               | LL-250  |
| 3                   | LL-300  |
| 3 1/2               | LL-350  |
| 4                   | LL-400  |
| 1/2                 | LR-50   |
| 3/4                 | LR-75   |
| 1                   | LR-100  |
| 1 1/4               | LR-125  |
| 1 1/2               | LR-150  |
| 2                   | LR-200  |
| 2 1/2               | LR-250  |
| 3                   | LR-300  |
| 3 1/2               | LR-350  |
| 4                   | LR-400  |
| 1/2                 | TB-50   |
| 3/4                 | TB-75   |
| 1                   | TB-100  |
| 1 1/4               | TB-125  |
| 1 1/2               | TB-150  |
| 2                   | TB-200  |
| 1/2                 | X-50  |
| 3/4                 | X-75  |
| 1                   | X-100   |
| 1 1/4               | X-125   |
| 1 1/2               | X-150   |
| 2                   | X-200   |
| 1/2                 | C-50  |
| 3/4                 | C-75  |
| 1                   | C-100   |
| 1 1/4               | C-125   |
| 1 1/2               | C-150   |
| 2                   | C-200   |
| 2 1/2               | C-250   |
| 3                   | C-300   |
| 3 1/2               | C-350   |
| 4                   | C-400   |



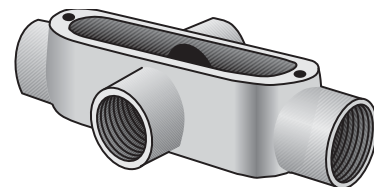
Type LL



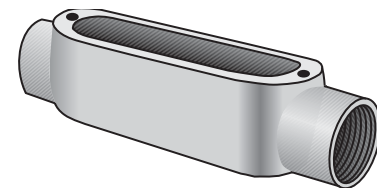
Type LR



Type TB



Type X



Type C

# Spec 5™ Conduit Body, Cover & Gasket Assemblies

For Rigid Conduit & IMC

## Types LB, LL, LR, C, T

### Use:

To provide access to conductors for pulling, splicing, maintenance and future changes/upgrades. Allows connection of straight conduit runs, branch conduit runs and 90° bends.


### Features:


- Tapered threaded hubs (NPT)
- Packaged complete under one Catalog Number
- Ready to use

### Material/Finish:

Conduit body - Malleable Iron  
Zinc Electroplated with Aluminum Enamel  
Cover - Type BS Steel Zinc Electroplated  
Gasket - Type SGN Neoprene

### Third Party Certification:

 UL Listed:  
E-18095  
Suitable for wet locations

 CSA Certified:  
LR-9795  
Suitable for wet locations.

### Applicable Third Party Standards:

UL Standard: 514A  
CSA Standard: C22.2 No. 18  
Fed Spec: A-A-50563  
NEMA: FB-1, FB-2.10

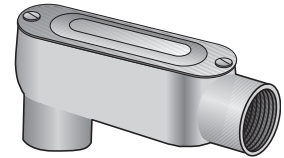
### Dimensional Data:

See Pages AB6 - AB8.

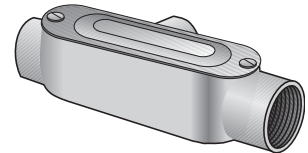
**Note:** For additional information, please refer to:

- Conduit Bodies on pages AB1 and AB2.
- Covers and Gaskets on page AB4.

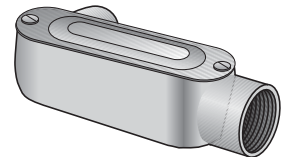
| Trade Size<br>(inches) | Catalog<br>Number |
|------------------------|-------------------|
| ½                      | LB-50CG           |
| ¾                      | LB-75CG           |
| 1                      | LB-100CG          |
| 1¼                     | LB-125CG          |
| 1½                     | LB-150CG          |
| 2                      | LB-200CG          |
| ½                      | T-50CG            |
| ¾                      | T-75CG            |
| 1                      | T-100CG           |
| 1¼                     | T-125CG           |
| 1½                     | T-150CG           |
| 2                      | T-200CG           |
| ½                      | LL-50CG           |
| ¾                      | LL-75CG           |
| 1                      | LL-100CG          |
| 1¼                     | LL-125CG          |
| 1½                     | LL-150CG          |
| 2                      | LL-200CG          |
| ½                      | LR-50CG           |
| ¾                      | LR-75CG           |
| 1                      | LR-100CG          |
| 1¼                     | LR-125CG          |
| 1½                     | LR-150CG          |
| 2                      | LR-200CG          |
| ½                      | C-50CG            |
| ¾                      | C-75CG            |
| 1                      | C-100CG           |
| 1¼                     | C-125CG           |
| 1½                     | C-150CG           |
| 2                      | C-200CG           |



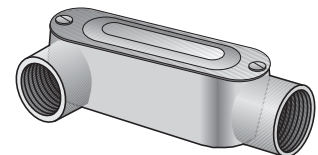
Type LB-CG



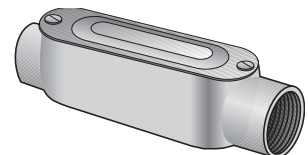
Type T-CG



Type LL-CG



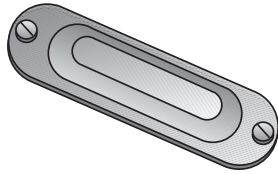
Type LR-CG



Type C-CG

# Spec 5™ Covers & Gaskets

For O-Z/Gedney Malleable Iron Conduit Bodies





Type BS-S

## Type BS-S Domed Top Design Cover

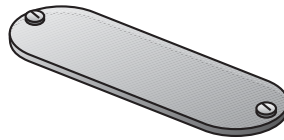
**Use:**  
To cover conduit body opening.

**Material/Finish:**  
Stamped Steel Pre-Galvanized  
Stainless Steel Screws  
Natural Finish

**Third Party Certification:**  
 UL Listed:  
E-18095  
Suitable for wet locations when used with gaskets, Type SGN or SG on malleable iron conduit bodies.

 CSA Certified:  
LR-9795  
Suitable for wet locations when used with gaskets, Type SGN or SG on malleable iron conduit bodies.

**Applicable Third Party Standards:**  
UL Standard: 514A  
CSA Standard: C22.2 No. 18  
Fed Spec: A-A-50563  
NEMA: FB-1, FB-2.10





Type BC-G

## Type BC-G Flat Top Design Cover

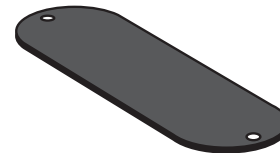
**Use:**  
To cover conduit body opening.

**Material/Finish:**  
Gray Iron/Hot Dip Galvanized stainless steel screws.

**Third Party Certification:**  
 UL Listed:  
E-18095  
Suitable for wet locations when used with gaskets, Type SG on malleable iron conduit bodies.

 CSA Certified:  
LR-9795  
Suitable for wet locations when used with gaskets, Type SG on malleable iron conduit bodies.

**Applicable Third Party Standards:**  
UL Standard: 514A  
CSA Standard: C22.2 No. 18  
Fed Spec: A-A-50563  
NEMA: FB-1, FB-2.10



Type SG & SGN

## Type SG & SGN Solid Cover Sealing Gasket

**Use:**  
To provide a worry-free, raintight seal when used with Type BS or BC covers.

**Material:**  
Velbuna Composition  
Closed-Cell Neoprene Foam Gasket  
Temperature Rating: 212°F/100°C

**Note:** UL/CSA not applicable.

| Trade Size (inches) | Catalog Number |
|---------------------|----------------|
| 1/2                 | BS-50S         |
| 3/4                 | BS-75S         |
| 1                   | BS-100S        |
| 1 1/4-1 1/2         | BS-125S        |
| 2                   | BS-200S        |
| 2 1/2-3             | BS-250S        |
| 3 1/2-4             | BS-350S*       |

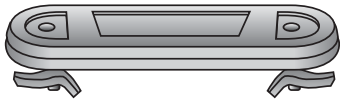
| Trade Size (inches) | Catalog Number |
|---------------------|----------------|
| 1/2                 | BC-50G         |
| 3/4                 | BC-75G         |
| 1                   | BC-100G        |
| 1 1/4-1 1/2         | BC-125G        |
| 2                   | BC-200G        |
| 2 1/2-3             | BC-250G        |
| 3 1/2-4             | BC-350G        |

| Trade Size (inches) | Catalog Number Velbuna | Catalog Number Neoprene |
|---------------------|------------------------|-------------------------|
| 1/2                 | SG-50                  | SGN-50                  |
| 3/4                 | SG-75                  | SGN-75                  |
| 1                   | SG-100                 | SGN-100                 |
| 1 1/4-1 1/2         | SG-125                 | SGN-125                 |
| 2                   | SG-200                 | SGN-200                 |
| 2 1/2-3             | SG-250                 | SGN-250                 |
| 3 1/2-4             | SG-350                 | SGN-350                 |

\* Flat Top Design Cover

# Spec 5™ Covers & Gaskets

For O-Z/Gedney Malleable Iron Conduit Bodies



Type BCC

## Type BCC Clip-On™ Cover

### Use:

To cover conduit body opening.

### Material/Finish:

Gray Iron/Zinc Electroplated  
Stainless Steel Screws  
Steel, Zinc-Plated Clips

### Third Party Certification:



UL Listed:  
E-18095

Suitable for wet locations when  
used with gaskets, Type SGNC on  
malleable iron conduit bodies.



CSA Certified:  
009795

Suitable for wet locations when  
used with gaskets, Type SGNC on  
malleable iron conduit bodies.

### Applicable Third Party Standards:

UL Standard: 514A  
CSA Standard: C22.2 No. 18  
Fed Spec: A-A-50563  
NEMA: FB-1, FB-2.10



Type SGNC

## Type SGNC Cover Gasket

### Use:

To provide a worry-free, raintight seal when  
used with Clip-On™ Type BCC cover.

### Material:

Closed-Cell Neoprene Foam Gasket  
Temperature Rating: 212°F/100°C

**Note:** UL/CSA not applicable.

| Trade Size<br>(inches) | Catalog<br>Number |
|------------------------|-------------------|
| ½                      | BCC-50            |
| ¾                      | BCC-75            |
| 1                      | BCC-100           |
| 1¼-1½                  | BCC-125           |
| 2                      | BCC-200           |
| 2½-3                   | BCC-250           |
| 3½-4                   | BCC-350           |

| Trade Size<br>(inches) | Catalog<br>Number |
|------------------------|-------------------|
| ½                      | SGNC-50           |
| ¾                      | SGNC-75           |
| 1                      | SGNC-100          |
| 1¼-1½                  | SGNC-125          |
| 2                      | SGNC-200          |
| 2½-3                   | SGNC-250          |
| 3½-4                   | SGNC-350          |

# Spec 5™ Malleable Iron Conduit Bodies

For Rigid Conduit & IMC

**Dimensional Data:**

| Type LB           |               | Dimensions in Inches |       |       |        |       |        |        | Volume<br>Cu. In. | Max No.<br>Conductors |
|-------------------|---------------|----------------------|-------|-------|--------|-------|--------|--------|-------------------|-----------------------|
| Catalog<br>Number | Trade<br>Size | B                    | C     | D     | F      | H     | J      |        |                   |                       |
|                   | LB-50         | 1/2                  | 1 1/8 | 1 1/8 | 4      | 1 1/2 | 4      | 4 5/8  | 4.0               | N/A                   |
|                   | LB-75         | 3/4                  | 1 1/8 | 1 1/8 | 4 5/8  | 1 5/8 | 4 5/8  | 5 1/8  | 7.0               | 3 #6AWG               |
|                   | LB-100        | 1                    | 1 1/8 | 2     | 5 3/8  | 1 7/8 | 5 3/8  | 6 1/4  | 12.0              | 3 #4AWG               |
|                   | LB-125        | 1 1/4                | 2 1/8 | 2 1/8 | 7 1/4  | 2 1/4 | 7      | 8 1/4  | 32.0              | 3 #2AWG               |
|                   | LB-150        | 1 1/2                | 2 3/8 | 2 3/4 | 7 3/8  | 2 3/8 | 7      | 8 3/4  | 36.0              | 3 #1/0AWG             |
|                   | LB-200        | 2                    | 3 1/4 | 3 3/8 | 9 3/8  | 2 3/4 | 9 3/8  | 10 3/8 | 70.0              | 3 #4/0AWG             |
|                   | LB-250        | 2 1/2                | 4 3/8 | 4     | 12 3/8 | 3 3/8 | 11 3/8 | 13 3/4 | 142.0             | 3 #300MCM             |
|                   | LB-300        | 3                    | 4 3/8 | 4 3/4 | 12 3/8 | 3 3/8 | 11 3/8 | 13 3/4 | 173.0             | 3 #400MCM             |
|                   | LB-350        | 3 1/2                | 5 3/8 | 5 1/2 | 15     | 4 1/4 | 14     | 16 3/4 | 292.0             | 3 #500MCM             |
|                   | LB-400        | 4                    | 5 3/8 | 5 3/8 | 15     | 4 1/4 | 14     | 16 3/4 | 324.0             | 3 #500MCM             |
|                   | LB-50G        | 1/2                  | 1 1/8 | 1 1/8 | 4      | 1 1/2 | 4      | 4 5/8  | 4.0               | N/A                   |
|                   | LB-75G        | 3/4                  | 1 1/8 | 1 1/8 | 4 5/8  | 1 5/8 | 4 5/8  | 5 1/8  | 7.0               | 3 #6AWG               |
|                   | LB-100G       | 1                    | 1 1/8 | 2     | 5 3/8  | 1 7/8 | 5 3/8  | 6 1/4  | 12.0              | 3 #4AWG               |
|                   | LB-125G       | 1 1/4                | 2 1/8 | 2 1/8 | 7 1/4  | 2 1/4 | 7      | 8 1/4  | 32.0              | 3 #2AWG               |
|                   | LB-150G       | 1 1/2                | 2 3/8 | 2 3/4 | 7 3/8  | 2 3/8 | 7      | 8 3/4  | 36.0              | 3 #1/0AWG             |
|                   | LB-200G       | 2                    | 3 1/4 | 3 3/8 | 9 3/8  | 2 3/4 | 9 3/8  | 10 3/8 | 70.0              | 3 #4/0AWG             |
|                   | LB-250G       | 2 1/2                | 4 3/8 | 4     | 12 3/8 | 3 3/8 | 11 3/8 | 13 3/4 | 142.0             | 3 #300MCM             |
|                   | LB-300G       | 3                    | 4 3/8 | 4 3/4 | 12 3/8 | 3 3/8 | 11 3/8 | 13 3/4 | 173.0             | 3 #400MCM             |
|                   | LB-350G       | 3 1/2                | 5 3/8 | 5 1/2 | 15     | 4 1/4 | 13 3/8 | 16 3/4 | 292.0             | 3 #500MCM             |
|                   | LB-400G       | 4                    | 5 3/8 | 5 3/8 | 15     | 4 1/4 | 14     | 16 3/4 | 324.0             | 3 #500MCM             |

| Type T            |               | Dimensions in Inches |        |       |       |        | Volume<br>Cu. In. | Max No.<br>Conductors |           |
|-------------------|---------------|----------------------|--------|-------|-------|--------|-------------------|-----------------------|-----------|
| Catalog<br>Number | Trade<br>Size | A                    | B      | C     | D     | G      |                   |                       |           |
|                   | T-50          | 1/2                  | 5 3/8  | 1 1/8 | 1 1/8 | 4      | 1 1/8             | 4.0                   | N/A       |
|                   | T-75          | 3/4                  | 6 1/8  | 1 1/8 | 1 1/8 | 4 5/8  | 1 5/8             | 7.0                   | 3 #6AWG   |
|                   | T-100         | 1                    | 7 1/8  | 1 1/8 | 2     | 5 3/8  | 1 3/4             | 12.0                  | 3 #4AWG   |
|                   | T-125         | 1 1/4                | 9 1/8  | 2 3/8 | 2 3/8 | 7 1/4  | 2 1/4             | 32.0                  | 3 #2AWG   |
|                   | T-150         | 1 1/2                | 9 3/4  | 2 3/8 | 2 3/4 | 7 1/4  | 2 1/4             | 36.0                  | 3 #1AWG   |
|                   | T-200         | 2                    | 11 1/8 | 3 1/4 | 3 1/2 | 9 3/8  | 2 3/8             | 70.0                  | 3 #2/0AWG |
|                   | T-250         | 2 1/2                | 15 3/8 | 4 3/8 | 4     | 12 3/8 | 3 3/8             | 142.0                 | 3 #4/0AWG |
|                   | T-300         | 3                    | 15 3/8 | 4 3/8 | 4 3/4 | 12 3/8 | 3 3/8             | 173.0                 | 3 #4/0AWG |
|                   | T-350         | 3 1/2                | 18 3/8 | 5 1/2 | 5 1/2 | 15     | 4 1/2             | 290.0                 | 3 #350MCM |
|                   | T-400         | 4                    | 18 3/8 | 5 1/2 | 5 1/2 | 15     | 4 1/2             | 324.0                 | 3 #350MCM |
|                   | T-50G         | 1/2                  | 5 3/8  | 1 1/8 | 1 1/8 | 4      | 1 1/8             | 4.0                   | N/A       |
|                   | T-75G         | 3/4                  | 6 1/8  | 1 1/8 | 1 1/8 | 4 5/8  | 1 5/8             | 7.0                   | 3 #6AWG   |
|                   | T-100G        | 1                    | 7 1/8  | 1 1/8 | 2     | 5 3/8  | 1 3/4             | 12.0                  | 3 #4AWG   |
|                   | T-125G        | 1 1/4                | 9 1/8  | 2 3/8 | 2 3/8 | 7 1/4  | 2 1/4             | 32.0                  | 3 #2AWG   |
|                   | T-150G        | 1 1/2                | 9 3/4  | 2 3/8 | 2 3/4 | 7 1/4  | 2 1/4             | 36.0                  | 3 #1AWG   |
|                   | T-200G        | 2                    | 11 1/8 | 3 1/4 | 3 1/2 | 9 3/8  | 2 3/8             | 70.0                  | 3 #2/0AWG |
|                   | T-250G        | 2 1/2                | 15 3/8 | 4 3/8 | 4     | 12 3/8 | 3 3/8             | 142.0                 | 3 #4/0AWG |
|                   | T-300G        | 3                    | 15 3/8 | 4 3/8 | 4 3/4 | 12 3/8 | 3 3/8             | 173.0                 | 3 #4/0AWG |
|                   | T-350G        | 3 1/2                | 18 3/8 | 5 1/2 | 5 1/2 | 15     | 4 1/2             | 290.0                 | 3 #350MCM |
|                   | T-400G        | 4                    | 18 3/8 | 5 1/2 | 5 1/2 | 15     | 4 1/2             | 324.0                 | 3 #350MCM |

# Spec 5™ Malleable Iron Conduit Bodies

For Rigid Conduit & IMC

**Dimensional Data:**

| Type LL        |            | Dimensions in Inches |       |       |        |       |        |        | Volume Cu. In. | Max No. Conductors |
|----------------|------------|----------------------|-------|-------|--------|-------|--------|--------|----------------|--------------------|
| Catalog Number | Trade Size | B                    | C     | D     | G      | H     | J      |        |                |                    |
|                | LL-50      | 1/2                  | 1 1/8 | 1 3/8 | 4      | 1 3/8 | 4      | 4 5/8  | 4.0            | N/A                |
|                | LL-75      | 3/4                  | 1 3/8 | 1 5/8 | 4 5/8  | 1 5/8 | 4 3/8  | 5 1/8  | 7.0            | 3 #6AWG            |
|                | LL-100     | 1                    | 1 5/8 | 2     | 5 5/8  | 1 3/4 | 5 3/8  | 6 1/4  | 12.0           | 3 #4AWG            |
|                | LL-125     | 1 1/4                | 2 1/8 | 2 3/8 | 7 1/4  | 2 1/4 | 6 3/8  | 8 1/4  | 32.0           | 3 #2AWG            |
|                | LL-150     | 1 1/2                | 2 3/8 | 2 5/8 | 7 3/4  | 2 3/4 | 6 5/8  | 8 3/4  | 36.0           | 3 #1AWG            |
|                | LL-200     | 2                    | 3 1/4 | 3 1/2 | 9 5/8  | 2 5/8 | 9      | 10 5/8 | 70.0           | 3 #2/0AWG          |
|                | LL-250     | 2 1/2                | 4 3/8 | 4     | 12 3/8 | 3 3/8 | 11 1/8 | 13 3/4 | 142.0          | 3 #4/0AWG          |
|                | LL-300     | 3                    | 4 5/8 | 4 3/4 | 12 3/8 | 3 3/8 | 11 1/8 | 13 3/4 | 173.0          | 3 #4/0AWG          |
|                | LL-350     | 3 1/2                | 5 1/8 | 5 5/8 | 15     | 4 1/2 | 13 3/8 | 16 3/4 | 292.0          | 3 #350MCM          |
|                | LL-400     | 4                    | 5 3/8 | 5 5/8 | 15     | 4 1/2 | 13 3/8 | 16 3/4 | 324.0          | 3 #350MCM          |

| Type LR        |            | Dimensions in Inches |       |       |        |       |        |        | Volume Cu. In. | Max No. Conductors |
|----------------|------------|----------------------|-------|-------|--------|-------|--------|--------|----------------|--------------------|
| Catalog Number | Trade Size | B                    | C     | D     | G      | H     | J      |        |                |                    |
|                | LR-50      | 1/2                  | 1 1/8 | 1 3/8 | 4      | 1 3/8 | 4      | 4 5/8  | 4.0            | N/A                |
|                | LR-75      | 3/4                  | 1 3/8 | 1 5/8 | 4 5/8  | 1 5/8 | 4 3/8  | 5 1/8  | 7.0            | 3 #6AWG            |
|                | LR-100     | 1                    | 1 5/8 | 2     | 5 5/8  | 1 3/4 | 5 3/8  | 6 1/4  | 12.0           | 3 #4AWG            |
|                | LR-125     | 1 1/4                | 2 1/8 | 2 3/8 | 7 1/4  | 2 1/4 | 7      | 8 1/4  | 32.0           | 3 #2AWG            |
|                | LR-150     | 1 1/2                | 2 3/8 | 2 5/8 | 7 3/4  | 2 3/4 | 7      | 8 3/4  | 36.0           | 3 #1AWG            |
|                | LR-200     | 2                    | 3 1/4 | 3 1/2 | 9 5/8  | 2 5/8 | 9      | 10 5/8 | 70.0           | 3 #2/0AWG          |
|                | LR-250     | 2 1/2                | 4 3/8 | 4     | 12 3/8 | 3 3/8 | 11 1/8 | 13 3/4 | 142.0          | 3 #4/0AWG          |
|                | LR-300     | 3                    | 4 5/8 | 4 3/4 | 12 3/8 | 3 3/8 | 11 1/8 | 13 3/4 | 173.0          | 3 #4/0AWG          |
|                | LR-350     | 3 1/2                | 5 1/8 | 5 5/8 | 15     | 4 1/2 | 13 3/8 | 16 3/4 | 292.0          | 3 #350MCM          |
|                | LR-400     | 4                    | 5 3/8 | 5 5/8 | 15     | 4 1/2 | 13 3/8 | 16 3/4 | 324.0          | 3 #350MCM          |

| Type TB        |            | Dimensions in Inches |        |       |       |       |       | Volume Cu. In. | Max No. Conductors |
|----------------|------------|----------------------|--------|-------|-------|-------|-------|----------------|--------------------|
| Catalog Number | Trade Size | A                    | B      | C     | D     | F     |       |                |                    |
|                | TB-50      | 1/2                  | 5 5/8  | 1 3/8 | 1 3/8 | 4     | 1 1/2 | 4.0            | N/A                |
|                | TB-75      | 3/4                  | 6 1/4  | 1 1/2 | 1 5/8 | 4 5/8 | 1 1/2 | 7.0            | 3 #6AWG            |
|                | TB-100     | 1                    | 7 1/8  | 1 5/8 | 2     | 5 5/8 | 1 5/8 | 13.0           | 3 #4AWG            |
|                | TB-125     | 1 1/4                | 9 5/8  | 2 3/8 | 2 3/8 | 7 1/4 | 2 1/4 | 32.0           | 3 #2AWG            |
|                | TB-150     | 1 1/2                | 9 3/4  | 2 5/8 | 2 3/4 | 7 1/4 | 2 3/8 | 36.0           | 3 #1AWG            |
|                | TB-200     | 2                    | 11 1/8 | 3 3/8 | 3 1/2 | 9 5/8 | 2 3/4 | 70.0           | 3 #2/0AWG          |

# Spec 5™ Malleable Iron Conduit Bodies

For Rigid Conduit & IMC

**Dimensional Data:**

| Type X         |            | Dimensions in Inches |       |       |       |       |      |           | Volume Cu. In. | Max No. Conductors |
|----------------|------------|----------------------|-------|-------|-------|-------|------|-----------|----------------|--------------------|
| Catalog Number | Trade Size | A                    | B     | C     | D     | E     |      |           |                |                    |
| X-50           | 1/2        | 5 3/8                | 1 3/8 | 1 3/8 | 4     | 2 3/4 | 4.0  | N/A       |                |                    |
| X-75           | 3/4        | 6 1/8                | 1 3/8 | 1 3/8 | 4 5/8 | 3 1/8 | 7.0  | 3 #6AWG   |                |                    |
| X-100          | 1          | 7 1/8                | 1 3/8 | 2     | 5 3/8 | 3 1/2 | 12.0 | 3 #4AWG   |                |                    |
| X-125          | 1 1/4      | 9 1/8                | 2 3/8 | 2 3/8 | 7 1/4 | 4 1/2 | 32.0 | 3 #2AWG   |                |                    |
| X-150          | 1 1/2      | 9 3/4                | 2 3/8 | 2 3/8 | 7 1/4 | 4 3/8 | 36.0 | 3 #1AWG   |                |                    |
| X-200          | 2          | 11 3/8               | 3 3/8 | 3 1/2 | 9 1/2 | 5 1/4 | 70.0 | 3 #2/0AWG |                |                    |



| Type C         |            | Dimensions in Inches |       |       |        |       | Volume Cu. In. | Max No. Conductors |
|----------------|------------|----------------------|-------|-------|--------|-------|----------------|--------------------|
| Catalog Number | Trade Size | A                    | B     | C     | D      |       |                |                    |
| C-50           | 1/2        | 5 3/8                | 1 3/8 | 1 3/8 | 4      | 4.0   | N/A            |                    |
| C-75           | 3/4        | 6 1/8                | 1 3/8 | 1 3/8 | 4 5/8  | 7.0   | 3 #6AWG        |                    |
| C-100          | 1          | 7 1/8                | 1 3/8 | 2     | 5 3/8  | 12.0  | 3 #4AWG        |                    |
| C-125          | 1 1/4      | 9 1/8                | 2 3/8 | 2 3/8 | 7 1/4  | 32.0  | 3 #2AWG        |                    |
| C-150          | 1 1/2      | 9 3/4                | 2 3/8 | 2 3/4 | 7 1/4  | 36.0  | 3 #1AWG        |                    |
| C-200          | 2          | 11 3/8               | 3 3/8 | 3 1/2 | 9 3/8  | 70.0  | 3 #2/0AWG      |                    |
| C-250          | 2 1/2      | 15 3/8               | 4 3/8 | 4     | 12 3/8 | 153.0 | 3 #4/0AWG      |                    |
| C-300          | 3          | 15 3/8               | 4 3/8 | 4 3/4 | 12 3/8 | 181.0 | 3 #4/0AWG      |                    |
| C-350          | 3 1/2      | 18 3/8               | 5 1/2 | 5 1/2 | 15     | 290.0 | 3 #350MCM      |                    |
| C-400          | 4          | 18 3/8               | 5 1/2 | 5 3/8 | 15     | 320.0 | 3 #350MCM      |                    |





# Spec 5™ Malleable Iron Conduit Bodies

For Rigid Conduit & IMC

## Types LB, T, LB-G & T-G

**Use:**

To provide access to conductors for pulling, splicing, maintenance and future changes/upgrades. Allows connection of straight conduit runs, branch conduit runs and 90° bends.

**Features:**

- Tapered threaded hubs (NPT).
- Raintight when used with gasketed covers.
- Malleable iron suitable for use in concrete.
- For covers and gaskets, see Pages AB4 and AB5.
- Complete interchangeability with other manufacturers' style "5" or "35" Conduit Bodies.
- Internal volume and maximum wire clearly marked on castings.

**Material/Finish:**

Malleable Iron/  
Zinc Electroplated Aluminum Enamel  
Catalog number with suffix "G"  
Malleable Iron with Hot Dip Galvanize

**Third Party Certification:**

-  UL Listed E-18095  
Suitable for wet locations when used with gasketed covers.
-  CSA Certified: 009795  
Suitable for wet locations when used with gasketed covers.

**Applicable Third Party Standards:**

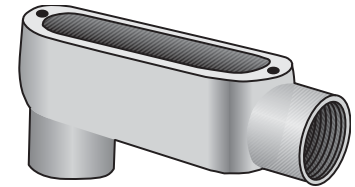
UL Standard: 514A  
CSA Standard: C22.2 No. 18  
Fed Spec: A-A-50563  
NEMA: FB-1, FB-2.10

**Dimensional Data:**

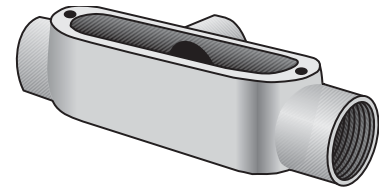
See Pages AB6 - AB8

**Note:** Conduit bodies are suitable for use in Class I, Div. 2 hazardous locations per NEC Section 501-4(B).

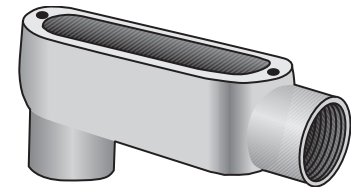
| Trade Size (inches) | Catalog Number<br>Malleable Iron<br>Zinc Plated |
|---------------------|---|
| 1/2                 | LB-50   |
| 3/4                 | LB-75   |
| 1                   | LB-100  |
| 1 1/4               | LB-125  |
| 1 1/2               | LB-150  |
| 2                   | LB-200  |
| 2 1/2               | LB-250  |
| 3                   | LB-300  |
| 3 1/2               | LB-350  |
| 4                   | LB-400  |
| 1/2                 | T-50  |
| 3/4                 | T-75  |
| 1                   | T-100   |
| 1 1/4               | T-125   |
| 1 1/2               | T-150   |
| 2                   | T-200   |
| 2 1/2               | T-250   |
| 3                   | T-300   |
| 3 1/2               | T-350   |
| 4                   | T-400   |



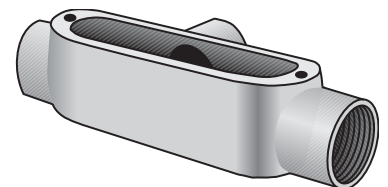
Type LB



Type T



Type LB-G  
Hot Dip Galvanized



Type T-G  
Hot Dip Galvanized

| Trade Size (inches) | Catalog Number<br>Malleable Iron<br>Hot Dip Galvanized |
|---------------------|--|
| 1/2                 | LB-50G   |
| 3/4                 | LB-75G   |
| 1                   | LB-100G  |
| 1 1/4               | LB-125G  |
| 1 1/2               | LB-150G  |
| 2                   | LB-200G  |
| 2 1/2               | LB-250G  |
| 3                   | LB-300G  |
| 3 1/2               | LB-350G  |
| 4                   | LB-400G  |
| 1/2                 | T-50G  |
| 3/4                 | T-75G  |
| 1                   | T-100G   |
| 1 1/4               | T-125G   |
| 1 1/2               | T-150G   |
| 2                   | T-200G   |
| 2 1/2               | T-250G   |
| 3                   | T-300G   |
| 3 1/2               | T-350G   |
| 4                   | T-400G   |

# Spec 5™ Malleable Iron Conduit Bodies

For Rigid Conduit & IMC

## Types LL, LR, TB, X, C

**Use:**

To provide access to conductors for pulling, splicing, maintenance and future changes/upgrades. Allows connection of straight conduit runs, branch conduit runs and 90° bends.

**Features:**

- Tapered threaded hubs (NPT).
- Raintight when used with gasketed covers.
- Malleable iron suitable for use in concrete.
- For covers and gaskets, see Pages AB4 and AB5.
- Complete interchangeability with other manufacturers' style "5" or "35" Conduit Bodies.
- Internal volume and maximum wire clearly marked on castings.

**Material/Finish:**

Malleable Iron/  
Zinc Electroplated Aluminum Enamel

**Optional Finish:**

For additional corrosion protection, specify Hot Dip Galvanized. Add suffix "G" to standard catalog number. Contact your local representative for pricing and availability.

**Third Party Certification:**



UL Listed E-18095  
Suitable for wet locations when used with gasketed covers.



CSA Certified: LR-9795  
Suitable for wet locations when used with gasketed covers.

**Applicable Third Party Standards:**

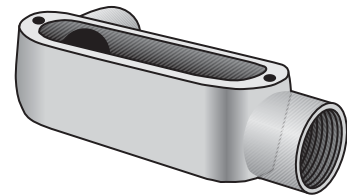
UL Standard: 514A  
CSA Standard: C22.2 No. 18  
Fed Spec: A-A-50563  
NEMA: FB-1, FB-2.10

**Dimensional Data:**

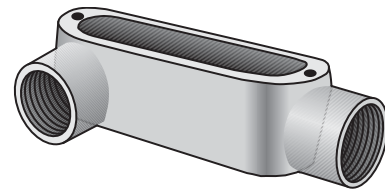
See Pages AB6 - AB8

**Note:** Conduit bodies are suitable for use in Class I, Div. 2 hazardous locations per NEC Section 501-4(B).

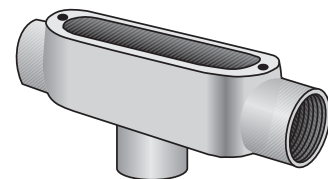
| Trade Size (inches) | Catalog Number<br>Malleable Iron<br>Zinc Plated |
|---------------------|---|
| 1/2                 | LL-50   |
| 3/4                 | LL-75   |
| 1                   | LL-100  |
| 1 1/4               | LL-125  |
| 1 1/2               | LL-150  |
| 2                   | LL-200  |
| 2 1/2               | LL-250  |
| 3                   | LL-300  |
| 3 1/2               | LL-350  |
| 4                   | LL-400  |
| 1/2                 | LR-50   |
| 3/4                 | LR-75   |
| 1                   | LR-100  |
| 1 1/4               | LR-125  |
| 1 1/2               | LR-150  |
| 2                   | LR-200  |
| 2 1/2               | LR-250  |
| 3                   | LR-300  |
| 3 1/2               | LR-350  |
| 4                   | LR-400  |
| 1/2                 | TB-50   |
| 3/4                 | TB-75   |
| 1                   | TB-100  |
| 1 1/4               | TB-125  |
| 1 1/2               | TB-150  |
| 2                   | TB-200  |
| 1/2                 | X-50  |
| 3/4                 | X-75  |
| 1                   | X-100   |
| 1 1/4               | X-125   |
| 1 1/2               | X-150   |
| 2                   | X-200   |
| 1/2                 | C-50  |
| 3/4                 | C-75  |
| 1                   | C-100   |
| 1 1/4               | C-125   |
| 1 1/2               | C-150   |
| 2                   | C-200   |
| 2 1/2               | C-250   |
| 3                   | C-300   |
| 3 1/2               | C-350   |
| 4                   | C-400   |



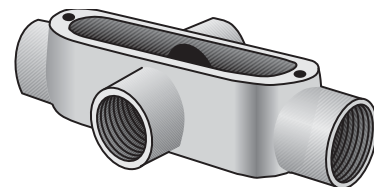
Type LL



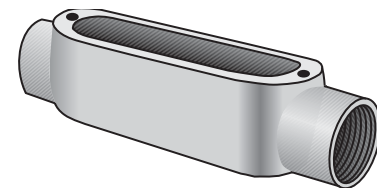
Type LR



Type TB



Type X



Type C

# Spec 5™ Conduit Body, Cover & Gasket Assemblies

For Rigid Conduit & IMC

## Types LB, LL, LR, C, T

**Use:**

To provide access to conductors for pulling, splicing, maintenance and future changes/upgrades. Allows connection of straight conduit runs, branch conduit runs and 90° bends.

**Features:**

- Tapered threaded hubs (NPT)
- Packaged complete under one Catalog Number
- Ready to use

**Material/Finish:**

Conduit body - Malleable Iron  
Zinc Electroplated with Aluminum Enamel  
Cover - Type BS Steel Zinc Electroplated  
Gasket - Type SGN Neoprene

**Third Party Certification:**

 UL Listed:  
E-18095  
Suitable for wet locations

 CSA Certified:  
LR-9795  
Suitable for wet locations.

**Applicable Third Party Standards:**

UL Standard: 514A  
CSA Standard: C22.2 No. 18  
Fed Spec: A-A-50563  
NEMA: FB-1, FB-2.10

**Dimensional Data:**

See Pages AB6 - AB8.

**Note:** For additional information, please refer to:

- Conduit Bodies on pages AB1 and AB2.
- Covers and Gaskets on page AB4.

| Trade Size (inches) | Catalog Number |
|---------------------|----------------|
| 1/2                 | LB-50CG        |
| 3/4                 | LB-75CG        |
| 1                   | LB-100CG       |
| 1 1/4               | LB-125CG       |
| 1 1/2               | LB-150CG       |
| 2                   | LB-200CG       |
| 1/2                 | T-50CG         |
| 3/4                 | T-75CG         |
| 1                   | T-100CG        |
| 1 1/4               | T-125CG        |
| 1 1/2               | T-150CG        |
| 2                   | T-200CG        |
| 1/2                 | LL-50CG        |
| 3/4                 | LL-75CG        |
| 1                   | LL-100CG       |
| 1 1/4               | LL-125CG       |
| 1 1/2               | LL-150CG       |
| 2                   | LL-200CG       |
| 1/2                 | LR-50CG        |
| 3/4                 | LR-75CG        |
| 1                   | LR-100CG       |
| 1 1/4               | LR-125CG       |
| 1 1/2               | LR-150CG       |
| 2                   | LR-200CG       |
| 1/2                 | C-50CG         |
| 3/4                 | C-75CG         |
| 1                   | C-100CG        |
| 1 1/4               | C-125CG        |
| 1 1/2               | C-150CG        |
| 2                   | C-200CG        |



Type LB-CG



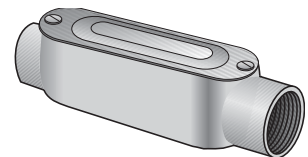
Type T-CG



Type LL-CG



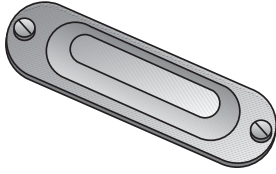
Type LR-CG



Type C-CG

# Spec 5™ Covers & Gaskets

For O-Z/Gedney Malleable Iron Conduit Bodies



Type BS-S

## Type BS-S Domed Top Design Cover

**Use:**  
To cover conduit body opening.

**Material/Finish:**  
Stamped Steel Pre-Galvanized  
Stainless Steel Screws  
Natural Finish

**Third Party Certification:**  
 UL Listed:  
E-18095  
Suitable for wet locations when used with gaskets, Type SGN or SG on malleable iron conduit bodies.

 CSA Certified:  
LR-9795  
Suitable for wet locations when used with gaskets, Type SGN or SG on malleable iron conduit bodies.

**Applicable Third Party Standards:**  
 UL Standard: 514A  
 CSA Standard: C22.2 No. 18  
 Fed Spec: A-A-50563  
 NEMA: FB-1, FB-2.10



Type BC-G

## Type BC-G Flat Top Design Cover

**Use:**  
To cover conduit body opening.

**Material/Finish:**  
Gray Iron/Hot Dip Galvanized stainless steel screws.

**Third Party Certification:**  
 UL Listed:  
E-18095  
Suitable for wet locations when used with gaskets, Type SG on malleable iron conduit bodies.

 CSA Certified:  
LR-9795  
Suitable for wet locations when used with gaskets, Type SG on malleable iron conduit bodies.

**Applicable Third Party Standards:**  
 UL Standard: 514A  
 CSA Standard: C22.2 No. 18  
 Fed Spec: A-A-50563  
 NEMA: FB-1, FB-2.10



Type SG & SGN

## Type SG & SGN Solid Cover Sealing Gasket

**Use:**  
To provide a worry-free, raintight seal when used with Type BS or BC covers.

**Material:**  
Velbuna Composition  
Closed-Cell Neoprene Foam Gasket  
Temperature Rating: 212°F/100°C

**Note:** UL/CSA not applicable.

| Trade Size (inches) | Catalog Number |
|---------------------|----------------|
| 1/2                 | BS-50S         |
| 3/4                 | BS-75S         |
| 1                   | BS-100S        |
| 1 1/4-1 1/2         | BS-125S        |
| 2                   | BS-200S        |
| 2 1/2-3             | BS-250S        |
| 3 1/2-4             | BS-350S*       |

| Trade Size (inches) | Catalog Number |
|---------------------|----------------|
| 1/2                 | BC-50G         |
| 3/4                 | BC-75G         |
| 1                   | BC-100G        |
| 1 1/4-1 1/2         | BC-125G        |
| 2                   | BC-200G        |
| 2 1/2-3             | BC-250G        |
| 3 1/2-4             | BC-350G        |

| Trade Size (inches) | Catalog Number Velbuna | Catalog Number Neoprene |
|---------------------|------------------------|-------------------------|
| 1/2                 | SG-50                  | SGN-50                  |
| 3/4                 | SG-75                  | SGN-75                  |
| 1                   | SG-100                 | SGN-100                 |
| 1 1/4-1 1/2         | SG-125                 | SGN-125                 |
| 2                   | SG-200                 | SGN-200                 |
| 2 1/2-3             | SG-250                 | SGN-250                 |
| 3 1/2-4             | SG-350                 | SGN-350                 |

\* Flat Top Design Cover

# Spec 5™ Covers & Gaskets

For O-Z/Gedney Malleable Iron Conduit Bodies



Type BCC

## Type BCC Clip-On™ Cover

### Use:

To cover conduit body opening.

### Material/Finish:

Gray Iron/Zinc Electroplated  
Stainless Steel Screws  
Steel, Zinc-Plated Clips

### Third Party Certification:



UL Listed:  
E-18095

Suitable for wet locations when  
used with gaskets, Type SGNC on  
malleable iron conduit bodies.



CSA Certified:  
009795

Suitable for wet locations when  
used with gaskets, Type SGNC on  
malleable iron conduit bodies.

### Applicable Third Party Standards:

UL Standard: 514A  
CSA Standard: C22.2 No. 18  
Fed Spec: A-A-50563  
NEMA: FB-1, FB-2.10



Type SGNC

## Type SGNC Cover Gasket

### Use:

To provide a worry-free, raintight seal when  
used with Clip-On™ Type BCC cover.

### Material:

Closed-Cell Neoprene Foam Gasket  
Temperature Rating: 212°F/100°C

**Note:** UL/CSA not applicable.

| Trade Size<br>(inches) | Catalog<br>Number |
|------------------------|-------------------|
| ½                      | BCC-50            |
| ¾                      | BCC-75            |
| 1                      | BCC-100           |
| 1¼-1½                  | BCC-125           |
| 2                      | BCC-200           |
| 2½-3                   | BCC-250           |
| 3½-4                   | BCC-350           |

| Trade Size<br>(inches) | Catalog<br>Number |
|------------------------|-------------------|
| ½                      | SGNC-50           |
| ¾                      | SGNC-75           |
| 1                      | SGNC-100          |
| 1¼-1½                  | SGNC-125          |
| 2                      | SGNC-200          |
| 2½-3                   | SGNC-250          |
| 3½-4                   | SGNC-350          |

# Spec 5™ Malleable Iron Conduit Bodies

For Rigid Conduit & IMC

**Dimensional Data:**

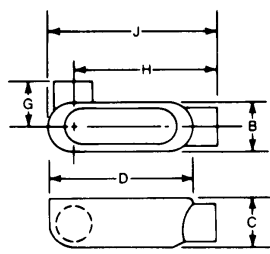
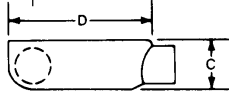
| Type LB | Catalog Number | Trade Size | Dimensions in Inches |       |        |       |        |        | Volume Cu. In. | Max No. Conductors |
|---------|----------------|------------|----------------------|-------|--------|-------|--------|--------|----------------|--------------------|
|         |                |            | B                    | C     | D      | F     | H      | J      |                |                    |
|         | LB-50          | 1/2        | 1 1/8                | 1 1/8 | 4      | 1 1/2 | 4      | 4 5/8  | 4.0            | N/A                |
|         | LB-75          | 3/4        | 1 1/8                | 1 1/8 | 4 5/8  | 1 1/8 | 4 5/8  | 5 1/8  | 7.0            | 3 #6AWG            |
|         | LB-100         | 1          | 1 1/8                | 2     | 5 3/8  | 1 1/8 | 5 3/8  | 6 1/4  | 12.0           | 3 #4AWG            |
|         | LB-125         | 1 1/4      | 2 1/8                | 2 1/8 | 7 1/4  | 2 1/4 | 7      | 8 1/4  | 32.0           | 3 #2AWG            |
|         | LB-150         | 1 1/2      | 2 1/8                | 2 3/4 | 7 3/8  | 2 3/8 | 7      | 8 1/4  | 36.0           | 3 #1/0AWG          |
|         | LB-200         | 2          | 3 1/4                | 3 3/8 | 9 3/8  | 2 3/4 | 9 3/8  | 10 3/8 | 70.0           | 3 #4/0AWG          |
|         | LB-250         | 2 1/2      | 4 3/8                | 4     | 12 3/8 | 3 3/8 | 11 3/8 | 13 3/4 | 142.0          | 3 #300MCM          |
|         | LB-300         | 3          | 4 3/8                | 4 3/4 | 12 3/8 | 3 3/8 | 11 3/8 | 13 3/4 | 173.0          | 3 #400MCM          |
|         | LB-350         | 3 1/2      | 5 1/8                | 5 1/2 | 15     | 4 1/4 | 14     | 16 1/4 | 292.0          | 3 #500MCM          |
|         | LB-400         | 4          | 5 1/8                | 5 1/8 | 15     | 4 1/4 | 14     | 16 1/4 | 324.0          | 3 #500MCM          |
|         | LB-50G         | 1/2        | 1 1/8                | 1 1/8 | 4      | 1 1/2 | 4      | 4 5/8  | 4.0            | N/A                |
|         | LB-75G         | 3/4        | 1 1/8                | 1 1/8 | 4 5/8  | 1 1/8 | 4 5/8  | 5 1/8  | 7.0            | 3 #6AWG            |
|         | LB-100G        | 1          | 1 1/8                | 2     | 5 3/8  | 1 1/8 | 5 3/8  | 6 1/4  | 12.0           | 3 #4AWG            |
|         | LB-125G        | 1 1/4      | 2 1/8                | 2 1/8 | 7 1/4  | 2 1/4 | 7      | 8 1/4  | 32.0           | 3 #2AWG            |
|         | LB-150G        | 1 1/2      | 2 1/8                | 2 3/4 | 7 3/8  | 2 3/8 | 7      | 8 1/4  | 36.0           | 3 #1/0AWG          |
|         | LB-200G        | 2          | 3 1/4                | 3 3/8 | 9 3/8  | 2 3/4 | 9 3/8  | 10 3/8 | 70.0           | 3 #4/0AWG          |
|         | LB-250G        | 2 1/2      | 4 3/8                | 4     | 12 3/8 | 3 3/8 | 11 3/8 | 13 3/4 | 142.0          | 3 #300MCM          |
|         | LB-300G        | 3          | 4 3/8                | 4 3/4 | 12 3/8 | 3 3/8 | 11 3/8 | 13 3/4 | 173.0          | 3 #400MCM          |
|         | LB-350G        | 3 1/2      | 5 1/8                | 5 1/2 | 15     | 4 1/4 | 13 3/8 | 16 1/4 | 292.0          | 3 #500MCM          |
|         | LB-400G        | 4          | 5 1/8                | 5 1/8 | 15     | 4 1/4 | 14     | 16 1/4 | 324.0          | 3 #500MCM          |

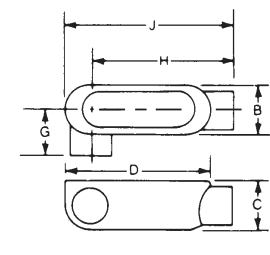
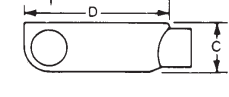
| Type T | Catalog Number | Trade Size | Dimensions in Inches |       |       |        |       | Volume Cu. In. | Max No. Conductors |
|--------|----------------|------------|----------------------|-------|-------|--------|-------|----------------|--------------------|
|        |                |            | A                    | B     | C     | D      | G     |                |                    |
|        | T-50           | 1/2        | 5 3/8                | 1 1/8 | 1 1/8 | 4      | 1 1/8 | 4.0            | N/A                |
|        | T-75           | 3/4        | 6 1/8                | 1 1/8 | 1 1/8 | 4 5/8  | 1 1/8 | 7.0            | 3 #6AWG            |
|        | T-100          | 1          | 7 1/8                | 1 1/8 | 2     | 5 3/8  | 1 3/4 | 12.0           | 3 #4AWG            |
|        | T-125          | 1 1/4      | 9 1/8                | 2 3/8 | 2 3/8 | 7 1/4  | 2 1/4 | 32.0           | 3 #2AWG            |
|        | T-150          | 1 1/2      | 9 1/4                | 2 3/8 | 2 3/4 | 7 1/4  | 2 1/4 | 36.0           | 3 #1AWG            |
|        | T-200          | 2          | 11 1/8               | 3 1/4 | 3 1/2 | 9 3/8  | 2 3/8 | 70.0           | 3 #2/0AWG          |
|        | T-250          | 2 1/2      | 15 3/8               | 4 3/8 | 4     | 12 3/8 | 3 3/8 | 142.0          | 3 #4/0AWG          |
|        | T-300          | 3          | 15 1/8               | 4 3/8 | 4 3/4 | 12 3/8 | 3 3/8 | 173.0          | 3 #4/0AWG          |
|        | T-350          | 3 1/2      | 18 3/8               | 5 1/2 | 5 1/2 | 15     | 4 1/2 | 290.0          | 3 #350MCM          |
|        | T-400          | 4          | 18 3/8               | 5 1/2 | 5 1/2 | 15     | 4 1/2 | 324.0          | 3 #350MCM          |
|        | T-50G          | 1/2        | 5 3/8                | 1 1/8 | 1 1/8 | 4      | 1 1/8 | 4.0            | N/A                |
|        | T-75G          | 3/4        | 6 1/8                | 1 1/8 | 1 1/8 | 4 5/8  | 1 1/8 | 7.0            | 3 #6AWG            |
|        | T-100G         | 1          | 7 1/8                | 1 1/8 | 2     | 5 3/8  | 1 3/4 | 12.0           | 3 #4AWG            |
|        | T-125G         | 1 1/4      | 9 1/8                | 2 3/8 | 2 3/8 | 7 1/4  | 2 1/4 | 32.0           | 3 #2AWG            |
|        | T-150G         | 1 1/2      | 9 1/4                | 2 3/8 | 2 3/4 | 7 1/4  | 2 1/4 | 36.0           | 3 #1AWG            |
|        | T-200G         | 2          | 11 1/8               | 3 1/4 | 3 1/2 | 9 3/8  | 2 3/8 | 70.0           | 3 #2/0AWG          |
|        | T-250G         | 2 1/2      | 15 3/8               | 4 3/8 | 4     | 12 3/8 | 3 3/8 | 142.0          | 3 #4/0AWG          |
|        | T-300G         | 3          | 15 1/8               | 4 3/8 | 4 3/4 | 12 3/8 | 3 3/8 | 173.0          | 3 #4/0AWG          |
|        | T-350G         | 3 1/2      | 18 3/8               | 5 1/2 | 5 1/2 | 15     | 4 1/2 | 290.0          | 3 #350MCM          |
|        | T-400G         | 4          | 18 3/8               | 5 1/2 | 5 1/2 | 15     | 4 1/2 | 324.0          | 3 #350MCM          |

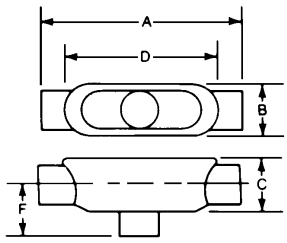
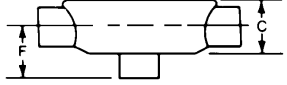
# Spec 5™ Malleable Iron Conduit Bodies

For Rigid Conduit & IMC

**Dimensional Data:**

| Type LL   |            | Dimensions in Inches |       |       |        |       |        |        | Volume Cu. In. | Max No. Conductors |
|---|------------|----------------------|-------|-------|--------|-------|--------|--------|----------------|--------------------|
| Catalog Number  | Trade Size | B                    | C     | D     | G      | H     | J      |        |                |                    |
|  | LL-50      | 1/2                  | 1 1/8 | 1 3/8 | 4      | 1 3/8 | 4      | 4 5/8  | 4.0            | N/A                |
|   | LL-75      | 3/4                  | 1 5/8 | 1 7/8 | 4 5/8  | 1 7/8 | 4 5/8  | 5 1/8  | 7.0            | 3 #6AWG            |
|   | LL-100     | 1                    | 1 7/8 | 2     | 5 1/8  | 1 7/8 | 5 1/8  | 6 1/4  | 12.0           | 3 #4AWG            |
|   | LL-125     | 1 1/4                | 2 1/8 | 2 3/8 | 7 1/4  | 2 3/8 | 6 3/8  | 8 1/4  | 32.0           | 3 #2AWG            |
|   | LL-150     | 1 1/2                | 2 3/8 | 2 7/8 | 7 3/4  | 2 7/8 | 6 7/8  | 8 3/4  | 36.0           | 3 #1AWG            |
|  | LL-200     | 2                    | 3 1/4 | 3 1/2 | 9 5/8  | 2 5/8 | 9      | 10 5/8 | 70.0           | 3 #2/0AWG          |
|   | LL-250     | 2 1/2                | 4 3/8 | 4     | 12 3/8 | 3 3/8 | 11 1/8 | 13 3/4 | 142.0          | 3 #4/0AWG          |
|   | LL-300     | 3                    | 4 7/8 | 4 3/4 | 12 3/8 | 3 3/8 | 11 1/8 | 13 3/4 | 173.0          | 3 #4/0AWG          |
|   | LL-350     | 3 1/2                | 5 5/8 | 5 5/8 | 15     | 4 1/2 | 13 3/8 | 16 3/4 | 292.0          | 3 #350MCM          |
|   | LL-400     | 4                    | 5 7/8 | 5 7/8 | 15     | 4 1/2 | 13 3/8 | 16 3/4 | 324.0          | 3 #350MCM          |

| Type LR   |            | Dimensions in Inches |       |       |        |       |        |        | Volume Cu. In. | Max No. Conductors |
|---|------------|----------------------|-------|-------|--------|-------|--------|--------|----------------|--------------------|
| Catalog Number  | Trade Size | B                    | C     | D     | G      | H     | J      |        |                |                    |
|   | LR-50      | 1/2                  | 1 1/8 | 1 3/8 | 4      | 1 3/8 | 4      | 4 5/8  | 4.0            | N/A                |
|   | LR-75      | 3/4                  | 1 5/8 | 1 7/8 | 4 5/8  | 1 7/8 | 4 5/8  | 5 1/8  | 7.0            | 3 #6AWG            |
|   | LR-100     | 1                    | 1 7/8 | 2     | 5 1/8  | 1 7/8 | 5 1/8  | 6 1/4  | 12.0           | 3 #4AWG            |
|   | LR-125     | 1 1/4                | 2 1/8 | 2 3/8 | 7 1/4  | 2 3/8 | 7      | 8 1/4  | 32.0           | 3 #2AWG            |
|   | LR-150     | 1 1/2                | 2 3/8 | 2 7/8 | 7 3/4  | 2 7/8 | 7      | 8 3/4  | 36.0           | 3 #1AWG            |
|  | LR-200     | 2                    | 3 1/4 | 3 1/2 | 9 5/8  | 2 5/8 | 9      | 10 5/8 | 70.0           | 3 #2/0AWG          |
|   | LR-250     | 2 1/2                | 4 3/8 | 4     | 12 3/8 | 3 3/8 | 11 5/8 | 13 3/4 | 142.0          | 3 #4/0AWG          |
|   | LR-300     | 3                    | 4 7/8 | 4 3/4 | 12 3/8 | 3 3/8 | 11 1/8 | 13 3/4 | 173.0          | 3 #4/0AWG          |
|   | LR-350     | 3 1/2                | 5 5/8 | 5 5/8 | 15     | 4 1/2 | 13 3/8 | 16 3/4 | 292.0          | 3 #350MCM          |
|   | LR-400     | 4                    | 5 7/8 | 5 7/8 | 15     | 4 1/2 | 13 3/8 | 16 3/4 | 324.0          | 3 #350MCM          |

| Type TB   |            | Dimensions in Inches |        |       |       |       |       | Volume Cu. In. | Max No. Conductors |
|---|------------|----------------------|--------|-------|-------|-------|-------|----------------|--------------------|
| Catalog Number  | Trade Size | A                    | B      | C     | D     | F     |       |                |                    |
|  | TB-50      | 1/2                  | 5 5/8  | 1 3/8 | 1 3/8 | 4     | 1 1/2 | 4.0            | N/A                |
|   | TB-75      | 3/4                  | 6 1/4  | 1 1/2 | 1 3/8 | 4 3/8 | 1 1/2 | 7.0            | 3 #6AWG            |
|   | TB-100     | 1                    | 7 1/8  | 1 3/8 | 2     | 5 3/8 | 1 3/8 | 13.0           | 3 #4AWG            |
|   | TB-125     | 1 1/4                | 9 5/8  | 2 3/8 | 2 3/8 | 7 1/4 | 2 1/4 | 32.0           | 3 #2AWG            |
|  | TB-150     | 1 1/2                | 9 3/4  | 2 5/8 | 2 3/4 | 7 1/4 | 2 3/8 | 36.0           | 3 #1AWG            |
|   | TB-200     | 2                    | 11 1/8 | 3 3/8 | 3 1/2 | 9 5/8 | 2 3/4 | 70.0           | 3 #2/0AWG          |

# Spec 5™ Malleable Iron Conduit Bodies

For Rigid Conduit & IMC

**Dimensional Data:**

| Type X            |               | Dimensions in Inches |    |    |    |    |      |           | Volume<br>Cu. In. | Max No.<br>Conductors |
|-------------------|---------------|----------------------|----|----|----|----|------|-----------|-------------------|-----------------------|
| Catalog<br>Number | Trade<br>Size | A                    | B  | C  | D  | E  |      |           |                   |                       |
| X-50              | ½             | 5⅝                   | 1⅝ | 1⅝ | 4  | 2¾ | 4.0  | N/A       |                   |                       |
| X-75              | ¾             | 6⅝                   | 1⅝ | 1⅝ | 4⅝ | 3⅝ | 7.0  | 3 #6AWG   |                   |                       |
| X-100             | 1             | 7⅝                   | 1⅝ | 2  | 5⅝ | 3½ | 12.0 | 3 #4AWG   |                   |                       |
| X-125             | 1¼            | 9⅝                   | 2⅝ | 2⅝ | 7¼ | 4½ | 32.0 | 3 #2AWG   |                   |                       |
| X-150             | 1½            | 9¾                   | 2⅝ | 2⅝ | 7¼ | 4⅝ | 36.0 | 3 #1AWG   |                   |                       |
| X-200             | 2             | 11⅝                  | 3⅝ | 3½ | 9½ | 5¼ | 70.0 | 3 #2/0AWG |                   |                       |



| Type C            |               | Dimensions in Inches |    |    |     |       | Volume<br>Cu. In. | Max No.<br>Conductors |
|-------------------|---------------|----------------------|----|----|-----|-------|-------------------|-----------------------|
| Catalog<br>Number | Trade<br>Size | A                    | B  | C  | D   |       |                   |                       |
| C-50              | ½             | 5⅝                   | 1⅝ | 1⅝ | 4   | 4.0   | N/A               |                       |
| C-75              | ¾             | 6⅝                   | 1⅝ | 1⅝ | 4⅝  | 7.0   | 3 #6AWG           |                       |
| C-100             | 1             | 7⅝                   | 1⅝ | 2  | 5⅝  | 12.0  | 3 #4AWG           |                       |
| C-125             | 1¼            | 9⅝                   | 2⅝ | 2⅝ | 7¼  | 32.0  | 3 #2AWG           |                       |
| C-150             | 1½            | 9¾                   | 2⅝ | 2¾ | 7¼  | 36.0  | 3 #1AWG           |                       |
| C-200             | 2             | 11⅝                  | 3⅝ | 3½ | 9⅝  | 70.0  | 3 #2/0AWG         |                       |
| C-250             | 2½            | 15⅝                  | 4⅝ | 4  | 12⅝ | 153.0 | 3 #4/0AWG         |                       |
| C-300             | 3             | 15⅝                  | 4⅝ | 4¾ | 12⅝ | 181.0 | 3 #4/0AWG         |                       |
| C-350             | 3½            | 18⅝                  | 5½ | 5½ | 15  | 290.0 | 3 #350MCM         |                       |
| C-400             | 4             | 18⅝                  | 5½ | 5⅝ | 15  | 320.0 | 3 #350MCM         |                       |

