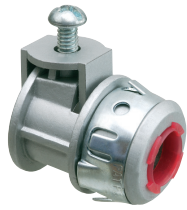
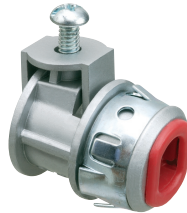


SADDLEGRIP® SNAP-TITE® Connectors

FLEX • AC • MC



SG38AST



SG380AST

For aluminum and steel Flex • AC • AC90 • MCI • MCI-A cable • HCF steel and aluminum cable. Zinc die-cast.

SNAP-TITE® and SNAP2IT® products have been tested and listed by UL in accordance with UL's ground fault requirements. For additional information see page 7.

(See page E-1 for ring removal instructions.)

CATALOG NUMBER	UPC/DCI/NAED MFG #018997	TRADE SIZE	KO SIZE	UNIT PKG	STD PKG	DIM A	DIM B	DIM C	CABLE RANGE	END STOP DIAMETER
SG38AST*‡	80144	3/8	1/2	50	500	1.203	.555	1.077	.405-.612	.400
SG380AST*‡	80148	3/8	1/2	50	500	1.145	.555	1.077	.405-.612	.400 x .580
SG50ST‡	80150	1/2	1/2	50	500	1.458	.510	1.235	.710-.910	.620
SG50AST*‡	17501	1/2	1/2	50	500	1.145	.555	1.277	.710-.910	.620
SG75ST	18080	3/4	3/4	20	200	1.495	.510	1.570	.840-1.110	.820
SG75AST*	17755	3/4	3/4	20	200	1.540	.55	1.570	.840-1.110	.820

*Provided with insulated throat.

‡Also for MCI-A cable. See page E-30 and E-31 for MCI-A cable ranges.

For cables smaller than 0.405" see L16 on page E-13 and L16ST on page E-5.

Refer to chart on page E-28 for a list of cable types.

Concrete tight when taped.

PATENTED.



SG380AST



SG38AST

