

S3-S**Socket for 11-pin standard Relays and Time Cubes****Rated Load****10 A / 250 V****Specifications**

Rated impulse withstand voltage

– All terminals / DIN rail

2.5 kV rms / 1 min

– Terminal / Terminal

2.5 kV rms / 1 min

Cross-section of connecting wire

– Single-wire

4 mm² / AWG 12 or 2 x 2.5 mm² / AWG 14

– Multi-wire

0.34 mm² / AWG 22 - 2.5 mm² / AWG 14

Nominal screw torque

1.2 Nm

Screw dimensions

M3.5 Pozi slot

Mounting

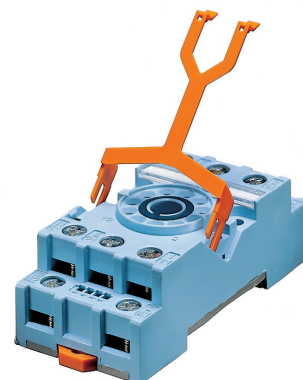
TS-35 or Back Panel Mounting

Ambient temperature operation/storage

-40...60 °C / -40 ... 80 °C (no ice)

Weight

69g

**Included Accessories**

Retaining Clip, plastic

S30-CM for C3 / C3x Relays

Optional Accessories

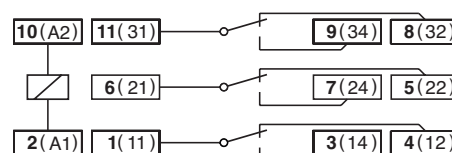
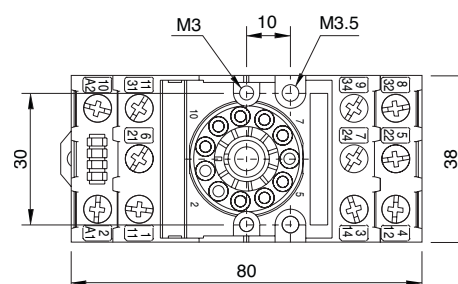
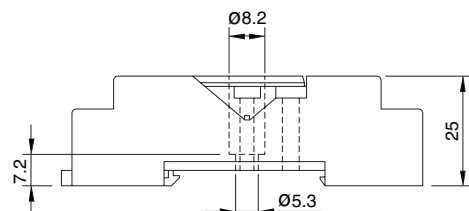
Retaining clip, steel

HF-32 (BAG 10 PCS) for C3 / C3x Relays

HF-33 (BAG 10 PCS) for Time Cube CTx

Coding Ring

S3-BC (BAG 5 PCS) for C3 / C3x Relays

**Connection diagram****Dimensions [mm]****Technical approvals, conformities**

S3-S**Socket for 11-pin standard Relays and Time Cubes****Rated Load****10 A / 250 V****Specifications**

Rated impulse withstand voltage

– All terminals / DIN rail

2.5 kV rms / 1 min

– Terminal / Terminal

2.5 kV rms / 1 min

Cross-section of connecting wire

– Single-wire

4 mm² / AWG 12 or 2 x 2.5 mm² / AWG 14

– Multi-wire

0.34 mm² / AWG 22 - 2.5 mm² / AWG 14

Nominal screw torque

1.2 Nm

Screw dimensions

M3.5 Pozi slot

Mounting

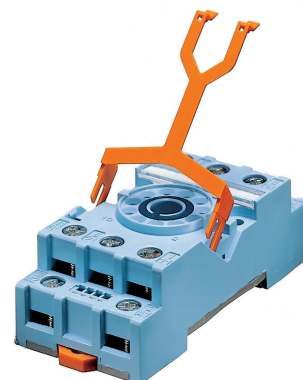
TS-35 or Back Panel Mounting

Ambient temperature operation/storage

-40...60 °C / -40 ... 80 °C (no ice)

Weight

69g

**Included Accessories**

Retaining Clip, plastic

S30-CM for C3 / C3x Relays

Optional Accessories

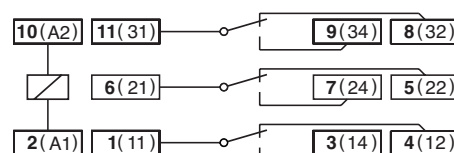
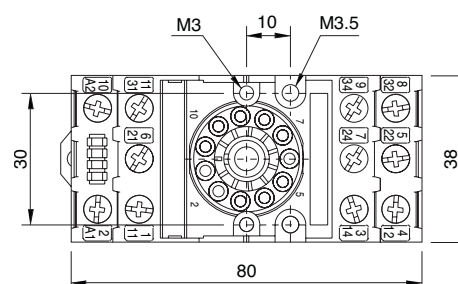
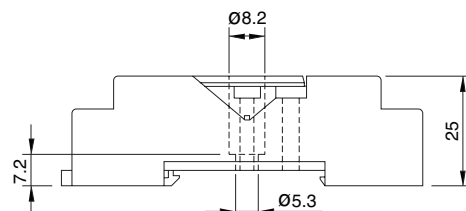
Retaining clip, steel

HF-32 (BAG 10 PCS) for C3 / C3x Relays

HF-33 (BAG 10 PCS) for Time Cube CTx

Coding Ring

S3-BC (BAG 5 PCS) for C3 / C3x Relays

**Connection diagram****Dimensions [mm]****Technical approvals, conformities**