

# DP4300M Thermal Transfer Desktop Printer

The DP4300M Thermal Transfer Desktop Printer produces a variety of labels for electrical and network infrastructure applications. Designed for industrial use, whether in harsh environments, construction sites, data centers, or the factory floor, the DP4300M is dependable and gets the job done.

The 300 dpi print resolution, print speed of up to 5.9 inches per second, and large color touch screen display make the DP4300M ideal for labeling of control panels, electrical equipment, renewable energy installations, industrial facilities, data centers, and enterprise networks.

Easily create self-laminating labels, Turn-Tell™ labels, heat shrink labels, marker plates, and flag labels for wire and cable marking. Quickly print raised panel labels, electrical component labels, network component labels, arc flash labels, and safety signs for equipment and facility identification.



## KEY FEATURES & BENEFITS

<b>Compatible with Panduit thermal transfer labels and ribbons:</b>	Convenient, easy setup; quickly begin producing labels for all industrial infrastructure applications
<b>Efficient label production:</b>	Up to 5.9 inches per second print speed
<b>300 dots per inch (dpi) print resolution:</b>	Superior print quality for all types of labels
<b>Large color touchscreen display:</b>	Easy to use screen with intuitive interface
<b>Quick and easy loading of label and ribbon media:</b>	Minimize setup time to switch label and ribbon rolls, maximize uptime
<b>Easy-Mark Plus™ Labeling Software included with printer</b>	No additional investment for labeling software, print right out of the box
<b>USB, Ethernet, and serial connectivity:</b>	Increased flexibility to quickly connect to any computer
<b>Durable construction:</b>	Allows use in harsh environments, industrial facilities, and job sites
<b>Compact, lightweight design:</b>	Allows use in office and remote locations

## TECHNICAL INFORMATION

<b>Print method</b>	300 dpi thermal transfer
<b>Print speed (maximum)</b>	5.9" (150mm) per second
<b>Maximum print width</b>	4.16" (105.7mm)
<b>Maximum print length</b>	78.74" (2.0m)
<b>Weight</b>	8.8 lbs. (4 kg)
<b>Size (width x height x depth)</b>	9.7" x 7.5" x 12.7" (253mm x 191mm x 322mm)
<b>Connectivity</b>	USB, Ethernet, Serial, Wi-Fi (optional)
<b>Power</b>	100 - 240 VAC, 50/60 Hz
<b>Regulatory Compliance</b>	FCC, cUL, ICES3, CE, UKCA, CB, CCC, KC, BSMI, RCM, ECAS, CoC
<b>Compatibility</b>	Windows 10, 11 <sup>^</sup>

<sup>^</sup>Windows is a registered trademark of Microsoft Corporation in the United States and/or other countries

# DP4300M Thermal Transfer Desktop Printer

## DP4300M DESKTOP PRINTERS

Part Number	Part Description	Std. Pkg. Qty.
DP4300M	300 dpi printer; includes printer, Panduit® Easy-Mark Plus™ Labeling Software, RMEH4BL black hybrid ribbon, USB cable, quick start guide, and U.S. power cord; for use in North America.	1
DP4300M/E	300 dpi printer; includes printer, Panduit® Easy-Mark Plus™ Labeling Software, RMEH4BL black hybrid ribbon, USB cable, quick start guide, and power cords for Euro, Swiss, UK, China, and Australia; for use outside of North America	
DP4300M-KIT	DP4300M printer kit. Includes: printer, Panduit® Easy-Mark Plus™ Labeling Software, RMEH4BL black hybrid ribbon, USB cable, quick start guide, U.S. power cord, TDP43ME-RS Roll Stand, DP4300M-CASE, and one roll of S100X150VATY labels; for use in North America	
DP4300M/E-KIT	DP4300M/E printer kit. Includes: printer, Panduit® Easy-Mark Plus™ Labeling Software, RMEH4BL black hybrid ribbon, USB cable, quick start guide, power cords for Euro, Swiss, UK, China, and Australia, TDP43ME-RS Roll Stand, DP4300M-CASE, and one roll of S100X150VATY labels; for use outside of North America	

## DP4300M THERMAL TRANSFER RIBBONS

Part Number	Part Description	Width		Length		Std. Pkg. Qty.
		In.	mm	ft	m	
RMER1BL	Black resin thermal transfer ribbon.	1.10	27.9	300.0	91.4	1
RMEH4BL*	Black hybrid thermal transfer ribbon. Use with heat shrink labels self-laminating labels, Turn-Tell® labels, tan polyimide labels, and vinyl cloth labels.	4.25	108.0			
RMER4BL*^	Black resin thermal transfer ribbon. Use with polyester labels, continuous vinyl tape, marker plates, and raised panel labels.					
RMER4BL-A	Black resin thermal transfer ribbon. Use with high-temperature marker plates.					
RMER4BL-C	Black resin thermal transfer ribbon. Use with white polyimide labels.					

\*For 2.5" wide ribbons, replace 4 in part number with 2. For example, the part number of a 2.5" wide black hybrid thermal transfer ribbon is RMEH2BL.

^Other colors available, change "BL" to: BU for Blue, RD for Red, or WH for White (Example: RMER4BU = Blue Resin Ribbon).

## DESKTOP PRINTER ACCESSORIES

Part Number	Part Description	Std. Pkg. Qty.
DP4300M-CASE	Hardside carrying case for printer and accessories	1
DP4300M-CUT	Optional power/automatic cutter for DP4300M thermal transfer desktop printer	
DP4300M-PCUT	Optional power/automatic perforation cutter for DP4300M thermal transfer desktop printer	
DP-WIFI	USB WLAN Stick for DP Printers, 802.11b/g/n 2.4GHz + a/n/ac 5GHz	
TDP43ME-RS	External label roll stand for use with continuous tapes	
PTR-CLN	Printer cleaning kit—contains (1) cleaning pen, (8) cleaning solution soaked wipes, (8) foam swabs pre-saturated with cleaning solution	

# DP4300M Thermal Transfer Desktop Printer

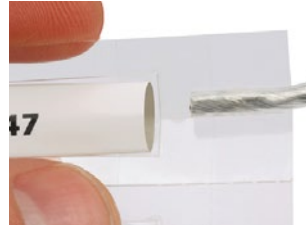
## DESKTOP LABELING APPLICATIONS



Wire and Cable Marking



Turn-Tell® Labels



Heat Shrink Labels



Marker Plates



Flag Labels



Raised Panel Labels



Terminal Block Labeling



Electrical Infrastructure Labeling



Safety Signs



Pipe Marking



Electrical Hazard Labels



Network Infrastructure Labeling

## RELATED PRODUCTS



DP4300H/DP4600H  
High Volume Printers



DP4300HD  
Two-Sided Printer



PXE™ Mobile  
Printers