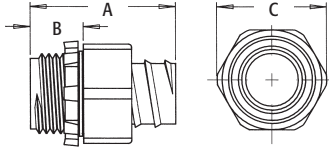
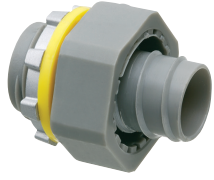


Screw-On Straight Non-Metallic Connectors

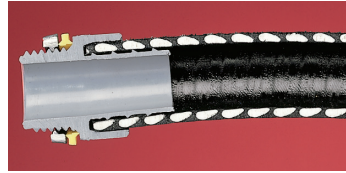


For use with non-metallic liquid-tight conduit, type B only. Produced from UV rated plastic for long outdoor life.

CATALOG NUMBER	UPC/DCI/NAED MFG #018997	TRADE SIZE	KO SIZE	UNIT PKG	STD PKG	DIM A	DIM B	DIM C
NMSC38	21005	3/8	1/2	25	100	1.350	.535	1.250
NMSC50	21000	1/2	1/2	25	100	1.410	.535	1.228
NMSC75	21010	3/4	3/4	25	100	1.546	.546	1.594
NMSC100	14950	1	1	5	25	1.810	.650	1.750

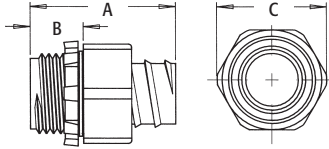
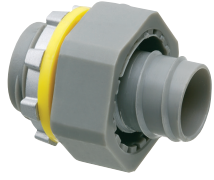
Add suffix "BL" to Catalog # when ordering in black, for example NMSC50BL.

PATENTED.



Conduit threads onto ferrule and up inside the outer body. The inside taper squeezes down on the outside of conduit for a superior liquid-tight seal. The cut portion of the conduit does not show, giving a more attractive finished appearance. Also for use with flexible non-metallic tubing. These connectors screw on easily by hand and are removable with pliers.

Screw-On Straight Non-Metallic Connectors

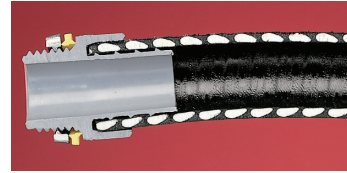


For use with non-metallic liquid-tight conduit, type B only. Produced from UV rated plastic for long outdoor life.

CATALOG NUMBER	UPC/DCI/NAED MFG #018997	TRADE SIZE	KO SIZE	UNIT PKG	STD PKG	DIM A	DIM B	DIM C
NMSC38	21005	3/8	1/2	25	100	1.350	.535	1.250
NMSC50	21000	1/2	1/2	25	100	1.410	.535	1.228
NMSC75	21010	3/4	3/4	25	100	1.546	.546	1.594
NMSC100	14950	1	1	5	25	1.810	.650	1.750

Add suffix "BL" to Catalog # when ordering in black, for example NMSC50BL.

PATENTED.



Conduit threads onto ferrule and up inside the outer body. The inside taper squeezes down on the outside of conduit for a superior liquid-tight seal. The cut portion of the conduit does not show, giving a more attractive finished appearance. Also for use with flexible non-metallic tubing. These connectors screw on easily by hand and are removable with pliers.