

**NEW**

**Lutron energy-saving products**

## Ordering information

### Maestro® dimmer

with occupancy/vacancy sensor or vacancy sensor

- Boxed
- Clamshell

Model number	Control type	Sensor operation	Maximum capacity
■ MS-OP600M-XX ● MS-OP600MH-XX	occupancy/vacancy, single-pole/multi-location	auto-on/auto-off or manual on/auto-off settings	600W incandescent/ halogen, 120V
■ MS-VP600M-XX* ● MS-VP600MH-XX*	vacancy, single-pole/multi-location	manual on/auto-off setting only	600W incandescent/ halogen, 120V
■ MA-R-XX ● MA-RH-XX	companion dimmer	—	use up to 9 companion dimmers with only 1 Maestro multi-location dimmer

### Maestro switch

with occupancy/vacancy sensor or vacancy sensor

Model number	Control type	Sensor operation	Maximum capacity
■ MS-OPS5AM-XX ● MS-OPS5AMH-XX	occupancy/vacancy, single-pole/multi-location	auto-on/auto-off or manual on/auto-off settings	5 A light, 120V requires neutral wire
■ MS-VPS5AM-XX* ● MS-VPS5AMH-XX*	vacancy, single-pole/multi-location	manual on/auto-off setting only	5 A light, 120V requires neutral wire
■ MS-OPS6M-DV-XX	occupancy/vacancy, single-pole/multi-location	auto-on/auto-off or manual on/auto-off settings	6 A light, 120V/277V inc/halogen, MLV, ELV, non-dim fluorescent ballasts
■ MS-VPS6M-DV-XX	vacancy, single-pole/multi-location	manual on/auto-off setting only	6 A light, 120V/277V inc/halogen, MLV, ELV, non-dim fluorescent ballasts
■ MA-AS-XX ● MA-ASH-XX	companion switch	—	use up to 9 companion switches with only 1 Maestro multi-location switch

\* Vacancy models meet California Title 24 section 119(j) requirements

**www.lutron.com**

World Headquarters 1.610.282.3800  
 Technical Support Center 1.800.523.9466 (Available 24/7)  
 Customer Service 1.888.LUTRON1



**NEW Maestro occupancy/vacancy sensor with dimmer (actual size)**



**NEW Maestro occupancy/vacancy sensor with switch (actual size)**

# Maestro®

occupancy/vacancy sensor



# What is a Maestro® occupancy/vacancy sensor?

Maestro dimmers and switches with integrated occupancy/vacancy sensors combine the elegance and technological sophistication of Maestro controls with the energy savings and superior performance of an occupancy/vacancy sensor powered by Lutron exclusive XCT™ technology.

### Saves energy

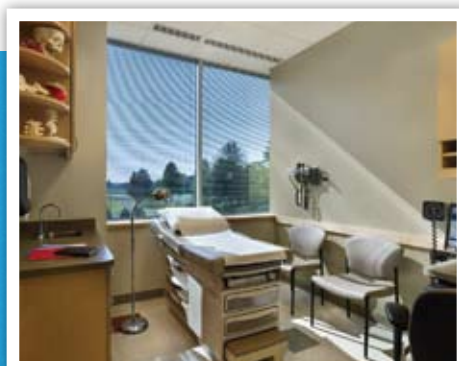
- Sensor automatically turns lights off when room is unoccupied
- Use manual or preset dimming control to reduce the energy used by the lights (dimmer only)
- Easily set-up occupancy/vacancy sensor to require manual-on operation
- Ambient light detection feature prevents the lights from turning on automatically if there is enough ambient light already in the space (120/277V occupancy/vacancy version only)
- Occupancy/vacancy sensors typically save 15% of lighting energy in a space

### Enhances convenience, ambience and décor

- Precise light level control with a dimmer allows you to provide the right light for any activity
- Sleek, unobtrusive occupancy sensor saves energy without sacrificing style
- Available in 27 colors and finishes

### Delivers superior performance

- Exclusive Lutron XCT technology in occupancy/vacancy sensors detects fine motions of room occupants
- Lights automatically turn on to the level at which they were last used when the occupancy sensor activates the lights



## The technology

XCT™ technology makes Maestro® controls with occupancy/vacancy sensor the best choice for reliable performance.

### XCT technology

XCT, exclusively from Lutron, is a new occupancy-sensing technology with a refined sensitivity to detect subtle movements in a space. By detecting fine motions, like typing or reading, XCT ensures lights operate when the space is occupied.



### Available colors\*

#### Gloss colors:

- |  |                                     |
|--|-------------------------------------|
| <input type="checkbox"/> white (WH)        | <input type="checkbox"/> gray (GR)  |
| <input type="checkbox"/> ivory (IV)        | <input type="checkbox"/> brown (BR) |
| <input type="checkbox"/> almond (AL)       | <input type="checkbox"/> black (BL) |
| <input type="checkbox"/> light almond (LA) |                                     |

#### Satin Colors®:

- |   |  |
|---|--|
| <input type="checkbox"/> hot (HT)       | <input type="checkbox"/> midnight (MN)     |
| <input type="checkbox"/> merlot (MR)    | <input type="checkbox"/> sienna (SI)       |
| <input type="checkbox"/> plum (PL)      | <input type="checkbox"/> terracotta (TC)   |
| <input type="checkbox"/> turquoise (TQ) | <input type="checkbox"/> greenbriar (GB)   |
| <input type="checkbox"/> sea glass (SG) | <input type="checkbox"/> bluestone (BG)    |
| <input type="checkbox"/> taupe (TP)     | <input type="checkbox"/> mocha stone (MS)  |
| <input type="checkbox"/> eggshell (ES)  | <input type="checkbox"/> goldstone (GS)    |
| <input type="checkbox"/> biscuit (BI)   | <input type="checkbox"/> desert stone (DS) |
| <input type="checkbox"/> snow (SW)      | <input type="checkbox"/> stone (ST)        |
| <input type="checkbox"/> palladium (PD) | <input type="checkbox"/> limestone (LS)    |

\* Lens color is white for all product colors.

### Specifications

- 180° sensor field of view
- up to 30' x 30' (900 ft²) detection area
- 1-, 5-, 15-, or 30-minute time-out options
- fits into standard wallbox