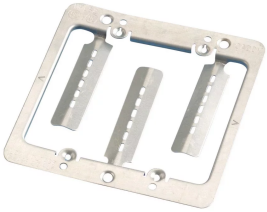




LOW VOLTAGE MOUNTING PLATE WITH SCREWS, 2 GANG

CATALOG NUMBER

MPLS2



CERTIFICATIONS



FEATURES

Provides positive support with locking screws

Makes wire "fishing" easier

Install with a drywall saw and screwdriver

Eliminates the need for an electrical box when installing low voltage Class 2 wiring

PRODUCT ATTRIBUTES

Material: Steel

Finish: Plain

Gang: 2

Drywall Thickness: 1/2" - 1 1/4"

Height (H): 4 1/4"

Width (W): 4 1/4"

A: 2 3/8"

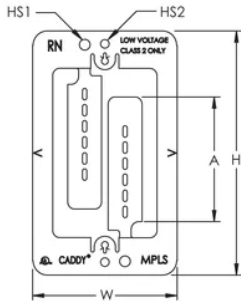
Hole Size 1 (HS1): 0.19"

Hole Size 2 (HS2): 0.15"

ADDITIONAL PRODUCT DETAILS

For low voltage Class 2 use only.

DIAGRAMS



WARNING

nVent products shall be installed and used only as indicated in nVent's product instruction sheets and training materials. Instruction sheets are available at www.nvent.com and from your nVent customer service representative. Improper installation, misuse, misapplication or other failure to completely follow nVent's instructions and warnings may cause product malfunction, property damage, serious bodily injury and death and/or void your warranty.

North America

+1.800.753.9221

Option 1 – Customer Care

Option 2 – Technical Support

Europe

Netherlands:

+31 800-0200135

France:

+33 800 901 793

Europe

Germany:

800 1890272

Other Countries:

+31 13 5835404

APAC

Shanghai:

+ 86 21 2412 1618/19

Sydney:

+61 2 9751 8500



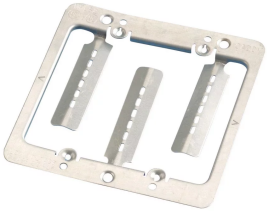
Our powerful portfolio of brands:
nVent.com **CADDY ERICO HOFFMAN RAYCHEM SCHROFF**
TRACER



LOW VOLTAGE MOUNTING PLATE WITH SCREWS, 2 GANG

CATALOG NUMBER

MPLS2



CERTIFICATIONS



FEATURES

Provides positive support with locking screws

Makes wire "fishing" easier

Install with a drywall saw and screwdriver

Eliminates the need for an electrical box when installing low voltage Class 2 wiring

PRODUCT ATTRIBUTES

Material: Steel

Finish: Plain

Gang: 2

Drywall Thickness: 1/2" - 1 1/4"

Height (H): 4 1/4"

Width (W): 4 1/4"

A: 2 3/8"

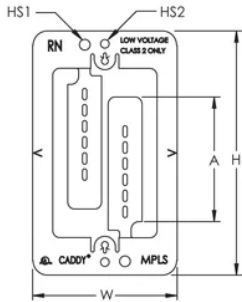
Hole Size 1 (HS1): 0.19"

Hole Size 2 (HS2): 0.15"

ADDITIONAL PRODUCT DETAILS

For low voltage Class 2 use only.

DIAGRAMS



WARNING

nVent products shall be installed and used only as indicated in nVent's product instruction sheets and training materials. Instruction sheets are available at www.nvent.com and from your nVent customer service representative. Improper installation, misuse, misapplication or other failure to completely follow nVent's instructions and warnings may cause product malfunction, property damage, serious bodily injury and death and/or void your warranty.

North America

+1.800.753.9221

Option 1 – Customer Care

Option 2 – Technical Support

Europe

Netherlands:

+31 800-0200135

France:

+33 800 901 793

Europe

Germany:

800 1890272

Other Countries:

+31 13 5835404

APAC

Shanghai:

+ 86 21 2412 1618/19

Sydney:

+61 2 9751 8500



Our powerful portfolio of brands:
nVent.com **CADDY ERICO HOFFMAN RAYCHEM SCHROFF**
TRACER