

FEATURES & SPECIFICATIONS

INTENDED USE — The IBZ fluorescent high bay is ideal for new construction and renovation projects. It is a one-for-one replacement of common metal halide high bay systems. The unique Cool Running Plus™ technology provides industry-leading, trouble-free operation in ambient temperatures up to 155°F (68°C). Applications include manufacturing, warehousing, commercial and industrial facilities. The IBZ fixture performs well at mounting heights from 15'-40'. **Certain airborne contaminants can diminish the integrity of acrylic and/or polycarbonate.** [Click here for Acrylic-Polycarbonate Compatibility table for suitable uses.](#)

CONSTRUCTION — The highly configurable design of the IBZ high bay allows for a multitude of fixture options that can either be factory- or field-installed. The easy-access ballast channel houses the proprietary Cool Running Plus technology, which is the most advanced fluorescent ballast technology available for fluorescent high bay lighting. It has independent lamp operation to reduce lamp maintenance costs, is fast-starting to improve occupancy sensing, and a proprietary thermal-sensing processor that allows for reliable operation in environments where ambient temperatures can reach up to 155°F (68°C).

In addition to the reliable operation of IBZ fixtures, the reflectors tightly control the distribution of light and effectively manage lamp heat to increase the overall efficiency. The result is superior optics in either narrow distribution for aisles, or wide distribution for general lighting. Installation is made quick and easy with IBZ hanging accessories such as the aircraft cable and single-point mounting bracket. IBZ fixtures can be factory-wired to have both sensors and cord sets, further reducing installation time. The configurability, performance and ease of installation make IBZ fixtures the preferred choice for fluorescent high bay lighting.

Channel is formed of heavy-duty code-gauge (22-gauge) steel to stand up to the most demanding elements. Lamp holder assembly protects from incidental damage or movement of sockets during handling and installation. Lamp holders (sockets) are manufactured from PBT (polybutylene terephthalate) material for increased chemical resistance along with secure positioning rotating collars and enclosed contacts. Access plate on the back of the channel housing allows quick and easy wiring.

Finish: Channel is high-gloss white baked enamel; five-stage iron phosphate pretreatment ensures superior paint adhesion and rust resistance.

OPTICS — Two optical systems are available. Narrow distribution is ideal for narrow or aisle lighting applications and features precision-formed segmented optics utilizing specular aluminum reflector. Provides 95% reflectivity and warranted for 25 years. Wide distribution includes high-reflectance white finish for general or open areas.

ELECTRICAL — Thermally protected, resetting, Class P, HPF, A sound-rated electronic ballast. AWM TFM or THHN wire used throughout rated for required temperatures. Ballast disconnect (BDP) is standard unless EL14 or cord set is requested.

INSTALLATION — Suitable for suspension by chain, cable, surface-mounting bracket, hook monopoint or single (pendant) monopoint. Surface mounting not recommended without optional surface mounting bracket. To maintain high ambient listing, fixture should be mounted at a minimum plenum height of 8".

LISTINGS — CSA Certified to U.S. and Canadian safety standards (UL1598 and CSA 250.0-08) for 55°C and 40°C lensed. Suitable for damp locations.

WARRANTY — 1-year limited warranty. Complete warranty terms located at www.acuitybrands.com/CustomerResources/Terms_and_conditions.aspx

Note: Actual performance may differ as a result of end-user environment and application. Specifications subject to change without notice.

Catalog Number
Notes
Type



Fluorescent High Bay

IBZ

4-, 6- or 8-lamp T5HO

Patent Pending

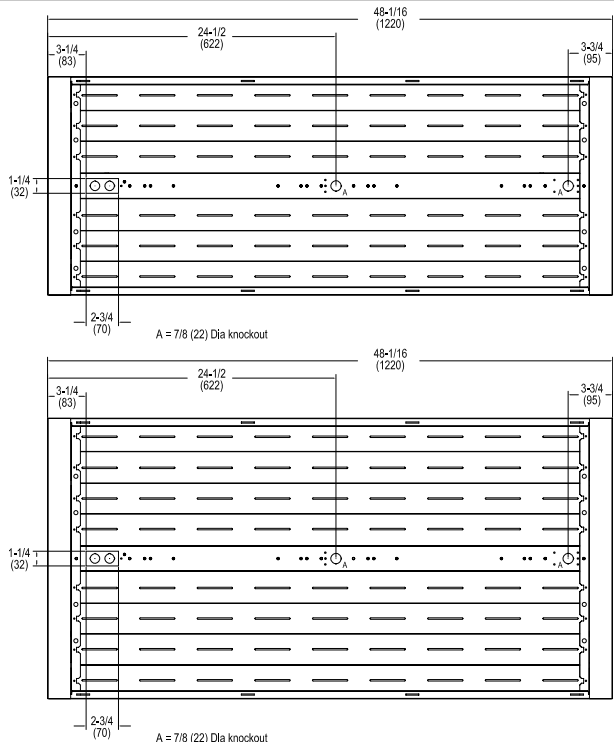
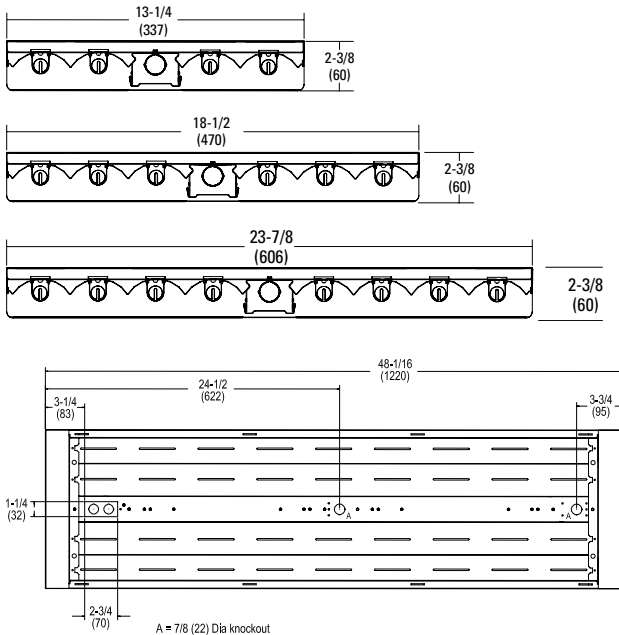


SPECIFICATIONS				
	Length	Width	Depth	Weight
4-lamp	48-1/16 (1221)	13-1/4 (337)	2-3/8 (60)	16 lbs. (7.3 kg)
6-lamp	48-1/16 (1221)	18-1/8 (460)	2-3/8 (60)	20 lbs (9.1 kg)
8-lamp	48-1/16 (1221)	23-7/8 (606)	2-3/8 (60)	25 lbs. (11.3 kg)

All dimensions are inches (millimeters) unless otherwise specified and may vary with options or accessories.

DIMENSIONS

Dimensions may vary with options or accessories.



IBZ Fluorescent High Bay, T5H0

Example: IBZ 454L

ORDERING INFORMATION

Lead times will vary depending on options selected. Consult with your sales representative.

IBZ Series	Lamp type	Distribution	Shielding ²	Voltage	Ballast configuration	Ballast ⁶	
IBZ <i>For tandem double-length unit, add prefix "T". Ex: TIBZ</i>	Lamps installed¹	(blank) Narrow distribution, ≤5% uplight	(blank) No shielding	(blank) MVOLT; 120-277V	(blank) Standard configuration	ACRP Cool Running Plus T5 electronic, 1.0 BF, programmed rapid start ⁷	
	454L 4-lamp 54W T5H0	NDU Narrow distribution, enhanced uplight, ≤13% uplight	A12125 Pattern 12 acrylic, 0.125" ^{11, 3,4}	HVOLT 347V-480V ⁵	4-lamp = (1) 4-lamp ballast 6-lamp = (1) 2-lamp and (1) 4-lamp ballast 8-lamp = (2) 4-lamp ballasts	GEB10PS90 T5 electronic, 1.0 BF, programmed rapid start	
	654L 6-lamp 54W T5H0		ACL Clear acrylic, 0.125" ^{11, 3,4}				
	854L 8-lamp 54W T5H0		PCL125 Clear polycarbonate, 0.125" ^{11, 3,4}				
	Unlamped	WD Wide distribution, ≤5% uplight	NLWG No lens; wireguard in door frame ³				
	454 4-lamp 54W T5H0						
	654 6-lamp 54W T5H0						
854 8-lamp 54W T5H0	WDU Wide distribution, enhanced uplight, ≤13% uplight						

Lamp color	Options
(blank) F54T5H0/841	GLR Internal fast-blow fuse ^{9, 10}
LP835 F54T5H0/835	GMF Internal slow-blow fuse ^{9, 10}
LP850 F54T5H0/850	EL14 Emergency battery pack ^{9, 11, 12}
Amalgam lamps⁸	EL14SD Emergency battery pack w/ self-diagnostics ^{9, 11, 12}
LP841A F54T5H0/841	I162 1250 lumens per lamp battery ^{11, 12, 13}
LP835A F54T5H0/835	OUTCTR Wiring leads pulled through back center of fixture ³
LP850A F54T5H0/850	OCS RELOC [®] OnePass [®] 5' installed ⁹
Energy-saving 49W lamps	IMP Integrated modular plug ¹⁴
P841E49 F54T5H0/841	FSP Integral full side panels
P835E49 F54T5H0/835	HBBSIC Chain hanger (pair)
P850E49 F54T5H0/850	HBBS36IC Chain hanger with 36" chain (pair)
	Cord sets:
	CS1W Straight plug, 120V ^{15, 16}
	CS3W Twist-lock, 120V ^{15, 16}
	CS7W Straight plug, 277V ^{15, 16}
	CS11W Twist-lock, 277V ^{15, 16}
	CS25W Twist-lock, 347V ^{15, 16}
	CS97W Twist-lock, 480V ^{15, 16}
	CS93W 600 SO white cord, no plug (no voltage required) ^{15, 16}
	Wireguards:
	WGX External wireguard installed
	2WGX External wireguard installed on bottom of fixture ¹⁷
	Motion sensors:
	LCOZU Aisle motion sensor, pre-wired ^{18, 19}
	LCHOSZU Aisle motion sensor, pre-wired; programmable dimming ^{18, 19}
	LCPZU Aisle motion sensor with photocell; pre-wired ^{18, 19}
	LAOZU 360° motion sensor, pre-wired ^{18, 19}
	LAHOSZU 360° motion sensor, pre-wired; programmable dimming (only available with programmable dimming ballasts) ^{18, 19}
	LAPZU 360° motion sensor with photocell, pre-wired ^{17, 18}
	MSE360 360° motion sensor, embedded, high bay ^{18, 19}
	MSE360LB 360° motion sensor, embedded, low bay ^{18, 19}
	nPP16D nLight switching/dimming module ²⁰
	nMSI nLight, aisle motion sensor, pre-wired ²¹
	nMSI360 nLight, 360° motion sensor, pre-wired ²²

Accessories: Order as separate catalog number.			
Mounting:		Field-installable door and lens assemblies: ^{24, 25}	Cord sets and sensors for IMP option:
IBAC120 M20 Aircraft cable 10' with hook (one pair)	DLIBZ14 A12125 4-lamp pattern 12 acrylic lens, 0.125" ^{24, 25}	CS1WIMP Straight plug, 120V ^{9, 15, 16}	WGIBZ14 Standard 4-lamp wireguard
IBAC240 M20 Aircraft cable 20' with hook (one pair)	DLIBZ14 ACL 4-lamp clear acrylic lens ^{24, 25}	CS3WIMP Twist-lock, 120V ^{9, 15, 16}	WGIBZ19 Standard 6-lamp wireguard
IBHMP Hook monopoint	DLIBZ14 PCL125 4-lamp clear polycarbonate lens, 0.125" ^{24, 25}	CS7WIMP Straight plug, 277V ^{9, 15, 16}	WGIBZ24 Standard 8-lamp wireguard
IBZACVH Aircraft 10' V hanger (one pair)	DLIBZ19 A12125 6-lamp pattern 12 acrylic lens, 0.125" ^{24, 25}	CS11WIMP Twist-lock, 277V ^{9, 15, 16}	
IBZTFC Tandem coupler and side panel	DLIBZ19 ACL 6-lamp clear acrylic lens ^{24, 25}	CS25WIMP Twist-lock 347V	
IBZPMP Pendant monopoint splice box, includes side covers ²³	DLIBZ19 PCL125 6-lamp clear polycarbonate lens, 0.125" ^{24, 25}	CS93WIMP 600V SO white cord, no plug (no voltage required) ¹⁵	
IBZPMPHB Pendant monopoint splice box, includes side covers (3/4" hub) ²³	DLIBZ24 ACL 8-lamp clear acrylic lens ^{24, 25}	CS97WIMP Twist-lock 480V	
HBBS36 Chain hanger, 36" (one pair)	DLIBZ24 PCL125 8-lamp clear polycarbonate lens, 0.125" ^{24, 25}	MSIIMP Aisle sensor ^{9, 26}	
IBZSMB Surface-mounting bracket (one pair)		MSI360IMP 360° sensor ^{9, 26}	

Notes

- Lamps installed are F54T5H0/841 unless otherwise specified
- 5/55°F warranty with open fixtures only.
- Not available with MSE360 option.
- For wireguard in door frame, add "WG" to shielding. Ex: A12125WG
- Nonstandard configurations may require factory installed BACKPACK™. Consult factory.
- Certain ballast may require a BACKPACK™ installed by the factory in order to accommodate the size of the battery. The BACKPACK™ is NOT field installable. May only be surface mounted using IBZSMB. Not available with pendant mount using IBZPMP or IBZPMPHB. Not available with IMP.
- Not available with HVOLT.
- Not for use with motion sensors.
- Specify voltage. Consult factory for Canadian applications.
- Not available with 347 voltage

- Battery options require a BACKPACK™ installed by the factory in order to accommodate the size of the battery. The BACKPACK is NOT field installable. May only be surface mounted using IBZSMB. Not available with pendant mount using IBZPMP or IBZ PMPHB. Not available with IMP.
- Certified to UL1598 (approx. 1100 lumens at 25°C when using 49W lamps, and 911 lumens at 45°C), Single-lamp operation only. 120 or 277 voltage only.
- Max 2500 lumens when used with 54W T5 lamps up to 55°C ambient temperature (120 or 277 voltage only).
- Must be factory-installed. Not available on TIBZ 16-lamp configurations. Must have "IMP" power cord to power fixture.
- All cord sets are 18/3, 6' white.
- Cord sets are voltage specific. Specify voltage. Other configurations available. Consult factory.
- One wireguard shipped as separate line item for top installation in field. Not available with IBZPMP.

- Specify voltage
- Other configurations available, see page four for additional options
- nPP16D options utilizes nPP16 and a nIO D KO device, CAT5e connector cable also included. Available 120 or 277V only.
- nMSI option utilizes nPP16 and a nCMB 50, CAT5e cable also include. Available 120 or 277V only.
- nMSI360 option utilizes a nPP16 and a nCMB 6, CAT5e cable also included. Available 120 or 277V only.
- When ordering IBZPMP, two-ballasts configurations are recommended. Ex: 2/2. Not available with tandem units.
- Not available with any battery pack.
- Not available with MSE360 or MSE360LB.
- Must have "IMP" power cord to power fixture.

LSXR - Fixture Mount Sensor (see www.sensorswitch.com for additional information)

- Four interchangeable lenses.
- Integrated mounting bracket drops lens down 3" from chase nipple.
- Single or dual relay versions — designed with robust protection from the harsh switching requirements of T5 and LED loads.
- Photocell and 0-10VDC dimming options.
- No PIR field calibration or sensitivity adjustments required.



LSXR configuration	Comparable CMRB sensor	Old style sensor nomenclature
For shortest lead times use one of the following LSXR configurations		
LCOZU	CMRB 50	MSI
LCHOSZU	CMRB 50 D	MSID
LCPZU	CMRB 50 P	MSIPED
LAOZU	CMRB 6	MSI360
LAHOSZU	CMRB 6 D	MSI360D
LAPZU	CMRB 6 P	MSI360PED

SELECTIONS BELOW WILL EXTEND ORDER LEAD TIME. CONSULT YOUR SALES REPRESENTATIVE FOR DETAILS.

SINGLE RELAY

ORDERING INFORMATION

Lead times will vary depending on options selected. Consult with your sales representative.

Example: LAHOSZU

Series	Lens option	Dimming/Photocell	Max. dim Level	Min. dim level	Temp/Humidity	Default time delay
L LSXR passive infrared indoor occupancy sensor	A High mount, 360°	0 None ¹	0 10 VDC	5 Minimum dimming level of ballast	Z None	I 30 seconds
	B Low mount, 360°	H High/low occupancy operation	9 9 VDC	1 1 VDC	T Low temperature	D 2.5 minutes
	C High mount aisleway	P Switching photocell(on/off)	8 8 VDC	2 2 VDC		X 5 minutes
		M Dimming and switching photocell	7 7 VDC	3 3 VDC		R 7.5 minutes
		G Dimming and switching photocell with high/low occupancy operation		4 4 VDC		U 10 minutes (with minimum 15 minutes on time)
				5 5 VDC		V 15 minutes
				6 6 VDC		W 20 minutes
						Y 30 minutes

DUAL RELAY (Available with 120, 277, and 347V only)

ORDERING INFORMATION

Lead times will vary depending on options selected. Consult with your sales representative.

Example: LA2KZU

Series	Lens option	Poles	Operating mode	Temp/Humidity	Default time delay
L LSXR passive infrared indoor occupancy sensor	A High mount, 360°	2 Dual relay	J None	Z None	I 30 seconds
	B Low mount, 360°		K Alternating off relays (promotes even lamp wear)	T Low temperature	D 2.5 minutes
	C High mount aisleway		O Alternating off relays w/photocell		X 5 minutes
			P Switching photocell(on/off)		R 7.5 minutes
			E Photocell on/off (pole 1 only)		U 10 minutes (with minimum 15 minutes on time)
			F Photocell on/off - both poles (dual set-point)		V 15 minutes
					W 20 minutes
					Y 30 minutes

Example: LENS 50 J100

Replacement lenses: Order as separate catalog number.		
Series	Lens type	Package quantity
Lens	6 High mount 360°	U Unit
	10 Low mount 360°	J10 10-pack
	50 High mount aisleway	J100 100-pack

Notes

- 1 Dimming level fields not required when this option is chosen.

OPTIONS AND ACCESSORIES

The I-BEAM fixture offers numerous options for almost every electrical and optical component, including a long list of field-installable accessories.



INTEGRATED MODULAR PLUG (IMP)

Must be factory-installed and allows for field installation of various modular accessories including cordsets, motion sensors, photocells and LC&D XPoint™ relays. Requires IMP cordset for operation.

Order as:
IMP



IBZ BACKPACK™

Electrical box must be factory-installed to house additional components such as emergency ballasts, step-down transformers and dimming ballasts. Extended brackets allow air flow for increased heat management of all components.

Factory-installed.

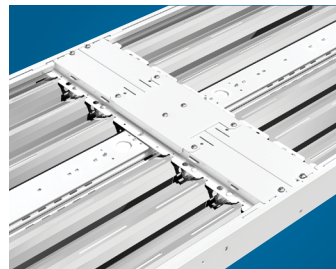


V-SHAPED WIRE GUARD (external)

Flex on impact to absorb shock, reducing damage to the fixture assemblies. Wire guards can be mounted on top and bottom of fixtures to provide full protection.

Factory-installed option:
WGX
2WGX

Field-installed option:
WGIBZ14
WGIBZ19
WGIBZ24



TANDEM CAPABILITY

Supports applications requiring high luminance and high mounting heights. The 8' tandem option is factory-assembled with continuous steel side panels and tensioning couplers. Tandem kits are also available for field installation.

Factory-installed option:
TIBZ

Field-installed option:
IBZTFC



PENDANT MONOPOINT BRACKET

Accepts 3/4" rigid conduit for single-point mounting. The bracket can be adjusted to help counterbalance fixture to off set weight variance from end to end.

Order as:
IBZPMP
IBZPMPHB

FEATURES & SPECIFICATIONS

INTENDED USE — The IBZ fluorescent high bay is ideal for new construction and renovation projects. It is a one-for-one replacement of common metal halide high bay systems. The unique Cool Running Plus™ technology provides industry-leading, trouble-free operation in ambient temperatures up to 155°F (68°C). Applications include manufacturing, warehousing, commercial and industrial facilities. The IBZ fixture performs well at mounting heights from 15'-40'. **Certain airborne contaminants can diminish the integrity of acrylic and/or polycarbonate.** [Click here for Acrylic-Polycarbonate Compatibility table for suitable uses.](#)

CONSTRUCTION — The highly configurable design of the IBZ high bay allows for a multitude of fixture options that can either be factory- or field-installed. The easy-access ballast channel houses the proprietary Cool Running Plus technology, which is the most advanced fluorescent ballast technology available for fluorescent high bay lighting. It has independent lamp operation to reduce lamp maintenance costs, is fast-starting to improve occupancy sensing, and a proprietary thermal-sensing processor that allows for reliable operation in environments where ambient temperatures can reach up to 155°F (68°C).

In addition to the reliable operation of IBZ fixtures, the reflectors tightly control the distribution of light and effectively manage lamp heat to increase the overall efficiency. The result is superior optics in either narrow distribution for aisles, or wide distribution for general lighting. Installation is made quick and easy with IBZ hanging accessories such as the aircraft cable and single-point mounting bracket. IBZ fixtures can be factory-wired to have both sensors and cord sets, further reducing installation time. The configurability, performance and ease of installation make IBZ fixtures the preferred choice for fluorescent high bay lighting.

Channel is formed of heavy-duty code-gauge (22-gauge) steel to stand up to the most demanding elements. Lamp holder assembly protects from incidental damage or movement of sockets during handling and installation. Lamp holders (sockets) are manufactured from PBT (polybutylene terephthalate) material for increased chemical resistance along with secure positioning rotating collars and enclosed contacts. Access plate on the back of the channel housing allows quick and easy wiring.

Finish: Channel is high-gloss white baked enamel; five-stage iron phosphate pretreatment ensures superior paint adhesion and rust resistance.

OPTICS — Two optical systems are available. Narrow distribution is ideal for narrow or aisle lighting applications and features precision-formed segmented optics utilizing specular aluminum reflector. Provides 95% reflectivity and warranted for 25 years. Wide distribution includes high-reflectance white finish for general or open areas.

ELECTRICAL — Thermally protected, resetting, Class P, HPF, A sound-rated electronic ballast. AWM TFM or THHN wire used throughout rated for required temperatures. Ballast disconnect (BDP) is standard unless EL14 or cord set is requested.

INSTALLATION — Suitable for suspension by chain, cable, surface-mounting bracket, hook monopoint or single (pendant) monopoint. Surface mounting not recommended without optional surface mounting bracket. To maintain high ambient listing, fixture should be mounted at a minimum plenum height of 8".

LISTINGS — CSA Certified to U.S. and Canadian safety standards (UL1598 and CSA 250.0-08) for 55°C and 40°C lensed. Suitable for damp locations.

WARRANTY — 1-year limited warranty. Complete warranty terms located at www.acuitybrands.com/CustomerResources/Terms_and_conditions.aspx

Note: Actual performance may differ as a result of end-user environment and application. Specifications subject to change without notice.

Catalog Number
Notes
Type



Fluorescent High Bay

IBZ

4-, 6- or 8-lamp T5HO

Patent Pending

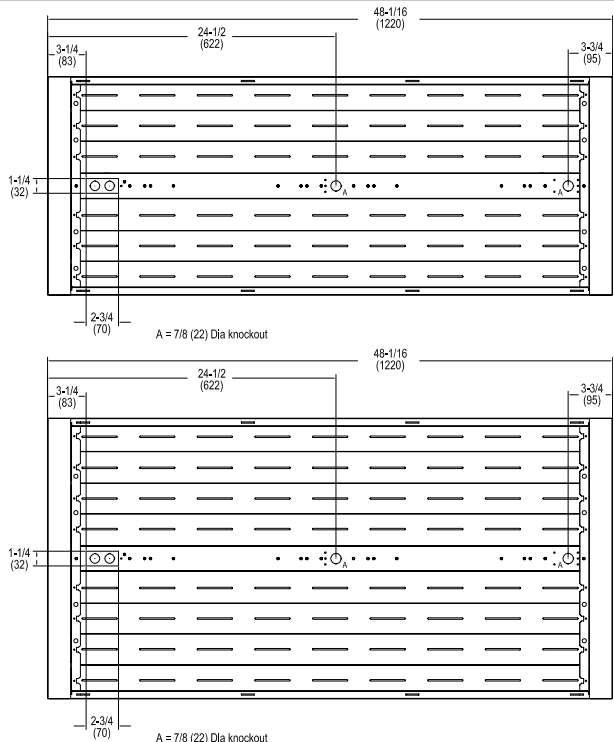
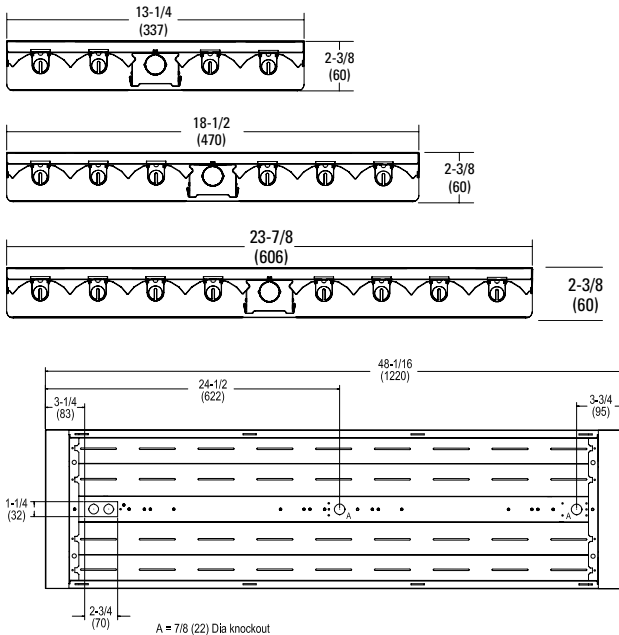


SPECIFICATIONS				
	Length	Width	Depth	Weight
4-lamp	48-1/16 (1221)	13-1/4 (337)	2-3/8 (60)	16 lbs. (7.3 kg)
6-lamp	48-1/16 (1221)	18-1/8 (460)	2-3/8 (60)	20 lbs (9.1 kg)
8-lamp	48-1/16 (1221)	23-7/8 (606)	2-3/8 (60)	25 lbs. (11.3 kg)

All dimensions are inches (millimeters) unless otherwise specified and may vary with options or accessories.

DIMENSIONS

Dimensions may vary with options or accessories.



IBZ Fluorescent High Bay, T5H0

Example: IBZ 454L

ORDERING INFORMATION

Lead times will vary depending on options selected. Consult with your sales representative.

IBZ Series	Lamp type	Distribution	Shielding ²	Voltage	Ballast configuration	Ballast ⁶
IBZ <i>For tandem double-length unit, add prefix "T". Ex: TIBZ</i>	Lamps installed¹	(blank) Narrow distribution, ≤5% uplight	(blank) No shielding	(blank) MVOLT; 120-277V	(blank) Standard configuration	ACRP Cool Running Plus T5 electronic, 1.0 BF, programmed rapid start ⁷
	454L 4-lamp 54W T5H0	NDU Narrow distribution, enhanced uplight, ≤13% uplight	A12125 Pattern 12 acrylic, 0.125" ^{11, 3,4}	HVOLT 347V-480V ⁵	4-lamp = (1) 4-lamp ballast	GEB10PS90 T5 electronic, 1.0 BF, programmed rapid start
	654L 6-lamp 54W T5H0		ACL Clear acrylic, 0.125" ^{11, 3,4}			
	854L 8-lamp 54W T5H0		PCL125 Clear polycarbonate, 0.125" ^{11, 3,4}			
	Unlamped	WD Wide distribution, ≤5% uplight	NLWG No lens; wireguard in door frame ³		8-lamp = (2) 4-lamp ballasts	
	454 4-lamp 54W T5H0	WDU Wide distribution, enhanced uplight, ≤13% uplight				
	654 6-lamp 54W T5H0					
854 8-lamp 54W T5H0						

Lamp color	Options
(blank) F54T5H0/841	GLR Internal fast-blow fuse ^{9, 10}
LP835 F54T5H0/835	GMF Internal slow-blow fuse ^{9, 10}
LP850 F54T5H0/850	EL14 Emergency battery pack ^{9, 11, 12}
Amalgam lamps⁸	EL14SD Emergency battery pack w/ self-diagnostics ^{9, 11, 12}
LP841A F54T5H0/841	I162 1250 lumens per lamp battery ^{11, 12, 13}
LP835A F54T5H0/835	OUTCTR Wiring leads pulled through back center of fixture ³
LP850A F54T5H0/850	OCS RELOC [®] OnePass [®] 5' installed ⁹
Energy-saving 49W lamps	IMP Integrated modular plug ¹⁴
P841E49 F54T5H0/841	FSP Integral full side panels
P835E49 F54T5H0/835	HBBSIC Chain hanger (pair)
P850E49 F54T5H0/850	HBBS36IC Chain hanger with 36" chain (pair)
	Cord sets:
	CS1W Straight plug, 120V ^{15, 16}
	CS3W Twist-lock, 120V ^{15, 16}
	CS7W Straight plug, 277V ^{15, 16}
	CS11W Twist-lock, 277V ^{15, 16}
	CS25W Twist-lock, 347V ^{15, 16}
	CS97W Twist-lock, 480V ^{15, 16}
	CS93W 600 SO white cord, no plug (no voltage required) ^{15, 16}
	Wireguards:
	WGX External wireguard installed
	2WGX External wireguard installed on bottom of fixture ¹⁷
	Motion sensors:
	LCOZU Aisle motion sensor, pre-wired ^{18, 19}
	LCHOSZU Aisle motion sensor, pre-wired; programmable dimming ^{18, 19}
	LCPZU Aisle motion sensor with photocell; pre-wired ^{18, 19}
	LAOZU 360° motion sensor, pre-wired ^{18, 19}
	LAHOSZU 360° motion sensor, pre-wired; programmable dimming (only available with programmable dimming ballasts) ^{18, 19}
	LAPZU 360° motion sensor with photocell, pre-wired ^{17, 18}
	MSE360 360° motion sensor, embedded, high bay ^{18, 19}
	MSE360LB 360° motion sensor, embedded, low bay ^{18, 19}
	nPP16D nLight switching/dimming module ²⁰
	nMSI nLight, aisle motion sensor, pre-wired ²¹
	nMSI360 nLight, 360° motion sensor, pre-wired ²²

Accessories: Order as separate catalog number.			
Mounting:		Field-installable door and lens assemblies: ^{24, 25}	Cord sets and sensors for IMP option:
IBAC120 M20 Aircraft cable 10' with hook (one pair)	DLIBZ14 A12125 4-lamp pattern 12 acrylic lens, 0.125" ^{24, 25}	CS1WIMP Straight plug, 120V ^{9, 15, 16}	WGIBZ14 Standard 4-lamp wireguard
IBAC240 M20 Aircraft cable 20' with hook (one pair)	DLIBZ14 ACL 4-lamp clear acrylic lens ^{24, 25}	CS3WIMP Twist-lock, 120V ^{9, 15, 16}	WGIBZ19 Standard 6-lamp wireguard
IBHMP Hook monopoint	DLIBZ14 PCL125 4-lamp clear polycarbonate lens, 0.125" ^{24, 25}	CS7WIMP Straight plug, 277V ^{9, 15, 16}	WGIBZ24 Standard 8-lamp wireguard
IBZACVH Aircraft 10' V hanger (one pair)	DLIBZ19 A12125 6-lamp pattern 12 acrylic lens, 0.125" ^{24, 25}	CS11WIMP Twist-lock, 277V ^{9, 15, 16}	
IBZTFC Tandem coupler and side panel	DLIBZ19 ACL 6-lamp clear acrylic lens ^{24, 25}	CS25WIMP Twist-lock 347V	
IBZPMP Pendant monopoint splice box, includes side covers ²³	DLIBZ19 PCL125 6-lamp clear polycarbonate lens, 0.125" ^{24, 25}	CS93WIMP 600V SO white cord, no plug (no voltage required) ¹⁵	
IBZPMPHB Pendant monopoint splice box, includes side covers (3/4" hub) ²³	DLIBZ24 ACL 8-lamp clear acrylic lens ^{24, 25}	CS97WIMP Twist-lock 480V	
HBBS36 Chain hanger, 36" (one pair)	DLIBZ24 PCL125 8-lamp clear polycarbonate lens, 0.125" ^{24, 25}	MSIIMP Aisle sensor ^{9, 26}	
IBZSMB Surface-mounting bracket (one pair)		MSI360IMP 360° sensor ^{9, 26}	

Notes

- Lamps installed are F54T5H0/841 unless otherwise specified
- 5/55°F warranty with open fixtures only.
- Not available with MSE360 option.
- For wireguard in door frame, add "WG" to shielding. Ex: A12125WG
- Nonstandard configurations may require factory installed BACKPACK™. Consult factory.
- Certain ballast may require a BACKPACK™ installed by the factory in order to accommodate the size of the battery. The BACKPACK™ is NOT field installable. May only be surface mounted using IBZSMB. Not available with pendant mount using IBZPMP or IBZPMPHB. Not available with IMP.
- Not available with HVOLT.
- Not for use with motion sensors.
- Specify voltage. Consult factory for Canadian applications.
- Not available with 347 voltage

- Battery options require a BACKPACK™ installed by the factory in order to accommodate the size of the battery. The BACKPACK is NOT field installable. May only be surface mounted using IBZSMB. Not available with pendant mount using IBZPMP or IBZ PMPHB. Not available with IMP.
- Certified to UL1598 (approx. 1100 lumens at 25°C when using 49W lamps, and 911 lumens at 45°C), Single-lamp operation only. 120 or 277 voltage only.
- Max 2500 lumens when used with 54W T5 lamps up to 55°C ambient temperature (120 or 277 voltage only).
- Must be factory-installed. Not available on TIBZ 16-lamp configurations. Must have "IMP" power cord to power fixture.
- All cord sets are 18/3, 6' white.
- Cord sets are voltage specific. Specify voltage. Other configurations available. Consult factory.
- One wireguard shipped as separate line item for top installation in field. Not available with IBZPMP.

- Specify voltage
- Other configurations available, see page four for additional options
- nPP16D options utilizes nPP16 and a nLO D KO device, CAT5e connector cable also included. Available 120 or 277V only.
- nMSI option utilizes nPP16 and a nCMB 50, CAT5e cable also include. Available 120 or 277V only.
- nMSI360 option utilizes a nPP16 and a nCMB 6, CAT5e cable also included. Available 120 or 277V only.
- When ordering IBZPMP, two-ballasts configurations are recommended. Ex: 2/2. Not available with tandem units.
- Not available with any battery pack.
- Not available with MSE360 or MSE360LB.
- Must have "IMP" power cord to power fixture.

LSXR - Fixture Mount Sensor (see www.sensorswitch.com for additional information)

- Four interchangeable lenses.
- Integrated mounting bracket drops lens down 3" from chase nipple.
- Single or dual relay versions — designed with robust protection from the harsh switching requirements of T5 and LED loads.
- Photocell and 0-10VDC dimming options.
- No PIR field calibration or sensitivity adjustments required.



LSXR configuration	Comparable CMRB sensor	Old style sensor nomenclature
For shortest lead times use one of the following LSXR configurations		
LCOZU	CMRB 50	MSI
LCHOSZU	CMRB 50 D	MSID
LCPZU	CMRB 50 P	MSIPED
LAOZU	CMRB 6	MSI360
LAHOSZU	CMRB 6 D	MSI360D
LAPZU	CMRB 6 P	MSI360PED

SELECTIONS BELOW WILL EXTEND ORDER LEAD TIME. CONSULT YOUR SALES REPRESENTATIVE FOR DETAILS.

SINGLE RELAY

ORDERING INFORMATION

Lead times will vary depending on options selected. Consult with your sales representative.

Example: LAHOSZU

Series	Lens option	Dimming/Photocell	Max. dim Level	Min. dim level	Temp/Humidity	Default time delay
L LSXR passive infrared indoor occupancy sensor	A High mount, 360°	0 None ¹	0 10 VDC	5 Minimum dimming level of ballast	Z None	I 30 seconds
	B Low mount, 360°	H High/low occupancy operation	9 9 VDC	1 1 VDC	T Low temperature	D 2.5 minutes
	C High mount aisleway	P Switching photocell(on/off)	8 8 VDC	2 2 VDC		X 5 minutes
		M Dimming and switching photocell	7 7 VDC	3 3 VDC		R 7.5 minutes
		G Dimming and switching photocell with high/low occupancy operation		4 4 VDC		U 10 minutes (with minimum 15 minutes on time)
				5 5 VDC		V 15 minutes
				6 6 VDC		W 20 minutes
					Y 30 minutes	

DUAL RELAY (Available with 120, 277, and 347V only)

ORDERING INFORMATION

Lead times will vary depending on options selected. Consult with your sales representative.

Example: LA2KZU

Series	Lens option	Poles	Operating mode	Temp/Humidity	Default time delay
L LSXR passive infrared indoor occupancy sensor	A High mount, 360°	2 Dual relay	J None	Z None	I 30 seconds
	B Low mount, 360°		K Alternating off relays (promotes even lamp wear)	T Low temperature	D 2.5 minutes
	C High mount aisleway		O Alternating off relays w/photocell		X 5 minutes
			P Switching photocell(on/off)		R 7.5 minutes
			E Photocell on/off (pole 1 only)		U 10 minutes (with minimum 15 minutes on time)
			F Photocell on/off - both poles (dual set-point)		V 15 minutes
					W 20 minutes
					Y 30 minutes

Example: LENS 50 J100

Replacement lenses: Order as separate catalog number.		
Series	Lens type	Package quantity
Lens	6 High mount 360°	U Unit
	10 Low mount 360°	J10 10-pack
	50 High mount aisleway	J100 100-pack

Notes

- 1 Dimming level fields not required when this option is chosen.

OPTIONS AND ACCESSORIES

The I-BEAM fixture offers numerous options for almost every electrical and optical component, including a long list of field-installable accessories.



INTEGRATED MODULAR PLUG (IMP)

Must be factory-installed and allows for field installation of various modular accessories including cordsets, motion sensors, photocells and LC&D XPoint™ relays. Requires IMP cordset for operation.

Order as:
IMP



IBZ BACKPACK™

Electrical box must be factory-installed to house additional components such as emergency ballasts, step-down transformers and dimming ballasts. Extended brackets allow air flow for increased heat management of all components.

Factory-installed.

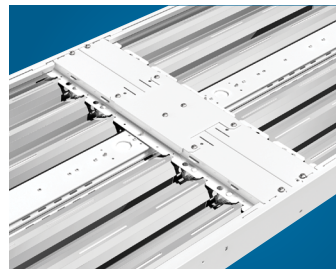


V-SHAPED WIRE GUARD (external)

Flex on impact to absorb shock, reducing damage to the fixture assemblies. Wire guards can be mounted on top and bottom of fixtures to provide full protection.

Factory-installed option:
WGX
2WGX

Field-installed option:
WGIBZ14
WGIBZ19
WGIBZ24



TANDEM CAPABILITY

Supports applications requiring high luminance and high mounting heights. The 8' tandem option is factory-assembled with continuous steel side panels and tensioning couplers. Tandem kits are also available for field installation.

Factory-installed option:
TIBZ

Field-installed option:
IBZTFC



PENDANT MONOPOINT BRACKET

Accepts 3/4" rigid conduit for single-point mounting. The bracket can be adjusted to help counterbalance fixture to off set weight variance from end to end.

Order as:
IBZPMP
IBZPMPHB