

Countertop Box Kits



Round Plastic Box with Round Brass or Nickel Trapdoor Covers



The round box and cover allow for positioning the assembly parallel with the countertop and backsplash!

Solves the 'ANGLED BOX' problem!...



Arlington's **Countertop BOX KITS** with round plastic boxes and round metal covers give you *options* for installing a device in a countertop. *AND a parallel, great-looking installation!*

Get your kit with an installed UL Listed tamper resistant decorator-style GFCI... a tamper resistant receptacle... or a TR receptacle with two USB ports!

The gasketed, brass or nickel-plated **ROUND TRAPDOOR COVERS** look great! They cover miscut openings, and close flush with the countertop, preventing damage to the devices in the box.

Easy, secure installation
A steel spring clip holds the plastic box securely against the surface when the screws are tightened. It's also 'bendable' so it's easy to insert into the opening in the countertop.

- Fits granite or other countertop material up to 1-1/2" thick
- Easy 'No Glue' installation



1 Stauffer Industrial Park
Scranton, PA 18517
800/233.4717
Fax 570/562.0646
www.aifittings.com

Countertop Box Kits



with Round Brass or Nickel-plated Trapdoor Covers

Easy to install



1 Determine box location. Cut a 5" diameter opening in countertop. Insert box, bending the clip as necessary to go through opening.



2 Secure box to countertop by tightening two #10 screws inside box...



UNDERSIDE of COUNTER

3 ...drawing the box securely against the underside of the counter. NO GLUING!



4 Wire receptacle in accordance with National, State and local codes.



5 Install trapdoor coverplate to box using the two #6-32 screws provided. *Note: Round cover hides miscut openings*



6 Rotate box/cover assembly into position, lining it up parallel with the countertop and backsplash.



PARALLEL Installation



Round Plastic Box with ROUND Metal Covers

Catalog Number	UPC/DEI/NAED Mfg. #018997	Description Metal Cover Finish	Installed UL LISTED Device	Unit/Std Pkg
FLBT6520UMB	22056	Brass	20A decorator-style TR receptacle, with (2) USB ports	1
FLBT6520MB	22112	Brass	20A decorator-style Tamper Resistant receptacle	1
FLBT6520GMB	22110	Brass	20A decorator-style Tamper Resistant GFCI receptacle	1
FLBT6520UNL	22057	Nickel-plated	20A decorator-style TR receptacle, with (2) USB ports	1
FLBT6520NL	22113	Nickel-plated	20A decorator-style Tamper Resistant receptacle	1
FLBT6520GNL	22111	Nickel-plated	20A decorator-style Tamper Resistant GFCI receptacle	1



FLBT6520MB



FLBT6520GMB



FLBT6520UMB



FLBT6520NL



FLBT6520GNL



FLBT6520UNL

with 20A decorator-style TR receptacle

with 20A decorator-style TR, GFCI receptacle

with 20A decorator-style TR receptacle w (2) USB ports



1 Stauffer Industrial Park
Scranton, PA 18517

800/233.4717

Fax 570/562.0646

www.aifittings.com

Distributed by

Countertop Box Kits

NEW!
PLASTIC BOX

NEW!
more on
reverse

Round Plastic Box with Round Brass or Nickel Trapdoor Covers



The round box and cover allow for positioning the assembly parallel with the countertop and backsplash!

Solves the 'ANGLED BOX' problem!...



Arlington's **Countertop BOX KITS** with round plastic boxes and round metal covers give you *options* for installing a device in a countertop. *AND a parallel, great-looking installation!*

Get your kit with an installed UL Listed tamper resistant decorator-style GFCI... a tamper resistant receptacle... or a TR receptacle with two USB ports!

The gasketed, brass or nickel-plated **ROUND TRAPDOOR COVERS** look great! They cover miscut openings, and close flush with the countertop, preventing damage to the devices in the box.

Easy, secure installation
A steel spring clip holds the plastic box securely against the surface when the screws are tightened. It's also 'bendable' so it's easy to insert into the opening in the countertop.

- Fits granite or other countertop material up to 1-1/2" thick
- Easy 'No Glue' installation

A™
Listed
Receptacle

Arlington®

1 Stauffer Industrial Park
Scranton, PA 18517
800/233.4717
Fax 570/562.0646
www.aifittings.com

Countertop Box Kits



with Round Brass or Nickel-plated Trapdoor Covers

Easy to install



1 Determine box location. Cut a 5" diameter opening in countertop. Insert box, bending the clip as necessary to go through opening.



2 Secure box to countertop by tightening two #10 screws inside box...



UNDERSIDE of COUNTER

3 ...drawing the box securely against the underside of the counter. NO GLUING!



4 Wire receptacle in accordance with National, State and local codes.



5 Install trapdoor coverplate to box using the two #6-32 screws provided. *Note: Round cover hides miscut openings*



6 Rotate box/cover assembly into position, lining it up parallel with the countertop and backsplash.

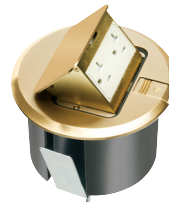


PARALLEL Installation



Round Plastic Box with ROUND Metal Covers

Catalog Number	UPC/DEI/NAED Mfg. #018997	Description Metal Cover Finish	Installed UL LISTED Device	Unit/Std Pkg
FLBT6520UMB	22056	Brass	20A decorator-style TR receptacle, with (2) USB ports	1
FLBT6520MB	22112	Brass	20A decorator-style Tamper Resistant receptacle	1
FLBT6520GMB	22110	Brass	20A decorator-style Tamper Resistant GFCI receptacle	1
FLBT6520UNL	22057	Nickel-plated	20A decorator-style TR receptacle, with (2) USB ports	1
FLBT6520NL	22113	Nickel-plated	20A decorator-style Tamper Resistant receptacle	1
FLBT6520GNL	22111	Nickel-plated	20A decorator-style Tamper Resistant GFCI receptacle	1



FLBT6520MB



FLBT6520GMB



FLBT6520UMB



FLBT6520NL



FLBT6520GNL



FLBT6520UNL

with 20A decorator-style TR receptacle

with 20A decorator-style TR, GFCI receptacle

with 20A decorator-style TR receptacle w (2) USB ports



1 Stauffer Industrial Park
Scranton, PA 18517
800/233.4717
Fax 570/562.0646
www.aifittings.com

Distributed by