

# 4C EDS / EFS Series Control Stations

## FlexStation™ Control Station Components

Cl. I, Div. 1 & 2, Groups B (Div. 2 only) C, D  
 Cl. II, Div. 1 & 2, Groups E, F, G  
 Cl. III  
 Zone 1 & 2 Group IIB  
 NEMA 3R, 7B\* (Div. 2) CD, 9 EFG, 12

### Applications:

Five modular components – operators, contact blocks, covers, legend plates, and bodies – are combined to provide a variety of control stations which are:

- For use indoors or outdoors, in areas which are hazardous due to the presence of flammable gases and vapors, or combustible dust.
- Used in conjunction with magnetic starters or contactors for remote control of motors and other electrical apparatus.
- For installation in petroleum refineries, chemical, petrochemical, and other industrial process facilities; grain processing and storage facilities; and other heavy industrial applications where Class I, Class II, or Class III hazards are present.



### Features:

- Momentary contact pushbuttons, maintained contact pushbuttons, and pilots lights offer a choice of functions.
- Selector switches in 2 or 3 position configurations including keyed and spring return options.
- Single-hole, two-hole, and three-hole covers for one, two, or three devices respectively per station.
- Rugged control devices for safe, reliable operation in industrial applications.
- Bodies, with extra room for wire pulling and termination, also include two integral mounting feet for fast, secure installation.
- Bodies have 1/2", 3/4", or 1" dead-end or through-feed conduit hubs with integral bushing for protection of wire insulation.
- Covers and bodies are available in *Feraloy*® or copper-free aluminum for light weight and corrosion resistance.
- DL legend plates have large lettering to give clear indication of device function. Space is available for field markings.

### Certifications and Compliances:

- NEC  
 Class I, Division 1 & 2, Groups B\* (Div. 2), C, D  
 Class II, Division 1 & 2, Groups E, F, G  
 Class III
- Zone 1 & 2 Group IIB\*
- NEMA: 3R, 7B (Div. 2) CD, 9EFG, 12
- UL Standard: 1203

### Standard Materials:

- Bodies, covers – *Feraloy*® or copper-free aluminum.
- Pushbuttons and guards – Type 6 / 6 nylon.
- Operating shafts, bearings – stainless steel.

### Standard Finishes:

- *Feraloy*® iron alloy – electrogalvanized and aluminum acrylic paint.
- Copper-free aluminum – natural.
- Stainless steel – natural.

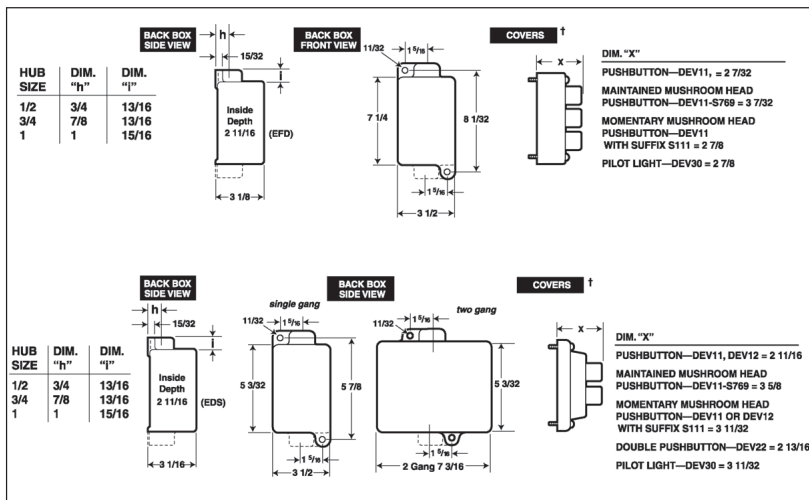
### Options:

| Description  | Suffix |
|--|--------|
| Copper-free aluminum bodies and covers                               | SA     |
| Corro-free™ epoxy finish for use in severely corrosive environments. | S752   |

### Electrical Ratings:

- Pushbuttons and selector switches – 600 VAC heavy duty (NEMA A600).
- Pilot lights – 120 VAC.

### Dimensions In Inches:



†Covers have same length and width as back boxes.  
 \*For Class I, Division 1, Group B or Zone 1 Hydrogen applications, use the EFS(C) complete control station catalog numbers see page 526.

# EDS / EFS Series Control Stations

## FlexStation™ Control Station Components

Cl. I, Div. 1 & 2, Groups B (Div. 2 only) C, D  
Cl. II, Div. 1 & 2, Groups E, F, G  
Cl. III  
Zone 1 & 2 Group IIB  
NEMA 3R, 7B\* (Div. 2) CD, 9 EFG, 12

**4C**

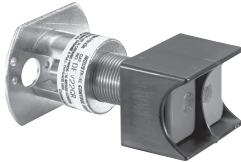
**4C**

### STEP 1 – Select Operator

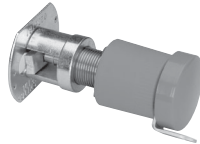
#### Pushbutton – front operated, standard black button



| Description                         | Cat. # |
|-------------------------------------|--------|
| Single button for 1 contact block   | DEV11  |
| Single button for 2 contact blocks  | DEV12  |
| Double buttons for 2 contact blocks | DEV22  |



| Options  | Suffix |
|--|--------|
| <b>Specify color for each pushbutton button (ex: DEV11G, DEV22GR). Color is black if unspecified.</b>  |        |
| Green button - unmarked  | G      |
| Red button - unmarked  | R      |
| Momentary red mushroom head (breaks normally closed contacts only, not available with lockout or DEV22)  | S111   |
| Lockout with bar and chain (available on DEV11 and DEV12)  | S153   |
| Maintained red mushroom head (breaks normally closed and makes normally open contacts, push to stop, lockout standard, not available with DEV22) | S769   |



#### Pilot Light – factory sealed, incandescent lamp



| Description                               | Cat. #        |
|---|---------------|
| Pilot light with red jewel                | DEV30 J1      |
| Pilot light with green jewel              | DEV30 J3      |
| Pilot light with amber jewel              | DEV30 J6      |
| Pilot light with clear jewel              | DEV30 J10     |
| Pilot light with blue LED and clear jewel | DEV30 J11 LED |

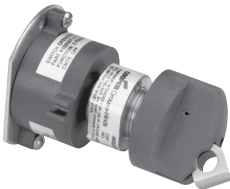


| Options  | Suffix |
|--|--------|
| LED lamps (standard clear jewel with colored lamp) | LED    |
| 24 V lamp (not available with transformer feature) | S300   |
| 240 / 120 V pilot light transformer                | T2     |
| 480 / 120 V pilot light transformer                | T4     |
| 600 / 120 V pilot light transformer                | T5     |

#### Selector Switch – with standard lockout



| Description   | Cat. # |
|---|--------|
| 2-position (pos. 1 – N.O., pos. 2 – N.C.) for use with 1 or 2 contact blocks  | DEV42  |
| 3-position (pos. 1 – N.O., pos. 2 – Open, pos. 3 – N.C.) for use with 1 or 2 contact blocks   | DEV43  |
| 3-position (pos. 1 – N.C., pos. 2 – N.O., pos. 3 – N.O. for Switch A)<br>(pos. 1 – N.O., pos. 2 – N.O., pos. 3 – N.C. for Switch B) for use with 2 contact blocks | DEV44  |



| Options  | Suffix   |
|--|----------|
| Spring return to center from right (For DEV43 or DEV44 only)                             | S634     |
| Spring return to center from left (For DEV43 or DEV44 only)                              | S635     |
| Spring return to center from right and left (For DEV43 or DEV44 only)                    | S842     |
| Key Operated – removable from all positions  | S847 K1* |
| Key Operated – removable from left position for DEV42 or from center for DEV43 and DEV44 | S847 K2* |
| Key Operated – removable from right position for DEV42 or from left for DEV43 and DEV44  | S847 K3* |
| Key Operated – removable from right position for DEV43 and DEV44                         | S847 K4* |

\*Additional key lock housings available; please contact Customer Service.

### STEP 2 – Select Contact Block (if required). For product details see page 571.

#### Contact Block



| Description  | Cat. #  |
|--|---------|
| Contact block, 1 NO and 1 NC, 10A, 600VAC, A600 rating | ESWP126 |

For additional technical information see page 571.

Note - Each control station will accept a maximum of three contact blocks. Select device operators accordingly. DEV12, DEV22 and DEV44 may not be used on a three-operator (DS443-SA) cover. DEV42 and DEV43 may not be used on a three-operator cover when using them with two contact blocks.

# 4C

## EDS / EFS Series Control Stations

### FlexStation™ Control Station Components

Cl. I, Div. 1 & 2, Groups B (Div. 2 only) C, D  
Cl. II, Div. 1 & 2, Groups E, F, G  
Cl. III  
Zone 1 & 2 Group IIB  
NEMA 3R, 7B\* (Div. 2) CD, 9 EFG, 12

#### STEP 3 – Select Desired Legend Plates

For use with single hole covers

| Cat. # | Inscription     |
|--------|-----------------|
| DL101  | Blank           |
| DL128  | Run-Jog         |
| DL129  | Hand-Auto       |
| DL130  | Forward-Reverse |
| DL132  | Open-Close      |
| DL133  | Up-Down         |
| DL135  | In-Out          |
| DL136  | Raise-Lower     |
| DL137  | Start-Stop      |
| DL138  | Run-Off-Jog     |
| DL139  | Hand-Off-Auto   |
| DL140  | For-Off-Rev     |
| DL141  | Fast-Off-Slow   |
| DL142  | 1-Off-2         |
| DL143  | Open-Off-Close  |
| DL144  | Up-Off-Down     |
| DL148  | Off-On          |
| DL149  | Auto-Off-Hand   |
| DL165  | Slow-Fast       |
| DL186  | Safe-Run        |
| DL187  | Raise-Off-Lower |
| DL188  | Slow-Off-Fast   |
| DL189  | Odd-Off-Even    |
| DL190  | Stop-Start      |
| DL191  | On-Off          |
| DL192  | Fast-Slow       |
| DL193  | Local-Remote    |
| DL194  | Trip-Reset      |
| DL195  | Auto-Manual     |
| DL196  | Start-Emer Stop |
| DL197  | Alarm-Silence   |
| DL198  | Maint-Manual    |
| DL199  | Test-Reset      |

For use with 2 or 3 hole covers

| Cat. # | Inscription          | Cat. # | Inscription     |
|--------|----------------------|--------|-----------------|
| DL01   | Blank w/no fields    | DL32   | Open-Close      |
| DL02   | Blank w/single field | DL33   | Up-Down         |
| DL03   | Blank w/2 fields     | DL35   | In-Out          |
| DL05   | Start                | DL36   | Raise-Lower     |
| DL06   | Stop                 | DL37   | Start-Stop      |
| DL07   | On                   | DL38   | Run-Off-Jog     |
| DL08   | Off                  | DL39   | Hand-Off-Auto   |
| DL09   | Run                  | DL40   | For-Off-Rev     |
| DL10   | Jog                  | DL41   | Fast-Off-Slow   |
| DL11   | Trip                 | DL42   | 1-Off-2         |
| DL12   | Reset                | DL43   | Open-Off-Close  |
| DL13   | Test                 | DL44   | Up-Off-Down     |
| DL14   | Power On             | DL46   | Fast            |
| DL15   | Hand                 | DL47   | Slow            |
| DL16   | Automatic            | DL48   | Off-On          |
| DL17   | Emer Stop            | DL49   | Auto-Off-Hand   |
| DL18   | Forward              | DL65   | Slow-Fast       |
| DL19   | Reverse              | DL85   | Safe            |
| DL20   | Open                 | DL86   | Safe-Run        |
| DL21   | Close                | DL87   | Raise-Off-Lower |
| DL22   | Up                   | DL88   | Slow-Off-Fast   |
| DL23   | Down                 | DL89   | Odd-Off-Even    |
| DL24   | In                   | DL90   | Stop-Start      |
| DL25   | Out                  | DL91   | On-Off          |
| DL26   | Raise                | DL92   | Fast-Slow       |
| DL27   | Lower                | DL93   | Local-Remote    |
| DL28   | Run-Jog              | DL94   | Trip-Reset      |
| DL29   | Hand-Auto            | DL95   | Auto-Manual     |
| DL30   | Forward-Reverse      | DL96   | Start-Emer Stop |
|        |                      | DL97   | Alarm-Silence   |
|        |                      | DL98   | Maint-Manual    |
|        |                      | DL99   | Test-Reset      |

Note: For special markings order DL101-"desired markings" or DL01-"desired markings"

#### STEP 4 – Select Cover Covers



| Description   | Cat. #   |
|---|----------|
| Blank cover with single hole (Single gang)  | DS441    |
| Blank cover with 2 holes (Single gang)  | DS442    |
| Blank cover with 3 holes (To be used with EFD(C)1491-SA, 2491-SA or 3491-SA series of back boxes) | DS443 SA |
| Replacement cover plug for unused device operator openings  | 206765   |



| Options:   | Suffix |
|--|--------|
| Aluminum body (mandatory suffix on DS443 must be included in catalog number)                   | SA     |
| Exterior epoxy powder coat finish  | S752   |
| Interior & exterior epoxy powder coat finish. Not available on three operator cover (DS443-SA) | S753   |

# EDS / EFS Series Control Stations

## FlexStation™ Control Station Components

Cl. I, Div. 1 & 2, Groups B (Div. 2 only) C, D  
 Cl. II, Div. 1 & 2, Groups E, F, G  
 Cl. III  
 Zone 1 & 2 Group IIB  
 NEMA 3R, 7B\* (Div. 2) CD, 9 EFG, 12

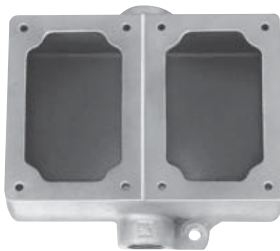
**4C**

### STEP 5 – Select Back Box

Back Boxes - for use with DS441 and DS442 covers or with 1 gang and 2 gang DS/DSD Series covers



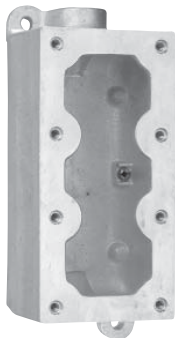
| Dead End | Through Feed | Hub Size | Back Box Arrangement |
|----------|--------------|----------|----------------------|
| EDS171   | EDSC171      | 1/2"     | Single gang back box |
| EDS271   | EDSC271      | 3/4"     | Single gang back box |
| EDS371   | EDSC371      | 1"       | Single gang back box |
| EDS172   | EDSC172      | 1/2"     | Double gang back box |
| EDS272   | EDSC272      | 3/4"     | Double gang back box |
| EDS372   | EDSC372      | 1"       | Double gang back box |



| Options:                                     | Suffix |
|--|--------|
| Aluminum body                                | SA     |
| Exterior epoxy powder coat finish            | S752   |
| Interior & exterior epoxy powder coat finish | S753   |

4C

Back Boxes – for use with DS443-SA cover or with 1½ gang DS511 (3-operator) Series covers



| Dead End   | Through Feed | Hub Size | Back Box Arrangement |
|------------|--------------|----------|----------------------|
| EFD1491 SA | EFDC1491 SA  | 1/2"     | 1½ gang back box     |
| EFD2491 SA | EFDC2491 SA  | 3/4"     | 1½ gang back box     |
| EFD3491 SA | EFDC3491 SA  | 1"       | 1½ gang back box     |

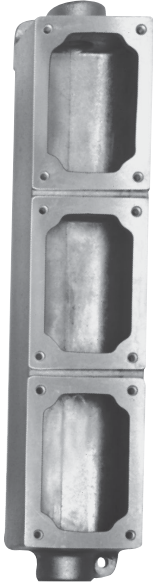
| Options                                      | Suffix |
|--|--------|
| Exterior epoxy powder coat finish            | S752   |
| Interior & exterior epoxy powder coat finish | S753   |

# 4C EDS / EFS Series Control Stations

## FlexStation™ Control Station Components

Cl. I, Div. 1 & 2, Groups B (Div. 2 only) C, D  
 Cl. II, Div. 1 & 2, Groups E, F, G  
 Cl. III  
 Zone 1 & 2 Group IIB  
 NEMA 3R, 7B\* (Div. 2) CD, 9 EFG, 12

### Back Boxes – for use with DS441 and DS442 covers



4C

| Through Feed | Hub Size | Back Box Arrangement |
|--------------|----------|----------------------|
| EDSC378      | 1"       | 3 gang tandem        |

#### Common Cover Assemblies

| Cat. #    | Description                             |
|-----------|---|
| DS455 ①   | With one pilot light                    |
| DS476 ① ② | With one pilot light and transformer    |
| DS456 ① ① | With two pilot lights                   |
| DS429§    | With one pushbutton                     |
| DS454§    | With two pushbuttons                    |
| DS510 ①§  | With one pushbutton and one pilot light |

①Add color symbol for each pilot light from table below.

| Color | Symbol | Color | Symbol | Color | Symbol |
|-------|--------|-------|--------|-------|--------|
| Red   | J1     | Amber | J6     | Blue  | J11    |
| Green | J3     | Clear | J10    |       |        |

②Add suffix below for transformer primary voltage:

#### Transformers – Voltages above 125

| Nom. Volts 50–60Hz Transformer | Primary Voltage Range | Suffix |
|--------------------------------|-----------------------|--------|
| 220 / 110                      | 220–240               | T2     |
| 440 / 110                      | 440–480               | T4     |
| 550 / 110                      | 550–600               | T5     |

§ If desired, markings on indicating plates may be added to catalog number. Select from the list of standard markings below:

|           |       |       |           |
|-----------|-------|-------|-----------|
| START     | OFF   | RESET | LIGHT ON  |
| STOP      | RUN   | TRIP  | HAND      |
| ON        | JOG   | TEST  | AUTOMATIC |
| EMERGENCY | OPEN  | DOWN  | RAISE     |
| FORWARD   | CLOSE | IN    | LOWER     |
| REVERSE   | UP    | OUT   |           |

# 4C EDS / EFS Series Control Stations

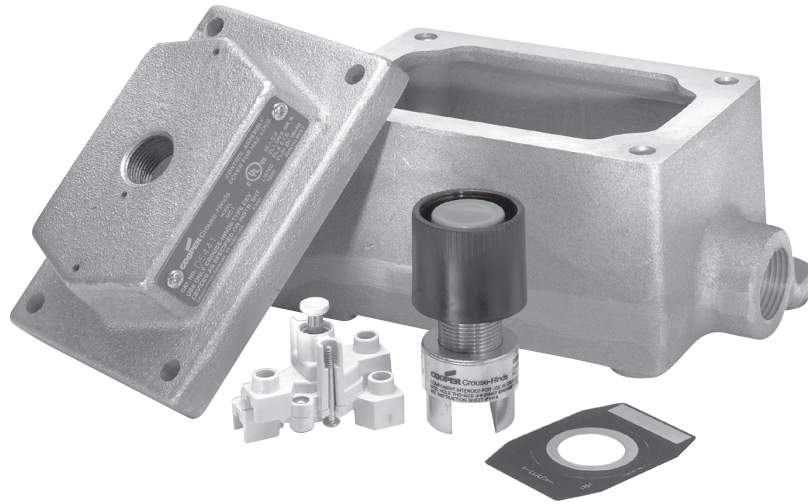
## FlexStation™ Control Station Components

Cl. I, Div. 1 & 2, Groups B (Div. 2 only) C, D  
 Cl. II, Div. 1 & 2, Groups E, F, G  
 Cl. III  
 Zone 1 & 2 Group IIB  
 NEMA 3R, 7B\* (Div. 2) CD, 9 EFG, 12

### Applications:

Five modular components – operators, contact blocks, covers, legend plates, and bodies – are combined to provide a variety of control stations which are:

- For use indoors or outdoors, in areas which are hazardous due to the presence of flammable gases and vapors, or combustible dust.
- Used in conjunction with magnetic starters or contactors for remote control of motors and other electrical apparatus.
- For installation in petroleum refineries, chemical, petrochemical, and other industrial process facilities; grain processing and storage facilities; and other heavy industrial applications where Class I, Class II, or Class III hazards are present.



### Features:

- Momentary contact pushbuttons, maintained contact pushbuttons, and pilots lights offer a choice of functions.
- Selector switches in 2 or 3 position configurations including keyed and spring return options.
- Single-hole, two-hole, and three-hole covers for one, two, or three devices respectively per station.
- Rugged control devices for safe, reliable operation in industrial applications.
- Bodies, with extra room for wire pulling and termination, also include two integral mounting feet for fast, secure installation.
- Bodies have 1/2", 3/4", or 1" dead-end or through-feed conduit hubs with integral bushing for protection of wire insulation.
- Covers and bodies are available in *Feraloy*® or copper-free aluminum for light weight and corrosion resistance.
- DL legend plates have large lettering to give clear indication of device function. Space is available for field markings.

### Certifications and Compliances:

- NEC  
 Class I, Division 1 & 2, Groups B\* (Div. 2), C, D  
 Class II, Division 1 & 2, Groups E, F, G  
 Class III
- Zone 1 & 2 Group IIB\*
- NEMA: 3R, 7B (Div. 2) CD, 9EFG, 12
- UL Standard: 1203

### Standard Materials:

- Bodies, covers – *Feraloy*® or copper-free aluminum.
- Pushbuttons and guards – Type 6 / 6 nylon.
- Operating shafts, bearings – stainless steel.

### Standard Finishes:

- *Feraloy*® iron alloy – electrogalvanized and aluminum acrylic paint.
- Copper-free aluminum – natural.
- Stainless steel – natural.

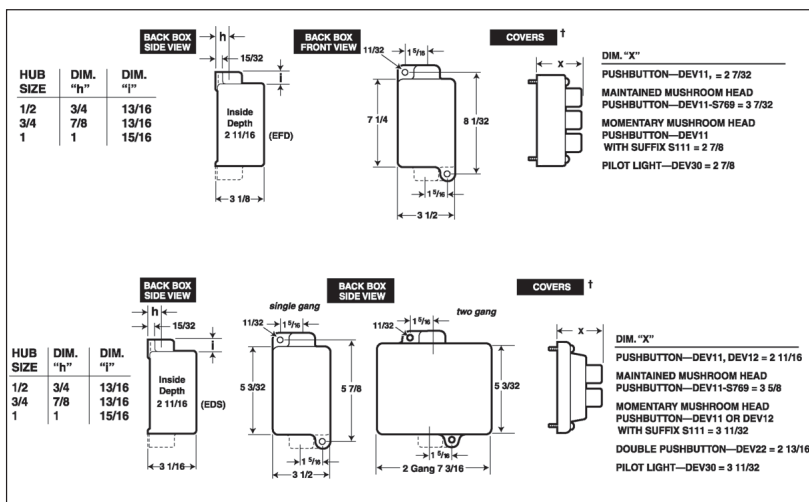
### Options:

| Description  | Suffix |
|--|--------|
| Copper-free aluminum bodies and covers                               | SA     |
| Corro-free™ epoxy finish for use in severely corrosive environments. | S752   |

### Electrical Ratings:

- Pushbuttons and selector switches – 600 VAC heavy duty (NEMA A600).
- Pilot lights – 120 VAC.

### Dimensions In Inches:



†Covers have same length and width as back boxes.

\*For Class I, Division 1, Group B or Zone 1 Hydrogen applications, use the EFS(C) complete control station catalog numbers see page 526.

# EDS / EFS Series Control Stations

## FlexStation™ Control Station Components

Cl. I, Div. 1 & 2, Groups B (Div. 2 only) C, D  
Cl. II, Div. 1 & 2, Groups E, F, G  
Cl. III  
Zone 1 & 2 Group IIB  
NEMA 3R, 7B\* (Div. 2) CD, 9 EFG, 12

**4C**

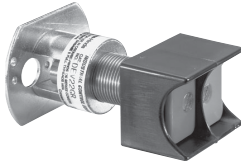
**4C**

### STEP 1 – Select Operator

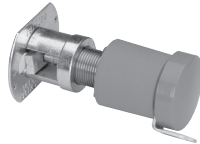
#### Pushbutton – front operated, standard black button



| Description                         | Cat. # |
|-------------------------------------|--------|
| Single button for 1 contact block   | DEV11  |
| Single button for 2 contact blocks  | DEV12  |
| Double buttons for 2 contact blocks | DEV22  |



| Options  | Suffix |
|--|--------|
| <b>Specify color for each pushbutton button (ex: DEV11G, DEV22GR). Color is black if unspecified.</b>  |        |
| Green button - unmarked  | G      |
| Red button - unmarked  | R      |
| Momentary red mushroom head (breaks normally closed contacts only, not available with lockout or DEV22)  | S111   |
| Lockout with bar and chain (available on DEV11 and DEV12)  | S153   |
| Maintained red mushroom head (breaks normally closed and makes normally open contacts, push to stop, lockout standard, not available with DEV22) | S769   |



#### Pilot Light – factory sealed, incandescent lamp



| Description                               | Cat. #        |
|---|---------------|
| Pilot light with red jewel                | DEV30 J1      |
| Pilot light with green jewel              | DEV30 J3      |
| Pilot light with amber jewel              | DEV30 J6      |
| Pilot light with clear jewel              | DEV30 J10     |
| Pilot light with blue LED and clear jewel | DEV30 J11 LED |

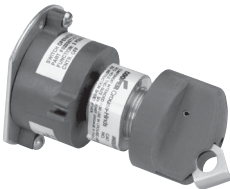


| Options  | Suffix |
|--|--------|
| LED lamps (standard clear jewel with colored lamp) | LED    |
| 24 V lamp (not available with transformer feature) | S300   |
| 240 / 120 V pilot light transformer                | T2     |
| 480 / 120 V pilot light transformer                | T4     |
| 600 / 120 V pilot light transformer                | T5     |

#### Selector Switch – with standard lockout



| Description   | Cat. # |
|---|--------|
| 2-position (pos. 1 – N.O., pos. 2 – N.C.) for use with 1 or 2 contact blocks  | DEV42  |
| 3-position (pos. 1 – N.O., pos. 2 – Open, pos. 3 – N.C.) for use with 1 or 2 contact blocks   | DEV43  |
| 3-position (pos. 1 – N.C., pos. 2 – N.O., pos. 3 – N.O. for Switch A)<br>(pos. 1 – N.O., pos. 2 – N.O., pos. 3 – N.C. for Switch B) for use with 2 contact blocks | DEV44  |



| Options  | Suffix   |
|--|----------|
| Spring return to center from right (For DEV43 or DEV44 only)                             | S634     |
| Spring return to center from left (For DEV43 or DEV44 only)                              | S635     |
| Spring return to center from right and left (For DEV43 or DEV44 only)                    | S842     |
| Key Operated – removable from all positions  | S847 K1* |
| Key Operated – removable from left position for DEV42 or from center for DEV43 and DEV44 | S847 K2* |
| Key Operated – removable from right position for DEV42 or from left for DEV43 and DEV44  | S847 K3* |
| Key Operated – removable from right position for DEV43 and DEV44                         | S847 K4* |

\*Additional key lock housings available; please contact Customer Service.

### STEP 2 – Select Contact Block (if required). For product details see page 571.

#### Contact Block



| Description  | Cat. #  |
|--|---------|
| Contact block, 1 NO and 1 NC, 10A, 600VAC, A600 rating | ESWP126 |

For additional technical information see page 571.

Note - Each control station will accept a maximum of three contact blocks. Select device operators accordingly. DEV12, DEV22 and DEV44 may not be used on a three-operator (DS443-SA) cover. DEV42 and DEV43 may not be used on a three-operator cover when using them with two contact blocks.

# 4C

# EDS / EFS Series Control Stations

## FlexStation™ Control Station Components

Cl. I, Div. 1 & 2, Groups B (Div. 2 only) C, D  
 Cl. II, Div. 1 & 2, Groups E, F, G  
 Cl. III  
 Zone 1 & 2 Group IIB  
 NEMA 3R, 7B\* (Div. 2) CD, 9 EFG, 12

4C

### STEP 3 – Select Desired Legend Plates

#### For use with single hole covers

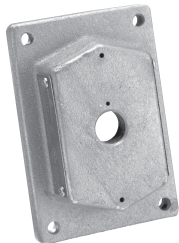
| Cat. # | Inscription     |
|--------|-----------------|
| DL101  | Blank           |
| DL128  | Run-Jog         |
| DL129  | Hand-Auto       |
| DL130  | Forward-Reverse |
| DL132  | Open-Close      |
| DL133  | Up-Down         |
| DL135  | In-Out          |
| DL136  | Raise-Lower     |
| DL137  | Start-Stop      |
| DL138  | Run-Off-Jog     |
| DL139  | Hand-Off-Auto   |
| DL140  | For-Off-Rev     |
| DL141  | Fast-Off-Slow   |
| DL142  | 1-Off-2         |
| DL143  | Open-Off-Close  |
| DL144  | Up-Off-Down     |
| DL148  | Off-On          |
| DL149  | Auto-Off-Hand   |
| DL165  | Slow-Fast       |
| DL186  | Safe-Run        |
| DL187  | Raise-Off-Lower |
| DL188  | Slow-Off-Fast   |
| DL189  | Odd-Off-Even    |
| DL190  | Stop-Start      |
| DL191  | On-Off          |
| DL192  | Fast-Slow       |
| DL193  | Local-Remote    |
| DL194  | Trip-Reset      |
| DL195  | Auto-Manual     |
| DL196  | Start-Emer Stop |
| DL197  | Alarm-Silence   |
| DL198  | Maint-Manual    |
| DL199  | Test-Reset      |

#### For use with 2 or 3 hole covers

| Cat. # | Inscription          | Cat. # | Inscription     |
|--------|----------------------|--------|-----------------|
| DL01   | Blank w/no fields    | DL32   | Open-Close      |
| DL02   | Blank w/single field | DL33   | Up-Down         |
| DL03   | Blank w/2 fields     | DL35   | In-Out          |
| DL05   | Start                | DL36   | Raise-Lower     |
| DL06   | Stop                 | DL37   | Start-Stop      |
| DL07   | On                   | DL38   | Run-Off-Jog     |
| DL08   | Off                  | DL39   | Hand-Off-Auto   |
| DL09   | Run                  | DL40   | For-Off-Rev     |
| DL10   | Jog                  | DL41   | Fast-Off-Slow   |
| DL11   | Trip                 | DL42   | 1-Off-2         |
| DL12   | Reset                | DL43   | Open-Off-Close  |
| DL13   | Test                 | DL44   | Up-Off-Down     |
| DL14   | Power On             | DL46   | Fast            |
| DL15   | Hand                 | DL47   | Slow            |
| DL16   | Automatic            | DL48   | Off-On          |
| DL17   | Emer Stop            | DL49   | Auto-Off-Hand   |
| DL18   | Forward              | DL65   | Slow-Fast       |
| DL19   | Reverse              | DL85   | Safe            |
| DL20   | Open                 | DL86   | Safe-Run        |
| DL21   | Close                | DL87   | Raise-Off-Lower |
| DL22   | Up                   | DL88   | Slow-Off-Fast   |
| DL23   | Down                 | DL89   | Odd-Off-Even    |
| DL24   | In                   | DL90   | Stop-Start      |
| DL25   | Out                  | DL91   | On-Off          |
| DL26   | Raise                | DL92   | Fast-Slow       |
| DL27   | Lower                | DL93   | Local-Remote    |
| DL28   | Run-Jog              | DL94   | Trip-Reset      |
| DL29   | Hand-Auto            | DL95   | Auto-Manual     |
| DL30   | Forward-Reverse      | DL96   | Start-Emer Stop |
|        |                      | DL97   | Alarm-Silence   |
|        |                      | DL98   | Maint-Manual    |
|        |                      | DL99   | Test-Reset      |

Note: For special markings order DL101-"desired markings" or DL01-"desired markings"

### STEP 4 – Select Cover Covers



| Description   | Cat. #   |
|---|----------|
| Blank cover with single hole (Single gang)  | DS441    |
| Blank cover with 2 holes (Single gang)  | DS442    |
| Blank cover with 3 holes (To be used with EFD(C)1491-SA, 2491-SA or 3491-SA series of back boxes) | DS443 SA |
| Replacement cover plug for unused device operator openings  | 206765   |



| Options:   | Suffix |
|--|--------|
| Aluminum body (mandatory suffix on DS443 must be included in catalog number)                   | SA     |
| Exterior epoxy powder coat finish  | S752   |
| Interior & exterior epoxy powder coat finish. Not available on three operator cover (DS443-SA) | S753   |



# EDS / EFS Series Control Stations

## FlexStation™ Control Station Components

Cl. I, Div. 1 & 2, Groups B (Div. 2 only) C, D  
Cl. II, Div. 1 & 2, Groups E, F, G  
Cl. III  
Zone 1 & 2 Group IIB  
NEMA 3R, 7B\* (Div. 2) CD, 9 EFG, 12

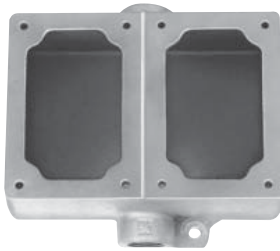
**4C**

### STEP 5 – Select Back Box

Back Boxes - for use with DS441 and DS442 covers or with 1 gang and 2 gang DS/DSD Series covers



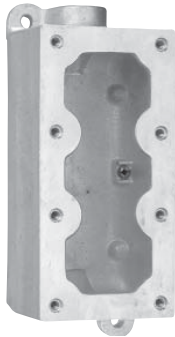
| Dead End | Through Feed | Hub Size | Back Box Arrangement |
|----------|--------------|----------|----------------------|
| EDS171   | EDSC171      | 1/2"     | Single gang back box |
| EDS271   | EDSC271      | 3/4"     | Single gang back box |
| EDS371   | EDSC371      | 1"       | Single gang back box |
| EDS172   | EDSC172      | 1/2"     | Double gang back box |
| EDS272   | EDSC272      | 3/4"     | Double gang back box |
| EDS372   | EDSC372      | 1"       | Double gang back box |



| Options:                                     | Suffix |
|--|--------|
| Aluminum body                                | SA     |
| Exterior epoxy powder coat finish            | S752   |
| Interior & exterior epoxy powder coat finish | S753   |

4C

Back Boxes – for use with DS443-SA cover or with 1½ gang DS511 (3-operator) Series covers



| Dead End   | Through Feed | Hub Size | Back Box Arrangement |
|------------|--------------|----------|----------------------|
| EFD1491 SA | EFDC1491 SA  | 1/2"     | 1½ gang back box     |
| EFD2491 SA | EFDC2491 SA  | 3/4"     | 1½ gang back box     |
| EFD3491 SA | EFDC3491 SA  | 1"       | 1½ gang back box     |

| Options                                      | Suffix |
|--|--------|
| Exterior epoxy powder coat finish            | S752   |
| Interior & exterior epoxy powder coat finish | S753   |

# 4C EDS / EFS Series Control Stations

## FlexStation™ Control Station Components

Cl. I, Div. 1 & 2, Groups B (Div. 2 only) C, D  
 Cl. II, Div. 1 & 2, Groups E, F, G  
 Cl. III  
 Zone 1 & 2 Group IIB  
 NEMA 3R, 7B\* (Div. 2) CD, 9 EFG, 12

### Back Boxes – for use with DS441 and DS442 covers



| Through Feed | Hub Size | Back Box Arrangement |
|--------------|----------|----------------------|
| EDSC378      | 1"       | 3 gang tandem        |

#### Common Cover Assemblies

| Cat. #    | Description                             |
|-----------|---|
| DS455 ①   | With one pilot light                    |
| DS476 ① ② | With one pilot light and transformer    |
| DS456 ① ① | With two pilot lights                   |
| DS429§    | With one pushbutton                     |
| DS454§    | With two pushbuttons                    |
| DS510 ①§  | With one pushbutton and one pilot light |

①Add color symbol for each pilot light from table below.

| Color | Symbol | Color | Symbol | Color | Symbol |
|-------|--------|-------|--------|-------|--------|
| Red   | J1     | Amber | J6     | Blue  | J11    |
| Green | J3     | Clear | J10    |       |        |

②Add suffix below for transformer primary voltage:

#### Transformers – Voltages above 125

| Nom. Volts 50–60Hz Transformer | Primary Voltage Range | Suffix |
|--------------------------------|-----------------------|--------|
| 220 / 110                      | 220–240               | T2     |
| 440 / 110                      | 440–480               | T4     |
| 550 / 110                      | 550–600               | T5     |

§ If desired, markings on indicating plates may be added to catalog number. Select from the list of standard markings below:

|           |       |       |           |
|-----------|-------|-------|-----------|
| START     | OFF   | RESET | LIGHT ON  |
| STOP      | RUN   | TRIP  | HAND      |
| ON        | JOG   | TEST  | AUTOMATIC |
| EMERGENCY | OPEN  | DOWN  | RAISE     |
| FORWARD   | CLOSE | IN    | LOWER     |
| REVERSE   | UP    | OUT   |           |