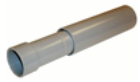




ELLIOTT ELECTRIC SUPPLY

We Deliver...Lower Cost, Quality Products, & Personal Service

2310 N. Stallings Dr.
75964-0000, TX Nacogdoches
Phone: 936-569-7941
Fax: 936-560-4685



E945E 3/4" SCH40 Expn CPLG

Abb Installation Products, Inc

| | |
|------------------|--|
| Catalog Number | E945E |
| Manufacturer | Abb Installation Products, Inc |
| Description | Coupling End Expansion Fitting, Size 3/4 Inch, Material PVC, Color Gray, For Use With Schedule 40 and 80, Pack Of 15 |
| Weight per unit | 0.2700 (lbs/each) |
| Product Category | PVC Clamps, Straps, Exp CPLGS |

Material, Color, and Finish

| | |
|-------|------|
| Color | Gray |
|-------|------|

Descriptions

| | |
|------------------------|--|
| Description | 3/4" SCH40 EXPN CPLG |
| extra long description | ABB E945E 3/4 IN SCH 40 EXPANSION C |
| Long Description | Coupling End Expansion Fitting, Size 3/4 Inch, Material PVC, Color Gray, For use with Schedule 40 and 80, Pack of 15 |
| Product Type | 3/4 In SCH 40 Expansion Coupling |
| Special Features | Exclusive molded in mid-point indicator on the piston |

Manufacturer Information

| | |
|---------------------------|----------------|
| Brand | Carlton |
| GTIN | 00034481061229 |
| Manufacturers Part Number | E945E |
| UPC | 034481061229 |

Taxonomies, Classifications, and Categories

| | |
|----------------------|---|
| Category Description | COUPLINGS, ADAPTERS, REDUCERS, BUSHINGS, & CAPS |
| Type | Expansion Fittings |

Packaging

| | |
|-----------------|------|
| Carton | 15 |
| Weight Per each | 0.27 |

Uses, Certifications, and Standards

| | |
|-------------|---|
| Application | Designed to compensate for length changes due to temperature variations in exposed conduit runs |
| standard | UL E23018 / UL E23018 |