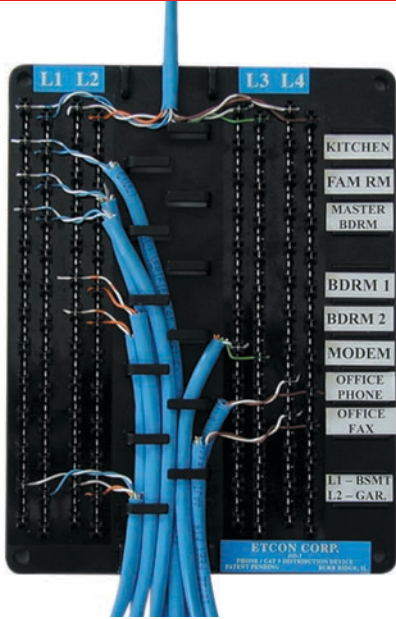


VOICE - DATA - VIDEO



DD1 PHONE DISTRIBUTION DEVICE FOR RESIDENTIAL AND SOHO PHONE INSTALLATIONS.

- Accommodates up to 4 lines.
- 12 outlets/stations per line.
- No bridging clips required.
- For use with Cat. 5E/5/3 phone wire.
- For use with 110 punch or push down tool.

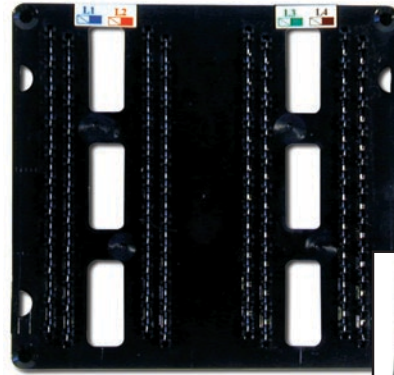
DD1K DD1 WITH THE DD110T PUSH DOWN TOOL.

1C COVER FOR DD1 PHONE DISTRIBUTION DEVICE.

DD1C DD1 AND COVER COMBO.

DD1CK DD1, COVER, AND THE DD110T PUSH DOWN TOOL.

DD1-FD 10 DD1 IN FLOOR DISPLAY



DD3 PHONE DISTRIBUTION DEVICE FOR RESIDENTIAL AND SOHO PHONE INSTALLATIONS.

- Accommodates up to 4 lines.
- 10 outlets/stations per line.
- No bridging clips required.
- Designed to be wired from the back for clean, organized appearance.
- For use with 110 punch or push down tool.

DD3K DD3 WITH THE DD110T PUSH DOWN TOOL.

3C COVER FOR DD3 PHONE DISTRIBUTION DEVICE.

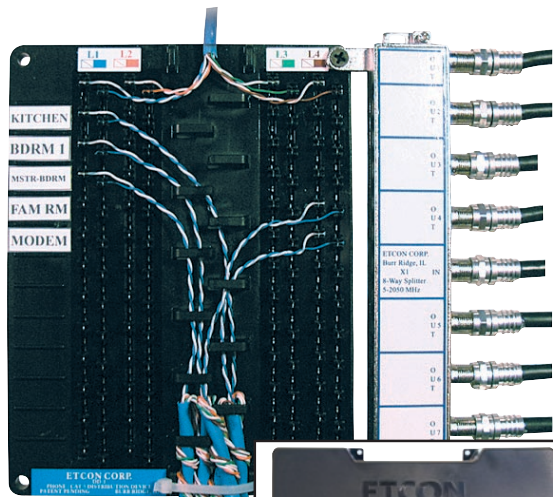
DD3C DD3 AND COVER COMBO.

DD3CK DD3, COVER, AND THE DD110T PUSH DOWN TOOL

DD3CX DD3, COVER, AND 4 WAY VIDEO SPLITTER.

DD3CXNS DD3, 4-WAY VIDEO SPLITTER, DATA NETWORK, SECURITY AND COVER COMBO.

DD3-FD 10 DD3 IN FLOOR DISPLAY



DD1X1 PHONE DISTRIBUTION DEVICE WITH 8-WAY 2050 MHZ (2GHZ) SPLITTER FOR RESIDENTIAL AND SOHO PHONE AND VIDEO INSTALLATIONS.

- Accommodates up to 4 lines.
- Allows for up to 48 stations or phone home runs.
- For use with 110 punch or push down tool.
- Internally bridged and NO bridging clips needed.
- 8-way 2050 MHz (2GHz) splitter for CATV cable runs.

DD1X1C DD1X1 WITH COVER

DD1X1K DD1X1 WITH THE 110 PUSH DOWN TOOL.

DD1X1CK DD1X1 WITH COVER and PUSH DOWN TOOL.

DD1X1-N8 DD1X1 WITH 8 POSITION NETWORK CARD.

X1C COVER FOR DD1X1 PHONE DISTRIBUTION DEVICE.

DD1X1-FD 10 DD1X1 IN FLOOR DISPLAY

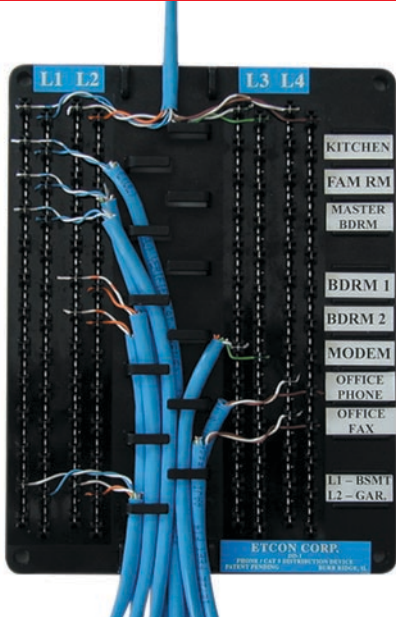
DD1X1C-FD 10 DD1X1C IN FLOOR DISPLAY



FREE Floor Display
See back cover for details



VOICE - DATA - VIDEO



DD1 PHONE DISTRIBUTION DEVICE FOR RESIDENTIAL AND SOHO PHONE INSTALLATIONS.

- Accommodates up to 4 lines.
- 12 outlets/stations per line.
- No bridging clips required.
- For use with Cat. 5E/5/3 phone wire.
- For use with 110 punch or push down tool.

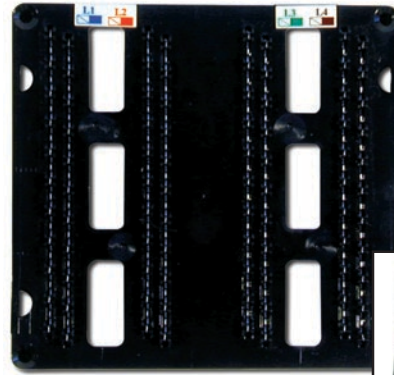
DD1K DD1 WITH THE DD110T PUSH DOWN TOOL.

1C COVER FOR DD1 PHONE DISTRIBUTION DEVICE.

DD1C DD1 AND COVER COMBO.

DD1CK DD1, COVER, AND THE DD110T PUSH DOWN TOOL.

DD1-FD 10 DD1 IN FLOOR DISPLAY



DD3 PHONE DISTRIBUTION DEVICE FOR RESIDENTIAL AND SOHO PHONE INSTALLATIONS.

- Accommodates up to 4 lines.
- 10 outlets/stations per line.
- No bridging clips required.
- Designed to be wired from the back for clean, organized appearance.
- For use with 110 punch or push down tool.

DD3K DD3 WITH THE DD110T PUSH DOWN TOOL.

3C COVER FOR DD3 PHONE DISTRIBUTION DEVICE.

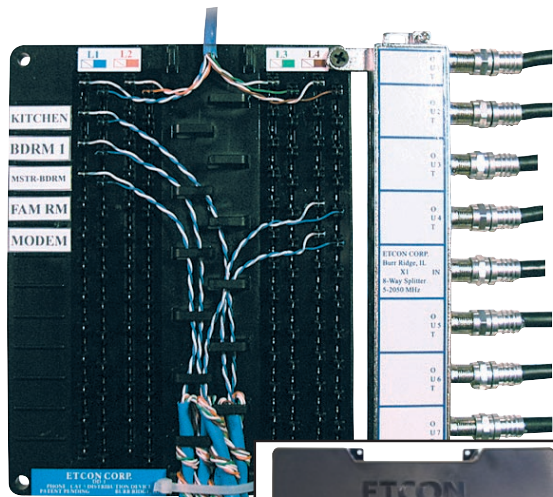
DD3C DD3 AND COVER COMBO.

DD3CK DD3, COVER, AND THE DD110T PUSH DOWN TOOL

DD3CX DD3, COVER, AND 4 WAY VIDEO SPLITTER.

DD3CXNS DD3, 4-WAY VIDEO SPLITTER, DATA NETWORK, SECURITY AND COVER COMBO.

DD3-FD 10 DD3 IN FLOOR DISPLAY



DD1X1 PHONE DISTRIBUTION DEVICE WITH 8-WAY 2050 MHZ (2GHZ) SPLITTER FOR RESIDENTIAL AND SOHO PHONE AND VIDEO INSTALLATIONS.

- Accommodates up to 4 lines.
- Allows for up to 48 stations or phone home runs.
- For use with 110 punch or push down tool.
- Internally bridged and NO bridging clips needed.
- 8-way 2050 MHz (2GHz) splitter for CATV cable runs.

DD1X1C DD1X1 WITH COVER

DD1X1K DD1X1 WITH THE 110 PUSH DOWN TOOL.

DD1X1CK DD1X1 WITH COVER and PUSH DOWN TOOL.

DD1X1-N8 DD1X1 WITH 8 POSITION NETWORK CARD.

X1C COVER FOR DD1X1 PHONE DISTRIBUTION DEVICE.

DD1X1-FD 10 DD1X1 IN FLOOR DISPLAY

DD1X1C-FD 10 DD1X1C IN FLOOR DISPLAY



FREE Floor Display
See back cover for details



= Display Pack with **FREE** Floor Display