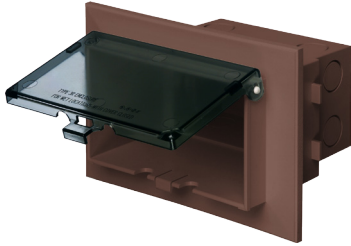


Low Profile IN BOX™ for New Brick Construction

IN BOX™



DBHB1C



DBHB1BR

Recessed electrical box with weatherproof-in-use cover for new brick construction. Non-metallic cover and base. Accepts most single gang wiring devices and uses standard indoor wall plates or a GFCI cover plate. Box and white cover are textured/paintable. UV rated plastic for long outdoor life.

FEATURES AND BENEFITS

- IN BOX's one-piece assembly replaces the installation of an electrical box, siding block, and bubble cover assembly
- Built-in anchor tabs seat IN BOX sleeve into mortar for a super secure installation
- Installs in the wall, so less of it shows outside
- Installed, disposable, mud cover extends all the way over the flange, providing maximum protection during construction
- Install option: Cover is removable for easier device installation
- No gaskets required

CATALOG NUMBER	UPC/DCI/NAED MFG #018997	ORIENTATION/COVER COLOR	UNIT	STD PKG	DIM A	DIM B	DIM C	DIM D	DIM E
DBHB1C	77628	Horizontal/Clear	1	4	4.934	7.186	5.160	1.313	3.847
DBHB1W	77630	Horizontal/White	1	4	4.934	7.186	5.160	1.313	3.847
DBHB1BR	77669	Horizontal/Brown	1	4	4.934	7.186	5.160	1.313	3.847
DBHB1BRC	77670	Horizontal/Clear	1	4	4.934	7.186	5.160	1.313	3.847

Add suffix "GC" to Catalog # when ordering in Canada, for example DBHB1CGC.

Replacement covers available on page K-17.

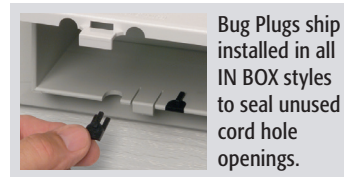
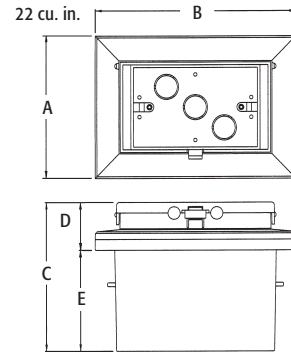
PATENTED. ADDITIONAL PATENTS PENDING.

Note: Meets 2015 CEC (Rule 26-702), NEMA 3R, NEC 406.9 (b); Where a weatherproof-in-use cover is required for 15 or 20 AMP receptacles installed outdoors.



WEATHERPROOF-IN-USE

EXTRA-DUTY



Bug Plugs ship installed in all IN BOX styles to seal unused cord hole openings.

In Box for new brick includes...

Box with weatherproof-in-use extra-duty cover, installed bug plugs, (1) standard duplex, (1) standard GFCI face plate, installation screws, (1) NM cable connector, and an in-place, disposable mud cover.

Scan For Video



INSTALLATION INSTRUCTIONS



Oversized, installed mud cover offers maximum protection because it extends over the entire flange.



Completed installation with weatherproof-in-use extra-duty cover. DBHB1BRC shown.

Low Profile IN BOX™ for New Brick Construction

IN BOX™



DBHB1C



DBHB1BR

Recessed electrical box with weatherproof-in-use cover for new brick construction. Non-metallic cover and base. Accepts most single gang wiring devices and uses standard indoor wall plates or a GFCI cover plate. Box and white cover are textured/paintable. UV rated plastic for long outdoor life.

FEATURES AND BENEFITS

- IN BOX's one-piece assembly replaces the installation of an electrical box, siding block, and bubble cover assembly
- Built-in anchor tabs seat IN BOX sleeve into mortar for a super secure installation
- Installs in the wall, so less of it shows outside
- Installed, disposable, mud cover extends all the way over the flange, providing maximum protection during construction
- Install option: Cover is removable for easier device installation
- No gaskets required

CATALOG NUMBER	UPC/DCI/NAED MFG #018997	ORIENTATION/COVER COLOR	UNIT	STD PKG	DIM A	DIM B	DIM C	DIM D	DIM E
DBHB1C	77628	Horizontal/Clear	1	4	4.934	7.186	5.160	1.313	3.847
DBHB1W	77630	Horizontal/White	1	4	4.934	7.186	5.160	1.313	3.847
DBHB1BR	77669	Horizontal/Brown	1	4	4.934	7.186	5.160	1.313	3.847
DBHB1BRC	77670	Horizontal/Clear	1	4	4.934	7.186	5.160	1.313	3.847

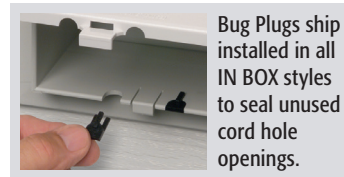
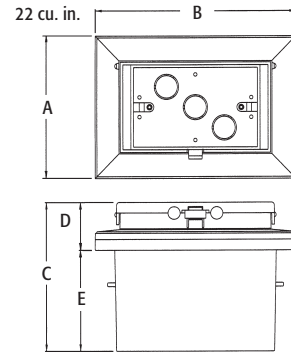
Add suffix "GC" to Catalog # when ordering in Canada, for example DBHB1CGC.
Replacement covers available on page K-17.

PATENTED. ADDITIONAL PATENTS PENDING.

Note: Meets 2015 CEC (Rule 26-702), NEMA 3R, NEC 406.9 (b); Where a weatherproof-in-use cover is required for 15 or 20 AMP receptacles installed outdoors.



WEATHERPROOF-IN-USE
EXTRA-DUTY



Bug Plugs ship installed in all IN BOX styles to seal unused cord hole openings.

In Box for new brick includes...

Box with weatherproof-in-use extra-duty cover, installed bug plugs, (1) standard duplex, (1) standard GFCI face plate, installation screws, (1) NM cable connector, and an in-place, disposable mud cover.

Scan For Video



INSTALLATION INSTRUCTIONS



Oversized, installed mud cover offers maximum protection because it extends over the entire flange.



Completed installation with weatherproof-in-use extra-duty cover. DBHB1BRC shown.