

## Quick-Connect

### Adapters and couplings



Coupling



Threaded adapter



Snap-in adapter

#### Features and benefits:

- Carlon® one-piece ENT Quick-Connect couplings, threaded adapters and snap-in terminator adapters are suitable for damp locations
- Quick-Connect couplings and threaded adapters are concrete-tight when used with Carlon® ENT
- All sizes of rigid non-metallic conduit fittings are compatible with ENT when using ENT cement
- Rigid non-metallic conduit fittings are recommended for use with Carlon® 1<sup>1</sup>/<sub>4</sub>"-2" Flex-Plus® Blue™ ENT
- Use of ENT Blue™ Quick-set cement is required. See page A-338 for details
- When one-piece Quick-Connect snap-in terminator adapters are installed in a concrete application, Carlon® flat sealing washers must be used on the box connection ends

#### Couplings

Cat. No.	Size (in.)	Std. Ctn.	Std. Wt. (lbs.)
A240D	1/2	150	2.90
A240E	3/4	100	3.00
A240F	1	50	2.30

#### Threaded adapters

Cat. No.	Size (in.)	Std. Ctn.	Std. Wt. (lbs.)
A243D	1/2	150	2.55
A243E	3/4	100	2.30
A243F	1	50	2.00

#### Snap-in adapters

Cat. No.	Size (in.)	Std. Ctn.	Std. Wt. (lbs.)
A253D	1/2	150	2.70
A253E	3/4	100	2.90
A253F	1	50	2.30

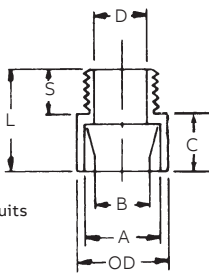


## Rigid non-metallic

### Conduit adapters and couplings



For adapting non-metallic conduits to boxes, threaded fittings, metallic systems. Male threads on one end, socket end on other.



#### Male terminal adapters

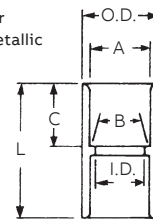
Cat. No.	Size	Std. Ctn.	Typical			Min. D	Max. OD	Typical			Std. Wt. (lbs.)
			A	B	C			S	L		
E943D	1/2	150	.852	.836	.597	1 <sup>1</sup> / <sub>8</sub>	5/8	9/16	1 <sup>5</sup> / <sub>16</sub>	2.8	
E943E	3/4	125	1.064	1.046	.800	1 <sup>1</sup> / <sub>2</sub>	3/4	9/16	1 <sup>3</sup> / <sub>8</sub>	3.5	
E943F	1	50	1.330	1.310	1.018	1 <sup>5</sup> / <sub>8</sub>	1	1 <sup>1</sup> / <sub>16</sub>	1 <sup>25</sup> / <sub>32</sub>	3	
E943G	1 <sup>1</sup> / <sub>4</sub>	50	1.677	1.655	1.332	2 <sup>1</sup> / <sub>32</sub>	1	3/4	1 <sup>15</sup> / <sub>16</sub>	4	
E943H	1 <sup>1</sup> / <sub>2</sub>	25	1.918	1.894	1.566	2 <sup>5</sup> / <sub>32</sub>	1 <sup>3</sup> / <sub>16</sub>	3/4	2 <sup>1</sup> / <sub>16</sub>	2.5	
E943J	2	50	2.393	2.369	2.000	2 <sup>21</sup> / <sub>32</sub>	1 <sup>3</sup> / <sub>16</sub>	3/4	2 <sup>1</sup> / <sub>8</sub>	7	

\*All measurements in inches, unless otherwise noted.

All socket fittings should be attached using ENT Blue™ Quick-Set Cement (page A-338). Using Carlon® fittings with Carlon® non-metallic conduit ensures system integrity.



Socket type for joining non-metallic conduit.



#### Standard couplings

Cat. No.	Size	Std. Ctn.	Typical			Min. D	Max. OD	Typical			Std. Wt. (lbs.)
			A	B	C			L			
E940D	1/2	150	.852	.836	.728	1 <sup>7</sup> / <sub>64</sub>	1 <sup>1</sup> / <sub>16</sub>	1 <sup>1</sup> / <sub>2</sub>	2.8		
E940E	3/4	100	1.064	1.046	.840	1 <sup>5</sup> / <sub>16</sub>	3/4	1 <sup>5</sup> / <sub>8</sub>	3.5		
E940F	1	50	1.330	1.310	1.210	1 <sup>5</sup> / <sub>8</sub>	1 <sup>15</sup> / <sub>16</sub>	2	3		
E940G	1 <sup>1</sup> / <sub>4</sub>	30	1.677	1.655	1.535	1 <sup>63</sup> / <sub>64</sub>	1	2 <sup>1</sup> / <sub>8</sub>	4		
E940H	1 <sup>1</sup> / <sub>2</sub>	25	1.918	1.894	1.755	2 <sup>15</sup> / <sub>64</sub>	1 <sup>1</sup> / <sub>8</sub>	2 <sup>3</sup> / <sub>8</sub>	2.5		
E940J	2	30	2.393	2.369	2.190	2 <sup>47</sup> / <sub>64</sub>	1 <sup>3</sup> / <sub>16</sub>	2 <sup>1</sup> / <sub>2</sub>	7		

\*All measurements in inches, unless otherwise noted.

## Quick-Connect

### Adapters and couplings



Coupling



Threaded adapter



Snap-in adapter

#### Features and benefits:

- Carlon® one-piece ENT Quick-Connect couplings, threaded adapters and snap-in terminator adapters are suitable for damp locations
- Quick-Connect couplings and threaded adapters are concrete-tight when used with Carlon® ENT
- All sizes of rigid non-metallic conduit fittings are compatible with ENT when using ENT cement
- Rigid non-metallic conduit fittings are recommended for use with Carlon® 1<sup>1</sup>/<sub>4</sub>"-2" Flex-Plus® Blue™ ENT
- Use of ENT Blue™ Quick-set cement is required. See page A-338 for details
- When one-piece Quick-Connect snap-in terminator adapters are installed in a concrete application, Carlon® flat sealing washers must be used on the box connection ends

#### Couplings

Cat. No.	Size (in.)	Std. Ctn.	Std. Wt. (lbs.)
A240D	1/2	150	2.90
A240E	3/4	100	3.00
A240F	1	50	2.30

#### Threaded adapters

Cat. No.	Size (in.)	Std. Ctn.	Std. Wt. (lbs.)
A243D	1/2	150	2.55
A243E	3/4	100	2.30
A243F	1	50	2.00

#### Snap-in adapters

Cat. No.	Size (in.)	Std. Ctn.	Std. Wt. (lbs.)
A253D	1/2	150	2.70
A253E	3/4	100	2.90
A253F	1	50	2.30

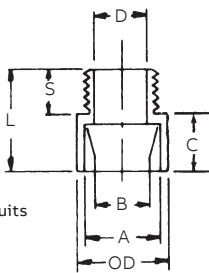


## Rigid non-metallic

### Conduit adapters and couplings



For adapting non-metallic conduits to boxes, threaded fittings, metallic systems. Male threads on one end, socket end on other.



#### Male terminal adapters

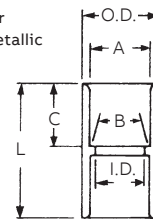
Cat. No.	Size	Std. Ctn.	Typical			Min. D	Max. OD	Typical			Std. Wt. (lbs.)
			A	B	C			S	L		
E943D	1/2	150	.852	.836	.597	1 <sup>1</sup> / <sub>8</sub>	5/8	9/16	1 <sup>5</sup> / <sub>16</sub>	2.8	
E943E	3/4	125	1.064	1.046	.800	1 <sup>1</sup> / <sub>2</sub>	3/4	9/16	1 <sup>3</sup> / <sub>8</sub>	3.5	
E943F	1	50	1.330	1.310	1.018	1 <sup>5</sup> / <sub>8</sub>	1	1 <sup>1</sup> / <sub>16</sub>	1 <sup>25</sup> / <sub>32</sub>	3	
E943G	1 <sup>1</sup> / <sub>4</sub>	50	1.677	1.655	1.332	2 <sup>1</sup> / <sub>32</sub>	1	3/4	1 <sup>15</sup> / <sub>16</sub>	4	
E943H	1 <sup>1</sup> / <sub>2</sub>	25	1.918	1.894	1.566	2 <sup>5</sup> / <sub>32</sub>	1 <sup>3</sup> / <sub>16</sub>	3/4	2 <sup>1</sup> / <sub>16</sub>	2.5	
E943J	2	50	2.393	2.369	2.000	2 <sup>21</sup> / <sub>32</sub>	1 <sup>3</sup> / <sub>16</sub>	3/4	2 <sup>1</sup> / <sub>8</sub>	7	

\*All measurements in inches, unless otherwise noted.

All socket fittings should be attached using ENT Blue™ Quick-Set Cement (page A-338). Using Carlon® fittings with Carlon® non-metallic conduit ensures system integrity.



Socket type for joining non-metallic conduit.



#### Standard couplings

Cat. No.	Size	Std. Ctn.	Typical			Min. D	Max. OD	Typical			Std. Wt. (lbs.)
			A	B	C			L			
E940D	1/2	150	.852	.836	.728	1 <sup>7</sup> / <sub>64</sub>	1 <sup>1</sup> / <sub>16</sub>	1 <sup>1</sup> / <sub>2</sub>	2.8		
E940E	3/4	100	1.064	1.046	.840	1 <sup>5</sup> / <sub>16</sub>	3/4	1 <sup>5</sup> / <sub>8</sub>	3.5		
E940F	1	50	1.330	1.310	1.210	1 <sup>5</sup> / <sub>8</sub>	1 <sup>15</sup> / <sub>16</sub>	2	3		
E940G	1 <sup>1</sup> / <sub>4</sub>	30	1.677	1.655	1.535	1 <sup>63</sup> / <sub>64</sub>	1	2 <sup>1</sup> / <sub>8</sub>	4		
E940H	1 <sup>1</sup> / <sub>2</sub>	25	1.918	1.894	1.755	2 <sup>15</sup> / <sub>64</sub>	1 <sup>1</sup> / <sub>8</sub>	2 <sup>3</sup> / <sub>8</sub>	2.5		
E940J	2	30	2.393	2.369	2.190	2 <sup>47</sup> / <sub>64</sub>	1 <sup>3</sup> / <sub>16</sub>	2 <sup>1</sup> / <sub>2</sub>	7		

\*All measurements in inches, unless otherwise noted.