



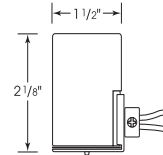
# Medium Base Lampholders

## Porcelain—Pre-Wired Sockets

SOCKETS & LAMP HOLDERS

### Keyless Porcelain Socket w/Side Mount Bushing

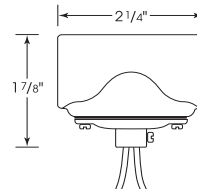
Cat No.	Leads	Cap	Screw Shell	Master
80-1330	9" AWM B/W 150°	1/8 IPS	CSSNP	100/10
80-1445	12" AWM B/W 105°	1/8 IPS	CSSNP	200/10
80-1329	36" - 18/2 SPT-2 105° Clear Gold	1/8 IPS	CSSNP	100/10



**80-1330**  
Glazed  
660W-250V

### Twin Porcelain Socket w/Flange Bushing Cap

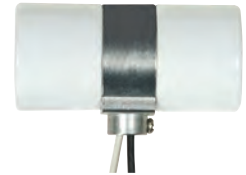
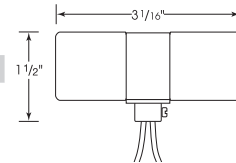
Cat No.	Leads	Cap	Screw Shell	Master
80-1314	9" AWM B/W 150°	1/8 IPS	CSSNP	100/10



**80-1314**  
Glazed  
660W-250V

### Twin Porcelain Socket w/Top Bracket Pre-Wired

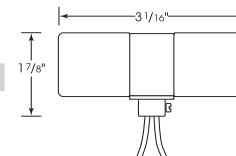
Cat No.	Leads	Cap	Screw Shell	Master
80-2492	9" AWM B/W 150°	1/8 IPS	CSSNP	100/10



**80-2492**  
Glazed  
660W-250V

### Twin 2 Circuit-3 Wire Porcelain Socket w/Single 1/8 IP Bushing

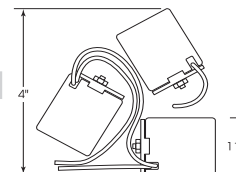
Cat No.	Leads	Cap	Screw Shell	Master
80-1081	24" AWM 150°	1/8 IPS	CSSNP	100/10



**80-1081**  
Glazed  
660W-250V

### Three Light Porcelain Socket w/ 1/8 IP Slip Hole w/Metal Strap

Cat No.	Leads	Screw Shell	Master
80-1082	24" AWM 150°	Aluminum	100 Bulk



**80-1082**  
Glazed  
660W-250V



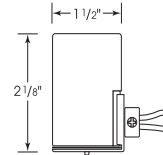
# Medium Base Lampholders

## Porcelain—Pre-Wired Sockets

SOCKETS & LAMP HOLDERS

### Keyless Porcelain Socket w/Side Mount Bushing

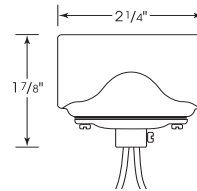
Cat No.	Leads	Cap	Screw Shell	Master
80-1330	9" AWM B/W 150°	1/8 IPS	CSSNP	100/10
80-1445	12" AWM B/W 105°	1/8 IPS	CSSNP	200/10
80-1329	36" - 18/2 SPT-2 105° Clear Gold	1/8 IPS	CSSNP	100/10



**80-1330**  
Glazed  
660W-250V

### Twin Porcelain Socket w/Flange Bushing Cap

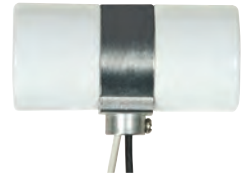
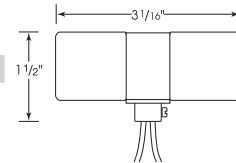
Cat No.	Leads	Cap	Screw Shell	Master
80-1314	9" AWM B/W 150°	1/8 IPS	CSSNP	100/10



**80-1314**  
Glazed  
660W-250V

### Twin Porcelain Socket w/Top Bracket Pre-Wired

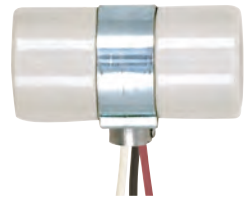
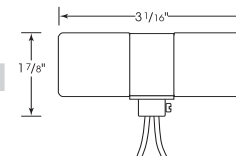
Cat No.	Leads	Cap	Screw Shell	Master
80-2492	9" AWM B/W 150°	1/8 IPS	CSSNP	100/10



**80-2492**  
Glazed  
660W-250V

### Twin 2 Circuit-3 Wire Porcelain Socket w/Single 1/8 IP Bushing

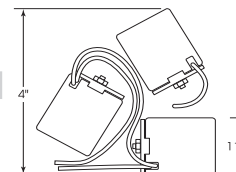
Cat No.	Leads	Cap	Screw Shell	Master
80-1081	24" AWM 150°	1/8 IPS	CSSNP	100/10



**80-1081**  
Glazed  
660W-250V

### Three Light Porcelain Socket w/ 1/8 IP Slip Hole w/Metal Strap

Cat No.	Leads	Screw Shell	Master
80-1082	24" AWM 150°	Aluminum	100 Bulk



**80-1082**  
Glazed  
660W-250V