

# Electrical Metallic Tubing (EMT) & True Color<sup>TM</sup> EMT



Quality Electrical Metal Tubing



Identify Important Circuits Instantly

## E-Z Pull<sup>®</sup> EMT

- Hot galvanized steel using patented in-line Flo-Coat<sup>®</sup> process for long lasting exterior protection
- E-Z Pull<sup>®</sup> interior coating provides a smooth raceway for fast, easier wire-pulling
- Excellent mechanical protection for conductors
- Ductility for faster and easier bending
- Optimal EMI shielding characteristics
- Listed to Safety Standard UL 797
- Manufactured in accordance with ANSI C80.3
- Available in trade sizes 1/2" (16 mm) - 4" (103 mm)
- Available in 10' and 20' lengths.

## True Color<sup>TM</sup> EMT

- All the benefits of E-Z Pull<sup>®</sup> EMT
- Instant identification of multiple circuits
- Available in 8 colors
- Available in trade sizes 1/2" (16 mm) - 1 1/2" (41 mm)
- Sizes 2 1/2" - 4" available by special order
- EMT Elbows (Available by special order)



## True Color<sup>TM</sup> Applications

### Black EMT

- Blends in dark colored areas

### Fire Alarm<sup>®</sup> EMT

- Emergency circuits
- Fire alarm and security systems

### Orange EMT

- Construction/research areas
- Fiber optic systems
- Auto repair/maintenance

### Yellow EMT

- High voltage wiring
- Caution areas
- Special equipment

### Green EMT

- Hospital and healthcare areas
- Nurse call stations
- Critical circuits

### Blue EMT

- Low voltage wiring
- Data com/video
- Network security

### Purple EMT

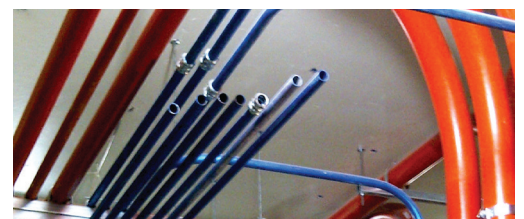
- Specialty wiring systems
- Security systems

### White EMT

- Blends in light colored areas

### Silver EMT

- Standard Use
- Contemporary architecture



# Electrical Metallic Tubing (EMT) & True Color™ EMT

## FEATURES & SPECIFICATIONS

### Manufactured for Long Life

Allied Tube & Conduit® EMT is precision manufactured from high grade mild strip steel for exceptional durability and long-lasting life. Allied Tube & Conduit® EMT is hot galvanized using a patented in-line Flo-Coat® process. This process combines zinc, a conversion coating, and a clear organic polymer topcoat to form a triple layer of protection against corrosion and abrasion.

E-Z Pull® EMT combines strength with ductility, providing easy bending, cutting and joining while resisting flattening, kinking and splitting. Available in trade sizes of ½" (16 mm) – 4" (103 mm) as well as 10' and 20' lengths.

### Coatings

Allied Tube & Conduit® EMT has a special low friction ID coating called E-Z Pull® that greatly improves the slip properties between conduit and wire. With E-Z Pull® EMT, wire pulls through the EMT smoothly and easily, making installation easier and faster.

### EMI Shielding

Allied Tube & Conduit® EMT is effective in reducing electromagnetic field levels for encased power distribution circuits, shielding computers and other sensitive electronic equipment from the effects of electromagnetic interference.

### Codes & Standards Compliance

Allied Tube & Conduit® EMT is listed to Safety Standard UL 797 and is manufactured in accordance with ANSI C80.3. These standards have been adopted as Federal Specifications in lieu of WWC 563. EMT is recognized as an equipment grounding conductor by NEC® Section 250.118. Installation of EMT shall be in accordance with the National Electrical Code® (NEC®) and the UL listing information. Allied Tube & Conduit® EMT is listed in category FJMX. Master bundles conform to NEMA Standard RN 2.

### Specification Data

To specify Allied Tube & Conduit® EMT, include the following: Electrical Metallic Tubing shall be equal to that manufactured by Allied Tube & Conduit®. EMT shall be hot galvanized steel OD with an organic corrosion resistant ID coating, and shall be listed to UL Safety Standard 797 and manufactured in accordance with ANSI C80.3.

## Electrical Metallic Tubing (EMT) and True Color™ EMT

Listed to Safety Standard UL 797

Manufactured in accordance with ANSI C80.3



Trade Size		Outside Diameter <sup>1</sup>		Nominal Wall Thickness		Approx Weight Per Ft. (.305M)		Galvanized Bundle Quantity		True Color™ Bundle Quantity		Primary Bundle Quantity		20' EMT Bundle Quantity	
(in)	(mm)	(in)	(mm)	(in)	(mm)	(lb)	(kg)	(ft)	(m)	(ft)	(m)	(ft)	(m)	(ft)	(m)
½"	16	0.706	17.93	0.042	1.07	0.30	0.136	7000	2135	2500	762	100	30.5	3380	1030.22
¾"	21	0.922	23.42	0.049	1.24	0.46	0.209	5000	1525	2000	609.6	100	30.5	2540	744.20
1"	27	1.163	29.54	0.057	1.45	0.67	0.304	3000	915	1000	304.8	100	30.5	2000	609.60
1¼"	35	1.510	38.35	0.065	1.65	1.01	0.458	2000	610	500	152.4	50	15.2	1220	371.85
1½"	41	1.740	44.20	0.065	1.65	1.16	0.526	1500	457.5	500	152.4	50	15.2	740	225.55
2"	53	2.197	55.80	0.065	1.65	1.48	0.671	1200	366	610	185.9	-	-	740	225.55
2½"	63	2.875	73.03	0.072	1.83	2.16	0.980	610	186.1	370	112.7	-	-	380	115.82
3"	78	3.500	88.90	0.072	1.83	2.63	1.193	510	155.6	200	61	-	-	380	115.82
3½"	91	4.000	101.60	0.083	2.11	3.49	1.583	370	112.9	100	30.5	-	-	380	115.82
4"	103	4.500	114.30	0.083	2.11	3.93	1.783	300	91.5	100	30.5	-	-	200	60.96

1 +/- 0.005" (.13 mm) for trade sizes ½" to 2"  
 +/- 0.010" (.25 mm) for trade sizes 2½"  
 +/- 0.015" (.38 mm) for trade sizes 3"  
 +/- 0.020" (.51 mm) for trade sizes 3½" & 4"

NOTE: Length = 10ft (3.05m) +/- .25" (6.35mm)

# Electrical Metallic Tubing (EMT) & True Color<sup>TM</sup> EMT



Quality Electrical Metal Tubing



Identify Important Circuits Instantly

## E-Z Pull<sup>®</sup> EMT

- Hot galvanized steel using patented in-line Flo-Coat<sup>®</sup> process for long lasting exterior protection
- E-Z Pull<sup>®</sup> interior coating provides a smooth raceway for fast, easier wire-pulling
- Excellent mechanical protection for conductors
- Ductility for faster and easier bending
- Optimal EMI shielding characteristics
- Listed to Safety Standard UL 797
- Manufactured in accordance with ANSI C80.3
- Available in trade sizes 1/2" (16 mm) - 4" (103 mm)
- Available in 10' and 20' lengths.

## True Color<sup>TM</sup> EMT

- All the benefits of E-Z Pull<sup>®</sup> EMT
- Instant identification of multiple circuits
- Available in 8 colors
- Available in trade sizes 1/2" (16 mm) - 1 1/2" (41 mm)
- Sizes 2 1/2" - 4" available by special order
- EMT Elbows (Available by special order)



## True Color<sup>TM</sup> Applications

### Black EMT

- Blends in dark colored areas

### Fire Alarm<sup>®</sup> EMT

- Emergency circuits
- Fire alarm and security systems

### Orange EMT

- Construction/research areas
- Fiber optic systems
- Auto repair/maintenance

### Yellow EMT

- High voltage wiring
- Caution areas
- Special equipment

### Green EMT

- Hospital and healthcare areas
- Nurse call stations
- Critical circuits

### Blue EMT

- Low voltage wiring
- Data com/video
- Network security

### Purple EMT

- Specialty wiring systems
- Security systems

### White EMT

- Blends in light colored areas

### Silver EMT

- Standard Use
- Contemporary architecture



# Electrical Metallic Tubing (EMT) & True Color™ EMT

## FEATURES & SPECIFICATIONS

### Manufactured for Long Life

Allied Tube & Conduit® EMT is precision manufactured from high grade mild strip steel for exceptional durability and long-lasting life. Allied Tube & Conduit® EMT is hot galvanized using a patented in-line Flo-Coat® process. This process combines zinc, a conversion coating, and a clear organic polymer topcoat to form a triple layer of protection against corrosion and abrasion.

E-Z Pull® EMT combines strength with ductility, providing easy bending, cutting and joining while resisting flattening, kinking and splitting. Available in trade sizes of ½" (16 mm) – 4" (103 mm) as well as 10' and 20' lengths.

### Coatings

Allied Tube & Conduit® EMT has a special low friction ID coating called E-Z Pull® that greatly improves the slip properties between conduit and wire. With E-Z Pull® EMT, wire pulls through the EMT smoothly and easily, making installation easier and faster.

### EMI Shielding

Allied Tube & Conduit® EMT is effective in reducing electromagnetic field levels for encased power distribution circuits, shielding computers and other sensitive electronic equipment from the effects of electromagnetic interference.

### Codes & Standards Compliance

Allied Tube & Conduit® EMT is listed to Safety Standard UL 797 and is manufactured in accordance with ANSI C80.3. These standards have been adopted as Federal Specifications in lieu of WWC 563. EMT is recognized as an equipment grounding conductor by NEC® Section 250.118. Installation of EMT shall be in accordance with the National Electrical Code® (NEC®) and the UL listing information. Allied Tube & Conduit® EMT is listed in category FJMX. Master bundles conform to NEMA Standard RN 2.

### Specification Data

To specify Allied Tube & Conduit® EMT, include the following: Electrical Metallic Tubing shall be equal to that manufactured by Allied Tube & Conduit®. EMT shall be hot galvanized steel OD with an organic corrosion resistant ID coating, and shall be listed to UL Safety Standard 797 and manufactured in accordance with ANSI C80.3.

## Electrical Metallic Tubing (EMT) and True Color™ EMT

Listed to Safety Standard UL 797

Manufactured in accordance with ANSI C80.3



Trade Size		Outside Diameter <sup>1</sup>		Nominal Wall Thickness		Approx Weight Per Ft. (.305M)		Galvanized Bundle Quantity		True Color™ Bundle Quantity		Primary Bundle Quantity		20' EMT Bundle Quantity	
(in)	(mm)	(in)	(mm)	(in)	(mm)	(lb)	(kg)	(ft)	(m)	(ft)	(m)	(ft)	(m)	(ft)	(m)
½"	16	0.706	17.93	0.042	1.07	0.30	0.136	7000	2135	2500	762	100	30.5	3380	1030.22
¾"	21	0.922	23.42	0.049	1.24	0.46	0.209	5000	1525	2000	609.6	100	30.5	2540	744.20
1"	27	1.163	29.54	0.057	1.45	0.67	0.304	3000	915	1000	304.8	100	30.5	2000	609.60
1¼"	35	1.510	38.35	0.065	1.65	1.01	0.458	2000	610	500	152.4	50	15.2	1220	371.85
1½"	41	1.740	44.20	0.065	1.65	1.16	0.526	1500	457.5	500	152.4	50	15.2	740	225.55
2"	53	2.197	55.80	0.065	1.65	1.48	0.671	1200	366	610	185.9	-	-	740	225.55
2½"	63	2.875	73.03	0.072	1.83	2.16	0.980	610	186.1	370	112.7	-	-	380	115.82
3"	78	3.500	88.90	0.072	1.83	2.63	1.193	510	155.6	200	61	-	-	380	115.82
3½"	91	4.000	101.60	0.083	2.11	3.49	1.583	370	112.9	100	30.5	-	-	380	115.82
4"	103	4.500	114.30	0.083	2.11	3.93	1.783	300	91.5	100	30.5	-	-	200	60.96

1 +/- 0.005" (.13 mm) for trade sizes ½" to 2"  
 +/- 0.010" (.25 mm) for trade sizes 2½"  
 +/- 0.015" (.38 mm) for trade sizes 3"  
 +/- 0.020" (.51 mm) for trade sizes 3½" & 4"

NOTE: Length = 10ft (3.05m) +/- .25" (6.35mm)