



SERVICE DROP CABLE

APPLICATION: *DUPLEX:* To supply 120 volts aerial service for temporary service at construction sites, outdoor or street lighting. For service at 600 volts or lower at conductor temperatures not to exceed 75°C for polyethylene insulated conductors or 90°C for crosslinked polyethylene (XLP) insulated conductors.

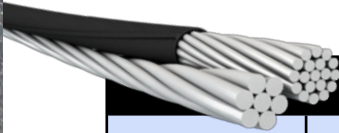
TRIPLEX: To supply power from the utility's lines to the consumer's weatherhead. For service at 600 volts or less (phase to phase) at a conductor temperature of 75°C maximum for polyethylene insulation or 90°C maximum for crosslinked polyethylene (XLP) insulated conductors.

QUADRUPLEX: Used to supply 3 phase power, usually from a pole mounted transformer to the user's service head where connection to the service entrance cable is made. To be used at voltages of 600 volts or less phase to phase and at conductor temperatures not to exceed 75°C for polyethylene insulated conductors or 90°C for crosslinked polyethylene (XLP) insulated conductors.

PRODUCT FEATURES: Conductors are concentrically stranded, compressed 1350-H19 aluminum. Insulated with either polyethylene or XLP crosslinked polyethylene. Neutral messengers are concentrically stranded 6201, AAC or ACSR.

STANDARDS: Service drop cable meets or exceeds the following ASTM specifications:

- **B-230** Aluminum Wire, 1350-H19 for Electrical Purposes
- **B-231** Aluminum Conductors, Concentric-Lay-Stranded
- **B-232** Aluminum Conductors, Concentric-Lay-Stranded, Coated Steel Reinforced (ACSR)
- **B-399** Concentric-Lay-Stranded, 6201-T81 Aluminum Alloy Conductors
- **B-901** Compressed Round Stranded Aluminum Conductors Using Single Input Wire
- **ANSI/ICEA S-76-474**



KINGWIRE Duplex Service Drop - Aluminum Conductor AAC

Code Word	Phase Conductors			Bare Neutral			Weight per 1000 (lbs)		Rating (AMPS)	
	Size AWG	Strand	Insulation Thickness (MLS)	Size AWG	Strand	Breaking Strength (lbs)	XLP	Poly	XLP	Poly
Peakingese	6	Solid	45	6	7/w	563	63.5	61.7	85	70
Collie	6	7/w	45	6	7/w	563	66.8	63.1	85	70
Dachshund	4	Solid	45	4	7/w	881	95.5	93.4	110	90
Spaniel	4	7/w	45	4	7/w	881	100.5	95.4	110	90
Doberman	2	7/w	45	2	7/w	1,350	152.7	145.7	150	120
Malamute	1/0	19/w	60	1/0	7/w	1,990	242.6	234.2	205	160

KINGWIRE Duplex Service Drop - Aluminum Conductor ACSR - Neutral Messenger

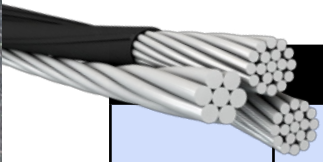
Code Word	Phase Conductors			Bare Neutral			Weight per 1000 (lbs)		Rating (AMPS)	
	Size AWG	Strand	Insulation Thickness (MLS)	Size AWG	Strand	Breaking Strength (lbs)	XLP	Poly	XLP	Poly
Setter	6	Solid	45	6	6/1	1,190	75.0	73.2	85	70
Shepherd	6	7/w	45	6	6/1	1,190	78.3	74.6	85	70
Eskimo	4	Solid	45	4	6/1	1,860	113.7	111.6	110	90
Terrier	4	7/w	45	4	6/1	1,860	118.7	113.6	110	90
Chow	2	7/w	45	2	6/1	2,850	181.7	174.7	150	120
Bull	1/0	19/w	60	1/0	6/1	4,380	288.7	280.3	200	160

KINGWIRE Duplex Service Drop - Aluminum Conductor AAAC - Alloy Neutral Messenger

Code Word	Phase Conductors			Bare Neutral			Weight per 1000 (lbs)		Rating (AMPS)	
	Size AWG	Strand	Insulation Thickness (MLS)	Size AWG	Strand	Breaking Strength (lbs)	XLP	Poly	XLP	Poly
Chihuahua	6	Solid	45	6	7/w	1,110	67.6	65.8	85	70
Vizsla	6	7/w	45	6	7/w	1,110	70.9	67.2	85	70
Harrier	4	Solid	45	4	7/w	1,760	102.0	99.9	110	90
Whippet	4	7/w	45	4	7/w	1,760	107.0	101.9	110	90
Schnauzer	2	7/w	45	2	7/w	2,800	163.3	156.2	150	120
Heeler	1/0	19/w	60	1/0	7/w	4,460	259.2	250.8	200	160

* Note: Designated sizes are ACSR 6/1 diameter equivalent resistivity per ASTM-B-399 for 6201. Conductor temperature of 90°C for XLP, 75°C for Poly; ambient temperatures of 40°C; emissivity 0.9; 2ft/sec. wind in sun.

** To determine current ampacity by conductor size, please consult The National Electric Code, latest edition. The data is approximate and subject to normal manufacturing tolerances.



KINGWIRE Triplex Service Drop - AAAC-Alloy Neutral Messenger

Code Word	Phase Conductors			Bare Neutral			Weight per 1000 (lbs)		Rating (AMPS)	
	Size AWG	Strand	Insulation Thickness (MLS)	Size AWG	Strand	Breaking Strength (lbs)	XLP	Poly	XLP	Poly
Minex	6	Solid	45	6	7	1,110	106.6	102.9	85	70
Hippa	6	7/w	45	6	7	1,110	107.0	105.7	85	70
Prawn	4	Solid	45	4	7	1,760	158.4	154.1	110	90
Barnacles	4	7/w	45	4	7	1,760	160.0	157.0	110	90
Shrimp	2	7/w	45	2	7	2,800	243.0	238.0	150	115
Gammarus	1/0	7/w	60	1/0	7	4,460	390.0	384.0	200	155
Leda	1/0	19/w	60	1/0	7	4,460	384.0	378.0	200	155
Dungenese	2/0	7/w	60	2/0	7	5,390	481.0	474.0	230	180
Cyclops	2/0	19/w	60	2/0	7	5,390	473.0	467.0	230	180
Flustra	3/0	19/w	60	3/0	7	6,790	596.0	589.1	260	205
Lepas	4/0	19/w	60	4/0	7	8,560	725.0	716.0	300	235

KINGWIRE Triplex Service Drop - Aluminum Conductor - AAAC - Alloy Reduced Neutral Messenger

Code Word	Phase Conductors			Bare Neutral			Weight per 1000 (lbs)		Rating (AMPS)	
	Size AWG	Strand	Insulation Thickness (MLS)	Size AWG	Strand	Breaking Strength (lbs)	XLP	Poly	XLP	Poly
Artemia	4	Solid	45	6	7	1,110	134.0	132.0	110	90
Crab	4	7/w	45	6	7	1,110	144.0	141.2	110	90
Solaster	2	7/w	45	4	7	1,760	216.0	212.6	150	115
Sandcrab	1/0	7/w	60	2	7	2,800	348.0	341.0	200	155
Echinus	1/0	19/w	60	2	7	2,800	342.0	336.0	200	155
Crayfish	2/0	7/w	60	1	7	3,530	452.6	422.5	230	180
Sipho	2/0	19/w	60	1	7	3,530	441.0	422.5	230	180
Fulgar	3/0	19/w	60	1/0	7	4,460	525.0	518.0	260	205
Arca	4/0	19/w	60	2/0	7	5,360	640.0	632.0	300	235

KINGWIRE Triplex Service Drop - Aluminum Conductor - AAC - Neutral Messenger

Code Word	Phase Conductors			Bare Neutral			Weight per 1000 (lbs)		Rating (AMPS)	
	Size AWG	Strand	Insulation Thickness (MLS)	Size AWG	Strand	Breaking Strength (lbs)	XLP	Poly	XLP	Poly
Haiotis	6	Solid	45	6	7	563	102.5	98.8	85	70
Patella	6	7/w	45	6	7	563	104.0	101.6	85	70
Fusus	4	Solid	45	4	7	881	151.9	147.6	110	90
Oyster	4	7/w	45	4	7	881	154.0	151.7	110	90
Clam	2	7/w	45	2	7	1,350	232.0	228.0	150	115
Murex	1/0	7/w	1/0	1/0	7	1,990	374.0	367.0	200	155
Purpura	1/0	19/w	1/0	1/0	7	1,990	368.0	362.0	200	155
Nassa	2/0	7/w	2/0	2/0	7	2,510	461.0	453.0	230	180
Melita	3/0	19/w	3/0	3/0	19	3,310	585.2	562.9	260	205
Portunus	4/0	19/w	4/0	4/0	19	4,020	693.0	684.0	300	235
Nannynose	336.4	19/w	336.4	336.4	19	6,146	1,111.0	1,096.0	380	290


Triplex Service Drop - Aluminum Conductor - Full Size ACSR Messenger

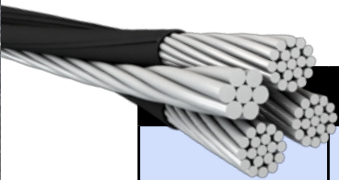
Code Word	Phase Conductors			Bare Neutral			Weight per 1000 (lbs)		Rating (AMPS)	
	Size AWG	Strand	Insulation Thickness (MLS)	Size AWG	Strand	Breaking Strength (lbs)	XLP	Poly	XLP	Poly
Paludina	6	Solid	45	6	6/1	1,190	114	113	85	70
Voluta	6	7/w	45	6	6/1	1,190	115	112	85	70
Whelk	4	Solid	45	4	6/1	1,860	163	161	110	90
Periwinkle	4	7/w	45	4	6/1	1,860	172	169	110	90
Conch	2	7/w	45	2	6/1	2,850	262	257	150	115
Neritina	1/0	7/w	60	1/0	6/1	4,380	420	414	200	115
Cenia	1/0	19/w	60	1/0	6/1	4,380	414	408	200	115
Runcina	2/0	7/w	60	2/0	6/1	5,310	519	512	230	180
Triton	2/0	19/w	60	2/0	6/1	5,310	511	505	230	180
Cherrystone	3/0	7/w	60	3/0	6/1	6,620	656	643	260	205
Mursia	3/0	19/w	60	3/0	6/1	6,620	633	626	260	205
Razor	4/0	7/w	60	4/0	6/1	8,350	814	799	300	235
Zuzara	4/0	19/w	60	4/0	6/1	8,350	785	777	300	235
Limot	336.4	19/w	80	336.4	18/1	8,680	1,160	1,147	300	290

KINGWIRE Triplex Service Drop - Aluminum Conductor - ACSR Reduced Size Messenger

Code Word	Phase Conductors			Bare Neutral			Weight per 1000 (lbs)		Rating (AMPS)	
	Size AWG	Strand	Insulation Thickness (MLS)	Size AWG	Strand	Breaking Strength (lbs)	XLP	Poly	XLP	Poly
Scallop	4	Solid	45	6	6/1	1,190	142	139	110	90
Strombus	4	7/w	45	6	6/1	1,190	151	148	110	90
Cockle	2	7/w	45	4	6/1	1,860	228	224	150	115
Janthina	1/0	7/w	60	2	6/1	2,850	367	360	200	155
Ranella	1/0	19/w	60	2	6/1	2,850	361	356	200	155
Cavolinia	2/0	7/w	60	1	6/1	3,550	452	444	230	180
Clio	2/0	19/w	60	1	6/1	3,550	444	437	230	180
Sanddollar	3/0	7/w	60	1/0	6/1	4,380	570	557	260	205
Aega	3/0	19/w	60	1/0	6/1	4,380	565	552	260	205
Cuttlefish	4/0	7/w	60	2/0	6/1	5,310	706	691	300	235
Cerapus	4/0	19/w	60	2/0	6/1	5,310	678	670	300	235
Cowry	336.4	19/w	80	4/0	6/1	8,350	1,135	1,093	380	290

* Note: Designated sizes are ACSR 6/1 diameter equivalent resistivity per ASTM-B-399 for 6201. Conductor temperature of 90°C for XLP, 75°C for Poly; ambient temperatures of 40°C; emissivity 0.9; 2ft/sec. wind in sun.

** To determine current ampacity by conductor size, please consult The National Electric Code, latest edition. The data is approximate and subject to normal manufacturing tolerances.



Quadruplex Service Drop - Aluminum Conductor AAC - Neutral Messenger

Code Word	Phase Conductors			Bare Neutral			Weight per 1000 (lbs)		Rating (AMPS)	
	Size AWG	Strand	Insulation Thickness (MLS)	Size AWG	Strand	Breaking Strength (lbs)	XLP	Poly	XLP	Poly
Clydesdale	4	Solid	45	4	7	881	208	201	100	80
Pinto	4	7/w	45	4	7	881	223	207	100	80
Mustang	2	7/w	45	2	7	1,350	333	312	135	105
Criollo	1/0	19/w	60	1/0	7	1,990	529	504	180	135
Percheron	2/0	19/w	60	2/0	7	2,510	649	620	205	155
Hanovarian	3/0	19/w	60	3/0	19	3,310	799	765	235	180
Oldenburg	4/0	19/w	60	4/0	19	4,020	986	946	270	205
Lippizaner	336.4	19/w	60	336.4	19	6,146	1,546	1,519	330	240

KINGWIRE Quadruplex Service Drop - Aluminum Conductor ACSR- Neutral Messenger

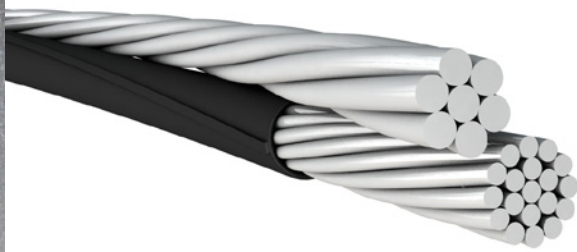
Code Word	Phase Conductors			Bare Neutral			Weight per 1000 (lbs)		Rating (AMPS)	
	Size AWG	Strand	Insulation Thickness (MLS)	Size AWG	Strand	Breaking Strength (lbs)	XLP	Poly	XLP	Poly
Morochuca	6	Solid	45	6	6/1	1,190	152	147	75	60
Chola	6	7/w	45	6	6/1	1,190	162	151	75	60
Morgan	4	Solid	45	4	6/1	1,860	226	220	100	80
Hackney	4	7/w	45	4	6/1	1,860	241	226	100	80
Palomino	2	7/w	45	2	6/1	2,850	362	342	135	105
Costena	1/0	19/w	60	1/0	6/1	4,380	575	550	180	135
Grullo	2/0	19/w	60	2/0	6/1	5,310	707	678	205	155
Suffolk	3/0	19/w	60	3/0	6/1	6,620	872	838	235	180
Appaloosa	4/0	19/w	60	4/0	6/1	8,350	1,079	1,039	270	205
Bronco	336.4	19/w	60	336.4	18/1	8,580	1,613	1,568	330	240
Gelding	336.4	19/w	60	4/0	6/1	8,350	1,548	1,494	330	240

KINGWIRE Quadruplex Service Drop - Aluminum Conductor AAAC-Alloy - Neutral Messenger

Code Word	Phase Conductors			Bare Neutral			Weight per 1000 (lbs)		Rating (AMPS)	
	Size AWG	Strand	Insulation Thickness (MLS)	Size AWG	Strand	Breaking Strength (lbs)	XLP	Poly	XLP	Poly
Bay	6	Solid	45	6	7	1,110	145	140	75	60
French Coach	6	7/w	45	6	7	1,110	155	144	75	60
German Coach	4	Solid	45	4	7	1,760	214	208	100	80
Arabian	4	7/w	45	4	7	1,760	229	214	100	80
Belgian	2	7/w	45	2	7	2,800	344	323	135	105
Shetland	1/0	19/w	60	1/0	7	4,460	546	521	180	135
Thoroughbred	2/0	19/w	60	2/0	7	5,390	670	641	205	155
Trotter	3/0	19/w	60	3/0	7	6,790	825	791	235	180
Walking	4/0	19/w	60	4/0	7	8,560	1,019	979	270	205

* Note: Designated sizes are ACSR 6/1 diameter equivalent resistivity per ASTM-B-399 for 6201. Conductor temperature of 90°C for XLP, 75°C for Poly; ambient temperatures of 40°C; emissivity 0.9; 2ft/sec. wind in sun.

** To determine current ampacity by conductor size, please consult The National Electric Code, latest edition. The data is approximate and subject to normal manufacturing tolerances.



SERVICE DROP CABLE

APPLICATION: *DUPLEX:* To supply 120 volts aerial service for temporary service at construction sites, outdoor or street lighting. For service at 600 volts or lower at conductor temperatures not to exceed 75°C for polyethylene insulated conductors or 90°C for crosslinked polyethylene (XLP) insulated conductors.

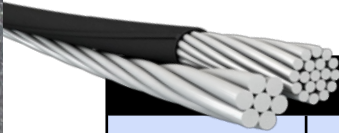
TRIPLEX: To supply power from the utility's lines to the consumer's weatherhead. For service at 600 volts or less (phase to phase) at a conductor temperature of 75°C maximum for polyethylene insulation or 90°C maximum for crosslinked polyethylene (XLP) insulated conductors.

QUADRUPLEX: Used to supply 3 phase power, usually from a pole mounted transformer to the user's service head where connection to the service entrance cable is made. To be used at voltages of 600 volts or less phase to phase and at conductor temperatures not to exceed 75°C for polyethylene insulated conductors or 90°C for crosslinked polyethylene (XLP) insulated conductors.

PRODUCT FEATURES: Conductors are concentrically stranded, compressed 1350-H19 aluminum. Insulated with either polyethylene or XLP crosslinked polyethylene. Neutral messengers are concentrically stranded 6201, AAC or ACSR.

STANDARDS: Service drop cable meets or exceeds the following ASTM specifications:

- **B-230** Aluminum Wire, 1350-H19 for Electrical Purposes
- **B-231** Aluminum Conductors, Concentric-Lay-Stranded
- **B-232** Aluminum Conductors, Concentric-Lay-Stranded, Coated Steel Reinforced (ACSR)
- **B-399** Concentric-Lay-Stranded, 6201-T81 Aluminum Alloy Conductors
- **B-901** Compressed Round Stranded Aluminum Conductors Using Single Input Wire
- **ANSI/ICEA S-76-474**



KINGWIRE Duplex Service Drop - Aluminum Conductor AAC

Code Word	Phase Conductors			Bare Neutral			Weight per 1000 (lbs)		Rating (AMPS)	
	Size AWG	Strand	Insulation Thickness (MLS)	Size AWG	Strand	Breaking Strength (lbs)	XLP	Poly	XLP	Poly
Peakingese	6	Solid	45	6	7/w	563	63.5	61.7	85	70
Collie	6	7/w	45	6	7/w	563	66.8	63.1	85	70
Dachshund	4	Solid	45	4	7/w	881	95.5	93.4	110	90
Spaniel	4	7/w	45	4	7/w	881	100.5	95.4	110	90
Doberman	2	7/w	45	2	7/w	1,350	152.7	145.7	150	120
Malamute	1/0	19/w	60	1/0	7/w	1,990	242.6	234.2	205	160

KINGWIRE Duplex Service Drop - Aluminum Conductor ACSR - Neutral Messenger

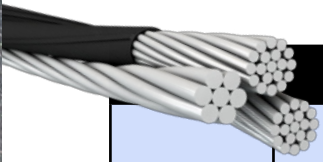
Code Word	Phase Conductors			Bare Neutral			Weight per 1000 (lbs)		Rating (AMPS)	
	Size AWG	Strand	Insulation Thickness (MLS)	Size AWG	Strand	Breaking Strength (lbs)	XLP	Poly	XLP	Poly
Setter	6	Solid	45	6	6/1	1,190	75.0	73.2	85	70
Shepherd	6	7/w	45	6	6/1	1,190	78.3	74.6	85	70
Eskimo	4	Solid	45	4	6/1	1,860	113.7	111.6	110	90
Terrier	4	7/w	45	4	6/1	1,860	118.7	113.6	110	90
Chow	2	7/w	45	2	6/1	2,850	181.7	174.7	150	120
Bull	1/0	19/w	60	1/0	6/1	4,380	288.7	280.3	200	160

KINGWIRE Duplex Service Drop - Aluminum Conductor AAAC - Alloy Neutral Messenger

Code Word	Phase Conductors			Bare Neutral			Weight per 1000 (lbs)		Rating (AMPS)	
	Size AWG	Strand	Insulation Thickness (MLS)	Size AWG	Strand	Breaking Strength (lbs)	XLP	Poly	XLP	Poly
Chihuahua	6	Solid	45	6	7/w	1,110	67.6	65.8	85	70
Vizsla	6	7/w	45	6	7/w	1,110	70.9	67.2	85	70
Harrier	4	Solid	45	4	7/w	1,760	102.0	99.9	110	90
Whippet	4	7/w	45	4	7/w	1,760	107.0	101.9	110	90
Schnauzer	2	7/w	45	2	7/w	2,800	163.3	156.2	150	120
Heeler	1/0	19/w	60	1/0	7/w	4,460	259.2	250.8	200	160

* Note: Designated sizes are ACSR 6/1 diameter equivalent resistivity per ASTM-B-399 for 6201. Conductor temperature of 90°C for XLP, 75°C for Poly; ambient temperatures of 40°C; emissivity 0.9; 2ft/sec. wind in sun.

** To determine current ampacity by conductor size, please consult The National Electric Code, latest edition. The data is approximate and subject to normal manufacturing tolerances.



KINGWIRE Triplex Service Drop - AAAC-Alloy Neutral Messenger

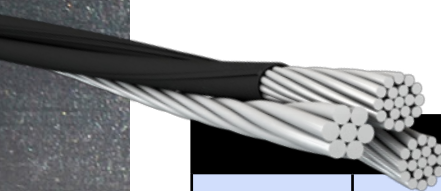
Code Word	Phase Conductors			Bare Neutral			Weight per 1000 (lbs)		Rating (AMPS)	
	Size AWG	Strand	Insulation Thickness (MLS)	Size AWG	Strand	Breaking Strength (lbs)	XLP	Poly	XLP	Poly
Minex	6	Solid	45	6	7	1,110	106.6	102.9	85	70
Hippa	6	7/w	45	6	7	1,110	107.0	105.7	85	70
Prawn	4	Solid	45	4	7	1,760	158.4	154.1	110	90
Barnacles	4	7/w	45	4	7	1,760	160.0	157.0	110	90
Shrimp	2	7/w	45	2	7	2,800	243.0	238.0	150	115
Gammarus	1/0	7/w	60	1/0	7	4,460	390.0	384.0	200	155
Leda	1/0	19/w	60	1/0	7	4,460	384.0	378.0	200	155
Dungenese	2/0	7/w	60	2/0	7	5,390	481.0	474.0	230	180
Cyclops	2/0	19/w	60	2/0	7	5,390	473.0	467.0	230	180
Flustra	3/0	19/w	60	3/0	7	6,790	596.0	589.1	260	205
Lepas	4/0	19/w	60	4/0	7	8,560	725.0	716.0	300	235

KINGWIRE Triplex Service Drop - Aluminum Conductor - AAAC - Alloy Reduced Neutral Messenger

Code Word	Phase Conductors			Bare Neutral			Weight per 1000 (lbs)		Rating (AMPS)	
	Size AWG	Strand	Insulation Thickness (MLS)	Size AWG	Strand	Breaking Strength (lbs)	XLP	Poly	XLP	Poly
Artemia	4	Solid	45	6	7	1,110	134.0	132.0	110	90
Crab	4	7/w	45	6	7	1,110	144.0	141.2	110	90
Solaster	2	7/w	45	4	7	1,760	216.0	212.6	150	115
Sandcrab	1/0	7/w	60	2	7	2,800	348.0	341.0	200	155
Echinus	1/0	19/w	60	2	7	2,800	342.0	336.0	200	155
Crayfish	2/0	7/w	60	1	7	3,530	452.6	422.5	230	180
Sipho	2/0	19/w	60	1	7	3,530	441.0	422.5	230	180
Fulgar	3/0	19/w	60	1/0	7	4,460	525.0	518.0	260	205
Arca	4/0	19/w	60	2/0	7	5,360	640.0	632.0	300	235

KINGWIRE Triplex Service Drop - Aluminum Conductor - AAC - Neutral Messenger

Code Word	Phase Conductors			Bare Neutral			Weight per 1000 (lbs)		Rating (AMPS)	
	Size AWG	Strand	Insulation Thickness (MLS)	Size AWG	Strand	Breaking Strength (lbs)	XLP	Poly	XLP	Poly
Haiotis	6	Solid	45	6	7	563	102.5	98.8	85	70
Patella	6	7/w	45	6	7	563	104.0	101.6	85	70
Fusus	4	Solid	45	4	7	881	151.9	147.6	110	90
Oyster	4	7/w	45	4	7	881	154.0	151.7	110	90
Clam	2	7/w	45	2	7	1,350	232.0	228.0	150	115
Murex	1/0	7/w	1/0	1/0	7	1,990	374.0	367.0	200	155
Purpura	1/0	19/w	1/0	1/0	7	1,990	368.0	362.0	200	155
Nassa	2/0	7/w	2/0	2/0	7	2,510	461.0	453.0	230	180
Melita	3/0	19/w	3/0	3/0	19	3,310	585.2	562.9	260	205
Portunus	4/0	19/w	4/0	4/0	19	4,020	693.0	684.0	300	235
Nannynose	336.4	19/w	336.4	336.4	19	6,146	1,111.0	1,096.0	380	290


Triplex Service Drop - Aluminum Conductor - Full Size ACSR Messenger

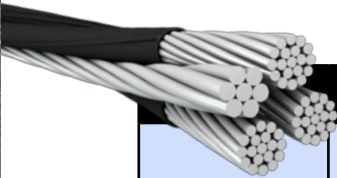
Code Word	Phase Conductors			Bare Neutral			Weight per 1000 (lbs)		Rating (AMPS)	
	Size AWG	Strand	Insulation Thickness (MLS)	Size AWG	Strand	Breaking Strength (lbs)	XLP	Poly	XLP	Poly
Paludina	6	Solid	45	6	6/1	1,190	114	113	85	70
Voluta	6	7/w	45	6	6/1	1,190	115	112	85	70
Whelk	4	Solid	45	4	6/1	1,860	163	161	110	90
Periwinkle	4	7/w	45	4	6/1	1,860	172	169	110	90
Conch	2	7/w	45	2	6/1	2,850	262	257	150	115
Neritina	1/0	7/w	60	1/0	6/1	4,380	420	414	200	115
Cenia	1/0	19/w	60	1/0	6/1	4,380	414	408	200	115
Runcina	2/0	7/w	60	2/0	6/1	5,310	519	512	230	180
Triton	2/0	19/w	60	2/0	6/1	5,310	511	505	230	180
Cherrystone	3/0	7/w	60	3/0	6/1	6,620	656	643	260	205
Mursia	3/0	19/w	60	3/0	6/1	6,620	633	626	260	205
Razor	4/0	7/w	60	4/0	6/1	8,350	814	799	300	235
Zuzara	4/0	19/w	60	4/0	6/1	8,350	785	777	300	235
Limot	336.4	19/w	80	336.4	18/1	8,680	1,160	1,147	300	290

KINGWIRE Triplex Service Drop - Aluminum Conductor - ACSR Reduced Size Messenger

Code Word	Phase Conductors			Bare Neutral			Weight per 1000 (lbs)		Rating (AMPS)	
	Size AWG	Strand	Insulation Thickness (MLS)	Size AWG	Strand	Breaking Strength (lbs)	XLP	Poly	XLP	Poly
Scallop	4	Solid	45	6	6/1	1,190	142	139	110	90
Strombus	4	7/w	45	6	6/1	1,190	151	148	110	90
Cockle	2	7/w	45	4	6/1	1,860	228	224	150	115
Janthina	1/0	7/w	60	2	6/1	2,850	367	360	200	155
Ranella	1/0	19/w	60	2	6/1	2,850	361	356	200	155
Cavolinia	2/0	7/w	60	1	6/1	3,550	452	444	230	180
Clio	2/0	19/w	60	1	6/1	3,550	444	437	230	180
Sanddollar	3/0	7/w	60	1/0	6/1	4,380	570	557	260	205
Aega	3/0	19/w	60	1/0	6/1	4,380	565	552	260	205
Cuttlefish	4/0	7/w	60	2/0	6/1	5,310	706	691	300	235
Cerapus	4/0	19/w	60	2/0	6/1	5,310	678	670	300	235
Cowry	336.4	19/w	80	4/0	6/1	8,350	1,135	1,093	380	290

* Note: Designated sizes are ACSR 6/1 diameter equivalent resistivity per ASTM-B-399 for 6201. Conductor temperature of 90°C for XLP, 75°C for Poly; ambient temperatures of 40°C; emissivity 0.9; 2ft/sec. wind in sun.

** To determine current ampacity by conductor size, please consult The National Electric Code, latest edition. The data is approximate and subject to normal manufacturing tolerances.



Quadruplex Service Drop - Aluminum Conductor AAC - Neutral Messenger

Code Word	Phase Conductors			Bare Neutral			Weight per 1000 (lbs)		Rating (AMPS)	
	Size AWG	Strand	Insulation Thickness (MLS)	Size AWG	Strand	Breaking Strength (lbs)	XLP	Poly	XLP	Poly
Clydesdale	4	Solid	45	4	7	881	208	201	100	80
Pinto	4	7/w	45	4	7	881	223	207	100	80
Mustang	2	7/w	45	2	7	1,350	333	312	135	105
Criollo	1/0	19/w	60	1/0	7	1,990	529	504	180	135
Percheron	2/0	19/w	60	2/0	7	2,510	649	620	205	155
Hanovarian	3/0	19/w	60	3/0	19	3,310	799	765	235	180
Oldenburg	4/0	19/w	60	4/0	19	4,020	986	946	270	205
Lippizaner	336.4	19/w	60	336.4	19	6,146	1,546	1,519	330	240

KINGWIRE Quadruplex Service Drop - Aluminum Conductor ACSR- Neutral Messenger

Code Word	Phase Conductors			Bare Neutral			Weight per 1000 (lbs)		Rating (AMPS)	
	Size AWG	Strand	Insulation Thickness (MLS)	Size AWG	Strand	Breaking Strength (lbs)	XLP	Poly	XLP	Poly
Morochuca	6	Solid	45	6	6/1	1,190	152	147	75	60
Chola	6	7/w	45	6	6/1	1,190	162	151	75	60
Morgan	4	Solid	45	4	6/1	1,860	226	220	100	80
Hackney	4	7/w	45	4	6/1	1,860	241	226	100	80
Palomino	2	7/w	45	2	6/1	2,850	362	342	135	105
Costena	1/0	19/w	60	1/0	6/1	4,380	575	550	180	135
Grullo	2/0	19/w	60	2/0	6/1	5,310	707	678	205	155
Suffolk	3/0	19/w	60	3/0	6/1	6,620	872	838	235	180
Appaloosa	4/0	19/w	60	4/0	6/1	8,350	1,079	1,039	270	205
Bronco	336.4	19/w	60	336.4	18/1	8,580	1,613	1,568	330	240
Gelding	336.4	19/w	60	4/0	6/1	8,350	1,548	1,494	330	240

KINGWIRE Quadruplex Service Drop - Aluminum Conductor AAAC-Alloy - Neutral Messenger

Code Word	Phase Conductors			Bare Neutral			Weight per 1000 (lbs)		Rating (AMPS)	
	Size AWG	Strand	Insulation Thickness (MLS)	Size AWG	Strand	Breaking Strength (lbs)	XLP	Poly	XLP	Poly
Bay	6	Solid	45	6	7	1,110	145	140	75	60
French Coach	6	7/w	45	6	7	1,110	155	144	75	60
German Coach	4	Solid	45	4	7	1,760	214	208	100	80
Arabian	4	7/w	45	4	7	1,760	229	214	100	80
Belgian	2	7/w	45	2	7	2,800	344	323	135	105
Shetland	1/0	19/w	60	1/0	7	4,460	546	521	180	135
Thoroughbred	2/0	19/w	60	2/0	7	5,390	670	641	205	155
Trotter	3/0	19/w	60	3/0	7	6,790	825	791	235	180
Walking	4/0	19/w	60	4/0	7	8,560	1,019	979	270	205

* Note: Designated sizes are ACSR 6/1 diameter equivalent resistivity per ASTM-B-399 for 6201. Conductor temperature of 90°C for XLP, 75°C for Poly; ambient temperatures of 40°C; emissivity 0.9; 2ft/sec. wind in sun.

** To determine current ampacity by conductor size, please consult The National Electric Code, latest edition. The data is approximate and subject to normal manufacturing tolerances.