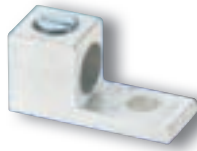
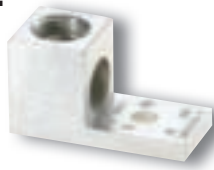


SINGLE AND DOUBLE LUGS

1



2



3



Versatile and reusable set screw connectors made of 6061T-6 aluminum alloy. Tin plated for low contact resistance. Suitable for use with both copper and aluminum conductors. Rated 600 volts.

CATALOG NO.	UPC CODE	FIG.	WIRE RANGE CU-AL	LENGTH	HEIGHT	WIDTH	MTG. HOLE	CARTON QTY.	WEIGHT LBS./100
6T	00100	1	6-14 AWG	1.06	0.5	0.5	1/4	100	1
4T	00101	1	4-14 AWG	1.060	.500	.375	.250	100	1.5
2T	00102	1	2-14 AWG	1.16	0.55	0.5	1/4	100	2
0T	00103	1	1/0-14 AWG	1.47	0.79	0.63	1/4	50	4
2/0T	00104	1	2/0-14 AWG	1.47	0.79	0.63	1/4	50	4
3/0T	00105	2	3/0-6 AWG	1.750	.844	.719	.266	50	5
250T	00106	2	250 MCM-6 AWG	2.0	1.02	0.88	.33	24	11
300T	00107	2	300 MCM-6 AWG	2.25	1.13	0.88	.33	24	12
350T	00108	2	350 MCM-6 AWG	2.25	1.13	0.99	.41	20	14
500T	00109	2	500 MCM-4 AWG	2.75	1.41	1.2	.41	6	26
600T	00110	2	600 MCM-2 AWG	3.18	1.51	1.43	.41	6	36
800T	00111	2	800-300 MCM	3.25	1.69	1.44	.56	6	47
1000T	00112	2	1000-500 MCM	3.25	1.88	1.69	.56	6	51
2-0T	00120	3	(2) 1/0-14 AWG	1.47	0.78	1.13	1/4	25	7
2-2/0T	00121	3*	(2) 2/0-14 AWG	1.47	0.78	1.25	1/4	25	8
2-250T	00122	3	(2) 250 MCM-6 AWG	2.56	1.02	1.69	3/8	10	20
2-350T	00123	3	(2) 350 MCM-6 AWG	2.88	1.13	1.92	3/8	8	27
2-600T	00124	3	(2) 600 MCM-2 AWG	3.18	1.51	2.68	1/2	4	55
2-800T	00125	3	(2) 800-300 MCM	3.25	1.69	2.75	1/2	2	90
2-1000T	00126	3	(2) 1000-500 MCM	3.25	1.88	3.19	1/2	2	92

*Slotted Screws

PANELBOARD LUGS

1



2



3

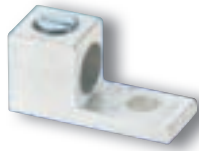


Large size set screw connectors with multiple mounting holes for a secure, turn-prevent connection. Made of 6061T-6 aluminum alloy. Tin plated for low contact resistance. Suitable for use with both copper and aluminum conductors. Rated 600 volts. Mounting hole spacing is 1 3/4" from center to center.

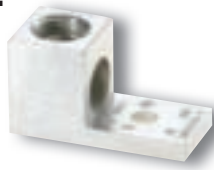
CATALOG NO.	UPC CODE	FIG.	WIRE RANGE CU-AL	LENGTH	HEIGHT	WIDTH	MTG. HOLE	CARTON QTY.	WEIGHT LBS./100
250L2	00130	1	250 MCM-6 AWG	4.31	1.38	0.88	0.56	15	15
350L2	00131	1	350 MCM-6 AWG	4.31	1.38	0.99	0.56	8	24
600L2	00132	1	600 MCM-2 AWG	4.65	1.51	1.43	9/16	4	46
800L2	00133	1	800-300 MCM AWG	4.75	1.69	1.44	9/16	4	61
1000L2	00134	1	1000-500 MCM AWG	4.94	1.88	1.69	9/16	4	63
2-250L2	00140	2	(2) 250 MCM-6 AWG	4.000	1.188	1.813	9/16	6	32
2-350L2	00141	2	(2) 350 MCM-6 AWG	4.31	1.375	1.94	1/2	4	43
2-600L2	00142	2	(2) 600 MCM-2 AWG	4.65	1.51	2.68	1/2	3	70
2-800L2	00143	2	(2) 800-300 MCM AWG	4.94	1.69	2.75	1/2	2	90
2-1000L2	00144	2	(2) 1000-500 MCM AWG	4.94	1.88	3.19	1/2	2	100
3-250L2/L4	00150	3	(3) 250 MCM-6 AWG	4.000	1.188	2.813	9/16	3	49
3-350L2/L4	00151	3	(3) 350 MCM-6 AWG	4.313	1.375	3.000	9/16	2	65
3-600L2/L4	00152	3	(3) 600 MCM-2 AWG	4.688	1.563	3.750	9/16	2	106
3-800L2/L4	00153	3	(3) 800-300 MCM AWG	4.750	1.938	4.500	9/16	2	137
3-1000L2/L4	00154	3	(3) 1000-500 MCM AWG	4.750	1.938	4.500	9/16	2	218

SINGLE AND DOUBLE LUGS

1



2



3



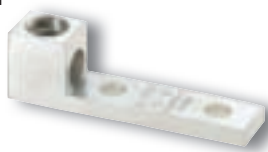
Versatile and reusable set screw connectors made of 6061T-6 aluminum alloy. Tin plated for low contact resistance. Suitable for use with both copper and aluminum conductors. Rated 600 volts.

CATALOG NO.	UPC CODE	FIG.	WIRE RANGE CU-AL	LENGTH	HEIGHT	WIDTH	MTG. HOLE	CARTON QTY.	WEIGHT LBS./100
6T	00100	1	6-14 AWG	1.06	0.5	0.5	1/4	100	1
4T	00101	1	4-14 AWG	1.060	.500	.375	.250	100	1.5
2T	00102	1	2-14 AWG	1.16	0.55	0.5	1/4	100	2
0T	00103	1	1/0-14 AWG	1.47	0.79	0.63	1/4	50	4
2/0T	00104	1	2/0-14 AWG	1.47	0.79	0.63	1/4	50	4
3/0T	00105	2	3/0-6 AWG	1.750	.844	.719	.266	50	5
250T	00106	2	250 MCM-6 AWG	2.0	1.02	0.88	.33	24	11
300T	00107	2	300 MCM-6 AWG	2.25	1.13	0.88	.33	24	12
350T	00108	2	350 MCM-6 AWG	2.25	1.13	0.99	.41	20	14
500T	00109	2	500 MCM-4 AWG	2.75	1.41	1.2	.41	6	26
600T	00110	2	600 MCM-2 AWG	3.18	1.51	1.43	.41	6	36
800T	00111	2	800-300 MCM	3.25	1.69	1.44	.56	6	47
1000T	00112	2	1000-500 MCM	3.25	1.88	1.69	.56	6	51
2-0T	00120	3	(2) 1/0-14 AWG	1.47	0.78	1.13	1/4	25	7
2-2/0T	00121	3*	(2) 2/0-14 AWG	1.47	0.78	1.25	1/4	25	8
2-250T	00122	3	(2) 250 MCM-6 AWG	2.56	1.02	1.69	3/8	10	20
2-350T	00123	3	(2) 350 MCM-6 AWG	2.88	1.13	1.92	3/8	8	27
2-600T	00124	3	(2) 600 MCM-2 AWG	3.18	1.51	2.68	1/2	4	55
2-800T	00125	3	(2) 800-300 MCM	3.25	1.69	2.75	1/2	2	90
2-1000T	00126	3	(2) 1000-500 MCM	3.25	1.88	3.19	1/2	2	92

*Slotted Screws

PANELBOARD LUGS

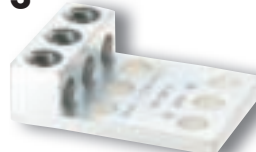
1



2



3



Large size set screw connectors with multiple mounting holes for a secure, turn-prevent connection. Made of 6061T-6 aluminum alloy. Tin plated for low contact resistance. Suitable for use with both copper and aluminum conductors. Rated 600 volts. Mounting hole spacing is 1 3/4" from center to center.

CATALOG NO.	UPC CODE	FIG.	WIRE RANGE CU-AL	LENGTH	HEIGHT	WIDTH	MTG. HOLE	CARTON QTY.	WEIGHT LBS./100
250L2	00130	1	250 MCM-6 AWG	4.31	1.38	0.88	0.56	15	15
350L2	00131	1	350 MCM-6 AWG	4.31	1.38	0.99	0.56	8	24
600L2	00132	1	600 MCM-2 AWG	4.65	1.51	1.43	9/16	4	46
800L2	00133	1	800-300 MCM AWG	4.75	1.69	1.44	9/16	4	61
1000L2	00134	1	1000-500 MCM AWG	4.94	1.88	1.69	9/16	4	63
2-250L2	00140	2	(2) 250 MCM-6 AWG	4.000	1.188	1.813	9/16	6	32
2-350L2	00141	2	(2) 350 MCM-6 AWG	4.31	1.375	1.94	1/2	4	43
2-600L2	00142	2	(2) 600 MCM-2 AWG	4.65	1.51	2.68	1/2	3	70
2-800L2	00143	2	(2) 800-300 MCM AWG	4.94	1.69	2.75	1/2	2	90
2-1000L2	00144	2	(2) 1000-500 MCM AWG	4.94	1.88	3.19	1/2	2	100
3-250L2/L4	00150	3	(3) 250 MCM-6 AWG	4.000	1.188	2.813	9/16	3	49
3-350L2/L4	00151	3	(3) 350 MCM-6 AWG	4.313	1.375	3.000	9/16	2	65
3-600L2/L4	00152	3	(3) 600 MCM-2 AWG	4.688	1.563	3.750	9/16	2	106
3-800L2/L4	00153	3	(3) 800-300 MCM AWG	4.750	1.938	4.500	9/16	2	137
3-1000L2/L4	00154	3	(3) 1000-500 MCM AWG	4.750	1.938	4.500	9/16	2	218