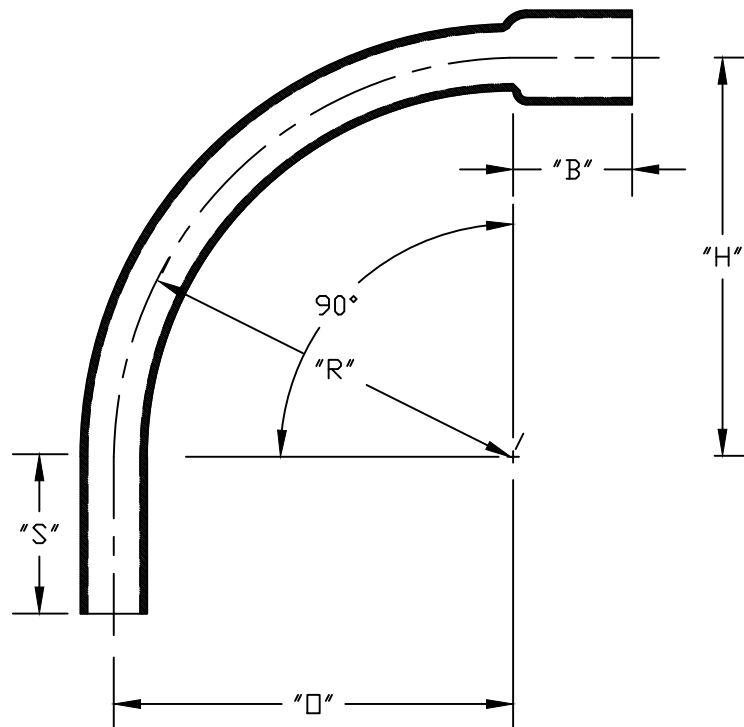


PART NUMBER	SIZE	"R"	"□"	"H"	"S" MIN	"B" MIN	"L"
5233823	½"	4"	4"	4"	1 ½"	1¼"	6 ¼"
5233824	¾"	4 ½"	4 ½"	4 ½"	1 ½"	¾"	7 ⅛"
5233825	1"	5 ¾"	5 ¾"	5 ¾"	1 ⅞"	⅞"	9"
5233826	1 ¼"	7 ¼"	7 ¼"	7 ¼"	2"	1"	11 ⅜"
5233827	1 ½"	8 ¼"	8 ¼"	8 ¼"	2"	1 ⅛"	13"
5233828	2"	9 ½"	9 ½"	9 ½"	2"	1 ¼"	15"
5233829	2 ½"	10 ½"	10 ½"	10 ½"	3"	1 ½"	16 ½"
5233830	3"	13"	13"	13"	3 ⅛"	1 ⅝"	20 ⅜"
5233831	3 ½"	15"	15"	15"	3 ¼"	1 1¼"	23 ½"
5233832	4"	16"	16"	16"	3 ⅜"	1 ¾"	25 ⅛"
5233835	5"	24"	24"	24"	3 ⅝"	2"	37 ⅝"
5233834	6"	30"	30"	30"	3 ¾"	2 ⅛"	47 ⅛"
5233993D	8"	48"	48"	48"	6 ⅝"	4 ⅞"	75 ⅜"



2" & greater are CSA Listed.

ETL LISTED
 CONFORMS TO UL651
 ETL CONTROL #3107144
 CONFORMS TO NEMA TC3
 SEE NEC ARTICLE 352 FOR USE
 MATERIAL IS RIGID PVC
 BEND TOLERANCE IS ±2°



CANTEX
 INC.
 Fort Worth, TEXAS

90° Elbows Bell End
 Schedule 40 Standard Radius Elbows

Drawn By: D. Gwinn

Date: 4/30/26

Ref.