

# Liquidtight Fittings

## Type 4Q - Straight

### Use:

To secure, ground and seal Liquidtight Flexible Metal Conduit, Type LFMC, to boxes and enclosures.

### Features:

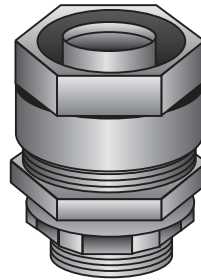
- Tapered threaded male hub NPT
- Compact, slim diameter with small turning radius
- Furnished with locknut and KO sealing ring.
- Liquidtight/Raintight/Oiltight/Concretetight
- UL Listed NEMA Type 4 when installed into a NPT threaded entry or UL Listed conduit hub (sizes 1½" and larger require thread sealant).
- Suitable for grounding through 1¼" Trade Size per NEC Section 250.118(7)
- For Trade Sizes 1¼" and larger, an internal or external equipment bonding conductor is required. See 4Q-L Series with external ground lug in Catalog Section GB.
- Suitable for use in the following Hazardous Locations:
  - Class I, Div. 2 per NEC 501.4(B)
  - Class I, Zone 2 per NEC 505.15(C)(2)
  - Class II, Div. 1 per NEC 502.4(A)(1)(e)
  - Class II, Div. 2 per NEC 502.4(B)(2)
  - Class III, Div. 1 per NEC 503.3(A)(2)
  - Class III, Div. 2 per NEC 503.3(B)
- Intrinsically Safe per NEC 504.20
- Bonding Wedge Locknuts are recommended in Hazardous Locations. See 101 Series on Page DB8.
- Suitable for wet locations
- Long ferrule prevents pullout and tight bend conduit "pop-out"
- Reusable ferrule
- Inspection windows in ferrule to ensure full engagement
- See Page GC4 for our patented Ferrule Wrench which makes ferrule installation easy.

### Material/Finish:

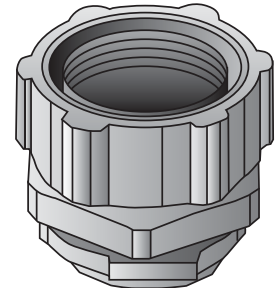
Malleable Iron Body and Nut, Zinc Electroplated. Steel Ferrule, Zinc Electroplated.

### Optional Finish:

Available Hot Dip/Mechanically Galvanized, See 4Q-TG Series in Catalog Section GC.



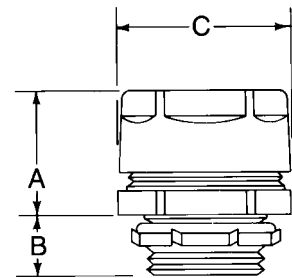
Type 4Q-38 — Type 4Q-200




Type 4Q-250 — Type 4Q-600


| Trade Size (inches) | Catalog Number | Insulated Throat Catalog Number | Dimensions in Inches |    |    |
|---------------------|----------------|---------------------------------|----------------------|----|----|
|                     |                |                                 | A                    | B  | C  |
| ⅜ (½ KO)            | 4Q-38          | 4Q-38T                          | 1                    | ½  | 1⅝ |
| ½                   | 4Q-50          | 4Q-50T                          | 1                    | ½  | 1¼ |
| ¾                   | 4Q-75          | 4Q-75T                          | 1⅝                   | ½  | 1½ |
| 1                   | 4Q-100         | 4Q-100T                         | 1¼                   | ⅝  | 1¾ |
| 1¼                  | 4Q-125         | 4Q-125T                         | 1⅝                   | ⅝  | 2½ |
| 1½                  | 4Q-150         | 4Q-150T                         | 1⅝                   | ⅝  | 2¾ |
| 2                   | 4Q-200         | 4Q-200T                         | 1½                   | ⅝  | 3¼ |
| 2½                  | 4Q-250         | 4Q-250T                         | 2                    | 1  | 4⅝ |
| 3                   | 4Q-300         | 4Q-300T                         | 2                    | 1⅝ | 4⅞ |
| 3½                  | 4Q-350         | 4Q-350T                         | 2¼                   | 1¼ | 4⅞ |
| 4                   | 4Q-400         | 4Q-400T                         | 2¼                   | 1¼ | 6⅝ |
| 5                   | 4Q-500*        | 4Q-500T*                        | 2⅝                   | 1⅝ | 7⅝ |
| 6                   | 4Q-600*        | 4Q-600T*                        | 2½                   | 1⅝ | 8⅝ |

\*UL Listing not applicable  
\*CSA Certification not applicable



### Third Party Certification:

 UL Listed: 11853

 CSA Certified: 009795

### Applicable Third Party Standards:

UL Standard: 514B

CSA Standard: C22.2 No. 18

NEMA: FB-1

Federal Spec: W-F-406E

# Liquidtight Fittings

## Type 4Q - 45° & 90°

### Use:

To secure, ground and seal Liquidtight Flexible Metal conduit, Type LFMC, to boxes and enclosures.

### Features:

- Tapered threaded male hub NPT.
- Compact, slim diameter with small turning radius.
- Furnished with locknut and KO sealing ring.
- Liquidtight/Raintight/Oiltight/Concretetight
- UL Listed NEMA Type 4 when installed into a NPT threaded entry or UL Listed conduit hub (sizes 1¼" and larger require thread sealant).
- Suitable for grounding through 1¼" Trade Size per NEC Section 250.118(7)
- For Trade Sizes 1½" and larger, an internal or external equipment bonding conductor is required. See 4Q-L Series with external ground lug in Catalog Section GB.
- Suitable for use in the following Hazardous Locations:  
Class I, Div. 2 per NEC 501.4(B)  
Class I, Zone 2 per NEC 505.15(C)(2)  
Class II, Div. 1 per NEC 502.4(A)(1)(e)  
Class II, Div. 2 per NEC 502.4(B)(2)  
Class III, Div. 1 per NEC 503.3(A)(2)  
Class III, Div. 2 per NEC 503.3(B)  
Intrinsically Safe per NEC 504.20
- Bonding Wedge Locknuts are recommended in Hazardous Locations. See 101 Series on Page DB8.
- Suitable for wet locations.
- Long ferrule prevents pullout and tight bend conduit "pop-out".
- Reusable ferrule.
- Inspection windows in ferrule to ensure full engagement.
- See Page GC4 for our patented Ferrule Wrench which makes ferrule installation easy.

### Material/Finish:

Malleable Iron Body and Nut, Zinc Electroplated. Steel Ferrule, Zinc Electroplated.

### Optional Finish:

Available Hot-Dip/Mechanically Galvanized, See "4Q-TG" Series in Catalog Section GC.

### Third Party Certification:

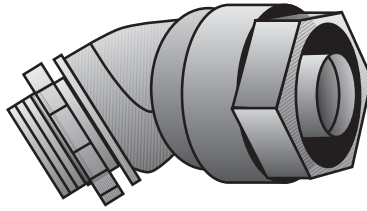
 UL Listed: 11853

 CSA Certified: 009795

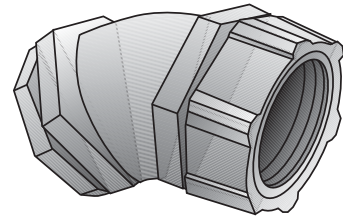
### Applicable Third Party Standards:

UL Standard: 514B  
CSA Standard: C22.2 No. 18  
NEMA: FB-1  
Federal Spec: W-F-406E

Effective December, 2007  
Copyright 2007



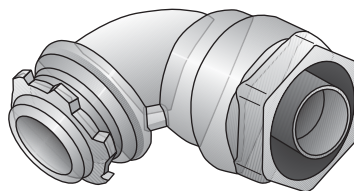
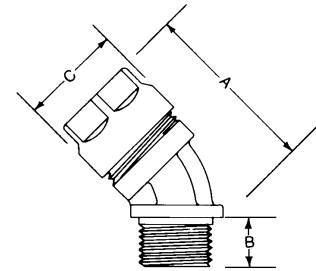
Type 4Q-438 — Type 4Q-4200



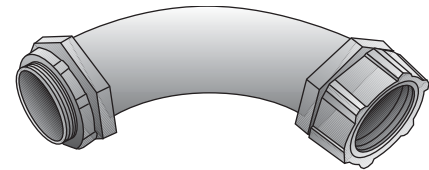
Type 4Q-4250 — Type 4Q-4500

| Trade Size (inches) | Catalog Number | Insulated Throat Catalog Number | Dimensions in Inches |    |        |
|---------------------|----------------|---------------------------------|----------------------|----|--------|
|                     |                |                                 | A                    | B  | C Dia. |
| ⅜ (½ KO)            | 4Q-438         | 4Q-438T                         | 1⅞                   | ⅞  | 1⅞     |
| ½                   | 4Q-450         | 4Q-450T                         | 1⅞                   | ⅞  | 1¼     |
| ¾                   | 4Q-475         | 4Q-475T                         | 2¼                   | ⅞  | 1½     |
| 1                   | 4Q-4100        | 4Q-4100T                        | 2⅝                   | ½  | 1¾     |
| 1¼                  | 4Q-4125        | 4Q-4125T                        | 3¼                   | ⅝  | 2¼     |
| 1½                  | 4Q-4150        | 4Q-4150T                        | 3⅝                   | ⅝  | 2⅝     |
| 2                   | 4Q-4200        | 4Q-4200T                        | 4                    | ⅝  | 3      |
| 2½                  | 4Q-4250        | 4Q-4250T                        | 5¼                   | 1  | 4⅞     |
| 3                   | 4Q-4300        | 4Q-4300T                        | 6⅞                   | 1⅞ | 4⅞     |
| 4                   | 4Q-4400        | 4Q-4400T                        | 7½                   | 1¼ | 6⅞     |
| 5                   | 4Q-4500        | 4Q-4500T                        | 8                    | 1¼ | 7⅞     |

\*UL Listing not applicable



Type 4Q-938 — Type 4Q-9200



Type 4Q-9250 — Type 4Q-9500

| Trade Size (inches) | Catalog Number | Insulated Throat Catalog Number | Dimensions in Inches |    |    |    |
|---------------------|----------------|---------------------------------|----------------------|----|----|----|
|                     |                |                                 | A                    | B  | C  | D  |
| ⅜ (½ KO)            | 4Q-938         | 4Q-938T                         | 1⅞                   | ⅞  | 1⅞ | 1⅞ |
| ½                   | 4Q-950         | 4Q-950T                         | 1⅞                   | ⅞  | 1¼ | 1⅞ |
| ¾                   | 4Q-975         | 4Q-975T                         | 1⅞                   | ½  | 1½ | 1½ |
| 1                   | 4Q-9100        | 4Q-9100T                        | 2                    | ½  | 1¾ | 1⅞ |
| 1¼                  | 4Q-9125        | 4Q-9125T                        | 2¼                   | ⅝  | 2¼ | 2⅞ |
| 1½                  | 4Q-9150        | 4Q-9150T                        | 2⅝                   | ⅝  | 2⅝ | 2¼ |
| 2                   | 4Q-9200        | 4Q-9200T                        | 3½                   | ¾  | 3  | 2⅞ |
| 2½                  | 4Q-9250        | 4Q-9250T                        | 7½                   | 1  | 4⅞ | 7⅞ |
| 3                   | 4Q-9300        | 4Q-9300T                        | 8⅞                   | 1⅞ | 4⅞ | 8½ |
| 4                   | 4Q-9400        | 4Q-9400T                        | 11⅞                  | 1⅞ | 6⅞ | 11 |
| 5                   | 4Q-9500        | 4Q-9500T                        | 14                   | 1¼ | 7⅞ | 14 |

\*UL Listing not applicable

