

Liquidtight Fittings

Type 4Q - Straight

Use:

To secure, ground and seal Liquidtight Flexible Metal Conduit, Type LFMC, to boxes and enclosures.

Features:

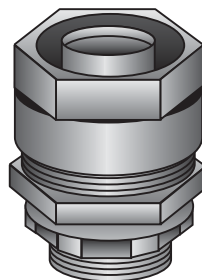
- Tapered threaded male hub NPT
- Compact, slim diameter with small turning radius
- Furnished with locknut and KO sealing ring.
- Liquidtight/Raintight/Oiltight/Concretetight
- UL Listed NEMA Type 4 when installed into a NPT threaded entry or UL Listed conduit hub (sizes 1½" and larger require thread sealant).
- Suitable for grounding through 1¼" Trade Size per NEC Section 250.118(7)
- For Trade Sizes 1¼" and larger, an internal or external equipment bonding conductor is required. See 4Q-L Series with external ground lug in Catalog Section GB.
- Suitable for use in the following Hazardous Locations:
Class I, Div. 2 per NEC 501.4(B)
Class I, Zone 2 per NEC 505.15(C)(2)
Class II, Div. 1 per NEC 502.4(A)(1)(e)
Class II, Div. 2 per NEC 502.4(B)(2)
Class III, Div. 1 per NEC 503.3(A)(2)
Class III, Div. 2 per NEC 503.3(B)
Intrinsically Safe per NEC 504.20
- Bonding Wedge Locknuts are recommended in Hazardous Locations. See 101 Series on Page DB8.
- Suitable for wet locations
- Long ferrule prevents pullout and tight bend conduit "pop-out"
- Reusable ferrule
- Inspection windows in ferrule to ensure full engagement
- See Page GC4 for our patented Ferrule Wrench which makes ferrule installation easy.

Material/Finish:

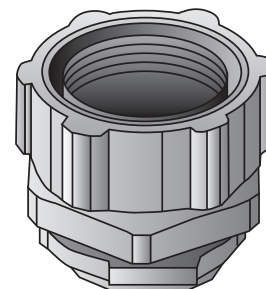
Malleable Iron Body and Nut, Zinc Electroplated. Steel Ferrule, Zinc Electroplated.

Optional Finish:

Available Hot Dip/Mechanically Galvanized, See 4Q-TG Series in Catalog Section GC.



Type 4Q-38 — Type 4Q-200

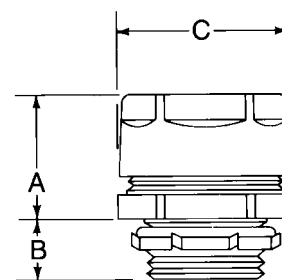


Type 4Q-250 — Type 4Q-600

Trade Size (inches)	Catalog Number	Insulated Throat Catalog Number	Dimensions in Inches		
			A	B	C
⅜ (½ KO)	4Q-38	4Q-38T	1	½	1⅝
½	4Q-50	4Q-50T	1	½	1¼
¾	4Q-75	4Q-75T	1⅝	½	1½
1	4Q-100	4Q-100T	1¼	⅝	1¾
1¼	4Q-125	4Q-125T	1⅝	⅝	2½
1½	4Q-150	4Q-150T	1⅝	⅝	2¾
2	4Q-200	4Q-200T	1½	⅝	3¼
2½	4Q-250	4Q-250T	2	1	4⅝
3	4Q-300	4Q-300T	2	1⅝	4⅞
3½	4Q-350	4Q-350T	2¼	1¼	4⅞
4	4Q-400	4Q-400T	2¼	1¼	6⅝
5	4Q-500*	4Q-500T*	2⅝	1⅝	7⅞
6	4Q-600*	4Q-600T*	2½	1⅝	8⅞

*UL Listing not applicable

*CSA Certification not applicable



Third Party Certification:



UL Listed: 11853



CSA Certified: 009795

Applicable Third Party Standards:

UL Standard: 514B

CSA Standard: C22.2 No. 18

NEMA: FB-1

Federal Spec: W-F-406E

Liquidtight Fittings

Type 4Q - 45° & 90°

Use:

To secure, ground and seal Liquidtight Flexible Metal conduit, Type LFMC, to boxes and enclosures.

Features:

- Tapered threaded male hub NPT.
- Compact, slim diameter with small turning radius.
- Furnished with locknut and KO sealing ring.
- Liquidtight/Raintight/Oiltight/Concretetight
- UL Listed NEMA Type 4 when installed into a NPT threaded entry or UL Listed conduit hub (sizes 1¼" and larger require thread sealant).
- Suitable for grounding through 1¼" Trade Size per NEC Section 250.118(7)
- For Trade Sizes 1½" and larger, an internal or external equipment bonding conductor is required. See 4Q-L Series with external ground lug in Catalog Section GB.
- Suitable for use in the following Hazardous Locations:
Class I, Div. 2 per NEC 501.4(B)
Class I, Zone 2 per NEC 505.15(C)(2)
Class II, Div. 1 per NEC 502.4(A)(1)(e)
Class II, Div. 2 per NEC 502.4(B)(2)
Class III, Div. 1 per NEC 503.3(A)(2)
Class III, Div. 2 per NEC 503.3(B)
Intrinsically Safe per NEC 504.20
- Bonding Wedge Locknuts are recommended in Hazardous Locations. See 101 Series on Page DB8.
- Suitable for wet locations.
- Long ferrule prevents pullout and tight bend conduit "pop-out".
- Reusable ferrule.
- Inspection windows in ferrule to ensure full engagement.
- See Page GC4 for our patented Ferrule Wrench which makes ferrule installation easy.

Material/Finish:

Malleable Iron Body and Nut, Zinc Electroplated. Steel Ferrule, Zinc Electroplated.

Optional Finish:

Available Hot-Dip/Mechanically Galvanized, See "4Q-TG" Series in Catalog Section GC.

Third Party Certification:

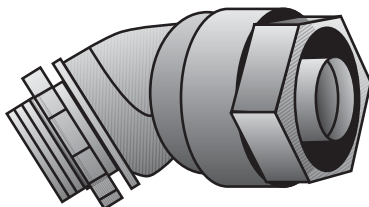
 UL Listed: 11853

 CSA Certified: 009795

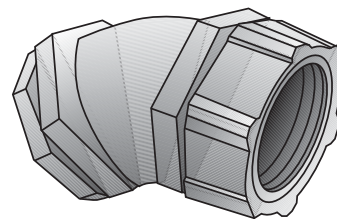
Applicable Third Party Standards:

UL Standard: 514B
CSA Standard: C22.2 No. 18
NEMA: FB-1
Federal Spec: W-F-406E

Effective December, 2007
Copyright 2007



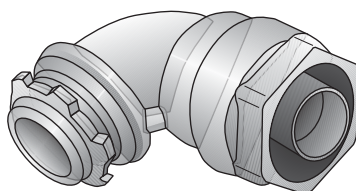
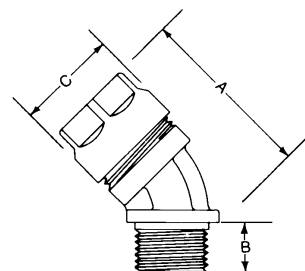
Type 4Q-438 — Type 4Q-4200



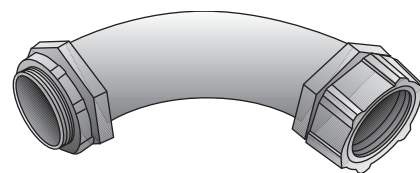
Type 4Q-4250 — Type 4Q-4500

Trade Size (inches)	Catalog Number	Insulated Throat Catalog Number	Dimensions in Inches		
			A	B	C Dia.
⅜ (½ KO)	4Q-438	4Q-438T	1⅞	⅞	1⅞
½	4Q-450	4Q-450T	1⅞	⅞	1¼
¾	4Q-475	4Q-475T	2¼	⅞	1½
1	4Q-4100	4Q-4100T	2⅞	½	1¾
1¼	4Q-4125	4Q-4125T	3¼	⅝	2¼
1½	4Q-4150	4Q-4150T	3⅞	⅝	2⅞
2	4Q-4200	4Q-4200T	4	⅝	3
2½	4Q-4250	4Q-4250T	5¼	1	4⅞
3	4Q-4300	4Q-4300T	6⅞	1⅞	4⅞
4	4Q-4400	4Q-4400T	7½	1¼	6⅞
5	4Q-4500•	4Q-4500T•	8	1¼	7⅞

•UL Listing not applicable



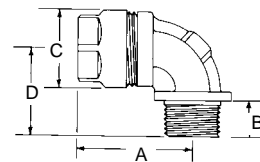
Type 4Q-938 — Type 4Q-9200



Type 4Q-9250 — Type 4Q-9500

Trade Size (inches)	Catalog Number	Insulated Throat Catalog Number	Dimensions in Inches			
			A	B	C	D
⅜ (½ KO)	4Q-938	4Q-938T	1⅞	⅞	1⅞	1⅞
½	4Q-950	4Q-950T	1⅞	⅞	1¼	1⅞
¾	4Q-975	4Q-975T	1⅞	½	1½	1½
1	4Q-9100	4Q-9100T	2	½	1¾	1⅞
1¼	4Q-9125	4Q-9125T	2¼	⅝	2¼	2⅞
1½	4Q-9150	4Q-9150T	2⅞	⅝	2⅞	2¼
2	4Q-9200	4Q-9200T	3½	¾	3	2⅞
2½	4Q-9250	4Q-9250T	7½	1	4⅞	7⅞
3	4Q-9300	4Q-9300T	8⅞	1⅞	4⅞	8½
4	4Q-9400	4Q-9400T	11⅞	1⅞	6⅞	11
5	4Q-9500•	4Q-9500T•	14	1¼	7⅞	14

•UL Listing not applicable



Liquidtight Fittings

Type 4Q - Straight

Use:

To secure, ground and seal Liquidtight Flexible Metal Conduit, Type LFMC, to boxes and enclosures.

Features:

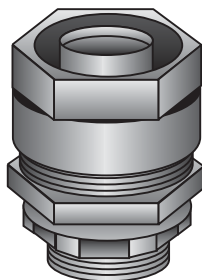
- Tapered threaded male hub NPT
- Compact, slim diameter with small turning radius
- Furnished with locknut and KO sealing ring.
- Liquidtight/Raintight/Oiltight/Concretetight
- UL Listed NEMA Type 4 when installed into a NPT threaded entry or UL Listed conduit hub (sizes 1½" and larger require thread sealant).
- Suitable for grounding through 1¼" Trade Size per NEC Section 250.118(7)
- For Trade Sizes 1¼" and larger, an internal or external equipment bonding conductor is required. See 4Q-L Series with external ground lug in Catalog Section GB.
- Suitable for use in the following Hazardous Locations:
Class I, Div. 2 per NEC 501.4(B)
Class I, Zone 2 per NEC 505.15(C)(2)
Class II, Div. 1 per NEC 502.4(A)(1)(e)
Class II, Div. 2 per NEC 502.4(B)(2)
Class III, Div. 1 per NEC 503.3(A)(2)
Class III, Div. 2 per NEC 503.3(B)
Intrinsically Safe per NEC 504.20
- Bonding Wedge Locknuts are recommended in Hazardous Locations. See 101 Series on Page DB8.
- Suitable for wet locations
- Long ferrule prevents pullout and tight bend conduit "pop-out"
- Reusable ferrule
- Inspection windows in ferrule to ensure full engagement
- See Page GC4 for our patented Ferrule Wrench which makes ferrule installation easy.

Material/Finish:

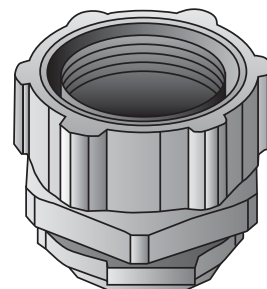
Malleable Iron Body and Nut, Zinc Electroplated. Steel Ferrule, Zinc Electroplated.

Optional Finish:

Available Hot Dip/Mechanically Galvanized, See 4Q-TG Series in Catalog Section GC.



Type 4Q-38 — Type 4Q-200

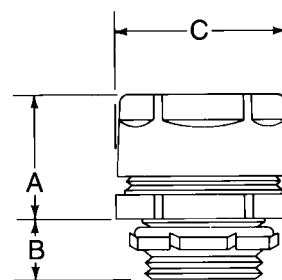


Type 4Q-250 — Type 4Q-600

Trade Size (inches)	Catalog Number	Insulated Throat Catalog Number	Dimensions in Inches		
			A	B	C
⅜ (½ KO)	4Q-38	4Q-38T	1	½	1⅝
½	4Q-50	4Q-50T	1	½	1¼
¾	4Q-75	4Q-75T	1⅝	½	1½
1	4Q-100	4Q-100T	1¼	⅝	1¾
1¼	4Q-125	4Q-125T	1⅝	⅝	2½
1½	4Q-150	4Q-150T	1⅝	⅝	2¾
2	4Q-200	4Q-200T	1½	⅝	3¼
2½	4Q-250	4Q-250T	2	1	4⅝
3	4Q-300	4Q-300T	2	1⅝	4⅞
3½	4Q-350	4Q-350T	2¼	1¼	4⅞
4	4Q-400	4Q-400T	2¼	1¼	6⅝
5	4Q-500*	4Q-500T*	2⅝	1⅝	7⅞
6	4Q-600*	4Q-600T*	2½	1⅝	8⅞

*UL Listing not applicable

*CSA Certification not applicable



Third Party Certification:



UL Listed: 11853



CSA Certified: 009795

Applicable Third Party Standards:

UL Standard: 514B

CSA Standard: C22.2 No. 18

NEMA: FB-1

Federal Spec: W-F-406E

Liquidtight Fittings

Type 4Q - 45° & 90°

Use:

To secure, ground and seal Liquidtight Flexible Metal conduit, Type LFMC, to boxes and enclosures.

Features:

- Tapered threaded male hub NPT.
- Compact, slim diameter with small turning radius.
- Furnished with locknut and KO sealing ring.
- Liquidtight/Raintight/Oiltight/Concretetight
- UL Listed NEMA Type 4 when installed into a NPT threaded entry or UL Listed conduit hub (sizes 1¼" and larger require thread sealant).
- Suitable for grounding through 1¼" Trade Size per NEC Section 250.118(7)
- For Trade Sizes 1½" and larger, an internal or external equipment bonding conductor is required. See 4Q-L Series with external ground lug in Catalog Section GB.
- Suitable for use in the following Hazardous Locations:
Class I, Div. 2 per NEC 501.4(B)
Class I, Zone 2 per NEC 505.15(C)(2)
Class II, Div. 1 per NEC 502.4(A)(1)(e)
Class II, Div. 2 per NEC 502.4(B)(2)
Class III, Div. 1 per NEC 503.3(A)(2)
Class III, Div. 2 per NEC 503.3(B)
Intrinsically Safe per NEC 504.20
- Bonding Wedge Locknuts are recommended in Hazardous Locations. See 101 Series on Page DB8.
- Suitable for wet locations.
- Long ferrule prevents pullout and tight bend conduit "pop-out".
- Reusable ferrule.
- Inspection windows in ferrule to ensure full engagement.
- See Page GC4 for our patented Ferrule Wrench which makes ferrule installation easy.

Material/Finish:


Malleable Iron Body and Nut, Zinc Electroplated. Steel Ferrule, Zinc Electroplated.

Optional Finish:

Available Hot-Dip/Mechanically Galvanized, See "4Q-TG" Series in Catalog Section GC.

Third Party Certification:

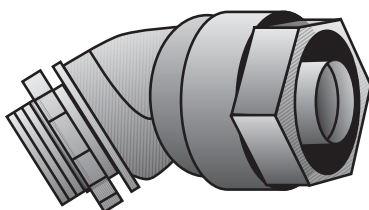
 UL Listed: 11853

 CSA Certified: 009795

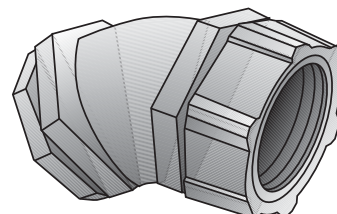
Applicable Third Party Standards:

UL Standard: 514B
CSA Standard: C22.2 No. 18
NEMA: FB-1
Federal Spec: W-F-406E

Effective December, 2007
Copyright 2007



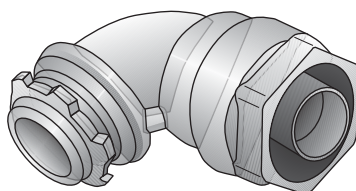
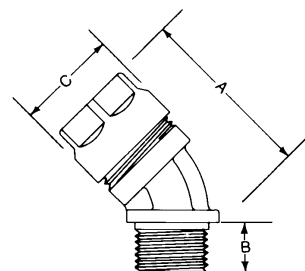
Type 4Q-438 — Type 4Q-4200



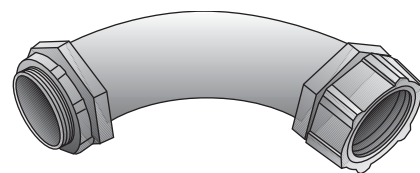
Type 4Q-4250 — Type 4Q-4500

Trade Size (inches)	Catalog Number	Insulated Throat Catalog Number	Dimensions in Inches		
			A	B	C Dia.
⅜ (½ KO)	4Q-438	4Q-438T	1⅞	⅞	1⅞
½	4Q-450	4Q-450T	1⅞	⅞	1¼
¾	4Q-475	4Q-475T	2¼	⅞	1½
1	4Q-4100	4Q-4100T	2⅞	½	1¾
1¼	4Q-4125	4Q-4125T	3¼	⅝	2¼
1½	4Q-4150	4Q-4150T	3⅞	⅝	2⅞
2	4Q-4200	4Q-4200T	4	⅝	3
2½	4Q-4250	4Q-4250T	5¼	1	4⅞
3	4Q-4300	4Q-4300T	6⅞	1⅞	4⅞
4	4Q-4400	4Q-4400T	7½	1¼	6⅞
5	4Q-4500	4Q-4500T	8	1¼	7⅞

•UL Listing not applicable



Type 4Q-938 — Type 4Q-9200



Type 4Q-9250 — Type 4Q-9500

Trade Size (inches)	Catalog Number	Insulated Throat Catalog Number	Dimensions in Inches			
			A	B	C	D
⅜ (½ KO)	4Q-938	4Q-938T	1⅞	⅞	1⅞	1⅞
½	4Q-950	4Q-950T	1⅞	⅞	1¼	1⅞
¾	4Q-975	4Q-975T	1⅞	½	1½	1½
1	4Q-9100	4Q-9100T	2	½	1¾	1⅞
1¼	4Q-9125	4Q-9125T	2¼	⅝	2¼	2⅞
1½	4Q-9150	4Q-9150T	2⅞	⅝	2⅞	2¼
2	4Q-9200	4Q-9200T	3½	¾	3	2⅞
2½	4Q-9250	4Q-9250T	7½	1	4⅞	7⅞
3	4Q-9300	4Q-9300T	8⅞	1⅞	4⅞	8½
4	4Q-9400	4Q-9400T	11⅞	1⅞	6⅞	11
5	4Q-9500	4Q-9500T	14	1¼	7⅞	14

•UL Listing not applicable

