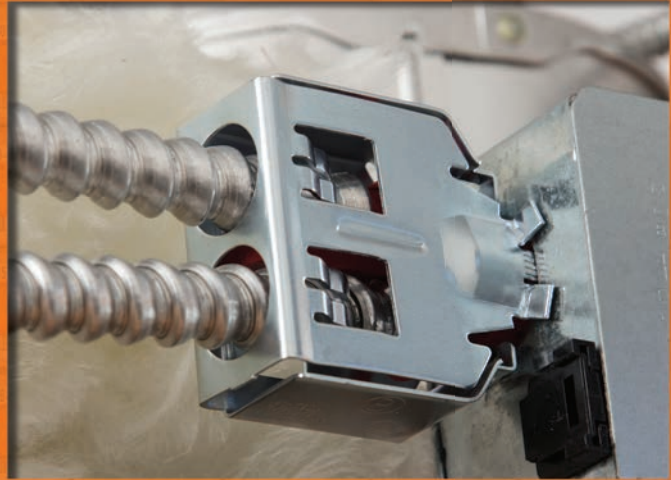


THE WALL OF ORANGE™

BUILT FOR WHAT MATTERS

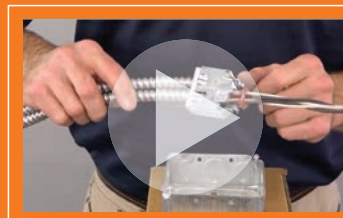


BRIDGEPORT PRODUCTS FOR MC CABLE



MAKE SWEET CONNECTIONS

 **BRIDGEPORT**
BPTFITTINGS.COM

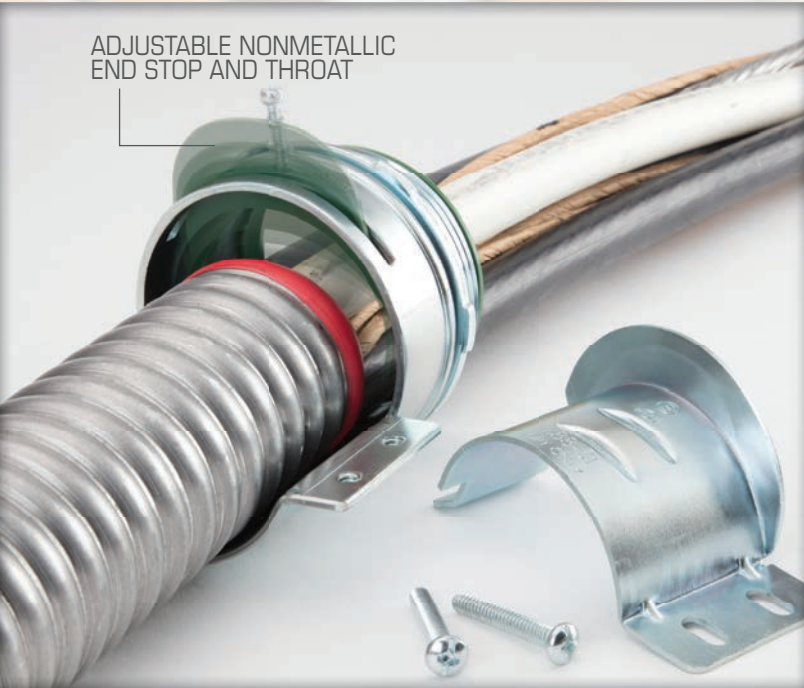


SEE THE DIFFERENCE
ORANGE MAKES™
[HTTP://QRS.LY/8K63SF7](http://qrs.ly/8K63SF7)

COMING SOON!

MC-FLEXFIT™ ADJUSTABLE MC CONNECTOR

ADJUSTABLE NONMETALLIC
END STOP AND THROAT



**INNOVATIVE AND LONGER ONE PIECE
ARMOR STOP AND INSULATED THROAT
PROVIDES GREATER CONDUCTOR PROTECTION**



- Unique two position, two screw hinge for quickest installation
- No need for separate bushings
- Heavy duty steel construction supports large-sized MC cable
- Fewer connectors handles more cable diameters
- cETLus Listed
- Patented

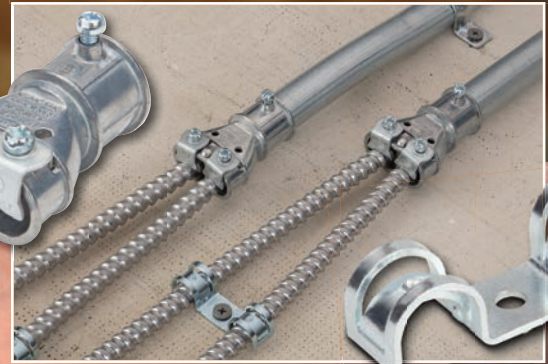
THE WALL OF ORANGE™

ORANGE CAN HANDLE IT

Go with proven products from
the Bridgeport Wall of Orange.
They can take tough.

MAKE THE S

EMT TO MC CABLE TRANSITION WITH DUPLEX STRAP



4157-DC MIGHTY-MERGE®
COMBINATION COUPLINGS

USD-4461 MIGHTY-HOLD®
DUPLEX UNIVERSAL STRAPS

PREFABRICATED MULTIPLE LIGHTING CONNECTIONS

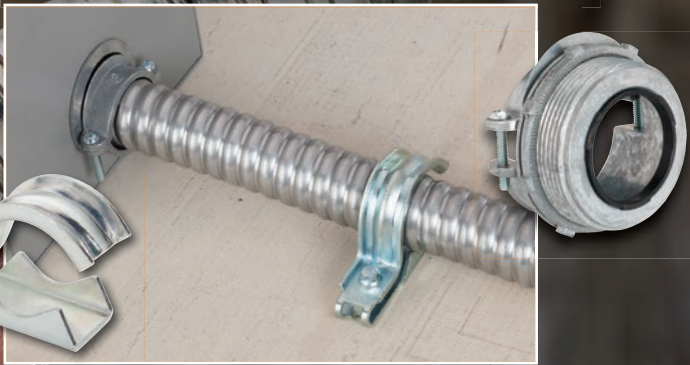


4457-DC MIGHTY-MERGE®
MULTI PORT COMBINATION
COUPLINGS

590-DC2 CABLE SNAP
CONNECTORS

SWEETEST CONNECTIONS

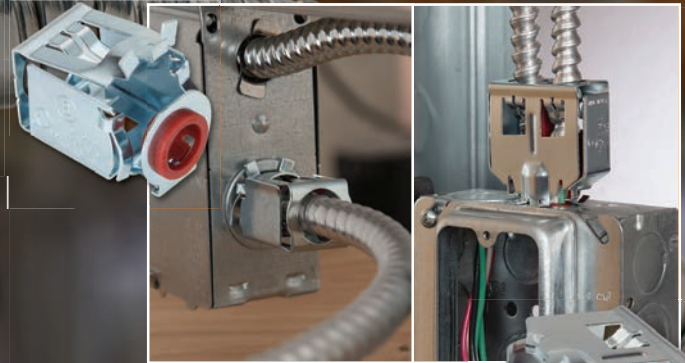
MC FEEDER CONNECTION WITH ADJUSTABLE CLAMP STRAP



680 SERIES TWO SCREW STRAP CONNECTORS

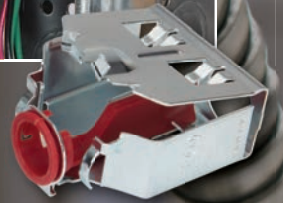
UCS SERIES MIGHTY-HOLD® UNIVERSAL CLAMP STRAPS

SINGLE AND DUPLEX STEEL QUICK INSTALL CONNECTIONS



AMC-50QI E-Z LOCK™ CONNECTORS

AMC-52QI E-Z LOCK™ DUPLEX CONNECTORS



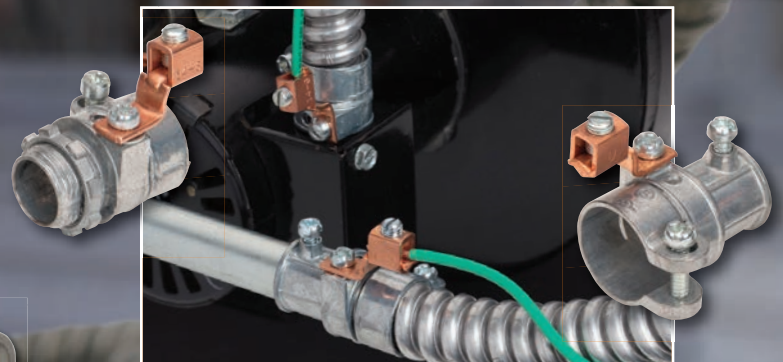
JACKETED MC CABLE CONNECTION AND SUPPORT



595 SERIES MIGHTY-SEAL® POLYOLEFIN COATED MC CONNECTORS

USS SERIES MIGHTY-HOLD® STAINLESS STEEL STRAPS

EQUIPMENT GROUNDED TRANSITION AND FLEX CONNECTION



281-DCG SQUEEZE TRANSITION COUPLINGS WITH GROUNDING LUG

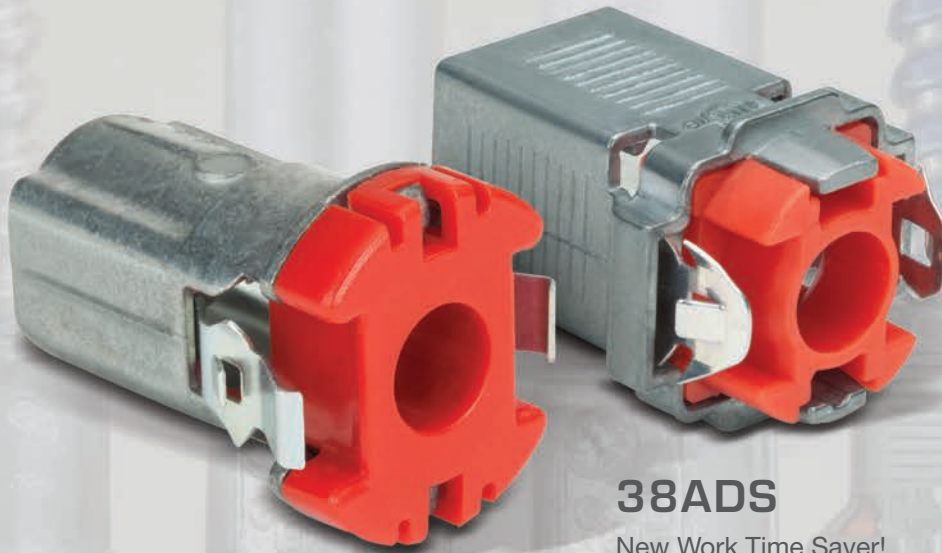
407-DC2G SQUEEZE CONNECTORS WITH GROUNDING LUG



LEARN MORE ABOUT MC & FMC FITTINGS VISIT: BPTFITTINGS.COM/MCPRODS

QUICK INSTALL SOLUTIONS IN ZINC

QUALITY, VALUE AND INNOVATION.

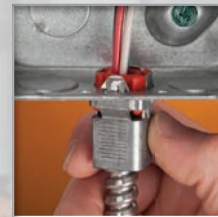


38ADS

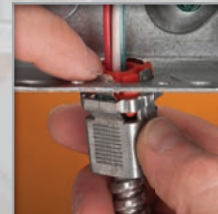
New Work Time Saver!

**Double-Snap Connectors
No Tools Required!**

- Simple and Fast
- Reusable
- Robust Insulated Throat
- cULus Listed



**SNAP IN
BOX**



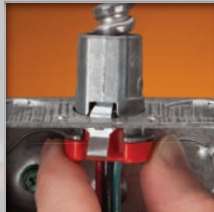
**EASY,
NO TOOL
REMOVAL**

38ACDS

Old Work Problem Solver!



SNAP IN CABLE



SNAP IN BOX



**EASY, NO TOOL
REMOVAL**

Zinc Die Cast / Insulated Throat – 105°C

Catalog Number	K.O. Size	Flex Trade Size	AC/MC Cable Range		Unit Qty.	Std. Pkg. Qty.
			Min.	Max.		
38ACDS	1/2"	3/8"	14/2 (.40")	10/3 (.63")	50	500
38ADS	1/2"	3/8"	14/2 (.40")	10/3 (.63")	50	500

3838ASP



**WHIPPER-SNAP®
DUPLEX CONNECTORS**



- Double snap in
- Easy removal from the box
- Reuseable
- cULus Listed
- Patented

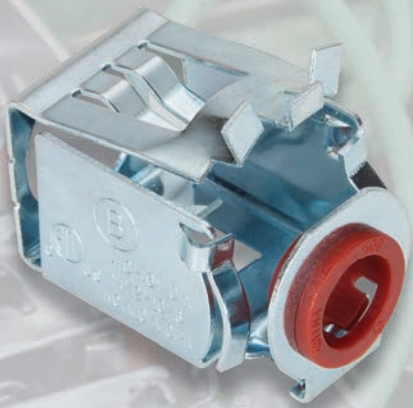
Zinc Die Cast / Insulated Throat – 105°C

Catalog Number	K.O. Size	Flex Trade Size	AC/MC Cable Range		Unit Qty.	Std. Pkg. Qty.
			Min.	Max.		
3838ASP	1/2"	3/8"	14/2 (.38")	10/2 (.59")	20	200

QUICK INSTALL SOLUTIONS IN STEEL

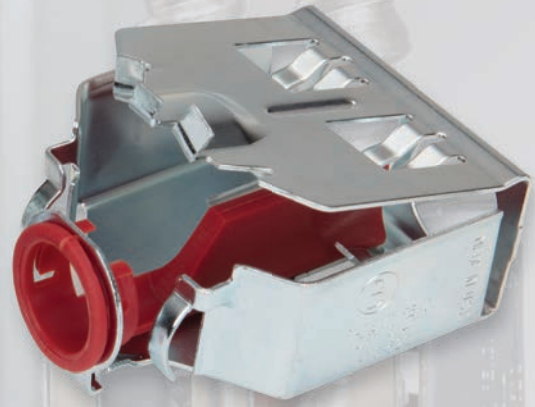


50% LESS TIME. 100% LESS TOOLS.



**AMC-50QI
E-Z LOCK™
QUICK INSTALL
CONNECTORS**

- Lever action
- Easy in; Easy out
- Rectangular design requires less effort to install
- No Tools Required



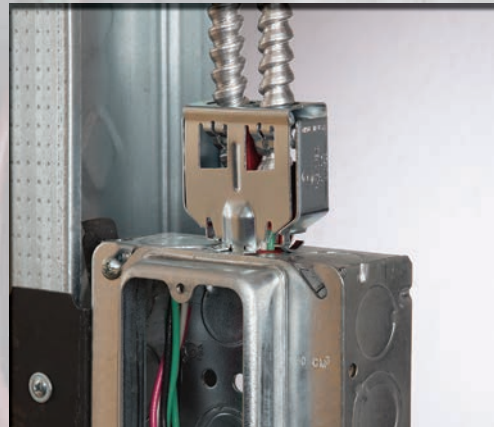
**AMC-52QI
E-Z LOCK™
QUICK INSTALL
DUPLEX CONNECTORS**

- Open pass-through eliminates damage to conductors
- Prefab alternative
- Made in the USA
- Patent Pending



Zinc Plated Steel

Catalog Number	K.O. Size	Flex Trade Size	AC/MC Cable Range Min. Max.	Unit Qty.	Std. Pkg. Qty.
AMC-50QI	1/2"	3/8"	14/2 (.40") 10/3 (.61")	50	500



Zinc Plated Steel

Catalog Number	K.O. Size	Flex Trade Size	AC/MC Cable Range Min. Max.	Unit Qty.	Std. Pkg. Qty.
AMC-52QI	1/2"	3/8"	14/2 (.40") 10/2 (.59")	25	250

FOR MORE INFORMATION, VISIT: WWW.BPTFITTINGS.COM

AC/MC Selection Chart

Catalog Number	UPC Number	Trade Size	K.O. Size	Cable
----------------	------------	------------	-----------	-------

DIE CAST SQUEEZE CONNECTORS

403-DC2	15403	3/8"	1/2"	12/3 thru 10/3 (.58"-.61") AC/MC
---------	-------	------	------	----------------------------------

DIE CAST SQUEEZE CONNECTORS WITH GROUNDING LUG

407-DC2G	17407	1/2"	1/2"	.86"-.92" AC/HCF, FMC
----------	-------	------	------	-----------------------

DIE CAST STRAP TYPE CONNECTORS

560-DC2*	15560	3/8"	1/2"	14/4 to 10/4 (.44"-.61") AC/MC/MCI-A
561-DC2*	15561	3/4"	3/4"	12/4 thru 8/4 (.61"-.87") AC/MC
560-DCI2	16560	3/8"	1/2"	14/4 to 10/4 (.43"-.61") AC/MC/MCI-A
561-DCI2*	16561	3/4"	3/4"	AC/MC: 12/4 thru 8/4 (.61"-.87") AC/MC
560-MCIA2	72560	3/8"	1/2"	14/2 to 10/4 (.38"-.61") MCI-A
BL-17*	15567	1/2"	1/2"	8/3 AC90, 8/3 or 6/3 MCI-A
BL-17I*	16567	1/2"	1/2"	8/3 AC90, 8/3 or 6/3 MCI-A
BL-18	15568	3/4"	3/4"	6/3 AC90
BL-18I	16568	3/4"	3/4"	6/3 AC90
BL-19	15569	1"	1"	3/3 AC90
BL-19I	16569	1"	1"	3/3 AC90

DIE CAST 1 OR 2 SCREW CONNECTORS

501-DC2*	15501	3/8"	1/2"	14/2-10/3 Steel MC/MCI-A .43"-.61" Steel or AL AC
545-DC2*	15545	3/8"	1/2"	14/2 thru 10/3 (.44"-.61") AC/MC
563-DC2	15563	3/8"	1/4"	14/2-12/2 AC/MC/NM
565-DC2	15565	3/8"	1/2"	14/2 to 10/3 (.38"-.53") MC/MCI-A
566-DC2	15566	3/8"	1/2"	14/4 to 10/3 (.44"-.53") ALMC/MCI-A
845SP	70501	3/8"	1/2"	12/2 to 10/4 (.43"-.61") AC/MC/MCI-A
840SP*	70566	3/8"	1/2"	14/2 to 10/3 (.44"-.61") AC/MC/MCI-A

MALLEABLE IRON SINGLE SCREW CONNECTORS

403-I*	10403	3/8"	1/2"	14/4 to 6/3 AC/MC/MCI-A
--------	-------	------	------	-------------------------

DIE CAST LOW PROFILE "U" SHAPED STRAP CONNECTORS

SG38ASP*	08570	3/8"	1/2"	14/4 to 10/3 (.43"-.61") AC/MC/MCI-A
570-DC2*	15570	3/8"	1/2"	14/2 to 10/3 (.38"-.61") AC/MC/MCI-A
570-DCI2*	16570	3/8"	1/2"	14/4 to 10/3 (.38"-.61") AC/MC/MCI-A

DIE CAST COLOR-CODED LOW PROFILE CONNECTORS

570-GI*	75706	3/8"	1/2"	14/2 to 10/3 (.38"-.61") HCF/AC (Green color)
570-RI*	75708	3/8"	1/2"	18/2 to 12/4 (.38"-.61") Fire Alarm MC (Red color)



403-DC2



407-DC2G



560-DC2



561-DCI2



BL-17



501-DC2



545-DC2



563-DC2



565-DC2



566-DC2



840SP



845SP



403-I



SG38ASP



570-DC2



570-DCI2

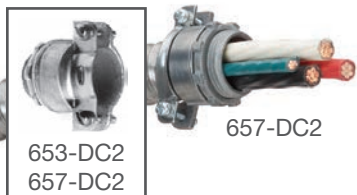


570-RI



570-GI
570-G/RI

Items marked with an * are also Listed for use with MC-PCS cable.



Catalog Number	UPC Number	Trade Size	K.O. Size	Cable
----------------	------------	------------	-----------	-------

DIE CAST 2 SCREW CONNECTORS

653-DC2*	15653	1/2"	1/2"	8/2-6/4 (.675"-.90") AC
655-DC2	15655	3/4"	3/4"	6/3-4/3 (.85"-1.1") AC/MC
657-DC2	15657	1"	1"	4/3 to 1/3 (1.03"-1.31") AC/MC

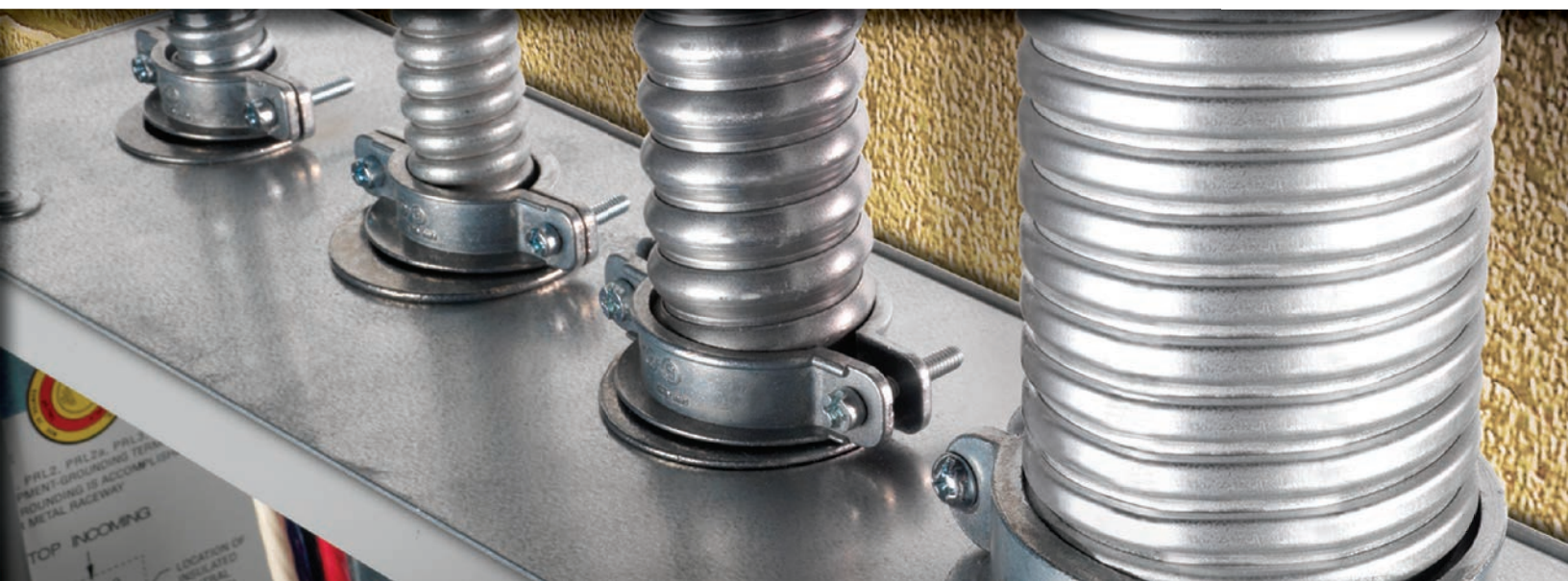
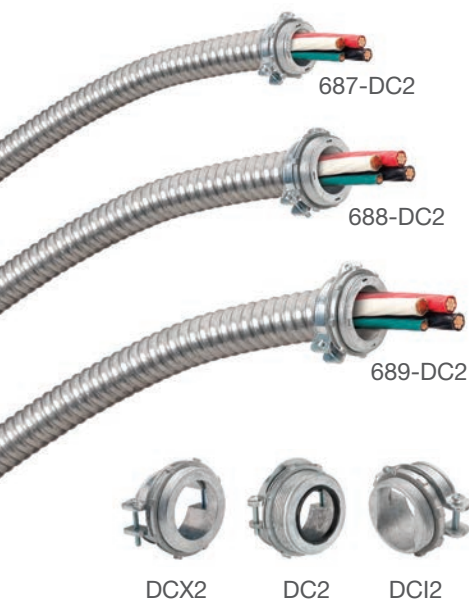


ADJUSTABLE END STOP MC-FLEXFIT™ CONNECTORS

683-UI	02683	1"	1"	.78"-1.12" MC
684-UI	02684	1 1/4"	1 1/4"	1.00"-1.46" MC
685-UI	02685	1 1/2"	1 1/2"	1.36"-1.77" MC
686-UI	02886	2"	2"	1.70"-2.20" MC
687-UI	02687	2 1/2"	2 1/2"	2.10"-2.70" MC
688-UI	02688	3"	3"	2.63"-2.90" MC
688-UIX	02689	3"	3"	2.90"-3.30" MC

DIE CAST LARGE SIZE 2 SCREW, STRAP TYPE CONNECTORS

682-DC2*	15682	3/4"	1"	3 #12 to 3 #6 (.525"-.875") AC/MC
683-DC2	15683	1"	1"	3 #4 to 4 #3 (.875"-1.04") MC
683-DCI2	16683	1"	1"	3 #6 to 3 #3 (.75"-1.04") MC
683-DCX2	15683	1"	1"	3 #4 to 4 #3 (.88"-1.04") AC/MC
684-DC2	15684	1 1/4"	1 1/4"	3 #1 to 4 #2 (1.1"-1.25") MC
684-DCX2	15684	1 1/4"	1 1/4"	3 #1 to 4 #2 (1.1"-1.25") AC/MC
685-DC2	15685	1 1/2"	1 1/2"	3 #2/0 to 4 #1/0 (1.25"-1.5") MC
685-DCX2	15685	1 1/2"	1 1/2"	3 #2/0 to 4 #1/0 (1.25"-1.5") AC/MC
686-DC2	15686	2"	2"	3 #350 to 4 #250 (1.75"-2.0") MC
686-DCX2	25686	2"	2"	3 #4/0 to 4 #250 (1.5"-1.85") MC
687-DC2	15687	2 1/2"	2 1/2"	3 #500 to 4 #400 (2.0"-2.5") MC
687-DCX2	15687	2 1/2"	2 1/2"	3 #500 to 4 #400 (2.0"-2.5") AC/MC
688-DC2	15688	3"	3"	3 #600 to 4 #700 (2.375"-3.0") MC
688-DCX2	15688	3"	3"	3 #600 to 4 #700 (2.38"-3.0") AC/MC
689-DC2	15689	3 1/2"	3 1/2"	4 #700 to 4 #750 (2.75"-3.50") MC
689-DCX2	15689	3 1/2"	3 1/2"	4 #700 to 4 #750 (2.75"-3.5") AC/MC





683-XM

Catalog Number	UPC Number	Trade Size	K.O. Size	Cable
----------------	------------	------------	-----------	-------

**MALLEABLE IRON (REGULAR OPENING)
4 SCREW, STRAP TYPE CONNECTORS**

683-XM	00683	1"	1"	3 # 4 to 4 #3 (.81"-1.05") AC/MC
684-XM	00684	1 1/4"	1 1/4"	3 #1 to 4 #2 (1.05"-1.27") AC/MC
685-XM	00685	1 1/2"	1 1/2"	3 #2/0 to 4 #1/0 (1.27"-1.4") AC/MC
686-XM	00686	2"	2"	3-4/0 to 3 #250 (1.4"-1.94") AC/MC
687-XM	00687	2 1/2"	2 1/2"	3 #500 to 4 #400 (1.94"-2.40") AC/MC
688-XM	00688	3"	3"	3 #600 to 4 #700 (2.4"-2.9") AC/MC
689-XM	00689	3 1/2"	3 1/2"	4 #700 to 4 #750 (2.6"-3.2") AC/MC



801-DC2
808-DC2

802-DC2
802-MCIA2
851-DC2



802SP
851SP

DIE CAST 90° CONNECTORS

801-DC2*	15801	3/8"	1/2"	12/2 to 10/3 (.45"- .625") MC
801-DCI2*	16801	3/8"	1/2"	12/2 to 10/3 (.45"- .625") MC
802-MCIA2	75802	3/8"	1/2"	(.42"- .55") MC/MCI-A
802-DC2*	15802	3/8"	1/2"	12/2 to 10/3 (.48"- .58") AC/MC
802-DCI2	16802	3/8"	1/2"	12/2 to 10/3 (.48"- .58") AC/MC
802SP*	70802	3/8"	1/2"	12/2 to 10/3 (.48"- .58") AC/MC



830-DC2



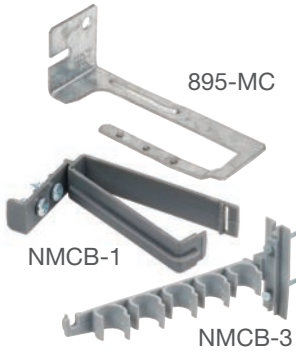
850SP



84690SP

DIE CAST 90° CONNECTORS

804-DC2	15804	1/2"	1/2"	8/4 to 6/3 (.75"- .875") MC
804-DCI2	16804	1/2"	1/2"	8/4 to 6/3 (.75"- .875") MC
806-DC2	15806	3/4"	3/4"	4/2 to 4/3 (.875"-1.0") MC
806-DCI2	16806	3/4"	3/4"	4/2 to 4/3 (.875"-1.0") MC
807-DC2	15807	1"	1"	1.187" to 1.312" MC
807-DCI2	16807	1"	1"	1.187" to 1.312" MC
808-DC2	15808	1 1/4"	1 1/4"	1.500" to 1.625" MC
808-DCI2	16808	1 1/4"	1 1/4"	1.500" to 1.625" MC
830-DC2	15830	3/8"	1/2"	14/2 to 10/3 (.44"- .61") AC
850SP	70801	3/8"	1/2"	12/2 to 10/3 (.55"- .61") MC
851ASP	08851	1/2"	1/2"	1/2" FMC
851-DC2	15851	1/2"	1/2"	1/2" FMC
851-DCI2	16851	1/2"	1/2"	1/2" FMC
851SP	70851	1/2"	1/2"	1/2" FMC
84690SP	70830	3/8"	1/2"	14/2 to 10/3 (.42"- .61") AC/MC/MCI-A



Catalog Number	UPC Number	Trade Size	K.O. Size	Cable
----------------	------------	------------	-----------	-------

CABLE BRACKETS

895-MC	02895			14/2 to 12/3 (.475"-.59") AC/MC
NMCB-1	40747			14/2, 12/2 NM
NMCB-3	40767			14/2, 10/3 NM

STEEL 1-HOLE STRAPS

890-MC	02890			14/2 to 12/2 (.475"-.525") AC/MC/MCI-A
891-MC	02891			14/3 to 12/3 (.54"-.59") AC/MC/MCI-A
900F	02970			12/4 to 10/3 (.56"-.61") AC/MC/MCI-A

ANTI-SHORT BUSHINGS "RED HEADS"

1000	01000	0		14/2 to 12/2 AC/MC/MCI-A
1001	01001	1		14/4 to 4/1 AC/MC/MCI-A
1002	01002	2		12/4 to 2/1 AC/MC/MCI-A
1003	01003	3		10/4 to 1/1 AC/MC/MCI-A
1004	01004	4		8/4 to 6/4 AC/MC/MCI-A
1005	01005	5		---
1006	01006	6		---
1007	01007	7		---
1008	01008	8		---

UNIVERSAL STEEL 1-HOLE STRAPS

US-6171	02894	3/8"		10/4 to 8/3 AC/MC/MCI-A (.617"-.710")
USD-4461	02896	3/8"		14/2 to 10/3 AC/MC/MCI-A (.425"-.610")
USD-6171	02897	3/8"		10/4 to 8/3 AC/MC/MCI-A (.617"-.710")





Catalog Number	UPC Number	Trade Size	K.O. Size	Cable
----------------	------------	------------	-----------	-------

UCS, UCSC AND UCSS CLAMP STRAPS

UCS-5075	02932	1/2"-3/4"	.710"-1.100"	AC/MC/MCI-A/HCF/JMC
UCS-75100	02933	3/4"-1"	.925"-1.320"	AC/MC/MCI-A/HCF/JMC
UCS-100125	02934	1"-1 1/4"	1.158"-1.660"	AC/MC/MCI-A/HCF/JMC
UCS-125150	02935	1 1/4"-1 1/2"	1.505"-1.950"	AC/MC/MCI-A/HCF/JMC
UCS-150200	02936	1 1/2"-2"	1.735"-2.450"	AC/MC/MCI-A/HCF/JMC

Polyolefin Coated Steel

UCSC-5075	14932	1/2"-3/4"	.710"-1.100"	AC/MC/MCI-A/HCF/JMC
UCSC-75100	14933	3/4"-1"	.925"-1.320"	AC/MC/MCI-A/HCF/JMC
UCSC100125	14934	1"-1 1/4"	1.158"-1.660"	AC/MC/MCI-A/HCF/JMC
UCSC125150	14935	1 1/4"-1 1/2"	1.505"-1.950"	AC/MC/MCI-A/HCF/JMC
UCSC150200	14936	1 1/2"-2"	1.735"-2.450"	AC/MC/MCI-A/HCF/JMC

Stainless Steel

UCSS-5075	02942	1/2"-3/4"	.710"-1.100"	AC/MC/MCI-A/HCF/JMC
UCSS-75100	02943	3/4"-1"	.925"-1.320"	AC/MC/MCI-A/HCF/JMC
UCSS100125	02944	1"-1 1/4"	1.158"-1.660"	AC/MC/MCI-A/HCF/JMC
UCSS125150	02945	1 1/4"-1 1/2"	1.505"-1.950"	AC/MC/MCI-A/HCF/JMC
UCSS150200	02946	1 1/2"-2"	1.735"-2.450"	AC/MC/MCI-A/HCF/JMC





4157-DC



4156-DC

4357-DC



4457-DC

5157-DC



280-DC,
280-DCX

280SPMB,
281SPMB



281-DCG

Catalog Number	UPC Number	Cable/Conduit
----------------	------------	---------------

COMBINATION EMT - AC/MC COUPLINGS

4157-DC	94157	14/2 thru 10/3 to 3/4" EMT (.43"-.61") AC/MC
---------	-------	--

COMBINATION COUPLINGS

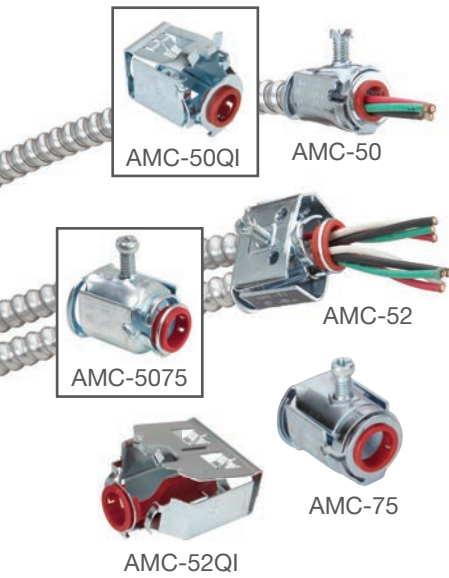
4057-DC	94057	14/2 thru 10/3 to 3/4" EMT (.43"-.61") AC/MC/MCI-A
4058-DC	94058	10/4 thru 6/4 to 3/4" EMT (.63"-.89") AC/MC/MCI-A
4156-DC	94156	14/2 thru 12/2 to 1/2" EMT (.43"-.61") AC/MC/MCI-A
4357-DC	94357	14/2 thru 12/2 to 1" EMT (.43"-.61") AC/MC/MCI-A
4457-DC	94457	14/2 thru 12/2 to 1" EMT (.43"-.61") AC/MC/MCI-A
5157-DC	95157	14/2 thru 12/2 to 1" EMT (.43"-.61") AC/MC/MCI-A

TRANSITION COUPLINGS

280-DCX	09279	14/2 thru 10/3 to 1/2" EMT (.43"-.61") AC/MC/MCI-A
280SP	70280	14/2 thru 10/3 to 1/2" EMT (.43"-.61") AC/MC/MCI-A
280SPMB	71280	14/2 thru 10/3 to 1/2" EMT (.43"-.61") AC/MC/MCI-A
281SPMB	71281	10/4 thru 8/3 to 3/4" EMT (.61"-.72") AC/MC/MCI-A

SQUEEZE TRANSITION COUPLING WITH GROUNDING LUG

281-DCG	17281	1/2" FMC to 1/2" EMT
---------	-------	----------------------

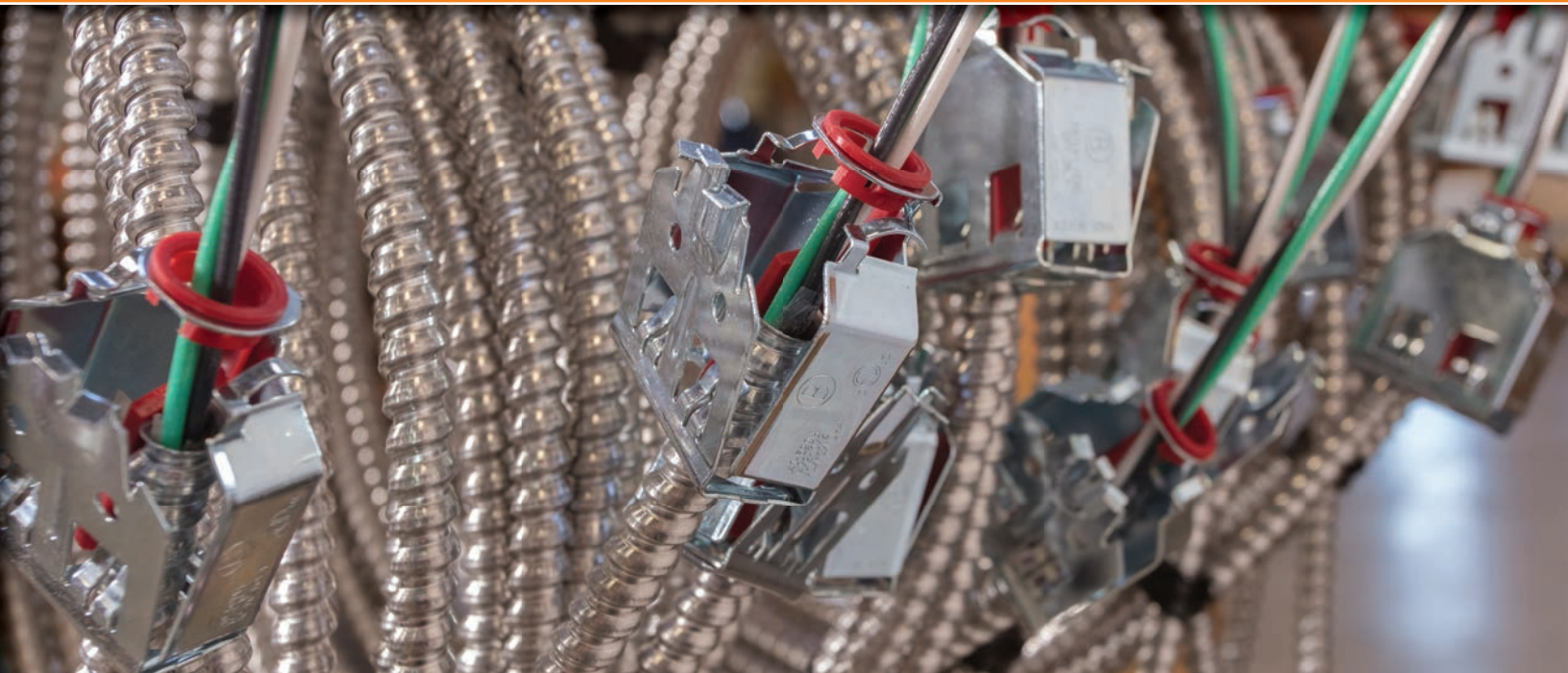


Catalog Number	UPC Number	Trade Size	K.O. Size	Cable
----------------	------------	------------	-----------	-------

STEEL E-Z LOCK™ SINGLE & DUPLEX CONNECTORS

AMC-50*	20570	3/8"	1/2"	14/4 to 10/4 (.40"-.62") AC/MC/MCI-A
AMC-50QI*	21570	3/8"	1/2"	14/2 to 10/3 (.40"-.62") AC/MC/MCI-A
AMC-5075*	20577	1/2"	1/2"	8/3 to 6/2 (.62"-.92") AC/MC/MCI-A
AMC-52	20580	3/8"	1/2"	14/4 to 10/4 (.43"-.62") AC/MC/MCI-A
AMC-75*	20571	3/4"	3/4"	10/3 to 8/4 (.566"-.81") AC/MC/HCF
AMC-52QI	21580	3/8"	1/2"	14/2 to 10/2 (.40"-.61") AC/MC/MCI-A





571-DC2
573-DC2



571-S
573-S

Catalog Number	UPC Number	Trade Size	K.O. Size	Cable
----------------	------------	------------	-----------	-------

“U” SHAPED STRAP CONNECTORS

571-DC2*	15571	1/2"	1/2"	8/3 to 6/3 (.70"-.855") AC/MC/MCI-A
571-DCI2*	16571	1/2"	1/2"	8/3 to 6/2 (.63"-.78") AC/MC/MCI-A
572-DC2	15572	3/4"	3/4"	4/3 to 3/4 (.948"-1.035") AC/MC
572-DCI2	16572	3/4"	3/4"	4/3 to 3/4 (.948"-1.035") AC/MC
573-DC2	15573	1"	1"	2/3 to 2/0-3 (1.18"-1.35") AC/MC
573-DCI2	16573	1"	1"	2/3 to 2/0-3 (1.18"-1.35") AC/MC
571-S	00571	1/2"	1/2"	8/3 to 6/3 (.701"-.855") AC/MC/MCI-A
571-SI*	10571	1/2"	1/2"	8/3 to 6/2 (.63"-.78") AC/MC/MCI-A
572-S	00572	3/4"	3/4"	4/3 to 3/4 (.945"-1.12") AC/MC
572-SI	10572	3/4"	3/4"	4/3 to 3/4 (.945"-1.12") AC/MC
573-S	00573	1"	1"	2/3 to 2/0-3 (1.18"-1.35") AC/MC
573-SI	10573	1"	1"	2/3 to 2/0-3 (1.18"-1.35") AC/MC

DIE CAST SNAP-IN CONNECTORS

38ADS	08390	3/8"	1/2"	14/2 to 10/3 (.40"-.63") AC/MC/MCI-A/HCF
Double Snap				
38ACDS	08380	3/8"	1/2"	14/2 to 10/3 (.40"-.63") AC/MC/MCI-A/HCF
Double Snap for Old Work				
590-DC2	15590	3/8"	1/2"	14/2 to 10/3 (.43"-.61") AC/MC
590-DCI2*	16590	3/8"	1/2"	14/2 to 10/3 (.43"-.61") AC/MC



38ACDS



38ADS



590-DCI2



Catalog Number	UPC Number	Trade Size	K.O. Size	Cable
----------------	------------	------------	-----------	-------

PVC JACKETED MC AND TECK CABLE CONNECTORS

595-DC2	15595	3/8"	1/2"	12/3 thru 10/3 PVC Jacketed MC or 14/2,14/3 or 12/2 TECK Cable with Armor and Jacket (.50"- .61")
595-DC12	16595	3/8"	1/2"	12/3 thru 10/3 PVC Jacketed MC or 14/2, 14/3 or 12/2 TECK Cable with Armor and Jacket (.50"- .61")
596-DC2	15596	1/2"	1/2"	10/3 thru 8/3 PVC Jacketed MC or 14/2 thru 10/3 TECK Cable with Armor and Jacket (.685"- .80")
596-DC12	16596	1/2"	1/2"	10/3 thru 8/3 PVC Jacketed MC or 14/2 thru 10/3 TECK Cable with Armor and Jacket (.685"- .80")
895-DC2**	15895	3/8"	1/2"	12/3 thru 10/3 PVC Jacketed MC or 14/2,14/3 or 12/2 TECK Cable with Armor and Jacket (.50"- .61")
895-DC12**	16895	3/8"	1/2"	12/3 thru 10/3 PVC Jacketed MC or 14/2,14/3 or 12/2 TECK Cable with Armor and Jacket (.50"- .61")

Polyolefin Coated

595-DC2C	14895	3/8"	1/2"	12/3 thru 10/3 PVC Jacketed MC or 14/2,14/3 or 12/2 TECK Cable with Armor and Jacket (.50"- .61")
596-DC2C	14596	3/8"	1/2"	10/3 thru 8/3 PVC Jacketed MC or 14/2 thru 10/3 TECK Cable with Armor and Jacket (.685"- .80")
895-DC2C**	14895	3/8"	1/2"	12/3 thru 10/3 PVC Jacketed MC or 14/2,14/3 or 12/2 TECK Cable with Armor and Jacket (.50"- .61")

** 90 Degree





Catalog Number	UPC Number	Trade Size	K.O. Size	Cable
----------------	------------	------------	-----------	-------

STAINLESS STEEL STRAPS FOR PVC AND TECK JACKETED MC



USS-6171

USS-6171	02893	3/8"	1/2"	(.61"-.71") AC/MC/PVC-MC
----------	-------	------	------	--------------------------

DIE CAST DUPLEX CONNECTORS



601-DC2



830-DC2



3838ASP



3838SP



SG3838ASP

601-DC2	15601	3/8"	1/2"	14/2 to 10/4 (.375"-.625") AC/MC/MCI-A
621-DC2*	15621	3/8"	3/4"	14/4 to 8/3 (.44"-.70") AC/MC/MCI-A
691-DC2	15691	3/8"	1/2"	14/2 to 10/3 (.42"-.61") AC/MC/MCI-A
830-DC2	15830	3/8"	1/2"	14/2 to 10/3 (.44"-.61") AC/MC
3838ASP	08690	3/8"	1/2"	14/2 to 10/2 (.38"-.59") AC/MC/MCI-A
3838SP	70690	3/8"	1/2"	14/2 to 10/2 (.38"-.59") AC/MC/MCI-A
SG3838ASP	08691	3/8"	1/2"	14/2 to 10/3 (.42"-.61") AC/MC/MCI-A

Suggested Fittings for Non-PVC Jacketed MC Cable *

3 CONDUCTORS WITH GROUND

Size (AWG or kcmil)	Bridgeport Connector
6-6-6-6	653-DC2
4-4-4-6	683-DC2
2-2-2-4	683-DC2
1-1-1-4	684-DC2
1/0-1/0-1/0-4	684-DC2
2/0-2/0-2/0-4	685-DC2
3/0-3/0-3/0-4	685-DC2
4/0-4/0-4/0-2	686-DCX2
250-250-250-2	686-DCX2
300-300-300-1	686-DC2
350-350-350-1	686-DC2
400-400-400-1	687-DC2
500-500-500-1	687-DC2
500-500-500-2/0	687-DC2
500-500-500-250	688-DC2
600-600-600-1/0	687-DC2
750-750-750-1/0	688-DC2
750-750-750-3/0	688-DC2

4 CONDUCTORS WITH GROUND

Size (AWG or kcmil)	Bridgeport Connector
6-6-6-6-6	653-DC2
4-4-4-4-6	683-DC2
2-2-2-2-4	657-DC2
1-1-1-1-4	684-DC2
1/0-1/0-1/0-1/0-4	685-DC2
2/0-2/0-2/0-2/0-4	685-DC2
3/0-3/0-3/0-3/0-4	686-DCX2
4/0-4/0-4/0-4/0-2	686-DCX2
250-250-250-250-1	686-DC2
300-300-300-300-1	687-DC2
350-350-350-350-1/0	687-DC2
400-400-400-400-3/0	687-DC2
500-500-500-500-3/0	687-DC2
500-500-500-500-250	687-DC2
600-600-600-600-3/0	688-DC2
600-600-600-600-400	688-DC2
750-750-750-750-3/0	688-DC2
750-750-750-750-500	689-DC2
900-900-900-900-250	689-DC2

*Check outside cable diameter with cable manufacturer to select the correct fitting.

Bridgeport MCI-A Cable Fittings

Cable Fitting	Enclosure Opening KO Size	Cable Outer Diameter (O.D.) Range	Cable Types Listed To: Note: Includes Steel and Aluminum	Healthcare Facility Cable	Flexible Metal Conduit Note: Includes Steel and Aluminum (RWFMC)	Recommended Cable Types & Notes Note: Verify with cable O.D. Includes Steel and Aluminum
38ADS	1/2"	.40-.63	AC/MC/MCI-A	HCF	3/8" FMC/RWFMC	14/2 - 10/3
38ACDS	1/2"	.40-.63	AC/MC/MCI-A	HCF	3/8" FMC/RWFMC	14/2 - 10/3
280DCX		.43-.61	AC/MC/MCI-A			14/2 - 10/3 to 1/2" EMT
280SP		.43-.61	AC/MC/MCI-A		3/8" FMC	14/2 - 10/3 to 1/2" EMT
280SPMB		.43-.61	AC/MC/MCI-A		3/8" FMC	14/2 - 10/3 to 1/2" EMT
281SPMB		.61-.72	AC/MC/MCI-A		3/8" FMC	10/4 - 8/3 to 3/4" EMT
281-DCG					1/2"	1/2" FMC to 1/2" EMT
3838ASP	1/2"	.38-.59	AC/MC/MCI-A	HCF/HCFMCI-A	3/8" FMC	14/2 - 10/2
3838SP	1/2"	.38-.59	AC/MC/MCI-A	HCF/HCFMCI-A	3/8" FMC	14/2 - 10/2
403-DC2	1/2"	.56-.61	AC/MC	HCF	3/8" FMC	12/3 - 10/3
403-I*	1/2"	.51-.835	AC/MC/MCI-A		3/8" FMC	14/4 - 6/3
407-DC2	1/2"	.86-.92	AC	HCF		
407-DCI2	1/2"	.86-.92	AC	HCF		
407-DC2G	1/2"	.86-.92	AC	HCF	1/2" FMC	
501-DC2*	1/2"	.43-.61	MC ONLY			14/2 - 10/3
545-DC2*	1/2"	.44-.61	AC/MC/MCI-A	HCF/HCFMCI-A		14/2 - 10/3
560-DC2*	1/2"	.44-.61	AC/MC/MCI-A	HCF/HCFMCI-A	3/8" FMC	12/2 - 10/4
560-DCI2	1/2"	.44-.61	AC/MC/MCI-A	HCF/HCFMCI-A	3/8" FMC	12/2 - 10/4
560-MCIA2	1/2"	.38-.61	MC/MCI-A	HCFMCI-A		14/2 - 10/3
561-DC2*	3/4"	.61-.87	AC/MC	HCF		10/4 - 8/3
561-DCI2*	3/4"	.61-.87	AC/MC	HCF		10/4 - 8/3
563-DC2	1/4"		AC/MC	HCF		14/2 - 12/2
565-DC2	1/2"	.38-.53	MC/MCI-A	HCFMCI-A		14/2 - 10/3
566-DC2	1/2"	.44-.53	AC/MC/MCI-A	HCF/HCFMCI-A		12/2 - 10/3
570-DC2*	1/2"	.38-.61	AC/MC/MCI-A	HCF/HCFMCI-A		14/2 - 10/3
570-DCI2*	1/2"	.38-.61	AC/MC/MCI-A	HCF/HCFMCI-A		14/2 - 10/3
570-DCR2	1/2"	.38-.61	AC/MC/MCI-A	HCF/HCFMCI-A		14/2 - 10/3
570-GI*	1/2"	.38-.61	AC/MC/MCI-A	HCF/HCFMCI-A		14/2 - 10/3
570-RI*	1/2"	.38-.61	AC/MC/MCI-A	HCF/HCFMCI-A		18/2 - 12/4
571-DC2*	1/2"	.70-.855	AC/MC/MCI-A	HCF/HCFMCI-A	1/2" FMC	8/3 - 6/3
571-DCI2*	1/2"	.70-.855	AC/MC/MCI-A	HCF/HCFMCI-A	1/2" FMC	8/3 - 6/3
571-S	1/2"	.701-.855	MC/MCI-A	HCFMCI-A	1/2" FMC	8/3 - 6/3
571-SI*	1/2"	.701-.855	MC/MCI-A	HCFMCI-A	1/2" FMC	8/3 - 6/3
572-DC2	3/4"	.945-1.035	MC		3/4" FMC	4/3 - 3/4
572-DCI2	3/4"	.948-1.035	MC		3/4" FMC	4/3 - 3/4
572-S	3/4"	0.945-1.04	MC		3/4" FMC	4/3
572-SI	3/4"	0.945-1.12	MC		3/4" FMC	4/3
573-DC2	1"	1.18-1.35	MC		1" FMC	2/3 - 3-2/0
573-DCI2	1"	1.18-1.35	MC		1" FMC	2/3 - 3-2/0
573-S	1"	1.18-1.35	MC		1" FMC	2/3 - 3-2/0
573-SI	1"	1.18-1.35	MC		1" FMC	2/3 - 3-2/0
590-DC2	1/2"	.43-.61	AC/MC/MCI-A	HCF/HCFMCI-A	3/8" FMC	14/2 - 10/3
590-DCI2*	1/2"	.43-.61	AC/MC/MCI-A	HCF/HCFMCI-A	3/8" FMC	14/2 - 10/3
595-DC2	1/2"	.50-.61	JMC/TECK90			12/2 - 10/3
595-DC2C	1/2"	.50-.61	JMC/TECK90			12/2 - 10/3
595-DCI2	1/2"	.50-.61	JMC/TECK90			12/2 - 10/3
596-DC2	1/2"	.61-.69	JMC/TECK90			10/4 - 8/3

Bridgeport MCI-A Cable Fittings

Cable Fitting	Enclosure Opening KO Size	Cable Outer Diameter (O.D.) Range	Cable Types Listed To: Note: Includes Steel and Aluminum	Healthcare Facility Cable	Flexible Metal Conduit Note: Includes Steel and Aluminum (RWFMC)	Recommended Cable Types & Notes Note: Verify with cable O.D. Includes Steel and Aluminum
596-DC2C	1/2"	.61-.69	JMC/TECK90			10/4 - 8/3
596-DCI2	1/2"	.61-.69	JMC/TECK90			10/4 - 8/3
601-DC2	1/2"	.375-.625	AC/MC/MCI-A	HCF/HCFMCI-A	3/8" FMC	14/2 - 10/3
621-DC2*	3/4"	.44-.70	AC/MC/MCI-A		3/8" FMC	14/4 - 8/3
653-DC2*	1/2"	.675-.90	AC	HCF	1/2" FMC	8/2 - 6/4
655-DC2	3/4"	.85-1.10	AC/MC	HCF	3/4" FMC	6/3 - 4/3
657-DC2	1"	1.03-1.31	AC/MC	HCF	1" FMC	4/3 - 1/3
683-UI	1"	.78-1.12	MC			
684-UI	1 1/4"	1.00-1.46	MC			
685-UI	1 1/2"	1.36-1.77	MC			
686-UI	2"	1.70-2.20	MC			
687-UI	2 1/2"	2.10-2.70	MC			
688-UI	3"	2.63-2.90	MC			
688-UIX	3"	2.90-3.30	MC			
682-DC2*	3/4"	.575-.875	AC/MC	HCF		10/3 - 6/4
683-DC2	1"	.875-1.04	MC			6/4 - 4/3
684-DC2	1-1/4"	1.1-1.25	MC			4/4 - 3/4
685-DC2	1-1/2"	1.25-1.5	MC			2/4 - 3-2/0
686-DC2	2"	1.75-2.00	MC			4-4/0 - 4-250 MCM
687-DC2	2-1/2"	2-2.5	MC			4-300 MCM - 4-500 MCM
688-DC2	3"	2.375-3	MC			4-500 MCM - 4-750 MCM
689-DC2	3-1/2"	2.75-3.50	MC			4-600 MCM - 4-750 MCM
683-DCI2	1"	.750-1.04	MC			6/4 - 4/3
684-DCI2	1-1/4"	1.1-1.25	MC			4/4 - 3/4
685-DCI2	1-1/2"	1.25-1.5	MC			2/4 - 3-2/0
686-DCI2	2"	1.75-2.00	MC			4-4/0 - 4-250 MCM
687-DCI2	2-1/2"	2-2.5	MC			4-300 MCM - 4-500 MCM
688-DCI2	3"	2.375-3	MC			4-500 MCM - 4-750 MCM
689-DCI2	3-1/2"	2.75-3.50	MC			4-600 MCM - 4-750 MCM
683-DCX2	1"	.875-1.04	MC			6/4 - 4/3
684-DCX2	1-1/4"	1.1-1.25	MC			4/4 - 3/4
685-DCX2	1-1/2"	1.25-1.5	MC			2/4 - 3-2/0
686-DCX2	2"	1.5-1.85	MC			3-4/0 - 4-250 MCM
687-DCX2	2-1/2"	2-2.5	MC			4-300 MCM - 4-500 MCM
688-DCX2	3"	2.375-3	MC			4-500 MCM - 4-750 MCM
689-DCX2	3-1/2"	2.75-3.50	MC			4-600 MCM - 4-750 MCM
683-XM	1"	0.81-1.05	AC/MC	HCF		6/4 - 4/3
684-XM	1-1/4"	1.05-1.27	AC/MC	HCF		4/4 - 3/4
685-XM	1-1/2"	1.27-1.4	AC/MC	HCF		4-2/O - 3-350 MCM
686-XM	2"	1.4-1.94	AC/MC	HCF		3-4/0 - 4-250 MCM
687-XM	2-1/2"	1.94-2.4	MC			4-300 MCM - 4-500 MCM
688-XM	3"	2.4-2.9	MC			4-500 MCM - 4-750 MCM
689-XM	3-1/2"	2.6-3.2	MC			4-600 MCM - 4-750 MCM
691-DC2	1/2"	.42-.61	AC/MC/MCI-A	HCF/HCFMCI-A	3/8" FMC	14/2 - 10/3
801-DC2*	1/2"	.45-.625	MC/MCI-A	HCFMCI-A	3/8" FMC	14/4 - 10/4
801-DCI2*	1/2"	.45-.63	AC/MC/MCI-A		3/8" FMC	14/4 - 10/4

Bridgeport MCI-A Cable Fittings

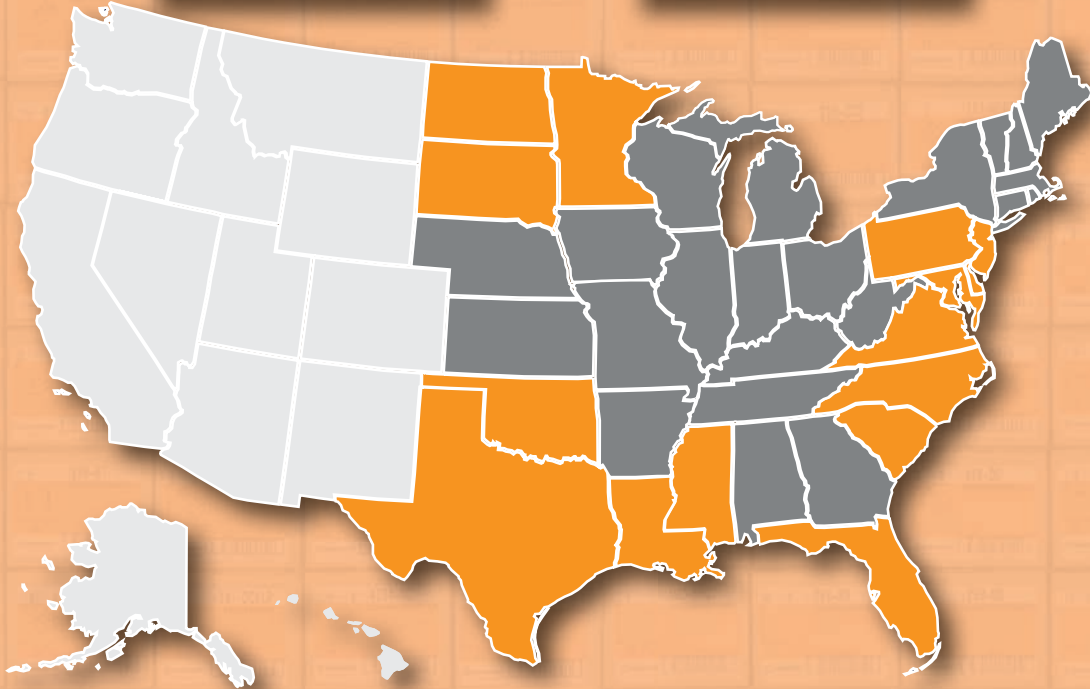
Cable Fitting	Enclosure Opening KO Size	Cable Outer Diameter (O.D.) Range	Cable Types Listed To: Note: Includes Steel and Aluminum	Healthcare Facility Cable	Flexible Metal Conduit Note: Includes Steel and Aluminum (RWFMC)	Recommended Cable Types & Notes Note: Verify with cable O.D. Includes Steel and Aluminum
802-DC2*	1/2"	.48-.58	AC/MC	HCF	3/8" FMC	12/2 - 10/3
802-DCI2	1/2"	.48-.58	AC/MC	HCF	3/8" FMC	12/2 - 10/3
802SP*	1/2"	.48-.58	AC/MC	HCF	3/8" FMC	12/2 - 10/3
802-MCIA2	1/2"	.42-.55	MC/MCI-A	HCFMCI-A		14/4 - 10/3
804-DC2	1/2"	.75-.875	MC		1/2" FMC	
804-DCI2	1/2"	.75-.875	MC		1/2" FMC	
806-DC2	3/4"	.875-1.00	MC		3/4" FMC	
806-DCI2	3/4"	.875-1.00	MC		3/4" FMC	
807-DC2	1"	1.187-1.312	MC		1" FMC	
807-DCI2	1"	1.187-1.312	MC		1" FMC	
808-DC2	1-1/4"	1.50-1.625	MC		1-1/4" FMC	
808-DCI2	1-1/4"	1.50-1.625	MC		1-1/4" FMC	
830-DC2	1/2"	.44-.61	AC	HCF	3/8" FMC	12/2 - 10/3
840SP*	1/2"	.44-.61	AC/MC/MCI-A	HCF/HCFMCI-A	3/8" FMC	14/4 - 10/3
845SP	1/2"	.43-.61	AC/MC/MCI-A	HCF/HCFMCI-A		14/2 - 10/3
84690SP	1/2"	.42-.61	AC/MC/MCI-A	HCF/HCFMCI-A	3/8" FMC	14/4 - 10/3
850SP	1/2"	.55-.61	AC/MC	HCF	3/8" FMC	12/2 - 10/3
851ASP	1/2"				1/2" FMC	
851-DC2	1/2"				1/2" FMC	
851-DCI2	1/2"				1/2" FMC	
851SP	1/2"				1/2" FMC	
895-DC2*	1/2"	.50-.61	JMC/TECK90			12/2 - 10/3
895-DC2C	1/2"	.50-.61	JMC/TECK90			12/2 - 10/3
895-DCI2*	1/2"	.50-.61	JMC/TECK90			12/2 - 10/3
4057-DC		.43-.61	AC/MC/MCI-A		3/8" FMC	14/2 - 10/3
4058-DC		.63-.89	AC/MC/MCI-A		1/2" FMC	10/4 - 6/4
4156-DC		.43-.52	AC/MC/MCI-A	HCF/HCFMCI-A	3/8" FMC	14/2 - 12/2
4157-DC		.43-.61	AC/MC/MCI-A	HCF/HCFMCI-A	3/8" FMC	14/2 - 10/3
4357-DC		.43-.61	AC/MC/MCI-A	HCF/HCFMCI-A	3/8" FMC	14/2 - 10/3
4457-DC		.43-.61	AC/MC/MCI-A	HCF/HCFMCI-A	3/8" FMC	14/2 - 10/3
5157-DC		.43-.61	AC/MC/MCI-A	HCF/HCFMCI-A	3/8" FMC	14/2 - 10/3
AMC-50*	1/2"	.40-.62	AC/MC/MCI-A	HCF/HCFMCI-A	3/8" FMC	14/2 - 10/3
AMC-50QI*	1/2"	.40-.62	AC/MC/MCI-A	HCF/HCFMCI-A	3/8" FMC	14/2 - 10/3
AMC-5075*	1/2"	.62-.92	AC/MC/MCI-A	HCF/HCFMCI-A	1/2" FMC	10/4 - 6/4
AMC-52	1/2"	.43-.62	AC/MC/MCI-A	HCF/HCFMCI-A	3/8" FMC	14/2 - 10/3
AMC-52QI	1/2"	.40-.61	AC/MC/MCI-A	HCF/HCFMCI-A	3/8" FMC	14/2 - 10/2
AMC-75*	3/4"	.56-.81	AC/MC	HCF	1/2" FMC	10/3 - 6/3
BL-17*	1/2"	.701-803	8/3 AC90	HCF	1/2" FMC	8/3 - 6/3
BL-17I*	1/2"	.701-803	8/3 AC90	HCF	1/2" FMC	8/3 - 6/3
BL-18	3/4"		6/3 AC90 ONLY		3/4" FMC	6/3
BL-18I	3/4"		6/3 AC90 ONLY		3/4" FMC	6/3
BL-19	1"		3/3 AC90		1" FMC	3/3
BL-19I	1"		3/3 AC90		1" FMC	3/3
SG3838ASP	1/2"	.42-.61	AC/MC/MCI-A	HCF/HCFMCI-A	3/8" FMC	14/2 - 10/3
SG38ASP*	1/2"	.43-.61	AC/MC/MCI-A	HCF/HCFMCI-A	3/8" FMC	14/4 - 10/3

**SEE THE DIFFERENCE
ORANGE MAKES™**

BRIDGEPORT TECH SALES MANAGER MARKET AREAS

**Nesco
West Canada**

**Nesco
East Canada**



Larry Beach,
360-722-0004
larryb@bptfittings.com



Wayne Beach,
508-728-6462
wayneb@bptfittings.com



Eric Cerasale,
203-673-9800
ericc@bptfittings.com



Alan Beach,
774-419-2015
alanb@bptfittings.com

Distributed by:



Bridgeport Fittings, Inc.
705 Lordship Blvd.
Stratford, CT 06615-7313

Voice: 203.377.5944
E-mail: sales@bptfittings.com



Printed in the U.S.A.
© 2017 Bridgeport Fittings, Inc. All rights reserved.



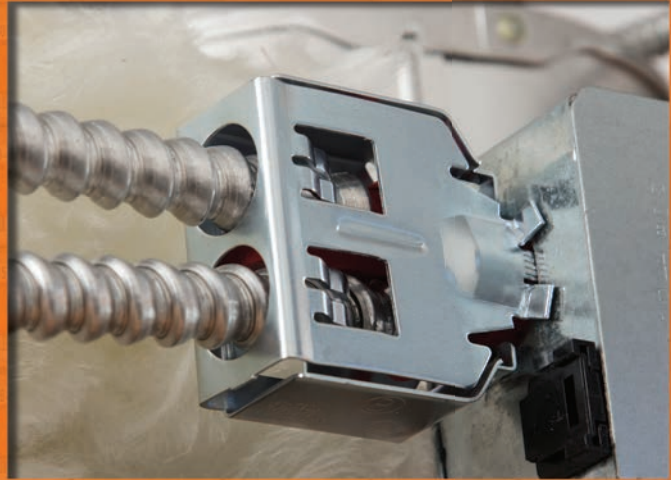
12/17 7500 BP-MC

THE WALL OF ORANGE™

BUILT FOR WHAT MATTERS



BRIDGEPORT PRODUCTS FOR MC CABLE



MAKE SWEET CONNECTIONS

 **BRIDGEPORT**
BPTFITTINGS.COM



SEE THE DIFFERENCE
ORANGE MAKES™
[HTTP://QRS.LY/8K63SF7](http://qrs.ly/8K63SF7)

COMING SOON!

MC-FLEXFIT™ ADJUSTABLE MC CONNECTOR

ADJUSTABLE NONMETALLIC
END STOP AND THROAT



**INNOVATIVE AND LONGER ONE PIECE
ARMOR STOP AND INSULATED THROAT
PROVIDES GREATER CONDUCTOR PROTECTION**



- Unique two position, two screw hinge for quickest installation
- No need for separate bushings
- Heavy duty steel construction supports large-sized MC cable
- Fewer connectors handles more cable diameters
- cETLus Listed
- Patented

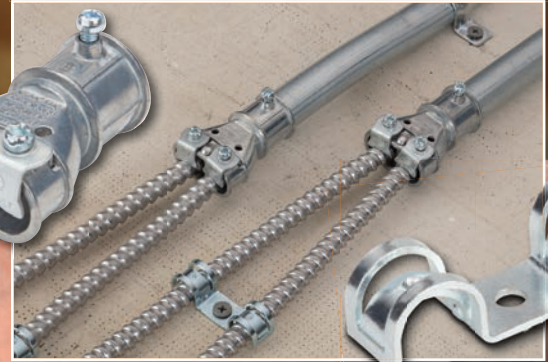
THE WALL OF ORANGE™

ORANGE CAN HANDLE IT

Go with proven products from
the Bridgeport Wall of Orange.
They can take tough.

MAKE THE S

EMT TO MC CABLE TRANSITION WITH DUPLEX STRAP



4157-DC MIGHTY-MERGE®
COMBINATION COUPLINGS

USD-4461 MIGHTY-HOLD®
DUPLEX UNIVERSAL STRAPS

PREFABRICATED MULTIPLE LIGHTING CONNECTIONS

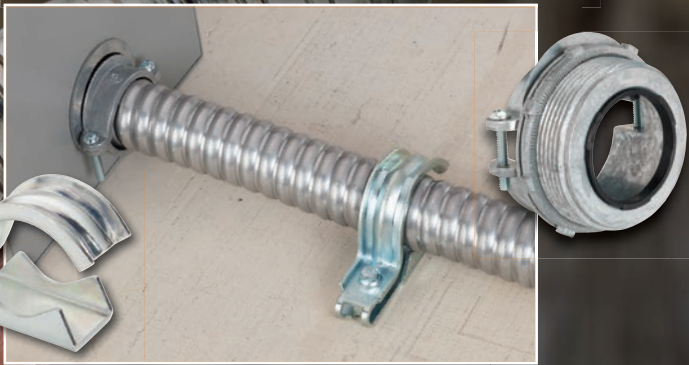


4457-DC MIGHTY-MERGE®
MULTI PORT COMBINATION
COUPLINGS

590-DC2 CABLE SNAP
CONNECTORS

SWEETEST CONNECTIONS

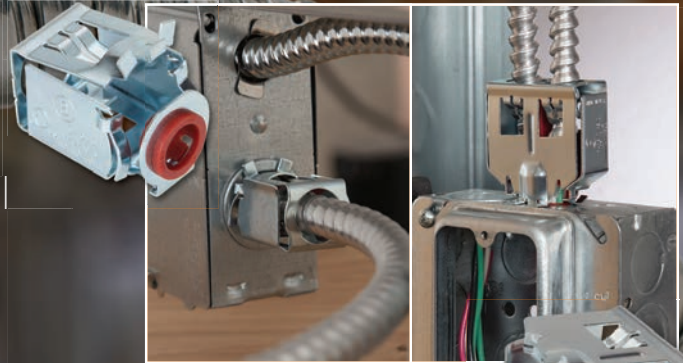
MC FEEDER CONNECTION WITH ADJUSTABLE CLAMP STRAP



680 SERIES TWO SCREW STRAP CONNECTORS

UCS SERIES MIGHTY-HOLD® UNIVERSAL CLAMP STRAPS

SINGLE AND DUPLEX STEEL QUICK INSTALL CONNECTIONS



AMC-50QI E-Z LOCK™ CONNECTORS

AMC-52QI E-Z LOCK™ DUPLEX CONNECTORS



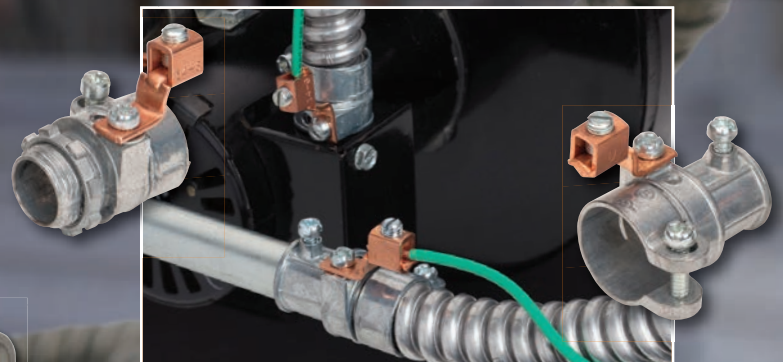
JACKETED MC CABLE CONNECTION AND SUPPORT



595 SERIES MIGHTY-SEAL® POLYOLEFIN COATED MC CONNECTORS

USS SERIES MIGHTY-HOLD® STAINLESS STEEL STRAPS

EQUIPMENT GROUNDED TRANSITION AND FLEX CONNECTION

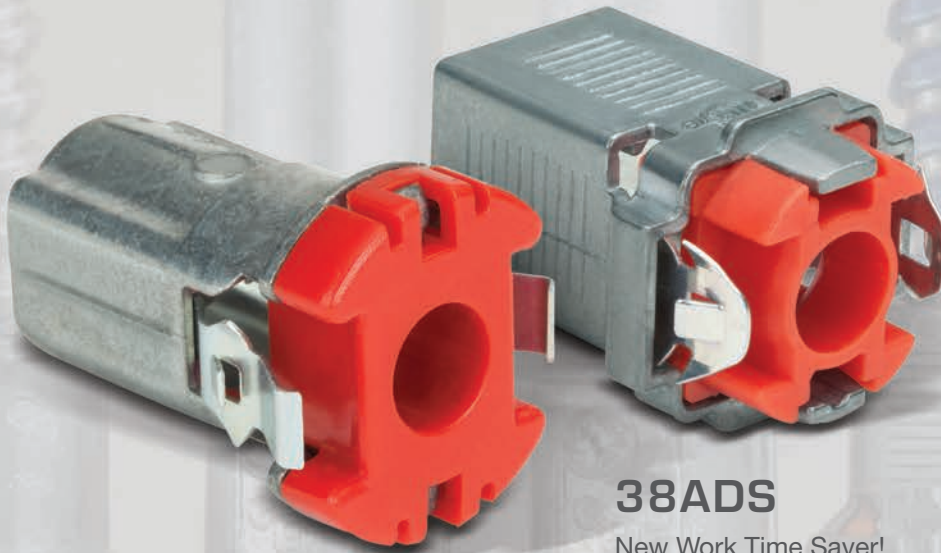


281-DCG SQUEEZE TRANSITION COUPLINGS WITH GROUNDING LUG

407-DC2G SQUEEZE CONNECTORS WITH GROUNDING LUG

QUICK INSTALL SOLUTIONS IN ZINC

QUALITY, VALUE AND INNOVATION.

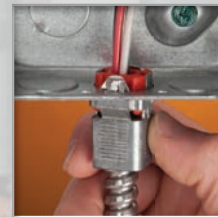


38ADS

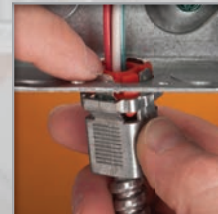
New Work Time Saver!

**Double-Snap Connectors
No Tools Required!**

- Simple and Fast
- Reusable
- Robust Insulated Throat
- cULus Listed



**SNAP IN
BOX**



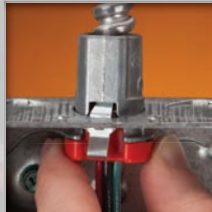
**EASY,
NO TOOL
REMOVAL**

38ACDS

Old Work Problem Solver!



SNAP IN CABLE



SNAP IN BOX



**EASY, NO TOOL
REMOVAL**

Zinc Die Cast / Insulated Throat – 105°C

Catalog Number	K.O. Size	Flex Trade Size	AC/MC Cable Range		Unit Qty.	Std. Pkg. Qty.
			Min.	Max.		
38ACDS	1/2"	3/8"	14/2 (.40")	10/3 (.63")	50	500
38ADS	1/2"	3/8"	14/2 (.40")	10/3 (.63")	50	500

3838ASP



**WHIPPER-SNAP®
DUPLEX CONNECTORS**



- Double snap in
- Easy removal from the box
- Reuseable
- cULus Listed
- Patented

Zinc Die Cast / Insulated Throat – 105°C

Catalog Number	K.O. Size	Flex Trade Size	AC/MC Cable Range		Unit Qty.	Std. Pkg. Qty.
			Min.	Max.		
3838ASP	1/2"	3/8"	14/2 (.38")	10/2 (.59")	20	200

QUICK INSTALL SOLUTIONS IN STEEL

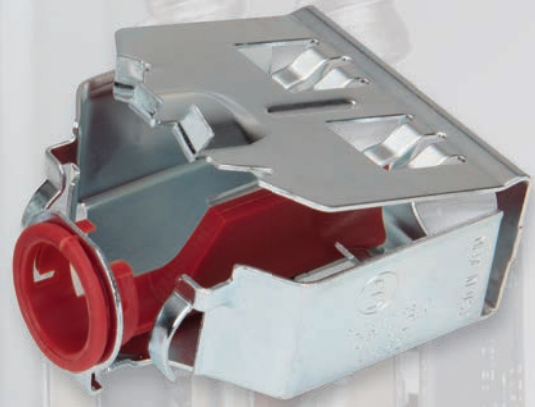


50% LESS TIME. 100% LESS TOOLS.



**AMC-50QI
E-Z LOCK™
QUICK INSTALL
CONNECTORS**

- Lever action
- Easy in; Easy out
- Rectangular design requires less effort to install
- No Tools Required



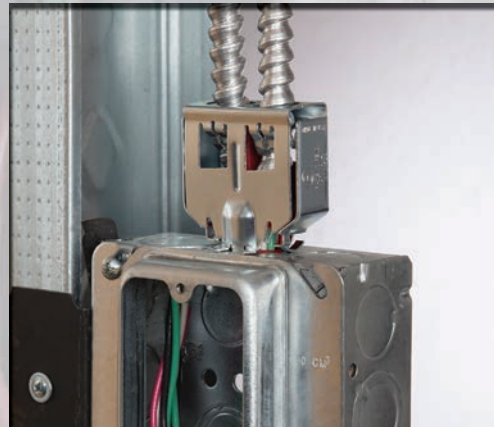
**AMC-52QI
E-Z LOCK™
QUICK INSTALL
DUPLEX CONNECTORS**

- Open pass-through eliminates damage to conductors
- Prefab alternative
- Made in the USA
- Patent Pending



Zinc Plated Steel

Catalog Number	K.O. Size	Flex Trade Size	AC/MC Cable Range Min. Max.	Unit Qty.	Std. Pkg. Qty.
AMC-50QI	1/2"	3/8"	14/2 (.40") 10/3 (.61")	50	500



Zinc Plated Steel

Catalog Number	K.O. Size	Flex Trade Size	AC/MC Cable Range Min. Max.	Unit Qty.	Std. Pkg. Qty.
AMC-52QI	1/2"	3/8"	14/2 (.40") 10/2 (.59")	25	250

FOR MORE INFORMATION, VISIT: WWW.BPTFITTINGS.COM

AC/MC Selection Chart

Catalog Number	UPC Number	Trade Size	K.O. Size	Cable
----------------	------------	------------	-----------	-------

DIE CAST SQUEEZE CONNECTORS

403-DC2	15403	3/8"	1/2"	12/3 thru 10/3 (.58"-.61") AC/MC
---------	-------	------	------	----------------------------------

DIE CAST SQUEEZE CONNECTORS WITH GROUNDING LUG

407-DC2G	17407	1/2"	1/2"	.86"-.92" AC/HCF, FMC
----------	-------	------	------	-----------------------

DIE CAST STRAP TYPE CONNECTORS

560-DC2*	15560	3/8"	1/2"	14/4 to 10/4 (.44"-.61") AC/MC/MCI-A
561-DC2*	15561	3/4"	3/4"	12/4 thru 8/4 (.61"-.87") AC/MC
560-DCI2	16560	3/8"	1/2"	14/4 to 10/4 (.43"-.61") AC/MC/MCI-A
561-DCI2*	16561	3/4"	3/4"	AC/MC: 12/4 thru 8/4 (.61"-.87") AC/MC
560-MCIA2	72560	3/8"	1/2"	14/2 to 10/4 (.38"-.61") MCI-A
BL-17*	15567	1/2"	1/2"	8/3 AC90, 8/3 or 6/3 MCI-A
BL-17I*	16567	1/2"	1/2"	8/3 AC90, 8/3 or 6/3 MCI-A
BL-18	15568	3/4"	3/4"	6/3 AC90
BL-18I	16568	3/4"	3/4"	6/3 AC90
BL-19	15569	1"	1"	3/3 AC90
BL-19I	16569	1"	1"	3/3 AC90

DIE CAST 1 OR 2 SCREW CONNECTORS

501-DC2*	15501	3/8"	1/2"	14/2-10/3 Steel MC/MCI-A .43"-.61" Steel or AL AC
545-DC2*	15545	3/8"	1/2"	14/2 thru 10/3 (.44"-.61") AC/MC
563-DC2	15563	3/8"	1/4"	14/2-12/2 AC/MC/NM
565-DC2	15565	3/8"	1/2"	14/2 to 10/3 (.38"-.53") MC/MCI-A
566-DC2	15566	3/8"	1/2"	14/4 to 10/3 (.44"-.53") ALMC/MCI-A
845SP	70501	3/8"	1/2"	12/2 to 10/4 (.43"-.61") AC/MC/MCI-A
840SP*	70566	3/8"	1/2"	14/2 to 10/3 (.44"-.61") AC/MC/MCI-A

MALLEABLE IRON SINGLE SCREW CONNECTORS

403-I*	10403	3/8"	1/2"	14/4 to 6/3 AC/MC/MCI-A
--------	-------	------	------	-------------------------

DIE CAST LOW PROFILE "U" SHAPED STRAP CONNECTORS

SG38ASP*	08570	3/8"	1/2"	14/4 to 10/3 (.43"-.61") AC/MC/MCI-A
570-DC2*	15570	3/8"	1/2"	14/2 to 10/3 (.38"-.61") AC/MC/MCI-A
570-DCI2*	16570	3/8"	1/2"	14/4 to 10/3 (.38"-.61") AC/MC/MCI-A

DIE CAST COLOR-CODED LOW PROFILE CONNECTORS

570-GI*	75706	3/8"	1/2"	14/2 to 10/3 (.38"-.61") HCF/AC (Green color)
570-RI*	75708	3/8"	1/2"	18/2 to 12/4 (.38"-.61") Fire Alarm MC (Red color)



403-DC2



407-DC2G



560-DC2



561-DCI2



BL-17



501-DC2



545-DC2



563-DC2



565-DC2



566-DC2



840SP



845SP



403-I



SG38ASP



570-DC2



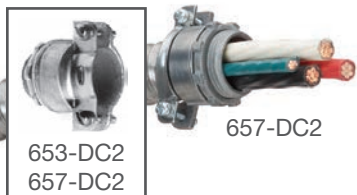
570-DCI2



570-RI



570-GI
570-G/RI



Catalog Number	UPC Number	Trade Size	K.O. Size	Cable
----------------	------------	------------	-----------	-------

DIE CAST 2 SCREW CONNECTORS

653-DC2*	15653	1/2"	1/2"	8/2-6/4 (.675"-.90") AC
655-DC2	15655	3/4"	3/4"	6/3-4/3 (.85"-1.1") AC/MC
657-DC2	15657	1"	1"	4/3 to 1/3 (1.03"-1.31") AC/MC

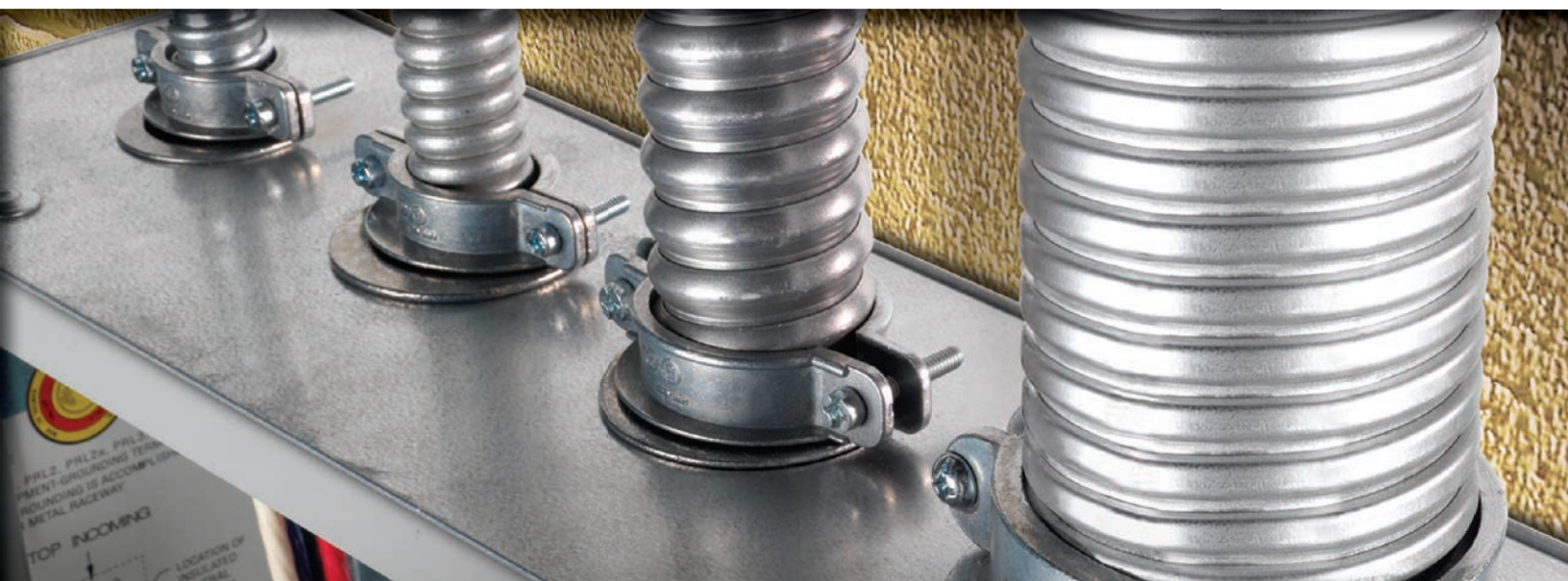
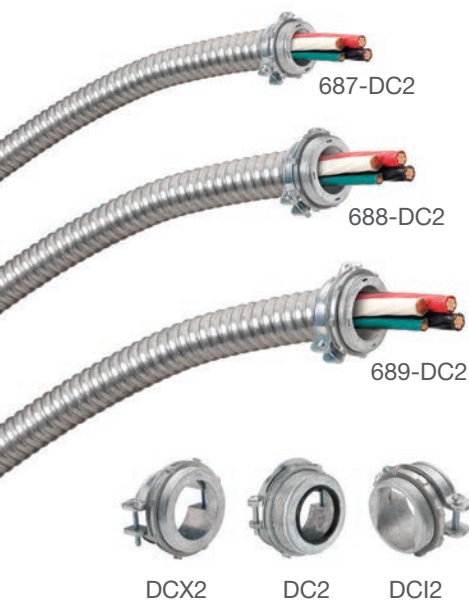


ADJUSTABLE END STOP MC-FLEXFIT™ CONNECTORS

683-UI	02683	1"	1"	.78"-1.12" MC
684-UI	02684	1 1/4"	1 1/4"	1.00"-1.46" MC
685-UI	02685	1 1/2"	1 1/2"	1.36"-1.77" MC
686-UI	02886	2"	2"	1.70"-2.20" MC
687-UI	02687	2 1/2"	2 1/2"	2.10"-2.70" MC
688-UI	02688	3"	3"	2.63"-2.90" MC
688-UIX	02689	3"	3"	2.90"-3.30" MC

DIE CAST LARGE SIZE 2 SCREW, STRAP TYPE CONNECTORS

682-DC2*	15682	3/4"	1"	3 #12 to 3 #6 (.525"-.875") AC/MC
683-DC2	15683	1"	1"	3 #4 to 4 #3 (.875"-1.04") MC
683-DCI2	16683	1"	1"	3 #6 to 3 #3 (.75"-1.04") MC
683-DCX2	15683	1"	1"	3 #4 to 4 #3 (.88"-1.04") AC/MC
684-DC2	15684	1 1/4"	1 1/4"	3 #1 to 4 #2 (1.1"-1.25") MC
684-DCX2	15684	1 1/4"	1 1/4"	3 #1 to 4 #2 (1.1"-1.25") AC/MC
685-DC2	15685	1 1/2"	1 1/2"	3 #2/0 to 4 #1/0 (1.25"-1.5") MC
685-DCX2	15685	1 1/2"	1 1/2"	3 #2/0 to 4 #1/0 (1.25"-1.5") AC/MC
686-DC2	15686	2"	2"	3 #350 to 4 #250 (1.75"-2.0") MC
686-DCX2	25686	2"	2"	3 #4/0 to 4 #250 (1.5"-1.85") MC
687-DC2	15687	2 1/2"	2 1/2"	3 #500 to 4 #400 (2.0"-2.5") MC
687-DCX2	15687	2 1/2"	2 1/2"	3 #500 to 4 #400 (2.0"-2.5") AC/MC
688-DC2	15688	3"	3"	3 #600 to 4 #700 (2.375"-3.0") MC
688-DCX2	15688	3"	3"	3 #600 to 4 #700 (2.38"-3.0") AC/MC
689-DC2	15689	3 1/2"	3 1/2"	4 #700 to 4 #750 (2.75"-3.50") MC
689-DCX2	15689	3 1/2"	3 1/2"	4 #700 to 4 #750 (2.75"-3.5") AC/MC





683-XM

Catalog Number	UPC Number	Trade Size	K.O. Size	Cable
----------------	------------	------------	-----------	-------

**MALLEABLE IRON (REGULAR OPENING)
4 SCREW, STRAP TYPE CONNECTORS**

683-XM	00683	1"	1"	3 # 4 to 4 #3 (.81"-1.05") AC/MC
684-XM	00684	1 1/4"	1 1/4"	3 #1 to 4 #2 (1.05"-1.27") AC/MC
685-XM	00685	1 1/2"	1 1/2"	3 #2/0 to 4 #1/0 (1.27"-1.4") AC/MC
686-XM	00686	2"	2"	3-4/0 to 3 #250 (1.4"-1.94") AC/MC
687-XM	00687	2 1/2"	2 1/2"	3 #500 to 4 #400 (1.94"-2.40") AC/MC
688-XM	00688	3"	3"	3 #600 to 4 #700 (2.4"-2.9") AC/MC
689-XM	00689	3 1/2"	3 1/2"	4 #700 to 4 #750 (2.6"-3.2") AC/MC



801-DC2
808-DC2

802-DC2
802-MCIA2
851-DC2



802SP
851SP

DIE CAST 90° CONNECTORS

801-DC2*	15801	3/8"	1/2"	12/2 to 10/3 (.45"- .625") MC
801-DCI2*	16801	3/8"	1/2"	12/2 to 10/3 (.45"- .625") MC
802-MCIA2	75802	3/8"	1/2"	(.42"- .55") MC/MCI-A
802-DC2*	15802	3/8"	1/2"	12/2 to 10/3 (.48"- .58") AC/MC
802-DCI2	16802	3/8"	1/2"	12/2 to 10/3 (.48"- .58") AC/MC
802SP*	70802	3/8"	1/2"	12/2 to 10/3 (.48"- .58") AC/MC



830-DC2



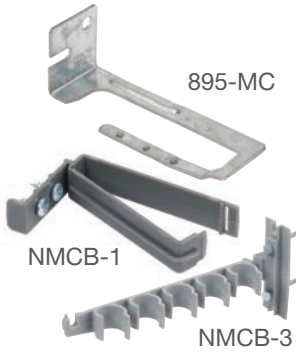
850SP



84690SP

DIE CAST 90° CONNECTORS

804-DC2	15804	1/2"	1/2"	8/4 to 6/3 (.75"- .875") MC
804-DCI2	16804	1/2"	1/2"	8/4 to 6/3 (.75"- .875") MC
806-DC2	15806	3/4"	3/4"	4/2 to 4/3 (.875"-1.0") MC
806-DCI2	16806	3/4"	3/4"	4/2 to 4/3 (.875"-1.0") MC
807-DC2	15807	1"	1"	1.187" to 1.312" MC
807-DCI2	16807	1"	1"	1.187" to 1.312" MC
808-DC2	15808	1 1/4"	1 1/4"	1.500" to 1.625" MC
808-DCI2	16808	1 1/4"	1 1/4"	1.500" to 1.625" MC
830-DC2	15830	3/8"	1/2"	14/2 to 10/3 (.44"- .61") AC
850SP	70801	3/8"	1/2"	12/2 to 10/3 (.55"- .61") MC
851ASP	08851	1/2"	1/2"	1/2" FMC
851-DC2	15851	1/2"	1/2"	1/2" FMC
851-DCI2	16851	1/2"	1/2"	1/2" FMC
851SP	70851	1/2"	1/2"	1/2" FMC
84690SP	70830	3/8"	1/2"	14/2 to 10/3 (.42"- .61") AC/MC/MCI-A



Catalog Number	UPC Number	Trade Size	K.O. Size	Cable
----------------	------------	------------	-----------	-------

CABLE BRACKETS

895-MC	02895			14/2 to 12/3 (.475"-.59") AC/MC
NMCB-1	40747			14/2, 12/2 NM
NMCB-3	40767			14/2, 10/3 NM

STEEL 1-HOLE STRAPS

890-MC	02890			14/2 to 12/2 (.475"-.525") AC/MC/MCI-A
891-MC	02891			14/3 to 12/3 (.54"-.59") AC/MC/MCI-A
900F	02970			12/4 to 10/3 (.56"-.61") AC/MC/MCI-A

ANTI-SHORT BUSHINGS "RED HEADS"

1000	01000	0		14/2 to 12/2 AC/MC/MCI-A
1001	01001	1		14/4 to 4/1 AC/MC/MCI-A
1002	01002	2		12/4 to 2/1 AC/MC/MCI-A
1003	01003	3		10/4 to 1/1 AC/MC/MCI-A
1004	01004	4		8/4 to 6/4 AC/MC/MCI-A
1005	01005	5		---
1006	01006	6		---
1007	01007	7		---
1008	01008	8		---

UNIVERSAL STEEL 1-HOLE STRAPS

US-6171	02894	3/8"		10/4 to 8/3 AC/MC/MCI-A (.617"-.710")
USD-4461	02896	3/8"		14/2 to 10/3 AC/MC/MCI-A (.425"-.610")
USD-6171	02897	3/8"		10/4 to 8/3 AC/MC/MCI-A (.617"-.710")





Catalog Number	UPC Number	Trade Size	K.O. Size	Cable
----------------	------------	------------	-----------	-------

UCS, UCSC AND UCSS CLAMP STRAPS

UCS-5075	02932	1/2"-3/4"	.710"-1.100"	AC/MC/MCI-A/HCF/JMC
UCS-75100	02933	3/4"-1"	.925"-1.320"	AC/MC/MCI-A/HCF/JMC
UCS-100125	02934	1"-1 1/4"	1.158"-1.660"	AC/MC/MCI-A/HCF/JMC
UCS-125150	02935	1 1/4"-1 1/2"	1.505"-1.950"	AC/MC/MCI-A/HCF/JMC
UCS-150200	02936	1 1/2"-2"	1.735"-2.450"	AC/MC/MCI-A/HCF/JMC

Polyolefin Coated Steel

UCSC-5075	14932	1/2"-3/4"	.710"-1.100"	AC/MC/MCI-A/HCF/JMC
UCSC-75100	14933	3/4"-1"	.925"-1.320"	AC/MC/MCI-A/HCF/JMC
UCSC100125	14934	1"-1 1/4"	1.158"-1.660"	AC/MC/MCI-A/HCF/JMC
UCSC125150	14935	1 1/4"-1 1/2"	1.505"-1.950"	AC/MC/MCI-A/HCF/JMC
UCSC150200	14936	1 1/2"-2"	1.735"-2.450"	AC/MC/MCI-A/HCF/JMC

Stainless Steel

UCSS-5075	02942	1/2"-3/4"	.710"-1.100"	AC/MC/MCI-A/HCF/JMC
UCSS-75100	02943	3/4"-1"	.925"-1.320"	AC/MC/MCI-A/HCF/JMC
UCSS100125	02944	1"-1 1/4"	1.158"-1.660"	AC/MC/MCI-A/HCF/JMC
UCSS125150	02945	1 1/4"-1 1/2"	1.505"-1.950"	AC/MC/MCI-A/HCF/JMC
UCSS150200	02946	1 1/2"-2"	1.735"-2.450"	AC/MC/MCI-A/HCF/JMC





4157-DC



4156-DC

4357-DC



4457-DC

5157-DC



280-DC,
280-DCX

280SPMB,
281SPMB



281-DCG

Catalog Number	UPC Number	Cable/Conduit
----------------	------------	---------------

COMBINATION EMT - AC/MC COUPLINGS

4157-DC	94157	14/2 thru 10/3 to 3/4" EMT (.43"-.61") AC/MC
---------	-------	--

COMBINATION COUPLINGS

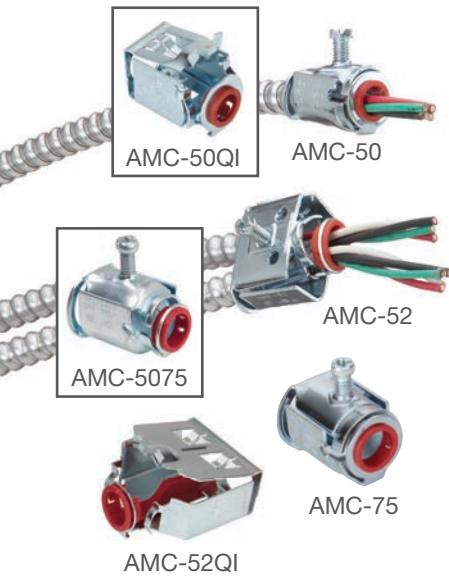
4057-DC	94057	14/2 thru 10/3 to 3/4" EMT (.43"-.61") AC/MC/MCI-A
4058-DC	94058	10/4 thru 6/4 to 3/4" EMT (.63"-.89") AC/MC/MCI-A
4156-DC	94156	14/2 thru 12/2 to 1/2" EMT (.43"-.61") AC/MC/MCI-A
4357-DC	94357	14/2 thru 12/2 to 1" EMT (.43"-.61") AC/MC/MCI-A
4457-DC	94457	14/2 thru 12/2 to 1" EMT (.43"-.61") AC/MC/MCI-A
5157-DC	95157	14/2 thru 12/2 to 1" EMT (.43"-.61") AC/MC/MCI-A

TRANSITION COUPLINGS

280-DCX	09279	14/2 thru 10/3 to 1/2" EMT (.43"-.61") AC/MC/MCI-A
280SP	70280	14/2 thru 10/3 to 1/2" EMT (.43"-.61") AC/MC/MCI-A
280SPMB	71280	14/2 thru 10/3 to 1/2" EMT (.43"-.61") AC/MC/MCI-A
281SPMB	71281	10/4 thru 8/3 to 3/4" EMT (.61"-.72") AC/MC/MCI-A

SQUEEZE TRANSITION COUPLING WITH GROUNDING LUG

281-DCG	17281	1/2" FMC to 1/2" EMT
---------	-------	----------------------

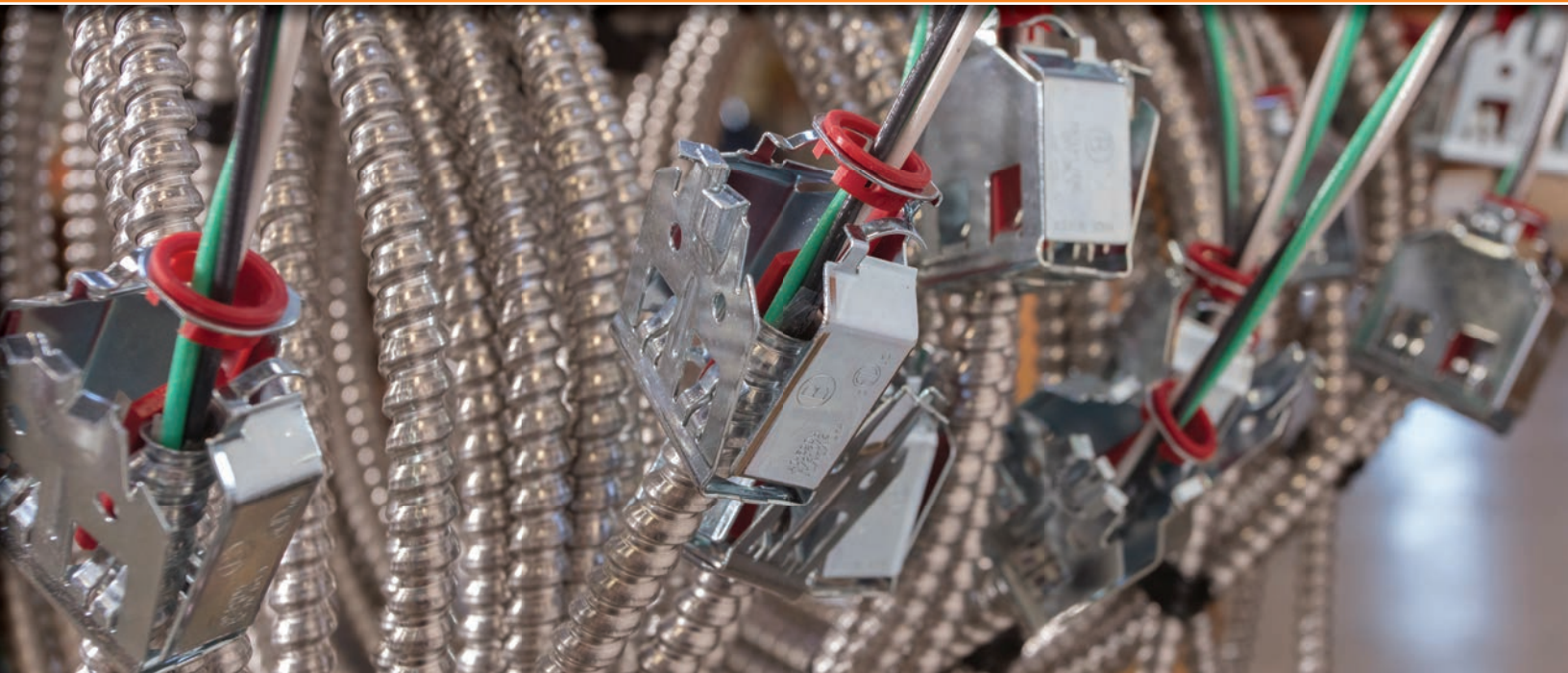


Catalog Number	UPC Number	Trade Size	K.O. Size	Cable
----------------	------------	------------	-----------	-------

STEEL E-Z LOCK™ SINGLE & DUPLEX CONNECTORS

AMC-50*	20570	3/8"	1/2"	14/4 to 10/4 (.40"-.62") AC/MC/MCI-A
AMC-50QI*	21570	3/8"	1/2"	14/2 to 10/3 (.40"-.62") AC/MC/MCI-A
AMC-5075*	20577	1/2"	1/2"	8/3 to 6/2 (.62"-.92") AC/MC/MCI-A
AMC-52	20580	3/8"	1/2"	14/4 to 10/4 (.43"-.62") AC/MC/MCI-A
AMC-75*	20571	3/4"	3/4"	10/3 to 8/4 (.566"-.81") AC/MC/HCF
AMC-52QI	21580	3/8"	1/2"	14/2 to 10/2 (.40"-.61") AC/MC/MCI-A





571-DC2
573-DC2



571-S
573-S

Catalog Number	UPC Number	Trade Size	K.O. Size	Cable
----------------	------------	------------	-----------	-------

“U” SHAPED STRAP CONNECTORS

571-DC2*	15571	1/2"	1/2"	8/3 to 6/3 (.70"-.855") AC/MC/MCI-A
571-DCI2*	16571	1/2"	1/2"	8/3 to 6/2 (.63"-.78") AC/MC/MCI-A
572-DC2	15572	3/4"	3/4"	4/3 to 3/4 (.948"-1.035") AC/MC
572-DCI2	16572	3/4"	3/4"	4/3 to 3/4 (.948"-1.035") AC/MC
573-DC2	15573	1"	1"	2/3 to 2/0-3 (1.18"-1.35") AC/MC
573-DCI2	16573	1"	1"	2/3 to 2/0-3 (1.18"-1.35") AC/MC
571-S	00571	1/2"	1/2"	8/3 to 6/3 (.701"-.855") AC/MC/MCI-A
571-SI*	10571	1/2"	1/2"	8/3 to 6/2 (.63"-.78") AC/MC/MCI-A
572-S	00572	3/4"	3/4"	4/3 to 3/4 (.945"-1.12") AC/MC
572-SI	10572	3/4"	3/4"	4/3 to 3/4 (.945"-1.12") AC/MC
573-S	00573	1"	1"	2/3 to 2/0-3 (1.18"-1.35") AC/MC
573-SI	10573	1"	1"	2/3 to 2/0-3 (1.18"-1.35") AC/MC

DIE CAST SNAP-IN CONNECTORS

38ADS	08390	3/8"	1/2"	14/2 to 10/3 (.40"-.63") AC/MC/MCI-A/HCF
Double Snap				
38ACDS	08380	3/8"	1/2"	14/2 to 10/3 (.40"-.63") AC/MC/MCI-A/HCF
Double Snap for Old Work				
590-DC2	15590	3/8"	1/2"	14/2 to 10/3 (.43"-.61") AC/MC
590-DCI2*	16590	3/8"	1/2"	14/2 to 10/3 (.43"-.61") AC/MC



38ACDS



38ADS



590-DCI2



Catalog Number	UPC Number	Trade Size	K.O. Size	Cable
----------------	------------	------------	-----------	-------

PVC JACKETED MC AND TECK CABLE CONNECTORS

595-DC2	15595	3/8"	1/2"	12/3 thru 10/3 PVC Jacketed MC or 14/2,14/3 or 12/2 TECK Cable with Armor and Jacket (.50"- .61")
595-DC12	16595	3/8"	1/2"	12/3 thru 10/3 PVC Jacketed MC or 14/2, 14/3 or 12/2 TECK Cable with Armor and Jacket (.50"- .61")
596-DC2	15596	1/2"	1/2"	10/3 thru 8/3 PVC Jacketed MC or 14/2 thru 10/3 TECK Cable with Armor and Jacket (.685"- .80")
596-DC12	16596	1/2"	1/2"	10/3 thru 8/3 PVC Jacketed MC or 14/2 thru 10/3 TECK Cable with Armor and Jacket (.685"- .80")
895-DC2**	15895	3/8"	1/2"	12/3 thru 10/3 PVC Jacketed MC or 14/2,14/3 or 12/2 TECK Cable with Armor and Jacket (.50"- .61")
895-DC12**	16895	3/8"	1/2"	12/3 thru 10/3 PVC Jacketed MC or 14/2,14/3 or 12/2 TECK Cable with Armor and Jacket (.50"- .61")

Polyolefin Coated

595-DC2C	14895	3/8"	1/2"	12/3 thru 10/3 PVC Jacketed MC or 14/2,14/3 or 12/2 TECK Cable with Armor and Jacket (.50"- .61")
596-DC2C	14596	3/8"	1/2"	10/3 thru 8/3 PVC Jacketed MC or 14/2 thru 10/3 TECK Cable with Armor and Jacket (.685"- .80")
895-DC2C**	14895	3/8"	1/2"	12/3 thru 10/3 PVC Jacketed MC or 14/2,14/3 or 12/2 TECK Cable with Armor and Jacket (.50"- .61")

** 90 Degree





Catalog Number	UPC Number	Trade Size	K.O. Size	Cable
----------------	------------	------------	-----------	-------

STAINLESS STEEL STRAPS FOR PVC AND TECK JACKETED MC



USS-6171

USS-6171	02893	3/8"	1/2"	(.61"-.71") AC/MC/PVC-MC
----------	-------	------	------	--------------------------

DIE CAST DUPLEX CONNECTORS



601-DC2



830-DC2



3838ASP



3838SP



SG3838ASP

601-DC2	15601	3/8"	1/2"	14/2 to 10/4 (.375"-.625") AC/MC/MCI-A
621-DC2*	15621	3/8"	3/4"	14/4 to 8/3 (.44"-.70") AC/MC/MCI-A
691-DC2	15691	3/8"	1/2"	14/2 to 10/3 (.42"-.61") AC/MC/MCI-A
830-DC2	15830	3/8"	1/2"	14/2 to 10/3 (.44"-.61") AC/MC
3838ASP	08690	3/8"	1/2"	14/2 to 10/2 (.38"-.59") AC/MC/MCI-A
3838SP	70690	3/8"	1/2"	14/2 to 10/2 (.38"-.59") AC/MC/MCI-A
SG3838ASP	08691	3/8"	1/2"	14/2 to 10/3 (.42"-.61") AC/MC/MCI-A

Suggested Fittings for Non-PVC Jacketed MC Cable *

3 CONDUCTORS WITH GROUND

Size (AWG or kcmil)	Bridgeport Connector
6-6-6-6	653-DC2
4-4-4-6	683-DC2
2-2-2-4	683-DC2
1-1-1-4	684-DC2
1/0-1/0-1/0-4	684-DC2
2/0-2/0-2/0-4	685-DC2
3/0-3/0-3/0-4	685-DC2
4/0-4/0-4/0-2	686-DCX2
250-250-250-2	686-DCX2
300-300-300-1	686-DC2
350-350-350-1	686-DC2
400-400-400-1	687-DC2
500-500-500-1	687-DC2
500-500-500-2/0	687-DC2
500-500-500-250	688-DC2
600-600-600-1/0	687-DC2
750-750-750-1/0	688-DC2
750-750-750-3/0	688-DC2

4 CONDUCTORS WITH GROUND

Size (AWG or kcmil)	Bridgeport Connector
6-6-6-6-6	653-DC2
4-4-4-4-6	683-DC2
2-2-2-2-4	657-DC2
1-1-1-1-4	684-DC2
1/0-1/0-1/0-1/0-4	685-DC2
2/0-2/0-2/0-2/0-4	685-DC2
3/0-3/0-3/0-3/0-4	686-DCX2
4/0-4/0-4/0-4/0-2	686-DCX2
250-250-250-250-1	686-DC2
300-300-300-300-1	687-DC2
350-350-350-350-1/0	687-DC2
400-400-400-400-3/0	687-DC2
500-500-500-500-3/0	687-DC2
500-500-500-500-250	687-DC2
600-600-600-600-3/0	688-DC2
600-600-600-600-400	688-DC2
750-750-750-750-3/0	688-DC2
750-750-750-750-500	689-DC2
900-900-900-900-250	689-DC2

*Check outside cable diameter with cable manufacturer to select the correct fitting.

Bridgeport MCI-A Cable Fittings

Cable Fitting	Enclosure Opening KO Size	Cable Outer Diameter (O.D.) Range	Cable Types Listed To: Note: Includes Steel and Aluminum	Healthcare Facility Cable	Flexible Metal Conduit Note: Includes Steel and Aluminum (RWFMC)	Recommended Cable Types & Notes Note: Verify with cable O.D. Includes Steel and Aluminum
38ADS	1/2"	.40-.63	AC/MC/MCI-A	HCF	3/8" FMC/RWFMC	14/2 - 10/3
38ACDS	1/2"	.40-.63	AC/MC/MCI-A	HCF	3/8" FMC/RWFMC	14/2 - 10/3
280DCX		.43-.61	AC/MC/MCI-A			14/2 - 10/3 to 1/2" EMT
280SP		.43-.61	AC/MC/MCI-A		3/8" FMC	14/2 - 10/3 to 1/2" EMT
280SPMB		.43-.61	AC/MC/MCI-A		3/8" FMC	14/2 - 10/3 to 1/2" EMT
281SPMB		.61-.72	AC/MC/MCI-A		3/8" FMC	10/4 - 8/3 to 3/4" EMT
281-DCG					1/2"	1/2" FMC to 1/2" EMT
3838ASP	1/2"	.38-.59	AC/MC/MCI-A	HCF/HCFMCI-A	3/8" FMC	14/2 - 10/2
3838SP	1/2"	.38-.59	AC/MC/MCI-A	HCF/HCFMCI-A	3/8" FMC	14/2 - 10/2
403-DC2	1/2"	.56-.61	AC/MC	HCF	3/8" FMC	12/3 - 10/3
403-I*	1/2"	.51-.835	AC/MC/MCI-A		3/8" FMC	14/4 - 6/3
407-DC2	1/2"	.86-.92	AC	HCF		
407-DCI2	1/2"	.86-.92	AC	HCF		
407-DC2G	1/2"	.86-.92	AC	HCF	1/2" FMC	
501-DC2*	1/2"	.43-.61	MC ONLY			14/2 - 10/3
545-DC2*	1/2"	.44-.61	AC/MC/MCI-A	HCF/HCFMCI-A		14/2 - 10/3
560-DC2*	1/2"	.44-.61	AC/MC/MCI-A	HCF/HCFMCI-A	3/8" FMC	12/2 - 10/4
560-DCI2	1/2"	.44-.61	AC/MC/MCI-A	HCF/HCFMCI-A	3/8" FMC	12/2 - 10/4
560-MCIA2	1/2"	.38-.61	MC/MCI-A	HCFMCI-A		14/2 - 10/3
561-DC2*	3/4"	.61-.87	AC/MC	HCF		10/4 - 8/3
561-DCI2*	3/4"	.61-.87	AC/MC	HCF		10/4 - 8/3
563-DC2	1/4"		AC/MC	HCF		14/2 - 12/2
565-DC2	1/2"	.38-.53	MC/MCI-A	HCFMCI-A		14/2 - 10/3
566-DC2	1/2"	.44-.53	AC/MC/MCI-A	HCF/HCFMCI-A		12/2 - 10/3
570-DC2*	1/2"	.38-.61	AC/MC/MCI-A	HCF/HCFMCI-A		14/2 - 10/3
570-DCI2*	1/2"	.38-.61	AC/MC/MCI-A	HCF/HCFMCI-A		14/2 - 10/3
570-DCR2	1/2"	.38-.61	AC/MC/MCI-A	HCF/HCFMCI-A		14/2 - 10/3
570-GI*	1/2"	.38-.61	AC/MC/MCI-A	HCF/HCFMCI-A		14/2 - 10/3
570-RI*	1/2"	.38-.61	AC/MC/MCI-A	HCF/HCFMCI-A		18/2 - 12/4
571-DC2*	1/2"	.70-.855	AC/MC/MCI-A	HCF/HCFMCI-A	1/2" FMC	8/3 - 6/3
571-DCI2*	1/2"	.70-.855	AC/MC/MCI-A	HCF/HCFMCI-A	1/2" FMC	8/3 - 6/3
571-S	1/2"	.701-.855	MC/MCI-A	HCFMCI-A	1/2" FMC	8/3 - 6/3
571-SI*	1/2"	.701-.855	MC/MCI-A	HCFMCI-A	1/2" FMC	8/3 - 6/3
572-DC2	3/4"	.945-1.035	MC		3/4" FMC	4/3 - 3/4
572-DCI2	3/4"	.948-1.035	MC		3/4" FMC	4/3 - 3/4
572-S	3/4"	0.945-1.04	MC		3/4" FMC	4/3
572-SI	3/4"	0.945-1.12	MC		3/4" FMC	4/3
573-DC2	1"	1.18-1.35	MC		1" FMC	2/3 - 3-2/0
573-DCI2	1"	1.18-1.35	MC		1" FMC	2/3 - 3-2/0
573-S	1"	1.18-1.35	MC		1" FMC	2/3 - 3-2/0
573-SI	1"	1.18-1.35	MC		1" FMC	2/3 - 3-2/0
590-DC2	1/2"	.43-.61	AC/MC/MCI-A	HCF/HCFMCI-A	3/8" FMC	14/2 - 10/3
590-DCI2*	1/2"	.43-.61	AC/MC/MCI-A	HCF/HCFMCI-A	3/8" FMC	14/2 - 10/3
595-DC2	1/2"	.50-.61	JMC/TECK90			12/2 - 10/3
595-DC2C	1/2"	.50-.61	JMC/TECK90			12/2 - 10/3
595-DCI2	1/2"	.50-.61	JMC/TECK90			12/2 - 10/3
596-DC2	1/2"	.61-.69	JMC/TECK90			10/4 - 8/3

Bridgeport MCI-A Cable Fittings

Cable Fitting	Enclosure Opening KO Size	Cable Outer Diameter (O.D.) Range	Cable Types Listed To: Note: Includes Steel and Aluminum	Healthcare Facility Cable	Flexible Metal Conduit Note: Includes Steel and Aluminum (RWFMC)	Recommended Cable Types & Notes Note: Verify with cable O.D. Includes Steel and Aluminum
596-DC2C	1/2"	.61-.69	JMC/TECK90			10/4 - 8/3
596-DCI2	1/2"	.61-.69	JMC/TECK90			10/4 - 8/3
601-DC2	1/2"	.375-.625	AC/MC/MCI-A	HCF/HCFMCI-A	3/8" FMC	14/2 - 10/3
621-DC2*	3/4"	.44-.70	AC/MC/MCI-A		3/8" FMC	14/4 - 8/3
653-DC2*	1/2"	.675-.90	AC	HCF	1/2" FMC	8/2 - 6/4
655-DC2	3/4"	.85-1.10	AC/MC	HCF	3/4" FMC	6/3 - 4/3
657-DC2	1"	1.03-1.31	AC/MC	HCF	1" FMC	4/3 - 1/3
683-UI	1"	.78-1.12	MC			
684-UI	1 1/4"	1.00-1.46	MC			
685-UI	1 1/2"	1.36-1.77	MC			
686-UI	2"	1.70-2.20	MC			
687-UI	2 1/2"	2.10-2.70	MC			
688-UI	3"	2.63-2.90	MC			
688-UIX	3"	2.90-3.30	MC			
682-DC2*	3/4"	.575-.875	AC/MC	HCF		10/3 - 6/4
683-DC2	1"	.875-1.04	MC			6/4 - 4/3
684-DC2	1-1/4"	1.1-1.25	MC			4/4 - 3/4
685-DC2	1-1/2"	1.25-1.5	MC			2/4 - 3-2/0
686-DC2	2"	1.75-2.00	MC			4-4/0 - 4-250 MCM
687-DC2	2-1/2"	2-2.5	MC			4-300 MCM - 4-500 MCM
688-DC2	3"	2.375-3	MC			4-500 MCM - 4-750 MCM
689-DC2	3-1/2"	2.75-3.50	MC			4-600 MCM - 4-750 MCM
683-DCI2	1"	.750-1.04	MC			6/4 - 4/3
684-DCI2	1-1/4"	1.1-1.25	MC			4/4 - 3/4
685-DCI2	1-1/2"	1.25-1.5	MC			2/4 - 3-2/0
686-DCI2	2"	1.75-2.00	MC			4-4/0 - 4-250 MCM
687-DCI2	2-1/2"	2-2.5	MC			4-300 MCM - 4-500 MCM
688-DCI2	3"	2.375-3	MC			4-500 MCM - 4-750 MCM
689-DCI2	3-1/2"	2.75-3.50	MC			4-600 MCM - 4-750 MCM
683-DCX2	1"	.875-1.04	MC			6/4 - 4/3
684-DCX2	1-1/4"	1.1-1.25	MC			4/4 - 3/4
685-DCX2	1-1/2"	1.25-1.5	MC			2/4 - 3-2/0
686-DCX2	2"	1.5-1.85	MC			3-4/0 - 4-250 MCM
687-DCX2	2-1/2"	2-2.5	MC			4-300 MCM - 4-500 MCM
688-DCX2	3"	2.375-3	MC			4-500 MCM - 4-750 MCM
689-DCX2	3-1/2"	2.75-3.50	MC			4-600 MCM - 4-750 MCM
683-XM	1"	0.81-1.05	AC/MC	HCF		6/4 - 4/3
684-XM	1-1/4"	1.05-1.27	AC/MC	HCF		4/4 - 3/4
685-XM	1-1/2"	1.27-1.4	AC/MC	HCF		4-2/O - 3-350 MCM
686-XM	2"	1.4-1.94	AC/MC	HCF		3-4/0 - 4-250 MCM
687-XM	2-1/2"	1.94-2.4	MC			4-300 MCM - 4-500 MCM
688-XM	3"	2.4-2.9	MC			4-500 MCM - 4-750 MCM
689-XM	3-1/2"	2.6-3.2	MC			4-600 MCM - 4-750 MCM
691-DC2	1/2"	.42-.61	AC/MC/MCI-A	HCF/HCFMCI-A	3/8" FMC	14/2 - 10/3
801-DC2*	1/2"	.45-.625	MC/MCI-A	HCFMCI-A	3/8" FMC	14/4 - 10/4
801-DCI2*	1/2"	.45-.63	AC/MC/MCI-A		3/8" FMC	14/4 - 10/4

Bridgeport MCI-A Cable Fittings

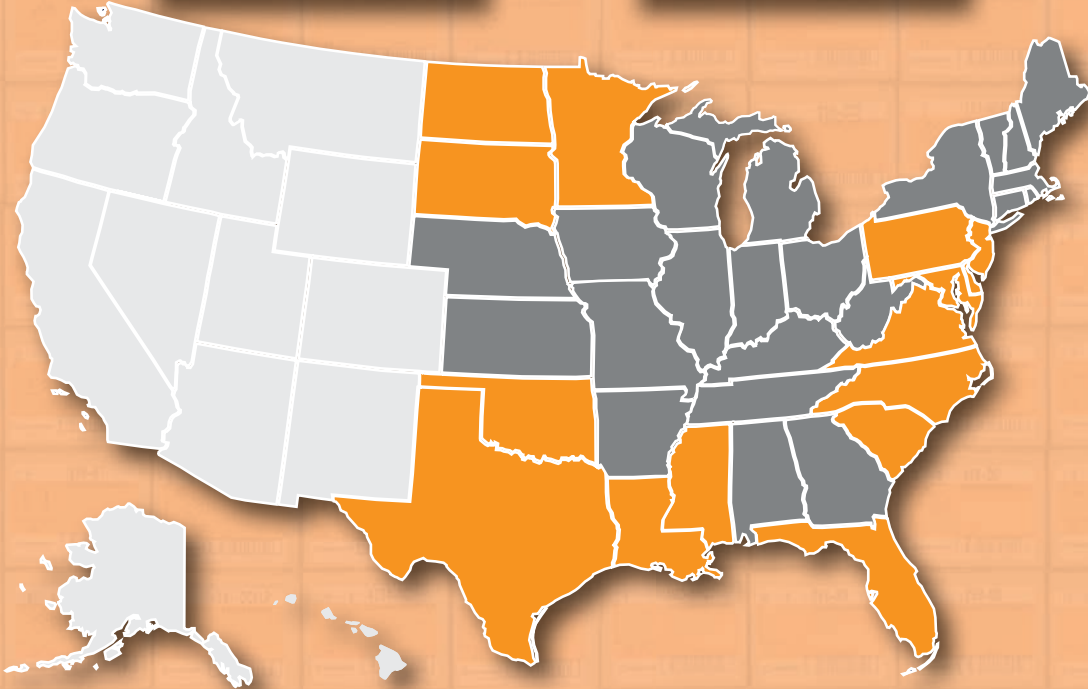
Cable Fitting	Enclosure Opening KO Size	Cable Outer Diameter (O.D.) Range	Cable Types Listed To: Note: Includes Steel and Aluminum	Healthcare Facility Cable	Flexible Metal Conduit Note: Includes Steel and Aluminum (RWFMC)	Recommended Cable Types & Notes Note: Verify with cable O.D. Includes Steel and Aluminum
802-DC2*	1/2"	.48-.58	AC/MC	HCF	3/8" FMC	12/2 - 10/3
802-DCI2	1/2"	.48-.58	AC/MC	HCF	3/8" FMC	12/2 - 10/3
802SP*	1/2"	.48-.58	AC/MC	HCF	3/8" FMC	12/2 - 10/3
802-MCIA2	1/2"	.42-.55	MC/MCI-A	HCFMCI-A		14/4 - 10/3
804-DC2	1/2"	.75-.875	MC		1/2" FMC	
804-DCI2	1/2"	.75-.875	MC		1/2" FMC	
806-DC2	3/4"	.875-1.00	MC		3/4" FMC	
806-DCI2	3/4"	.875-1.00	MC		3/4" FMC	
807-DC2	1"	1.187-1.312	MC		1" FMC	
807-DCI2	1"	1.187-1.312	MC		1" FMC	
808-DC2	1-1/4"	1.50-1.625	MC		1-1/4" FMC	
808-DCI2	1-1/4"	1.50-1.625	MC		1-1/4" FMC	
830-DC2	1/2"	.44-.61	AC	HCF	3/8" FMC	12/2 - 10/3
840SP*	1/2"	.44-.61	AC/MC/MCI-A	HCF/HCFMCI-A	3/8" FMC	14/4 - 10/3
845SP	1/2"	.43-.61	AC/MC/MCI-A	HCF/HCFMCI-A		14/2 - 10/3
84690SP	1/2"	.42-.61	AC/MC/MCI-A	HCF/HCFMCI-A	3/8" FMC	14/4 - 10/3
850SP	1/2"	.55-.61	AC/MC	HCF	3/8" FMC	12/2 - 10/3
851ASP	1/2"				1/2" FMC	
851-DC2	1/2"				1/2" FMC	
851-DCI2	1/2"				1/2" FMC	
851SP	1/2"				1/2" FMC	
895-DC2*	1/2"	.50-.61	JMC/TECK90			12/2 - 10/3
895-DC2C	1/2"	.50-.61	JMC/TECK90			12/2 - 10/3
895-DCI2*	1/2"	.50-.61	JMC/TECK90			12/2 - 10/3
4057-DC		.43-.61	AC/MC/MCI-A		3/8" FMC	14/2 - 10/3
4058-DC		.63-.89	AC/MC/MCI-A		1/2" FMC	10/4 - 6/4
4156-DC		.43-.52	AC/MC/MCI-A	HCF/HCFMCI-A	3/8" FMC	14/2 - 12/2
4157-DC		.43-.61	AC/MC/MCI-A	HCF/HCFMCI-A	3/8" FMC	14/2 - 10/3
4357-DC		.43-.61	AC/MC/MCI-A	HCF/HCFMCI-A	3/8" FMC	14/2 - 10/3
4457-DC		.43-.61	AC/MC/MCI-A	HCF/HCFMCI-A	3/8" FMC	14/2 - 10/3
5157-DC		.43-.61	AC/MC/MCI-A	HCF/HCFMCI-A	3/8" FMC	14/2 - 10/3
AMC-50*	1/2"	.40-.62	AC/MC/MCI-A	HCF/HCFMCI-A	3/8" FMC	14/2 - 10/3
AMC-50QI*	1/2"	.40-.62	AC/MC/MCI-A	HCF/HCFMCI-A	3/8" FMC	14/2 - 10/3
AMC-5075*	1/2"	.62-.92	AC/MC/MCI-A	HCF/HCFMCI-A	1/2" FMC	10/4 - 6/4
AMC-52	1/2"	.43-.62	AC/MC/MCI-A	HCF/HCFMCI-A	3/8" FMC	14/2 - 10/3
AMC-52QI	1/2"	.40-.61	AC/MC/MCI-A	HCF/HCFMCI-A	3/8" FMC	14/2 - 10/2
AMC-75*	3/4"	.56-.81	AC/MC	HCF	1/2" FMC	10/3 - 6/3
BL-17*	1/2"	.701-803	8/3 AC90	HCF	1/2" FMC	8/3 - 6/3
BL-17I*	1/2"	.701-803	8/3 AC90	HCF	1/2" FMC	8/3 - 6/3
BL-18	3/4"		6/3 AC90 ONLY		3/4" FMC	6/3
BL-18I	3/4"		6/3 AC90 ONLY		3/4" FMC	6/3
BL-19	1"		3/3 AC90		1" FMC	3/3
BL-19I	1"		3/3 AC90		1" FMC	3/3
SG3838ASP	1/2"	.42-.61	AC/MC/MCI-A	HCF/HCFMCI-A	3/8" FMC	14/2 - 10/3
SG38ASP*	1/2"	.43-.61	AC/MC/MCI-A	HCF/HCFMCI-A	3/8" FMC	14/4 - 10/3

**SEE THE DIFFERENCE
ORANGE MAKES™**

BRIDGEPORT TECH SALES MANAGER MARKET AREAS

**Nesco
West Canada**

**Nesco
East Canada**



Larry Beach,
360-722-0004
larryb@bptfittings.com



Wayne Beach,
508-728-6462
wayneb@bptfittings.com



Eric Cerasale,
203-673-9800
ericc@bptfittings.com



Alan Beach,
774-419-2015
alanb@bptfittings.com

Distributed by:



Bridgeport Fittings, Inc.
705 Lordship Blvd.
Stratford, CT 06615-7313

Voice: 203.377.5944
E-mail: sales@bptfittings.com



Printed in the U.S.A.
© 2017 Bridgeport Fittings, Inc. All rights reserved.



12/17 7500 BP-MC