

SNAP²IT[®] Duplex Connectors



3838AST



For EASIER
MC/AC Installations see
383810AST to 404010AST
(above)

Zinc die-cast. For AC • MCI-A • HCF steel and aluminum cable • Flexible metal conduit steel and aluminum (regular and reduced wall) • MCI cable • Continuous corrugated aluminum • AC90. SNAP-TITE[®] and SNAP2IT[®] products have been tested and listed by UL in accordance with UL's ground fault requirements. For additional information see page 7.

CATALOG NUMBER	UPC/DCI/NAED MFG #018997	TRADE SIZE	KO SIZE	UNIT PKG	STD PKG	DIM A	DIM B	DIM C	DIM D	CABLE RANGE
3838ST	10935	3/8	1/2	25	100	1.912	1.738	.970	.620	(2) .405 - .612
3838A	36200	3/8	1/2	25	100	1.772	1.738	.840	.620	(2) .405 - 6.12
3838AST*	36230	3/8	1/2	25	100	1.772	1.605	.840	.620	(2) .405 - .612
4040AST*	40351	3/8	1/2	25	100	1.772	1.605	.840	.620	(2) .485 - .612
4040A	40350	3/8	1/2	25	100	1.772	1.605	.840	.620	(2) .485 - .612

*Provided with insulated throat.

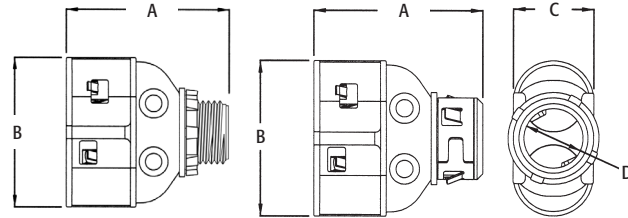
Provided with insulated throat and red tinted inside clip. See comparison on page E-1.

Refer to chart on page E-27 for a list of cable types.

See page E-30 and E-31 for MCI-A cable ranges.

Concrete tight when taped.

PATENTED.



SNAP²IT[®] Duplex Connectors



3838AST



For EASIER
MC/AC Installations see
383810AST to 404010AST
(above)

Zinc die-cast. For AC • MCI-A • HCF steel and aluminum cable • Flexible metal conduit steel and aluminum (regular and reduced wall) • MCI cable • Continuous corrugated aluminum • AC90. SNAP-TITE[®] and SNAP2IT[®] products have been tested and listed by UL in accordance with UL's ground fault requirements. For additional information see page 7.

CATALOG NUMBER	UPC/DCI/NAED MFG #018997	TRADE SIZE	KO SIZE	UNIT PKG	STD PKG	DIM A	DIM B	DIM C	DIM D	CABLE RANGE
3838ST	10935	3/8	1/2	25	100	1.912	1.738	.970	.620	(2) .405 - .612
3838A	36200	3/8	1/2	25	100	1.772	1.738	.840	.620	(2) .405 - 6.12
3838AST*	36230	3/8	1/2	25	100	1.772	1.605	.840	.620	(2) .405 - .612
4040AST*	40351	3/8	1/2	25	100	1.772	1.605	.840	.620	(2) .485 - .612
4040A	40350	3/8	1/2	25	100	1.772	1.605	.840	.620	(2) .485 - .612

*Provided with insulated throat.

Provided with insulated throat and red tinted inside clip. See comparison on page E-1.

Refer to chart on page E-27 for a list of cable types.

See page E-30 and E-31 for MCI-A cable ranges.

Concrete tight when taped.

PATENTED.

