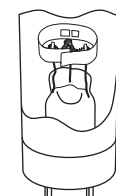
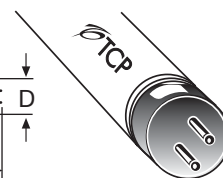
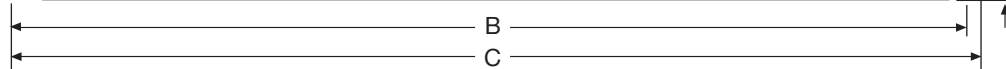


TCP Item Number: 31054841 Lamp code: F54T5HO/841



Cathode Guarded

Average Rated Life (hours)
 3 hours per start ----- 24,000

TCLP Compliant ----- Yes
 Low Mercury ----- Yes

Physical Characteristics

Lamp type ----- T5
 Base type ----- Miniature Bipin
 Lamp Material ----- Soda Lime
 Phosphor ----- Tri-Phosphor

Lamp Diameter (inches)
 Nominal (D) ----- .625
 Maximum (D) ----- .670

Overall Length (inches)
 Nominal (C) ----- 45.2
 Maximum (C) ----- 45.8

Face to End of opposing pin (inches)
 Maximum (B) ----- 45.52
 Minimum (B) ----- 45.42

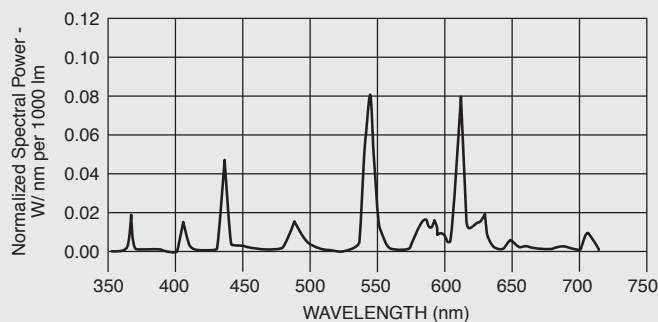
Photometric Characteristics

Initial Lumens ----- 5000
 Mean Lumens (40% of rated life) ----- 4750
 Correlated Color Temperature (Kelvin) ----- 3500
 Color Rendering Index (CRI) ----- 85
 Normal Efficacy (Lumens/Watts) ----- 92.6

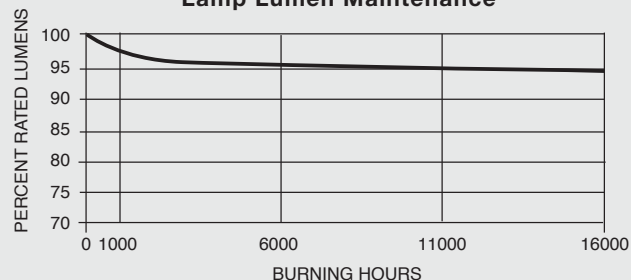
Electrical Characteristics

Lamp Watts ----- 54
 Nominal Lamp Volts ----- 118
 Nominal Lamp Operating Frequency (Hz) -- 50-60 Hz
 Min. Starting Temperature (°C) ----- -20
 Min. Starting Lamp Voltage at 10°C ----- 520
 Min. Cathode Resistance (Rh/Rc) ----- 4.25
 Max. Cathode Resistance (Rh/Rc) ----- 6.5

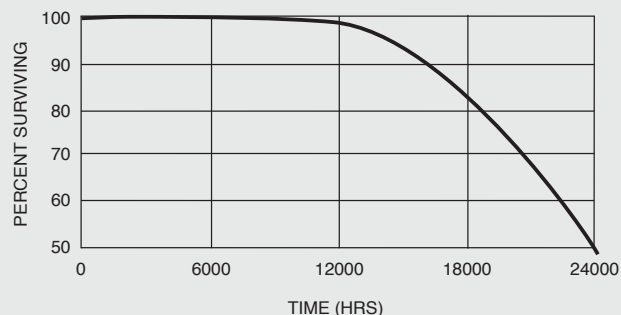
Spectral Power Distribution



Lamp Lumen Maintenance



Typical Lamp Mortality

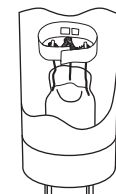
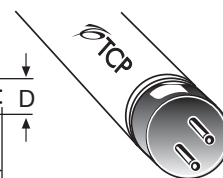
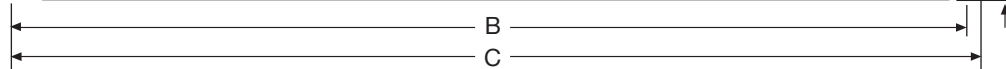


24 MONTH STANDARD WARRANTY

For the most up-to-date specs, please visit www.tcp.com

*Testing performed with Instant Start Ballast.

TCP Item Number: 31054841 Lamp code: F54T5HO/841



Cathode Guarded

Average Rated Life (hours)
 3 hours per start ----- 24,000

TCLP Compliant ----- Yes
 Low Mercury ----- Yes

Physical Characteristics

Lamp type ----- T5
 Base type ----- Miniature Bipin
 Lamp Material ----- Soda Lime
 Phosphor ----- Tri-Phosphor

Lamp Diameter (inches)
 Nominal (D) ----- .625
 Maximum (D) ----- .670

Overall Length (inches)
 Nominal (C) ----- 45.2
 Maximum (C) ----- 45.8

Face to End of opposing pin (inches)
 Maximum (B) ----- 45.52
 Minimum (B) ----- 45.42

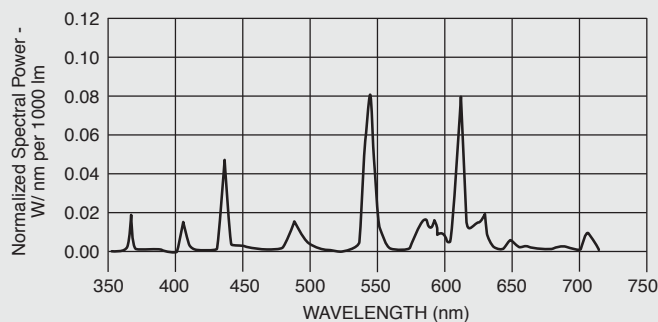
Photometric Characteristics

Initial Lumens ----- 5000
 Mean Lumens (40% of rated life) ----- 4750
 Correlated Color Temperature (Kelvin) ----- 3500
 Color Rendering Index (CRI) ----- 85
 Normal Efficacy (Lumens/Watts) ----- 92.6

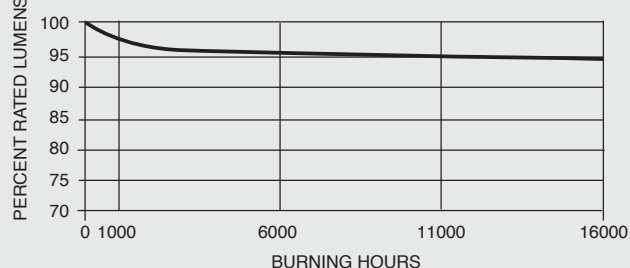
Electrical Characteristics

Lamp Watts ----- 54
 Nominal Lamp Volts ----- 118
 Nominal Lamp Operating Frequency (Hz) -- 50-60 Hz
 Min. Starting Temperature (°C) ----- -20
 Min. Starting Lamp Voltage at 10°C ----- 520
 Min. Cathode Resistance (Rh/Rc) ----- 4.25
 Max. Cathode Resistance (Rh/Rc) ----- 6.5

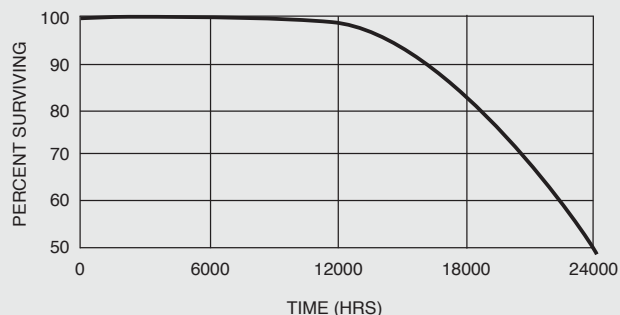
Spectral Power Distribution



Lamp Lumen Maintenance



Typical Lamp Mortality



24 MONTH STANDARD WARRANTY

For the most up-to-date specs, please visit www.tcp.com

*Testing performed with Instant Start Ballast.