

SPECIFICATION SHEET

PHOTOCONTROL ACCESSORIES FOR TURN-LOCK CONTROLS

APPLICATIONS MOUNTING BRACKET

Utility mounting bracket for 1/2" threaded conduit photocontrols.

REPLACEMENT CAPS

5500 replaces photocontrol to change light fixture to always ON. 5500-OC replaces photocontrol to change light fixture to always OFF. Durable materials and gasket provide longevity and weatherproof protection.

RECEPTACLE 2223

120-480V 50/60 Hz 15 amp maximum receptacle with color-coded 12" long, #14 leads, gasket and two mounting screws.

RECEPTACLE 2224

120-480V 50/60 Hz 15 amp maximum receptacle with color-coded 12" long, #14 leads, mounting bracket and one mounting screw.

RECEPTACLE 2421

120-480V 50/60 Hz 15 amp maximum receptacle with color-coded 12" long, #14 leads, plastic housing, lock nut (with 1/2" NPT) and a mounting bracket.

MOUNTING BRACKET

DEVICE	CAT. NO.	UPC CODE	DESCRIPTION
--------	----------	----------	-------------



73866 62020 Mounting Bracket

REPLACEMENT CAPS



DEVICE	CAT. NO.	UPC CODE	DESCRIPTION
--------	----------	----------	-------------



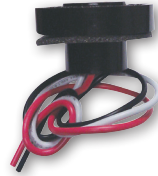
5500 61130 Shorting cap
480VAC max
1800W Tungsten
1800VA Ballast



5500-OC 61132 Open cap
480VAC max
(Black housing)

RECEPTACLE

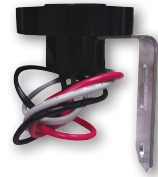
DEVICE	CAT. NO.	UPC CODE	DESCRIPTION
--------	----------	----------	-------------



2223 61025 Receptacle with gasket

RECEPTACLE

DEVICE	CAT. NO.	UPC CODE	DESCRIPTION
--------	----------	----------	-------------



2224 61026 Receptacle and mounting bracket

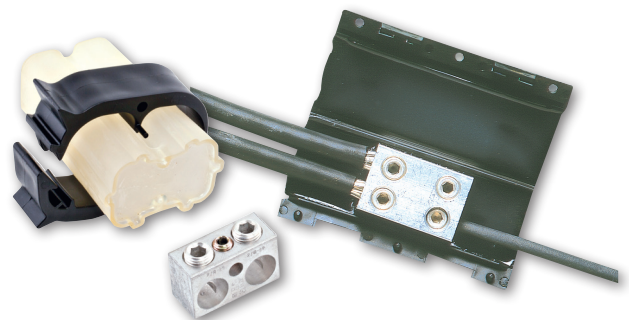
RECEPTACLE

DEVICE	CAT. NO.	UPC CODE	DESCRIPTION
--------	----------	----------	-------------



2421 61021 Receptacle with plastic housing and bracket

NSi offers many splicing options to complete the pole installation. See the catalog splicing section pages 211- 232.



SPECIFICATION SHEET

PHOTOCONTROL ACCESSORIES FOR TURN-LOCK CONTROLS

APPLICATIONS MOUNTING BRACKET

Utility mounting bracket for 1/2" threaded conduit photocontrols.

REPLACEMENT CAPS

5500 replaces photocontrol to change light fixture to always ON. 5500-OC replaces photocontrol to change light fixture to always OFF. Durable materials and gasket provide longevity and weatherproof protection.

RECEPTACLE 2223

120-480V 50/60 Hz 15 amp maximum receptacle with color-coded 12" long, #14 leads, gasket and two mounting screws.

RECEPTACLE 2224

120-480V 50/60 Hz 15 amp maximum receptacle with color-coded 12" long, #14 leads, mounting bracket and one mounting screw.

RECEPTACLE 2421

120-480V 50/60 Hz 15 amp maximum receptacle with color-coded 12" long, #14 leads, plastic housing, lock nut (with 1/2" NPT) and a mounting bracket.

MOUNTING BRACKET

DEVICE	CAT. NO.	UPC CODE	DESCRIPTION
--------	----------	----------	-------------



73866 62020 Mounting Bracket

REPLACEMENT CAPS ETL US

DEVICE	CAT. NO.	UPC CODE	DESCRIPTION
--------	----------	----------	-------------



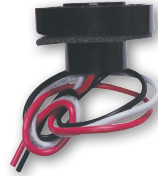
5500 61130 Shorting cap
480VAC max
1800W Tungsten
1800VA Ballast



5500-OC 61132 Open cap
480VAC max
(Black housing)

RECEPTACLE cULus

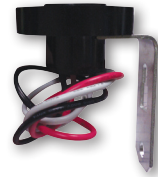
DEVICE	CAT. NO.	UPC CODE	DESCRIPTION
--------	----------	----------	-------------



2223 61025 Receptacle with gasket

RECEPTACLE cULus

DEVICE	CAT. NO.	UPC CODE	DESCRIPTION
--------	----------	----------	-------------



2224 61026 Receptacle and mounting bracket

RECEPTACLE cULus

DEVICE	CAT. NO.	UPC CODE	DESCRIPTION
--------	----------	----------	-------------



2421 61021 Receptacle with plastic housing and bracket

NSi offers many splicing options to complete the pole installation. See the catalog splicing section pages 211- 232.

