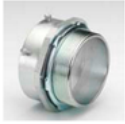




ELLIOTT ELECTRIC SUPPLY

We Deliver...Lower Cost, Quality Products, & Personal Service

1732 South Business 287
75110-0000, TX Corsicana
Phone: 903-872-9696
Fax: 903-872-9980



238US 3-1/2" Usa STL Emt Set Screw Conn

Nsi Industries

Catalog Number	238US
Manufacturer	Nsi Industries
Description	Connector, Set Screw, Made In The Usa, Size 3 1/2 Inch
Weight per unit	2.1 (lbs/each)
Product Category	Rigid Conduit Fittings - Steel

Features

Connector Type	SET SCREW
insulation	False
media	Yes

Material, Color, and Finish

Finish	Zinc Electroplated
--------	--------------------

Dimensions and Weight

Size	3-1/2
------	-------

Descriptions

Description	3-1/2" USA STL EMT SET SCREW CONN
extra long description	BPT 238-US 3-1/2 IN Usa Emt Steel S
Long Description	Connector, Set Screw, Made in the USA, Size 3 1/2 Inch
Product Type	3-1/2 In Usa Emt Steel SS Conn, Box Of 6
Special Features	Concrete Tight

Manufacturer Information

Brand	Nsi Industries
GTIN	00781747232380
Manufacturers Part Number	238-US
UPC	781747232380

Taxonomies, Classifications, and Categories

Type	CONNECTOR
------	-----------

Trade Size

Trade Size	3-1/2
------------	-------

Packaging

Carton	6
Weight Per each	2.1

Uses, Certifications, and Standards

Application	Used to secure steel EMT to box or enclosure. Concrete tight when taped.
standard	UL