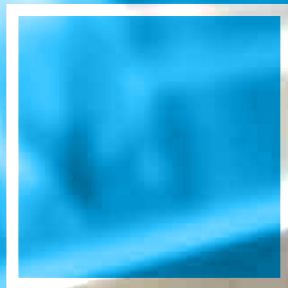
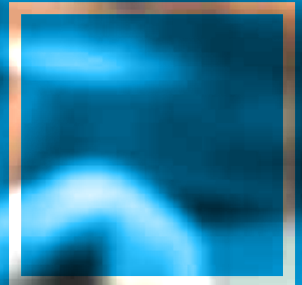
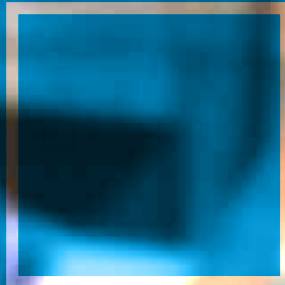
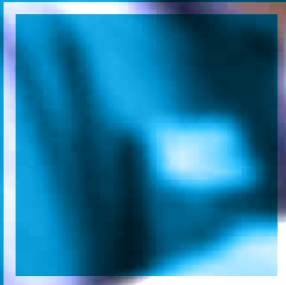
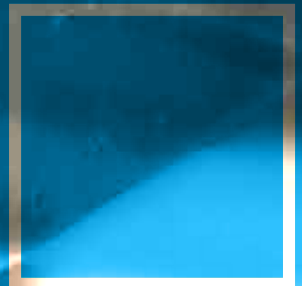
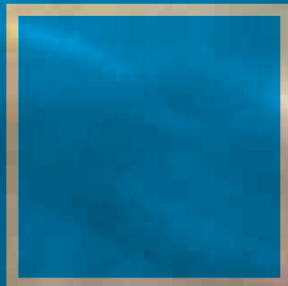


2014-2015 PRODUCT CATALOG

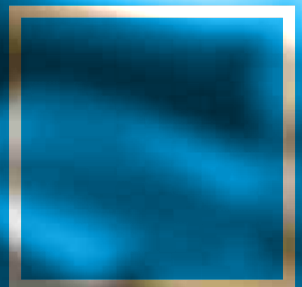
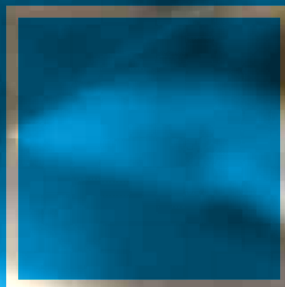
Electrical Enclosure Solutions



**independent
in-stock
on-time**



**800-657-6100
unitymfg.com**



Welcome to Unity Manufacturing!

Unity Manufacturing is an independent, Texas-based manufacturer of electrical enclosures. For three generations, customers have chosen Unity Manufacturing for our in-stock inventory and reliable on-time delivery.

Richard "Dick" Buferd Sr. founded the family business in 1970. Dick soon retired and his son Rick Buferd led the evolution

of the business from a handful of employees to a full-scale operation with more than 100 employees. Richard Buferd III joined the company in 2009 to advance the family tradition of uncompromising customer service.

Today, just as much as ever, listening to and understanding customer needs is our top priority. In fact, your voice is critical to helping us find ways to serve you better. Contact us today to experience the personal service and product quality that continue to distinguish Unity Manufacturing.



Rick Buferd
President

**Independent
In-Stock
On-Time**





TABLE OF CONTENTS



Our Mission

INDEPENDENT

As an independently owned manufacturer, Unity Manufacturing has the flexibility to deliver an unrivaled customer service experience.

IN-STOCK

With one of the largest inventories in Texas, you can depend on Unity to have what you need when you need it.

ON-TIME

We understand that your project timelines are more demanding than ever. With competitive lead times and reliable on-time delivery, you can count on Unity Manufacturing to keep you on track.

Type 1 Enclosures..... 3 - 10

- Screw Cover.....4
- Hinge Cover.....6
- Recessed Cover.....7
- Panel Enclosures.....8
- Telephone Cabinets.....9

Type 3 and 3R Enclosures..... 11 - 16

- Screw Cover.....12
- Hinge Cover.....15

Cable Management Solutions 17 - 26

- Type 1 Wireway18
- Type 1 Wireway Fittings.....21
- Type 3R Wiring Troughs.....25

Utility and Storage Cabinets 27 - 38

- Current Transformer Cabinets28
- AEP Approved CT Cans36
- Type 3R Telco Boxes37
- Spare Fuse Cabinets37

Hardware and Accessories 39 - 44

- Back Panels.....40
- Hardware41
- Hole Seals43
- Louver Plate Kits43
- Touch-up Paint43

Custom Enclosure Solutions..... 45 - 48

4



12



29



42



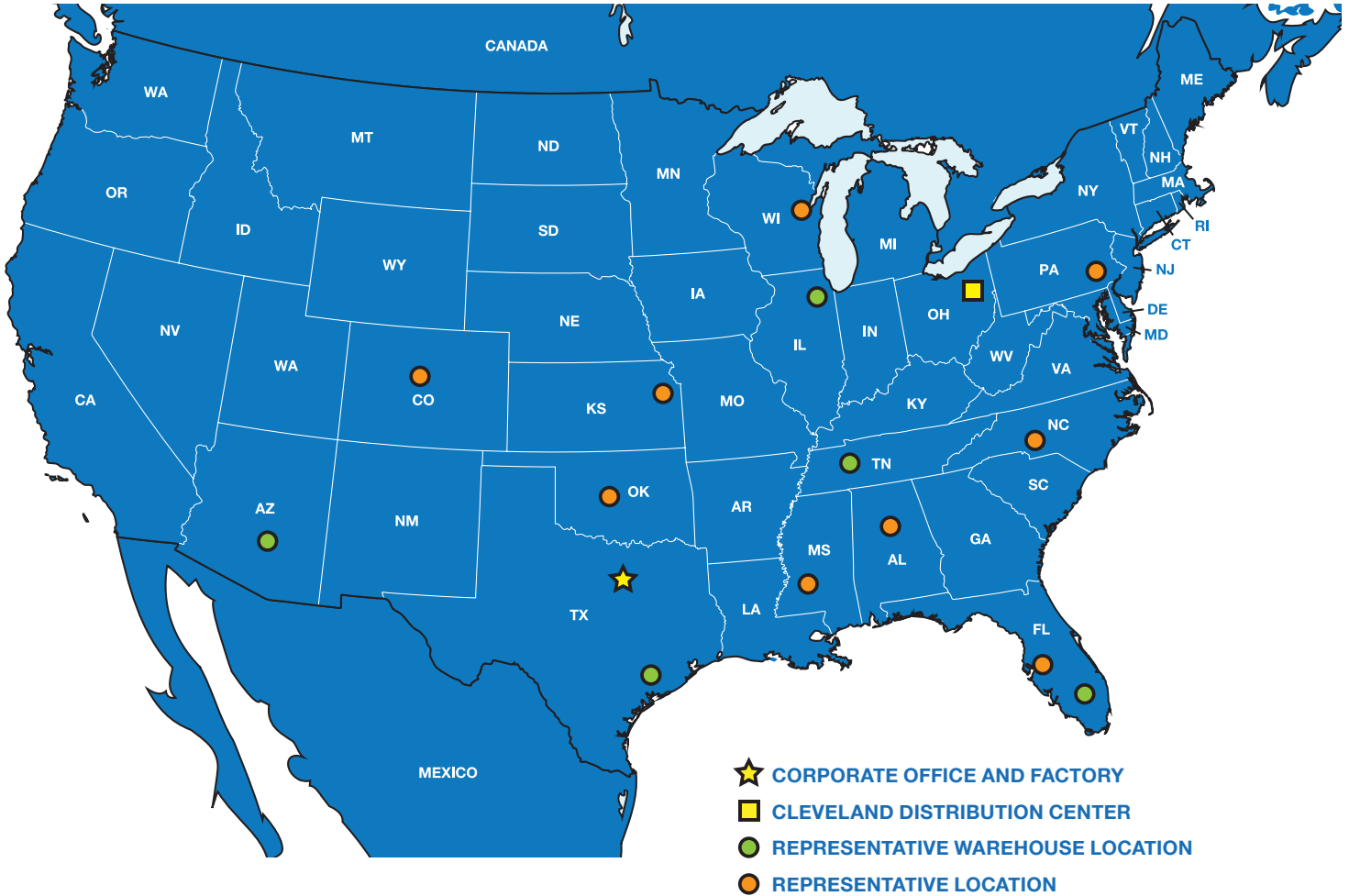
18



46



CONTACT UNITY



Contact Us

Unity Manufacturing’s nationwide network of sales representatives are your source for Type 1, 3, and 3R electrical enclosures and custom, engineered-to-order solutions. Our robust inventory levels enable us to meet even the most challenging and immediate customer needs with speed, accuracy and reliability.



CORPORATE OFFICE AND MANUFACTURING PLANT

210 E Buckingham Rd
Garland, TX 75040

Main Phone 972-272-9502
Toll-Free Phone 800-657-6100
Toll-Free Fax 800-677-5269

orders@unitymfg.com
www.unitymfg.com

TYPE 1 ENCLOSURES

Screw Cover

Hinge Cover

Recessed Cover

Panel Enclosures

Telephone Cabinets



TYPE 1 ENCLOSURES



Screw Cover – Powder Coated

- Designed for use as junction and pull boxes
- Stock inventory sizes from 4x4x4 to 48x48x18
- Custom sizes and modifications available

SPECIFICATIONS

- Manufactured from code gauge, low carbon steel
- Covers feature keyhole slots which allow the plated screws to stay in place and make for easy installation
- Embossed grounding provision on sizes up to 24x24x12
- Holes are incorporated into the back of enclosure for easy mounting
- Available with or without knockouts

FINISH

- Standard: Gunsmoke Gray Powder Coated
- Optional powder coat colors and custom silkscreen printing available (see pg. 48)

INDUSTRY STANDARDS

- Type 1 - UL 50 and UL 50E: Intended for indoor use primarily to provide a degree of protection against limited amounts of falling dirt.
- RoHS compliant

ACCESSORIES



Replacement Screw Cover Lid – Powder Coated



Flush Cover Lid – Powder Coated

CATALOG NUMBER	UPC (761515)	SIZE (W"xH"xD")	WGT	LIST PRICE	SCREW COVER	LIST PRICE	FLUSH COVER	LIST PRICE
444SC	22010	4x4x4	1	\$17.78	44SC	\$8.89	44FC	\$8.89
664SC	22130	6x6x4	3	\$20.00	66SC	\$9.95	66FC	\$9.95
666SC	22140	6x6x6	3	\$25.56	66SC	\$9.95	66FC	\$9.95
684SC	22160	6x8x4	3	\$26.67	68SC	\$10.00	68FC	\$10.00
6124SC	22166	6x12x4	5	\$35.56	612SC	\$14.89	612FC	\$14.89
884SC	22280	8x8x4	4	\$31.11	88SC	\$12.22	88FC	\$12.22
886SC	22290	8x8x6	5	\$35.56	88SC	\$12.22	88FC	\$12.22
8104SC	22320	8x10x4	5	\$33.33	810SC	\$14.44	810FC	\$14.44
8124SC	22360	8x12x4	6	\$37.78	812SC	\$14.89	812FC	\$14.89
10104SC	22430	10x10x4	6	\$37.78	1010SC	\$15.55	1010FC	\$15.55
10106SC	22440	10x10x6	7	\$46.67	1010SC	\$15.55	1010FC	\$15.55
12124SC	22580	12x12x4	8	\$47.78	1212SC	\$21.11	1212FC	\$21.11
12126SC	22590	12x12x6	10	\$60.00	1212SC	\$21.11	1212FC	\$21.11
12184SC	22700	12x18x4	11	\$73.33	1218SC	\$25.78	1218FC	\$25.78
12186SC	22710	12x18x6	14	\$84.44	1218SC	\$25.78	1218FC	\$25.78
444SCNK	22012	4x4x4	1	\$17.78	44SC	\$8.89	44FC	\$8.89
664SCNK	22132	6x6x4	3	\$20.00	66SC	\$9.95	66FC	\$9.95
666SCNK	22142	6x6x6	3	\$25.56	66SC	\$9.95	66FC	\$9.95
884SCNK	22282	8x8x4	4	\$31.11	88SC	\$12.22	88FC	\$12.22
886SCNK	22292	8x8x6	5	\$35.56	88SC	\$12.22	88FC	\$12.22
888SCNK	22300	8x8x8	6	\$57.78	88SC	\$12.22	88FC	\$12.22
10104SCNK	22432	10x10x4	6	\$37.78	1010SC	\$15.55	1010FC	\$15.55
10106SCNK	22442	10x10x6	7	\$46.67	1010SC	\$15.55	1010FC	\$15.55
12124SCNK	22582	12x12x4	8	\$47.78	1212SC	\$21.11	1212FC	\$21.11
12126SCNK	22592	12x12x6	10	\$60.00	1212SC	\$21.11	1212FC	\$21.11
12128SCNK	22600	12x12x8	11	\$80.00	1212SC	\$21.11	1212FC	\$21.11
121210SCNK	22610	12x12x10	13	\$111.11	1212SC	\$21.11	1212FC	\$21.11
121212SCNK	22620	12x12x12	15	\$133.33	1212SC	\$21.11	1212FC	\$21.11
16164SCNK	22940	16x16x4	12	\$84.18	1616SC	\$27.78	1616FC	\$27.78
16166SCNK	22950	16x16x6	14	\$97.78	1616SC	\$27.78	1616FC	\$27.78
18184SCNK	23020	18x18x4	16	\$96.67	1818SC	\$28.89	1818FC	\$28.89
18186SCNK	23030	18x18x6	19	\$106.67	1818SC	\$28.89	1818FC	\$28.89
18188SCNK	23040	18x18x8	20	\$133.33	1818SC	\$28.89	1818FC	\$28.89
181810SCNK	23050	18x18x10	23	\$186.67	1818SC	\$28.89	1818FC	\$28.89
181812SCNK	23060	18x18x12	25	\$186.67	1818SC	\$28.89	1818FC	\$28.89
18246SCNK	23100	18x24x6	24	\$194.44	1824SC	\$40.00	1824FC	\$40.00
24244SCNK	23290	24x24x4	27	\$231.11	2424SC	\$45.56	2424FC	\$45.56
24246SCNK	23300	24x24x6	30	\$222.22	2424SC	\$45.56	2424FC	\$45.56
24248SCNK	23310	24x24x8	34	\$248.89	2424SC	\$45.56	2424FC	\$45.56
242410SCNK	23320	24x24x10	38	\$346.67	2424SC	\$45.56	2424FC	\$45.56
242412SCNK	23330	24x24x12	44	\$355.56	2424SC	\$45.56	2424FC	\$45.56
30306SCNK	23340	30x30x6	45	\$533.33	3030SC	\$137.24	3030FC	\$137.24
30308SCNK	23480	30x30x8	51	\$533.33	3030SC	\$137.24	3030FC	\$137.24
303010SCNK	23530	30x30x10	55	\$555.56	3030SC	\$137.24	3030FC	\$137.24
303012SCNK	23580	30x30x12	65	\$555.56	3030SC	\$137.24	3030FC	\$137.24
36366SCNK	23440	36x36x6	60	\$533.33	3636SC	\$225.92	3636FC	\$225.92
36368SCNK	23500	36x36x8	78	\$553.33	3636SC	\$225.92	3636FC	\$225.92
363610SCNK	23550	36x36x10	79	\$711.11	3636SC	\$225.92	3636FC	\$225.92
363612SCNK	23600	36x36x12	87	\$711.11	3636SC	\$225.92	3636FC	\$225.92
363618SCNK	23602	36x36x18	150	\$1,300.00	3636SC	\$225.92	3636FC	\$225.92
48488SCNK	23505	48x48x8	195	\$1,502.22	4848SC	\$300.00	n/a	n/a
484812SCNK	23605	48x48x12	220	\$1,274.76	4848SC	\$300.00	n/a	n/a
484818SCNK	23610	48x48x18	276	\$1,808.00	4848SC	\$300.00	n/a	n/a

WITH KNOCK-OUTS

WITHOUT KNOCK-OUTS

TYPE 1 ENCLOSURES

TYPE 3 AND 3R ENCLOSURES

CABLE MANAGEMENT SOLUTIONS

UTILITY AND STORAGE CABINETS

HARDWARE AND ACCESSORIES

CUSTOM ENCLOSURE SOLUTIONS

TYPE 1 ENCLOSURES



Screw Cover – Galvanized

- Designed for use as junction and pull boxes
- Stock inventory sizes from 4x4x4 to 48x48x18
- Custom sizes and modifications available

SPECIFICATIONS

- Manufactured from G90 galvanized steel
- Covers feature keyhole slots which allow the plated screws to stay in place and make for easy installation

FINISH

- G90 galvanized steel

INDUSTRY STANDARDS

- Type 1 - UL 50 and UL 50E: Intended for indoor use primarily to provide a degree of protection against limited amounts of falling dirt.
- RoHS compliant

ACCESSORIES



Replacement Screw Cover Lid – Galvanized

- Manufactured from G90 galvanized steel
- Keyhole-slotted covers allow plated screws to stay in place

CATALOG NUMBER	UPC (761515)	SIZE (W"xH"xD")	WGT	LIST PRICE	SCREW COVER	LIST PRICE
444SCG	25010	4x4x4	1	\$17.78	44SCG	\$8.89
664SCG	25012	6x6x4	3	\$20.00	66SCG	\$9.95
666SCG	25030	6x6x6	3	\$25.56	66SCG	\$9.95
884SCG	25014	8x8x4	4	\$31.11	88SCG	\$12.22
886SCG	25032	8x8x6	5	\$35.56	88SCG	\$12.22
10104SCG	25016	10x10x4	6	\$37.78	1010SCG	\$15.55
10106SCG	25034	10x10x6	7	\$46.67	1010SCG	\$15.55
12124SCG	25018	12x12x4	8	\$47.78	1212SCG	\$21.11
12126SCG	25036	12x12x6	10	\$60.00	1212SCG	\$21.11
12128SCG	25045	12x12x8	11	\$80.00	1212SCG	\$21.11
16166SCG	25038	16x16x6	14	\$105.56	1616SCG	\$27.78
18184SCG	25020	18x18x4	16	\$96.67	1818SCG	\$28.89
18186SCG	25040	18x18x6	19	\$106.67	1818SCG	\$28.89
18188SCG	25047	18x18x8	20	\$133.33	1818SCG	\$28.89
24244SCG	25022	24x24x4	27	\$231.11	2424SCG	\$45.56
24246SCG	25041	24x24x6	30	\$222.22	2424SCG	\$45.56
24248SCG	25049	24x24x8	34	\$248.89	2424SCG	\$45.56
242412SCG	25050	24x24x12	44	\$355.56	2424SCG	\$45.56
36368SCG	23501	36x36x8	78	\$553.33	3636SCG	\$225.92
363612SCG	25052	36x36x12	87	\$711.11	3636SCG	\$225.92
363618SCG	26603	36x36x18	105	\$1,300.00	3636SCG	\$225.92
484812SCG	42940	48x48x12	220	\$1,274.76	4848SCG	\$300.00
484818SCG	23612	48x48x18	276	\$1,808.00	4848SCG	\$300.00

TYPE 1 ENCLOSURES

TYPE 3 AND 3R ENCLOSURES

CABLE MANAGEMENT SOLUTIONS

UTILITY AND STORAGE CABINETS

HARDWARE AND ACCESSORIES

CUSTOM ENCLOSURE SOLUTIONS

TYPE 1 ENCLOSURES



Hinge Cover – Powder Coated

- Designed for use as surface mounted junction, service, switch and cut out boxes
- Stock inventory sizes from 6x6x4 to 24x24x6
- Custom sizes and modifications available

SPECIFICATIONS

- Manufactured from code gauge, low carbon steel
- Mounting holes provided
- Hinged, stamped hinge standard through 18" height
- Recessed plated pull ring standard to 18x18, large pull down hasp standard on boxes larger than 18x18
- Other hardware options available
- Available with or without knockouts
- Galvanized available upon request

FINISH

- Standard: Gunsmoke Gray Powder Coated
- Optional powder coat colors and custom silkscreen printing available (see pg. 48)

INDUSTRY STANDARDS

- Type 1 - UL 50 and UL 50E: Intended for indoor use primarily to provide a degree of protection against limited amounts of falling dirt.
- RoHS compliant



W/ KNOCK-OUTS	CATALOG NUMBER	UPC (761515)	SIZE (W"xH"xD")	WGT	LIST PRICE
	664HC	32065	6x6x4	3	\$37.78
	884HC	32145	8x8x4	4	\$40.00
	10104HC	32235	10x10x4	6	\$51.11
	12124HC	32300	12x12x4	8	\$57.78
	12126HC	32305	12x12x6	10	\$71.11
12186HC	32350	12x18x6	14	\$108.89	
W/O UT	CATALOG NUMBER	UPC (761515)	SIZE (W"xH"xD")	WGT	LIST PRICE
	12124HCNK	32302	12x12x4	8	\$57.78
	18186HCNK	32400	18x18x6	19	\$142.22
	24246HCNK	32420	24x24x6	30	\$257.78

TYPE 1 ENCLOSURES

TYPE 3 AND 3R ENCLOSURES

CABLE MANAGEMENT SOLUTIONS

UTILITY AND STORAGE CABINETS

HARDWARE AND ACCESSORIES

CUSTOM ENCLOSURE SOLUTIONS

TYPE 1 ENCLOSURES



Recessed Cover – Powder Coated

- Designed to enclose electrical and electronic controls, components and instruments which do not require a dust, oil or water tight environment
- Stock inventory sizes from 13x18x6 to 30x48x10
- Custom sizes and modifications available

SPECIFICATIONS

- Manufactured from code gauge, low carbon steel
- Enclosure includes installed perforated back panel with 1/8" holes on 1/4" staggered centers, facilitates many applications and configurations
- Continuous hinge
- Keyed cam action quad lock (13x18x6 enclosure features a cylinder keylock and does not have a recessed cover)
- Locks feature standardized key for ease of access

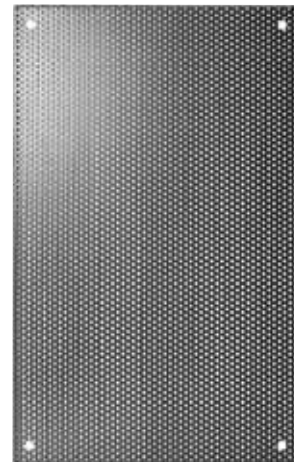
FINISH

- Standard: Gunsmoke Gray Powder Coated
- Optional powder coat colors and custom silkscreen printing available (see pg. 48)

INDUSTRY STANDARDS

- Type 1 - UL 50 and UL 50E: Intended for indoor use primarily to provide a degree of protection against limited amounts of falling dirt.
- RoHS compliant

ACCESSORIES



Replacement Back Panel – Perforated

- Perforated back panel with 1/8" holes on 1/4" staggered centers

CATALOG NUMBER	UPC (761515)	SIZE (W"xH"xD")	WGT	LIST PRICE	BACK PANEL	LIST PRICE
13186RC	39100	13x18x6	20	\$267.16	PP1318-RC	\$34.88
18186RC	39102	18x18x6	22	\$402.80	PP1818-RC	\$51.92
181810RC	39110	18x18x10	30	\$432.84	PP1818-RC	\$51.92
24246RC	39104	24x24x6	36	\$444.96	PP2424-RC	\$131.72
242410RC	39120	24x24x10	50	\$471.64	PP2424-RC	\$131.72
24366RC	39106	24x36x6	52	\$622.08	PP2436-RC	\$192.92
243610RC	39130	24x36x10	65	\$694.64	PP2436-RC	\$192.92
303610RC	39140	30x36x10	80	\$790.80	PP3036-RC	\$246.08
304810RC	39150	30x48x10	100	\$1,004.56	PP3048-RC	\$284.84

TYPE 1 ENCLOSURES

TYPE 3 AND 3R ENCLOSURES

CABLE MANAGEMENT SOLUTIONS

UTILITY AND STORAGE CABINETS

HARDWARE AND ACCESSORIES

CUSTOM ENCLOSURE SOLUTIONS

TYPE 1 ENCLOSURES



Panel Enclosure – Powder Coated

- Designed to enclose electrical and electronic controls, components and instruments which do not require a dust, oil or water tight environment
- Stock inventory sizes from 8x8x4 to 30x36x8-5/8
- Custom sizes and modifications available



SPECIFICATIONS

- Manufactured from code gauge, low carbon steel
- Mounting holes provided
- Hinged
- Coin latch standard
- Back panel sold separately
- Other hardware options available
- Galvanized available

FINISH

- Standard: Gunsmoke Gray Powder Coated
- Optional powder coat colors and custom silkscreen printing available (see pg. 48)

INDUSTRY STANDARDS

- Type 1 - UL 50 and UL 50E: Intended for indoor use primarily to provide a degree of protection against limited amounts of falling dirt.
- RoHS compliant

ACCESSORIES

CATALOG NUMBER	UPC (761515)	SIZE (W"xH"xD")	WGT	LIST PRICE	BACK PANEL	LIST PRICE
PE884CLSO	36010	8x8x4	5	\$100.88	SP88-IS	\$11.25
PE10124CLSO	36020	10x12x4	8	\$131.56	SP1012-IS	\$17.88
PE12124CLSO	36030	12x12x4	10	\$148.88	SP1212-IS	\$21.28
PE10106CLSO	36040	10x10x6	8	\$140.48	SP1010-IS	\$15.40
PE10126CLSO	36050	10x12x6	9	\$152.88	SP1012-IS	\$17.88
PE12126CLSO	36060	12x12x6	11	\$168.48	SP1212-IS	\$21.28
PE12166625CLSO	36080	12x16x6.625	17	\$276.88	SP1216-IS	\$26.84
PE16166625CLSO	36090	16x16x6.625	20	\$307.56	1SP1616-IS	\$32.92
PE16206625CLSO	36095	16x20x6.625	23	\$342.24	1SP1620-IS	\$40.52
PE16208625CLSO	36140	16x20x8.625	27	\$372.24	1SP1620-IS	\$40.52
PE20246625CLSO	36100	20x24x6.625	26	\$412.88	1SP2024-IS	\$62.08
PE20248625CLSO	36150	20x24x8.625	38	\$452.12	1SP2024-IS	\$62.08
PE24246625CLSO	36110	24x24x6.625	28	\$421.76	SP2424-IS	\$135.72
PE24248625CLSO	36160	24x24x8.625	42	\$462.92	SP2424-IS	\$135.72
PE24306625CLSO	36120	24x30x6.625	36	\$468.88	SP2430-IS	\$164.72
PE24366625CLSO	36130	24x36x6.625	44	\$541.76	SP2436-IS	\$197.08
PE24368625CLSO	36170	24x36x8.625	50	\$598.68	SP2436-IS	\$197.08
PE30308625CLSO	36180	30x30x8.625	51	\$586.08	SP3030-IS	\$231.88
PE30368625CLSO	36190	30x36x8.625	65	\$667.56	SP3036-IS	\$262.84



Back Panel – White Powder Coated

- Back panel sold separately
- Manufactured from code gauge, low carbon steel
- Galvanized available



TYPE 1 ENCLOSURES

TYPE 3 AND 3R ENCLOSURES

CABLE MANAGEMENT SOLUTIONS

UTILITY AND STORAGE CABINETS

HARDWARE AND ACCESSORIES

CUSTOM ENCLOSURE SOLUTIONS



Powder Coated

Telephone Cabinet – Flush Mount

- Designed to enclose communication wiring, signal systems, junction or pull box and switch enclosure
- Stock inventory sizes from 8x8x4 to 24x36x6
- Custom sizes and modifications available

SPECIFICATIONS

- Manufactured from code gauge, low carbon steel
- Key lock with push-to-close latch
- Hinged, removable flush cover

FINISH

- Standard: Gunsmoke Gray Powder Coated
- Optional powder coat colors and custom silkscreen printing available (*see pg. 48*)

INDUSTRY STANDARDS

- Type 1 - UL 50 and UL 50E: Intended for indoor use primarily to provide a degree of protection against limited amounts of falling dirt.
- RoHS compliant

CATALOG NUMBER	UPC (761515)	SIZE (W"xH"xD")	WGT	LIST PRICE
884TCF	20046	8x8x4	5	\$88.89
10104TCF	20050	10x10x4	8	\$160.00
10106TCF	20123	10x10x6	10	\$177.78
12124TCF	20126	12x12x4	10	\$168.89
12126TCF	20127	12x12x6	12	\$200.00
12184TCF	20166	12x18x4	15	\$231.11
12186TCF	20167	12x18x6	16	\$266.67
12244TCF	20176	12x24x4	18	\$288.89
12246TCF	20177	12x24x6	20	\$333.33
18184TCF	20296	18x18x4	18	\$311.11
18186TCF	20297	18x18x6	22	\$333.33
18244TCF	20321	18x24x4	25	\$400.00
18246TCF	20322	18x24x6	30	\$444.44
18366TCF	20350	18x36x6	45	\$475.56
24244TCF	20366	24x24x4	30	\$444.44
24246TCF	20367	24x24x6	37	\$488.89
24304TCF	20381	24x30x4	36	\$555.56
24306TCF	20382	24x30x6	45	\$577.78
24364TCF	20401	24x36x4	42	\$666.67
24366TCF	20402	24x36x6	52	\$666.67



TYPE 1 ENCLOSURES



Telephone Cabinet – Surface Mount

- Designed to enclose communication wiring, signal systems, junction or pull box and switch enclosure
- Stock inventory sizes from 8x8x4 to 24x36x6
- Custom sizes and modifications available

SPECIFICATIONS

- Manufactured from code gauge, low carbon steel
- Key lock with push-to-close latch
- Hinged, removable cover
- G90 galvanized steel version available

FINISH

- Standard: Gunsmoke Gray Powder Coated
- Optional powder coat colors and custom silkscreen printing available (see pg. 48)

INDUSTRY STANDARDS

- Type 1 - UL 50 and UL 50E: Intended for indoor use primarily to provide a degree of protection against limited amounts of falling dirt.
- RoHS compliant



Powder Coated

CATALOG NUMBER	UPC (761515)	SIZE (W"xH"xD")	WGT	LIST PRICE
884TCS	20044	8x8x4	5	\$88.89
10104TCS	20060	10x10x4	8	\$160.00
10106TCS	20125	10x10x6	10	\$177.78
12124TCS	20124	12x12x4	10	\$168.89
12126TCS	20128	12x12x6	12	\$200.00
12184TCS	20164	12x18x4	15	\$231.11
12186TCS	20168	12x18x6	16	\$266.67
12244TCS	20174	12x24x4	18	\$288.89
12246TCS	20178	12x24x6	20	\$333.33
18184TCS	20294	18x18x4	18	\$311.11
18186TCS	20298	18x18x6	22	\$333.33
18244TCS	20319	18x24x4	25	\$400.00
18246TCS	20323	18x24x6	30	\$444.44
18366TCS	20360	18x36x6	45	\$475.56
24244TCS	20364	24x24x4	30	\$444.44
24246TCS	20368	24x24x6	37	\$488.89
24304TCS	20379	24x30x4	36	\$555.56
24306TCS	20383	24x30x6	45	\$577.78
24364TCS	20399	24x36x4	42	\$666.67
24366TCS	20403	24x36x6	52	\$666.67



TYPE 1 ENCLOSURES

TYPE 3 AND 3R ENCLOSURES

CABLE MANAGEMENT SOLUTIONS

UTILITY AND STORAGE CABINETS

HARDWARE AND ACCESSORIES

CUSTOM ENCLOSURE SOLUTIONS

TYPE 3 and 3R ENCLOSURES

Screw Cover

Hinge Cover



TYPE 3 and 3R ENCLOSURES



Screw Cover – Powder Coated

- Designed for use as junction and pull boxes
- Stock inventory sizes from 4x4x4 to 48x48x18
- Custom sizes and modifications available



SPECIFICATIONS

- Manufactured from code gauge, low carbon steel
- Drip shield top, seam free sides
- Slip-on cover without gasket
- Available with and without knockouts

FINISH

- Standard: Gunsmoke Gray Powder Coated
- Optional powder coat colors and custom silkscreen printing available (see pg. 48)

INDUSTRY STANDARDS

- Type 3R - UL 50 and UL 50E: Intended for outdoor use primarily to provide a degree of protection against rain, sleet, and damage from external ice formation.
- RoHS compliant

CATALOG NUMBER	UPC (761515)	SIZE (W"xH"xD")	WGT	LIST PRICE
444RTSC	34010	4x4x4	1	\$27.56
464RTSC	34020	4x6x4	2	\$32.22
664RTSC	34050	6x6x4	3	\$32.22
684RTSC	34100	6x8x4	3	\$42.22
666RTSC	34070	6x6x6	3	\$42.22
884RTSC	34170	8x8x4	4	\$42.22
886RTSC	34200	8x8x6	5	\$54.44
10104RTSC	34280	10x10x4	6	\$60.00
10106RTSC	34300	10x10x6	7	\$71.11
12124RTSC	34380	12x12x4	8	\$73.33
12126RTSC	34390	12x12x6	10	\$88.89
12186RTSC	34510	12x18x6	14	\$120.00
CATALOG NUMBER	UPC (761515)	SIZE (W"xH"xD")	WGT	LIST PRICE
888RTSCNK	34210	8x8x8	6	\$77.78
12128RTSCNK	34410	12x12x8	11	\$108.89
121212RTSCNK	40025	12x12x12	15	\$222.22
16166RTSCNK	34600	16x16x6	14	\$168.89
18186RTSCNK	34660	18x18x6	19	\$168.89
18188RTSCNK	34680	18x18x8	20	\$200.00
181812RTSCNK	34690	18x18x12	25	\$333.33
24246RTSCNK	34790	24x24x6	30	\$297.78
24248RTSCNK	34800	24x24x8	34	\$333.33
242410RTSCNK	34810	24x24x10	37	\$400.00
242412RTSCNK	34820	24x24x12	41	\$428.18
30308RTSCNK	35020	30x30x8	51	\$577.78
303012RTSCNK	35120	30x30x12	61	\$768.89
36368RTSCNK	35040	36x36x8	73	\$800.00
363610RTSCNK	35090	36x36x10	79	\$844.44
363612RTSCNK	35140	36x36x12	87	\$888.89
363618RTSCNK	35092	36x36x18	105	\$1,144.00
484812RTSCNK	35124	48x48x12	220	\$1,563.16
484818RTSCNK	35126	48x48x18	276	\$1,920.00

WITH KNOCK-OUTS

WITHOUT KNOCK-OUTS

TYPE 1 ENCLOSURES

TYPE 3 AND 3R ENCLOSURES

CABLE MANAGEMENT SOLUTIONS

UTILITY AND STORAGE CABINETS

HARDWARE AND ACCESSORIES

CUSTOM ENCLOSURE SOLUTIONS

TYPE 3 and 3R ENCLOSURES



Screw Cover – Galvanized

- Designed for use as junction and pull boxes
- Stock inventory sizes from 4x4x4 to 48x48x18
- Custom sizes and modifications available

SPECIFICATIONS

- Manufactured from G90 galvanized steel
- Drip shield top, seam-free sides
- Slip-on cover without gasket

FINISH

- G90 galvanized steel

INDUSTRY STANDARDS

- Type 3R - UL 50 and UL 50E: Intended for outdoor use primarily to provide a degree of protection against rain, sleet, and damage from external ice formation.
- RoHS compliant

WITHOUT KNOCK-OUTS	CATALOG NUMBER	UPC (761515)	SIZE (W"xH"xD")	WGT	LIST PRICE
	444RTSCG	35300	4x4x4	1	\$27.56
664RTSCG	35303	6x6x4	3	\$32.22	
666RTSCG	35312	6x6x6	3	\$42.22	
884RTSCG	35307	8x8x4	4	\$42.22	
886RTSCG	35314	8x8x6	5	\$54.44	
10104RTSCG	35309	10x10x4	6	\$60.00	
10106RTSCG	35318	10x10x6	7	\$71.11	
12124RTSCG	35310	12x12x4	8	\$73.33	
12126RTSCG	35320	12x12x6	10	\$88.89	
12128RTSCG	35332	12x12x8	11	\$108.89	
12186RTSCG	34511	12x18x6	14	\$120.00	
16166RTSCG	35322	16x16x6	14	\$168.89	
18186RTSCG	35324	18x18x6	19	\$168.89	
18188RTSCG	35333	18x18x8	20	\$200.00	
24246RTSCG	35326	24x24x6	30	\$297.78	
24248RTSCG	35334	24x24x8	34	\$333.33	
242410RTSCG	35340	24x24x10	38	\$400.00	
242412RTSCG	35346	24x24x12	41	\$428.18	
303012RTSCG	35348	30x30x12	61	\$768.89	
36368RTSCG	35338	36x36x8	73	\$800.00	
363610RTSCG	35344	36x36x10	79	\$844.44	
363612RTSCG	35350	36x36x12	87	\$888.89	
363618RTSCG	35094	36x36x18	105	\$1,144.00	
484812RTSCG	35351	48x48x12	220	\$1,563.16	
484818RTSCG	35128	48x48x18	276	\$1,920.00	

TYPE 3 AND 3R ENCLOSURES

TYPE 3 AND 3R ENCLOSURES

CABLE MANAGEMENT SOLUTIONS

UTILITY AND STORAGE CABINETS

HARDWARE AND ACCESSORIES

CUSTOM ENCLOSURE SOLUTIONS

TYPE 3 and 3R ENCLOSURES



Powder Coated

Shoebox Gasketed Weatherproof

- Designed for use as wiring boxes, junction and pull boxes
- Stock inventory sizes from 6x6x4 to 24x24x8
- Custom sizes and modifications available

SPECIFICATIONS

- Manufactured from code gauge, low carbon steel
- Continuous welded seams are finished smooth
- Gasketed cover with flanged sides
- Cover attached with gasketed screws
- 10-32x1/2" Cu ground stud
- External mounting tabs

FINISH

- Standard: Gunsmoke Gray Powder Coated
- Optional powder coat colors and custom silkscreen printing available (see pg. 48)

INDUSTRY STANDARDS

- RoHS compliant

CATALOG NUMBER	UPC (761515)	SIZE (W"xH"xD")	WGT	LIST PRICE
664SBWP	37550	6x6x4	5	\$82.22
884SBWP	37560	8x8x4	6	\$100.00
886SBWP	37570	8x8x6	7	\$115.55
10104SBWP	37480	10x10x4	8	\$133.33
12124SBWP	37490	12x12x4	10	\$142.22
12126SBWP	37500	12x12x6	11	\$155.56
18186SBWP	37510	18x18x6	20	\$231.11
24246SBWP	37530	24x24x6	39	\$355.56
24248SBWP	37540	24x24x8	42	\$444.44



Powder Coated

Screw Cover Weatherproof

- Designed for use as wiring boxes, junction and pull boxes
- Stock inventory sizes from 6x6x4 to 24x24x8
- Custom sizes and modifications available

SPECIFICATIONS

- Manufactured from code gauge, low carbon steel or G90 galvanized
- Continuous welded seams are finished smooth
- Gasketed cover attached with 10-32 screws

FINISH

- Standard: Available in Gunsmoke Gray Powder Coated and G90 galvanized steel
- Optional powder coat colors and custom silkscreen printing available (see pg. 48)

INDUSTRY STANDARDS

- RoHS compliant

CATALOG NUMBER	UPC (761515)	SIZE (W"xH"xD")	WGT	LIST PRICE
664SCWP	37360	6x6x4	4	\$82.22
884SCWP	37440	8x8x4	5	\$100.00
886SCWP	37460	8x8x6	7	\$115.56
10104SCWP	37020	10x10x4	7	\$133.33
12124SCWP	37080	12x12x4	9	\$142.22
12126SCWP	37110	12x12x6	11	\$155.56
18186SCWP	37210	18x18x6	20	\$231.11
24246SCWP	37220	24x24x6	39	\$355.56
24248SCWP	37225	24x24x8	44	\$444.44



Galvanized

CATALOG NUMBER	UPC (761515)	SIZE (W"xH"xD")	WGT	LIST PRICE
664SCWPG	37600	6x6x4	4	\$82.22
884SCWPG	37610	8x8x4	5	\$100.00
10104SCWPG	37620	10x10x4	7	\$133.33
12124SCWPG	37630	12x12x4	9	\$142.22
12126SCWPG	37650	12x12x6	11	\$155.56
18186SCWPG	37660	18x18x6	20	\$231.11
24246SCWPG	37670	24x24x6	39	\$355.56

TYPE 1 ENCLOSURES

TYPE 3 AND 3R ENCLOSURES

CABLE MANAGEMENT SOLUTIONS

UTILITY AND STORAGE CABINETS

HARDWARE AND ACCESSORIES

CUSTOM ENCLOSURE SOLUTIONS

TYPE 3 and 3R ENCLOSURES



Hinge Cover – Powder Coated

- Designed for use as panel enclosures, junction boxes and pull boxes
- Stock inventory sizes from 8x8x4 to 20x20x8
- Custom sizes and modifications available

SPECIFICATIONS

- Manufactured from code gauge, low carbon steel
- Studs included for optional back panel
- External mounting brackets
- Padlockable pull down hasp
- Continuous hinge

FINISH

- Standard: Gunsmoke Gray Powder Coated
- Optional powder coat colors and custom silkscreen printing available (see pg. 48)

INDUSTRY STANDARDS

- Type 3R - UL 50 and UL 50E: Intended for outdoor use primarily to provide a degree of protection against rain, sleet, and damage from external ice formation.
- RoHS compliant

ACCESSORIES

CATALOG NUMBER	UPC (761515)	SIZE (W"xH"xD")	WGT	LIST PRICE	BACK PANEL	LIST PRICE
3RHC884NKPDSO-BK	60333	8x8x4	7	\$111.52	SP88-IS	\$11.25
3RHC886NKPDSO-BK	60334	8x8x6	8	\$118.52	SP88-IS	\$11.25
3RHC8106NKPDSO-BK	60340	8x10x6	10	\$133.96	SP810-IS	\$13.20
3RHC12126NKPDSO-BK	60335	12x12x6	12	\$181.16	SP1212-IS	\$21.28
3RHC12146NKPDSO-BK	60342	12x14x6	14	\$199.32	SP1214-IS	\$23.88
3RHC12166NKPDSO-BK	60336	12x16x6	15	\$235.56	SP1216-IS	\$26.84
3RHC16166NKPDSO-BK	60337	16x16x6	18	\$271.84	3SP1616-IS	\$63.56
3RHC16206NKPDSO-BK	60338	16x20x6	21	\$315.04	3SP1620-IS	\$75.52
3RHC18186NKPDSO-BK	60339	18x18x6	21	\$327.12	3SP1818-IS	\$69.20
3RHC20208NKPDSO-BK	60344	20x20x8	27	\$459.16	3SP2020-IS	\$91.16



Back Panel – White Powder Coated

- Back panel sold separately
- Manufactured from code gauge, low carbon steel
- Galvanized available

TYPE 3 AND 3R ENCLOSURES

TYPE 3 AND 3R ENCLOSURES

CABLE MANAGEMENT SOLUTIONS

UTILITY AND STORAGE CABINETS

HARDWARE AND ACCESSORIES

CUSTOM ENCLOSURE SOLUTIONS

CABLE MANAGEMENT SOLUTIONS

Type 1 Wireway
Type 1 Wireway Fittings
Type 3R Wiring Troughs





Type 1 Flat Lid Wireway – Powder Coated

- Designed to protect electrical wiring where dust, dirt, oil and water are not serious problems
- Stock inventory sizes from 4x4x12 to 12x12x120
- Custom sizes and modifications available



SPECIFICATIONS

- Manufactured from code gauge, low carbon steel
- All sections and fittings are fully open on one side so wires and cables can be laid in along an entire run. No pulling-through of wires or cables is required.
- Features screw cover flat lid with keyhole slots
- Available with and without knockouts

FINISH

- Standard: Gunsmoke Gray Powder Coated
- Optional powder coat colors and custom silkscreen printing available (see pg. 48)

INDUSTRY STANDARDS

- Type 1 - UL 870: Intended for indoor use primarily to provide a degree of protection against limited amounts of falling dirt.
- RoHS compliant

	CATALOG NUMBER	UPC (761515)	SIZE (D"xH"xL")	WGT	LIST PRICE
	WITH KNOCK-OUTS				
	4412GFL	16117	4x4x12	3	\$23.33
	4424GFL	16119	4x4x24	6	\$40.00
	4436GFL	16121	4x4x36	9	\$53.33
	4448GFL	16123	4x4x48	12	\$68.89
	4460GFL	16125	4x4x60	15	\$80.00
	6612GFL	16133	6x6x12	5	\$45.56
	6624GFL	16135	6x6x24	10	\$60.00
	6636GFL	16137	6x6x36	15	\$80.00
	6648GFL	16139	6x6x48	20	\$106.67
	6660GFL	16141	6x6x60	25	\$120.00
	WITHOUT KNOCK-OUTS				
	4412GFLNK	16116	4x4x12	3	\$23.33
	4424GFLNK	16118	4x4x24	6	\$40.00
	4436GFLNK	16120	4x4x36	9	\$53.33
	4448GFLNK	16122	4x4x48	12	\$68.89
	4460GFLNK	16124	4x4x60	15	\$80.00
	4472GFLNK	16126	4x4x72	18	\$102.22
	4496GFLNK	16128	4x4x96	24	\$164.44
	44120GFLNK	16130	4x4x120	30	\$168.89
	6612GFLNK	16132	6x6x12	5	\$45.56
	6624GFLNK	16134	6x6x24	10	\$60.00
	6636GFLNK	16136	6x6x36	15	\$80.00
	6648GFLNK	16138	6x6x48	20	\$106.67
	6660GFLNK	16140	6x6x60	25	\$120.00
	6672GFLNK	16142	6x6x72	30	\$164.44
	6696GFLNK	16144	6x6x96	40	\$244.44
	66120GFLNK	16146	6x6x120	50	\$275.56
	8812GFLNK	16150	8x8x12	6	\$75.56
	8824GFLNK	16152	8x8x24	13	\$111.11
	8836GFLNK	16154	8x8x36	19	\$168.89
	8848GFLNK	16156	8x8x48	26	\$204.44
	8860GFLNK	16158	8x8x60	33	\$235.56
	8872GFLNK	16160	8x8x72	39	\$306.67
	8896GFLNK	16162	8x8x96	52	\$444.44
	88120GFLNK	16164	8x8x120	65	\$511.11
	101012GFLNK	16165	10x10x12	9	\$102.22
	101024GFLNK	16166	10x10x24	17	\$168.89
	101036GFLNK	16168	10x10x36	25	\$244.44
	101048GFLNK	16170	10x10x48	34	\$311.11
	101060GFLNK	16172	10x10x60	42	\$355.56
	101072GFLNK	16174	10x10x72	51	\$444.44
	101096GFLNK	16176	10x10x96	68	\$577.78
	1010120GFLNK	16178	10x10x120	85	\$711.11
	121212GFLNK	16179	12x12x12	10	\$120.00
	121224GFLNK	16180	12x12x24	20	\$217.78
	121236GFLNK	16182	12x12x36	30	\$311.11
	121248GFLNK	16184	12x12x48	40	\$377.78
	121260GFLNK	16186	12x12x60	50	\$435.56
	121272GFLNK	16188	12x12x72	60	\$546.67
	121296GFLNK	16190	12x12x96	80	\$666.67
	1212120GFLNK	16192	12x12x120	100	\$888.89

TYPE 1 ENCLOSURES

TYPE 3 AND 3R ENCLOSURES

CABLE MANAGEMENT SOLUTIONS

UTILITY AND STORAGE CABINETS

HARDWARE AND ACCESSORIES

CUSTOM ENCLOSURE SOLUTIONS



Type 1 Flat Lid Wireway – Galvanized



- Designed to protect electrical wiring where dust, dirt, oil and water are not serious problems
- Stock inventory sizes from 4x4x12 to 12x12x120
- Custom sizes and modifications available

SPECIFICATIONS

- Manufactured from G90 galvanized steel
- All sections and fittings are fully open on one side so wires and cables can be laid in along an entire run. No pulling-through of wires or cables is required.
- Features screw cover flat lid with keyhole slots

FINISH

- G90 galvanized steel

INDUSTRY STANDARDS

- Type 1 - UL 870: Intended for indoor use primarily to provide a degree of protection against limited amounts of falling dirt.
- RoHS compliant

CATALOG NUMBER	UPC (761515)	SIZE (D"xH"xL")	WGT	LIST PRICE
4412GGFL	12010	4x4x12	3	\$23.33
4424GGFL	12012	4x4x24	6	\$40.00
4436GGFL	12014	4x4x36	9	\$53.33
4448GGFL	12016	4x4x48	12	\$68.89
4460GGFL	12018	4x4x60	15	\$80.00
4472GGFL	12020	4x4x72	18	\$102.22
4496GGFL	12019	4x4x96	24	\$164.44
44120GGFL	12021	4x4x120	30	\$168.89
6612GGFL	12030	6x6x12	5	\$45.56
6624GGFL	12032	6x6x24	10	\$60.00
6636GGFL	12034	6x6x36	15	\$80.00
6648GGFL	12036	6x6x48	20	\$106.67
6660GGFL	12038	6x6x60	25	\$120.00
6672GGFL	12040	6x6x72	30	\$164.44
6696GGFL	12041	6x6x96	40	\$244.44
66120GGFL	12042	6x6x120	50	\$275.56
8812GGFL	12050	8x8x12	6	\$75.56
8824GGFL	12052	8x8x24	13	\$111.11
8836GGFL	12054	8x8x36	19	\$168.89
8848GGFL	12056	8x8x48	26	\$204.44
8860GGFL	12058	8x8x60	33	\$235.56
8872GGFL	12060	8x8x72	39	\$306.67
8896GGFL	12061	8x8x96	52	\$444.44
88120GGFL	12062	8x8x120	65	\$511.11
101012GGFL	12068	10x10x12	9	\$102.22
101024GGFL	12070	10x10x24	17	\$168.89
101036GGFL	12072	10x10x36	25	\$244.44
101048GGFL	12074	10x10x48	34	\$311.11
101060GGFL	12076	10x10x60	42	\$355.56
101072GGFL	12078	10x10x72	51	\$444.44
101096GGFL	12077	10x10x96	68	\$577.78
1010120GGFL	12079	10x10x120	85	\$711.11
121212GGFL	12080	12x12x12	10	\$120.00
121224GGFL	12082	12x12x24	20	\$217.78
121236GGFL	12084	12x12x36	30	\$311.11
121248GGFL	12086	12x12x48	40	\$377.78
121260GGFL	12088	12x12x60	50	\$435.56
121272GGFL	12090	12x12x72	60	\$546.67
121296GGFL	12092	12x12x96	80	\$666.67
1212120GGFL	12091	12x12x120	100	\$844.44

WITHOUT KNOCK-OUTS

TYPE 1 ENCLOSURES

TYPE 3 AND 3R ENCLOSURES

CABLE MANAGEMENT SOLUTIONS

UTILITY AND STORAGE CABINETS

HARDWARE AND ACCESSORIES

CUSTOM ENCLOSURE SOLUTIONS



Type 1 Removable Hinge Cover Wireway

- Designed to protect electrical wiring where dust, dirt, oil and water are not serious problems
- Stock inventory sizes from 4x4x12 to 12x12x120
- Custom sizes and modifications available



Powder Coated

SPECIFICATIONS

- Manufactured from code gauge, low carbon steel
- All sections and fittings are fully open on one side so wires and cables can be laid in along an entire run. No pulling-through of wires or cables is required.
- Available with and without knockouts

FINISH

- Standard: Gunsmoke Gray Powder Coated
- Optional powder coat colors and custom silkscreen printing available (see pg. 48)

INDUSTRY STANDARDS

- Type 1 - UL 870: Intended for indoor use primarily to provide a degree of protection against limited amounts of falling dirt.
- RoHS compliant

	CATALOG NUMBER	UPC (761515)	SIZE (D"xH"xL")	WGT	LIST PRICE
	WITH KNOCK-OUTS	4412G	10080	4x4x12	3
4424G		10100	4x4x24	6	\$40.00
4436G		10110	4x4x36	9	\$53.33
4448G		10120	4x4x48	12	\$68.89
4460G		10130	4x4x60	15	\$80.00
6612G		10240	6x6x12	5	\$45.56
6624G		10260	6x6x24	10	\$60.00
6636G		10270	6x6x36	15	\$80.00
6648G		10280	6x6x48	20	\$106.67
6660G		10290	6x6x60	25	\$120.00
WITHOUT KNOCK-OUTS	4412GNK	10082	4x4x12	3	\$23.33
	4424GNK	10102	4x4x24	6	\$40.00
	4436GNK	10112	4x4x36	9	\$53.33
	4448GNK	10122	4x4x48	12	\$68.89
	4460GNK	10132	4x4x60	15	\$80.00
	4472GNK	10140	4x4x72	18	\$102.22
	4496GNK	10150	4x4x96	24	\$164.44
	44120GNK	10160	4x4x120	30	\$168.89
	6612GNK	10242	6x6x12	5	\$45.56
	6624GNK	10262	6x6x24	10	\$60.00
	6636GNK	10272	6x6x36	15	\$80.00
	6648GNK	10282	6x6x48	20	\$106.67
	6660GNK	10292	6x6x60	25	\$120.00
	6672GNK	10300	6x6x72	30	\$164.44
	6696GNK	10310	6x6x96	40	\$244.44
	66120GNK	10312	6x6x120	50	\$275.56
	8812GNK	10400	8x8x12	6	\$75.56
	8824GNK	10420	8x8x24	13	\$111.11
	8836GNK	10430	8x8x36	19	\$168.89
	8848GNK	10440	8x8x48	26	\$204.44
	8860GNK	10450	8x8x60	33	\$235.56
	8872GNK	10460	8x8x72	39	\$306.67
	8896GNK	10470	8x8x96	52	\$444.44
	88120GNK	10480	8x8x120	65	\$511.11
	101012GNK	10550	10x10x12	9	\$102.22
	101024GNK	10560	10x10x24	17	\$168.89
	101036GNK	10570	10x10x36	25	\$244.44
	101048GNK	10580	10x10x48	34	\$311.11
	101060GNK	10590	10x10x60	42	\$355.56
	101072GNK	10600	10x10x72	51	\$444.44
101096GNK	10610	10x10x96	68	\$577.78	
1010120GNK	10620	10x10x120	85	\$711.11	
121212GNK	10690	12x12x12	10	\$120.00	
121224GNK	10700	12x12x24	20	\$217.78	
121236GNK	10710	12x12x36	30	\$311.11	
121248GNK	10720	12x12x48	40	\$377.78	
121260GNK	10730	12x12x60	50	\$435.56	
121272GNK	10740	12x12x72	60	\$546.67	
121296GNK	10750	12x12x96	80	\$666.67	
1212120GNK	10760	12x12x120	100	\$888.89	

TYPE 1 ENCLOSURES

TYPE 3 AND 3R ENCLOSURES

CABLE MANAGEMENT SOLUTIONS

UTILITY AND STORAGE CABINETS

HARDWARE AND ACCESSORIES

CUSTOM ENCLOSURE SOLUTIONS



Type 1 Wireway Fittings



Reducer – Powder Coated

CATALOG NUMBER	UPC (761515)	SIZE	WGT	LIST PRICE
64R	10989	6to4	1	\$68.89
84R	10990	8to4	2	\$77.78
104R	10992	10to4	3	\$79.78
86R	10994	8to6	2	\$84.44
106R	10996	10to6	3	\$93.33
108R	10997	10to8	3	\$102.22
128R	10998	12to8	3	\$106.67
1210R	10999	12to10	3	\$133.33



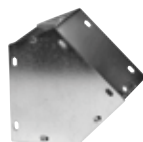
Reducer – Galvanized

CATALOG NUMBER	UPC (761515)	SIZE	WGT	LIST PRICE
64RG	38013	6to4	1	\$68.89
84RG	38015	8to4	2	\$77.78
104RG	38017	10to4	3	\$79.98
86RG	38019	8to6	2	\$84.44
106RG	38021	10to6	3	\$93.33
108RG	38023	10to8	3	\$102.22
128RG	38025	12to8	3	\$106.67
1210RG	38027	12to10	3	\$133.33



45° Elbow – Powder Coated

CATALOG NUMBER	UPC (761515)	SIZE (W"xH")	WGT	LIST PRICE
44L45	11018	4x4	2	\$53.33
66L45	11020	6x6	3	\$66.67
88L45	11022	8x8	6	\$102.22
1010L45	11024	10x10	8	\$151.11
1212L45	11026	12x12	10	\$200.00



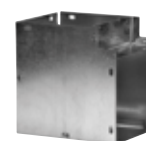
45° Elbow – Galvanized

CATALOG NUMBER	UPC (761515)	SIZE (W"xH")	WGT	LIST PRICE
44L45G	11019	4x4	2	\$53.33
66L45G	11021	6x6	3	\$66.67
88L45G	11025	8x8	6	\$102.22
1010L45G	11028	10x10	8	\$151.11
1212L45G	11029	12x12	10	\$200.00



90° Elbow – Powder Coated

CATALOG NUMBER	UPC (761515)	SIZE (W"xH")	WGT	LIST PRICE
44L	11002	4x4	3	\$54.44
66L	11006	6x6	5	\$68.89
88L	11010	8x8	8	\$102.22
1010L	11012	10x10	15	\$151.11
1212L	11014	12x12	20	\$200.00



90° Elbow – Galvanized

CATALOG NUMBER	UPC (761515)	SIZE (W"xH")	WGT	LIST PRICE
44LG	11003	4x4	3	\$54.44
66LG	11007	6x6	5	\$68.89
88LG	11011	8x8	8	\$102.22
1010LG	11013	10x10	15	\$151.11
1212LG	11015	12x12	20	\$200.00



90° Sweep Elbow – Powder Coated

CATALOG NUMBER	UPC (761515)	SIZE (W"xH")	WGT	LIST PRICE
44SL	11603	4x4	3	\$100.90
66SL	11607	6x6	6	\$115.36
88SL	11611	8x8	9	\$204.16
1010SL	11613	10x10	12	\$286.72
1212SL	11615	12x12	16	\$386.56



90° Sweep Elbow – Galvanized

CATALOG NUMBER	UPC (761515)	SIZE (W"xH")	WGT	LIST PRICE
44SLG	18002	4x4	3	\$100.90
66SLG	18003	6x6	6	\$115.36
88SLG	18004	8x8	9	\$204.16
1010SLG	18005	10x10	12	\$286.72
1212SLG	18006	12x12	16	\$386.56



Inside Outside 90° Elbow – Powder Coated

CATALOG NUMBER	UPC (761515)	SIZE (W"xH")	WGT	LIST PRICE
44INXL	11521	4x4	3	\$74.44
66INXL	11523	6x6	5	\$84.88
88INXL	11525	8x8	8	\$102.22
1010INXL	11527	10x10	15	\$151.11
1212INXL	11529	12x12	20	\$200.00



Inside Outside 90° Elbow – Galvanized

CATALOG NUMBER	UPC (761515)	SIZE (W"xH")	WGT	LIST PRICE
44INXLG	11531	4x4	3	\$74.44
66INXLG	11533	6x6	5	\$84.88
88INXLG	11535	8x8	8	\$102.22
1010INXLG	11537	10x10	15	\$151.11
1212INXLG	11539	12x12	20	\$200.00



Cross – Powder Coated

CATALOG NUMBER	UPC (761515)	SIZE (W"xH")	WGT	LIST PRICE
44X	11032	4x4	3	\$71.11
66X	11034	6x6	6	\$100.00
88X	11036	8x8	8	\$142.22
1010X	11038	10x10	15	\$222.22
1212X	11040	12x12	17	\$266.67



Cross – Galvanized

CATALOG NUMBER	UPC (761515)	SIZE (W"xH")	WGT	LIST PRICE
44XG	11033	4x4	3	\$71.11
66XG	11035	6x6	6	\$100.00
88XG	11037	8x8	8	\$142.22
1010XG	11039	10x10	15	\$222.22
1212XG	11041	12x12	17	\$266.67

TYPE 1 ENCLOSURES

TYPE 3 AND 3R ENCLOSURES

CABLE MANAGEMENT SOLUTIONS

UTILITY AND STORAGE CABINETS

HARDWARE AND ACCESSORIES

CUSTOM ENCLOSURE SOLUTIONS



Type 1 Wireway Fittings



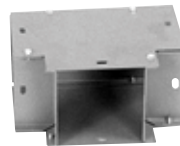
End Cap – Powder Coated

CATALOG NUMBER	UPC (761515)	SIZE (W"xH")	WGT	LIST PRICE
44E	10810	4x4	0.5	\$7.11
66E	10830	6x6	0.75	\$11.11
88E	10850	8x8	2	\$13.33
1010E	10870	10x10	2	\$24.44
1212E	10890	12x12	4	\$28.89



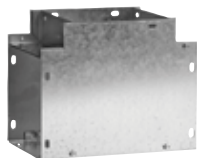
End Cap – Galvanized

CATALOG NUMBER	UPC (761515)	SIZE (W"xH")	WGT	LIST PRICE
44EG	10811	4x4	0.5	\$7.11
66EG	10831	6x6	0.75	\$11.11
88EG	10851	8x8	2	\$13.33
1010EG	10871	10x10	2	\$24.44
1212EG	10891	12x12	4	\$28.89



Tee – Powder Coated

CATALOG NUMBER	UPC (761515)	SIZE (W"xH")	WGT	LIST PRICE
44T	10972	4x4	3	\$62.22
66T	10976	6x6	5	\$86.67
88T	10980	8x8	9	\$133.33
1010T	10984	10x10	15	\$222.22
1212T	10988	12x12	20	\$284.44



Tee – Galvanized

CATALOG NUMBER	UPC (761515)	SIZE (W"xH")	WGT	LIST PRICE
44TG	10973	4x4	3	\$62.22
66TG	10974	6x6	5	\$86.67
88TG	10975	8x8	9	\$133.33
1010TG	10977	10x10	15	\$222.22
1212TG	10978	12x12	20	\$284.44



Sweep Tee – Powder Coated

CATALOG NUMBER	UPC (761515)	SIZE (W"xH")	WGT	LIST PRICE
44ST	11501	4x4	4	\$100.90
66ST	11503	6x6	6	\$115.36
88ST	11505	8x8	10	\$204.16
1010ST	11507	10x10	16	\$286.72
1212ST	11509	12x12	21	\$386.56



Sweep Tee – Galvanized

CATALOG NUMBER	UPC (761515)	SIZE (W"xH")	WGT	LIST PRICE
44STG	11511	4x4	4	\$100.90
66STG	11513	6x6	6	\$115.36
88STG	11515	8x8	10	\$204.16
1010STG	11517	10x10	16	\$286.72
1212STG	11519	12x12	21	\$386.56



Connector – Galvanized

CATALOG NUMBER	UPC (761515)	SIZE (W"xH")	WGT	LIST PRICE
44C	10901	4x4	0.4	\$7.11
66C	10903	6x6	0.5	\$11.11
88C	10905	8x8	1	\$13.33
1010C	10907	10x10	1.25	\$24.44
1212C	10909	12x12	2	\$28.89



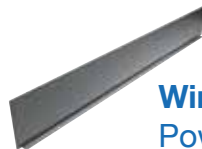
Gutter Flange – Galvanized

CATALOG NUMBER	UPC (761515)	SIZE (W"xH")	WGT	LIST PRICE
44GF	10942	4x4	0.25	\$22.22
66GF	10946	6x6	1	\$31.11
88GF	10950	8x8	1	\$44.44
1010GF	10954	10x10	1	\$66.67
1212GF	10958	12x12	1	\$88.89



Combination Hangers – Galvanized

CATALOG NUMBER	UPC (761515)	SIZE (W"xH")	WGT	LIST PRICE
24HG	47010	2x4	4.5	\$22.00
68HG	47021	6x8	8	\$30.89
1012HG	47025	10x12	17	\$77.78



Wireway Dividers – Powder Coated

CATALOG NUMBER	UPC (761515)	SIZE (W"xH")	WGT	LIST PRICE
4X60DIV	11653	4x60	4.05	\$54.04
6X60DIV	11655	6x60	5.85	\$57.92
8X60DIV	11657	8x60	7.65	\$61.80



Wireway Dividers – Galvanized

CATALOG NUMBER	UPC (761515)	SIZE (W"xH")	WGT	LIST PRICE
4X60DIVG	11654	4x60	4.05	\$54.04
6X60DIVG	11656	6x60	5.85	\$57.92
8X60DIVG	11658	8x60	7.65	\$61.80



Support Brackets

CATALOG NUMBER	UPC (761515)	SIZE (W"xH")	WGT	LIST PRICE
44SB	60420	4x4	0.4	\$17.00
66SB	60422	6x6	0.5	\$25.00
88SB	60424	8x8	0.75	\$33.00

TYPE 1 ENCLOSURES

TYPE 3 AND 3R ENCLOSURES

CABLE MANAGEMENT SOLUTIONS

UTILITY AND STORAGE CABINETS

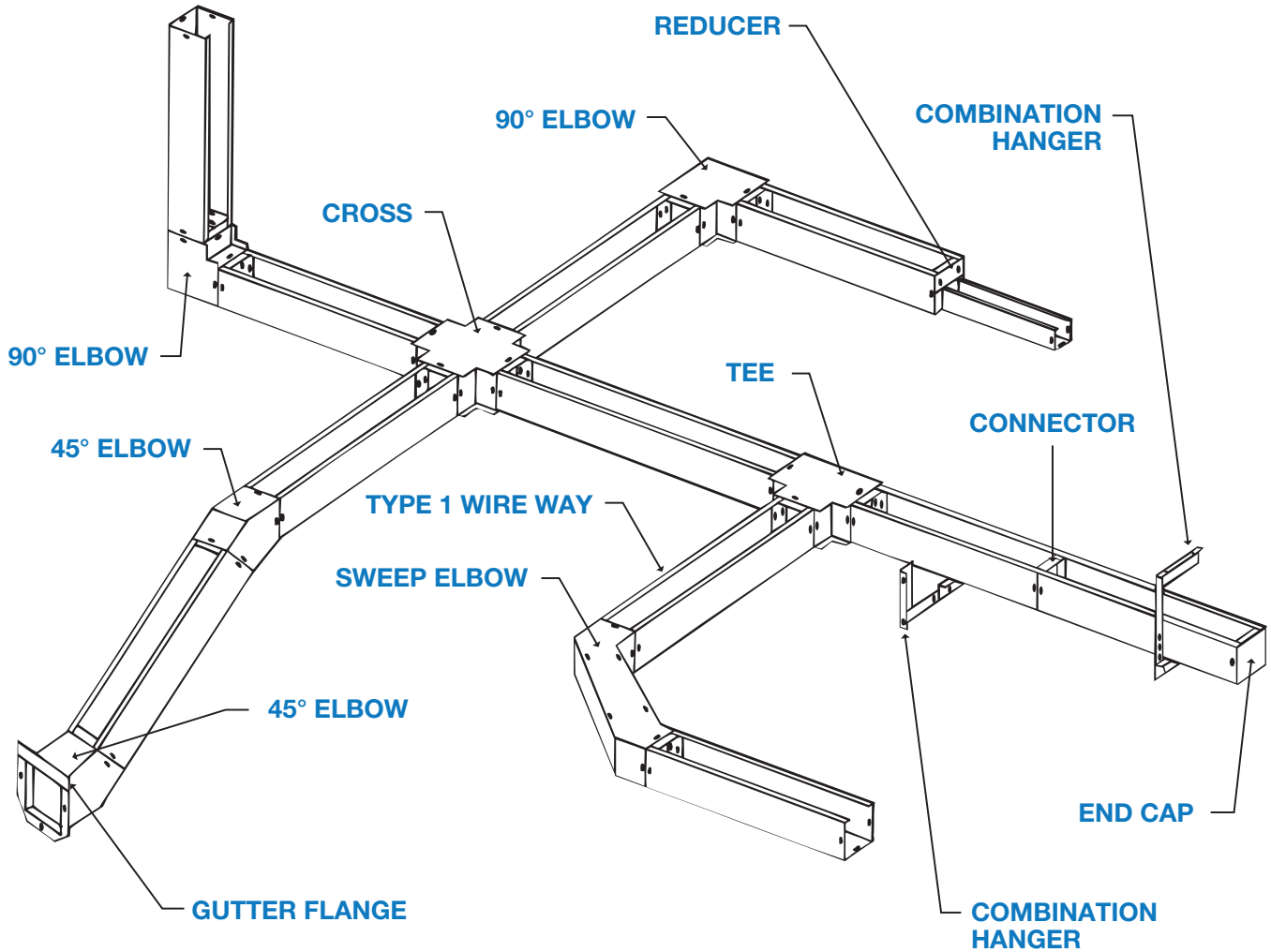
HARDWARE AND ACCESSORIES

CUSTOM ENCLOSURE SOLUTIONS

CABLE MANAGEMENT SOLUTIONS



- This drawing is for illustration purposes only and does not depict any particular installation method
- Top or bottom on all Elbows, Tees and Crosses are removable for lay-in wire or cable installation
- All Elbows, Tees and Crosses can be used in the vertical or horizontal plane
- WW covers are not shown for illustration only
- Dividers available



TYPE 1 ENCLOSURES

TYPE 3 AND 3R ENCLOSURES

CABLE MANAGEMENT SOLUTIONS

UTILITY AND STORAGE CABINETS

HARDWARE AND ACCESSORIES

CUSTOM ENCLOSURE SOLUTIONS



X-Ray Wireway & Fittings – (10-inch Width)

- Design for use with x-ray equipment to protect electrical wiring where dust, dirt, oil and water are not serious problems.
- Custom sizes and modifications available

SPECIFICATIONS

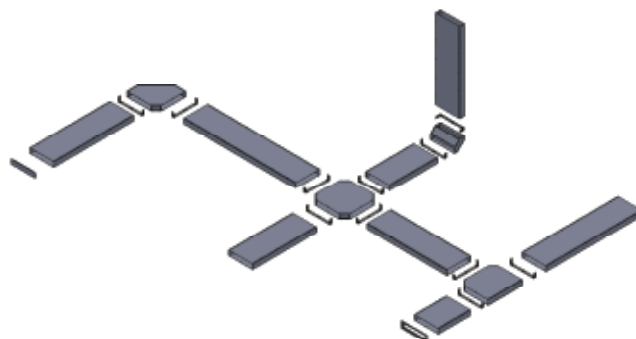
- Manufactured from code gauge, low carbon steel
- All sections and fittings are fully open on one side so wire and cables can be laid in along an entire run. No pulling through of wires or cables is required.
- Features screw cover flat lid with keyhole slots

FINISH

- Standard: Gunsmoke Gray Powder Coated
- Optional powder coat colors and custom silkscreen printing available (see pg. 48)

INDUSTRY STANDARDS

- Type 1 - UL 870
- RoHS compliant



CATALOG NUMBER	UPC (761515)	SIZE (D"xW"xL")	WGT	LIST PRICE
3.51012XRD	16200	3.5x10x12	7	\$134.64
3.51024XRD	16202	3.5x10x24	15	\$173.80
3.51036XRD	16204	3.5x10x36	22	\$258.64
3.51048XRD	16206	3.5x10x48	30	\$343.40
3.51060XRD	16208	3.5x10x60	37	\$428.20
3.51072XRD	16210	3.5x10x72	45	\$515.60
3.51084XRD	16212	3.5x10x84	52	\$600.96
3.51096XRD	16214	3.5x10x96	60	\$686.64
3.510120XRD	16216	3.5x10x120	73	\$844.76
3.5X60DIV	11617	60"Divider	5	\$65.04
3.510HL	11619	Hor.90°Elbow	8	\$253.80
3.510VL	11621	Vert.90°Elbow	7	\$209.60
3.510HT	11623	HorizontalTee	7	\$270.92
3.510VT	11625	VerticalTee	7	\$240.00
3.510X	11627	Cross	8	\$295.08
3.510E	11629	EndCap	1	\$30.04
3.510C	11631	Connector	1	\$24.00
3.510GF	11633	GutterFlange	2	\$88.44

X-Ray Wireway & Fittings – (18-inch Width)

- Design for use with x-ray equipment to protect electrical wiring where dust, dirt, oil and water are not serious problems.
- Custom sizes and modifications available

SPECIFICATIONS

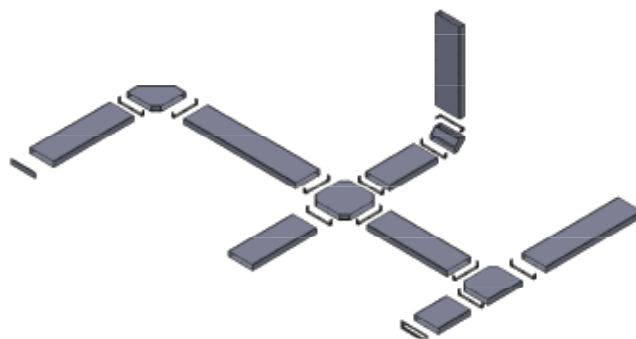
- Manufactured from code gauge, low carbon steel
- All sections and fittings are fully open on one side so wire and cables can be laid in along an entire run. No pulling through of wires or cables is required.
- Features screw cover flat lid with keyhole slots

FINISH

- Standard: Gunsmoke Gray Powder Coated
- Optional powder coat colors and custom silkscreen printing available (see pg. 48)

INDUSTRY STANDARDS

- Type 1 - UL 870
- RoHS compliant



CATALOG NUMBER	UPC (761515)	SIZE (D"xW"xL")	WGT	LIST PRICE
3.51812XRD	16218	3.5x18x12	12	\$181.64
3.51824XRD	16220	3.5x18x24	23	\$293.32
3.51836XRD	16222	3.5x18x36	35	\$350.68
3.51848XRD	16224	3.5x18x48	47	\$466.68
3.51860XRD	16226	3.5x18x60	58	\$543.56
3.51872XRD	16228	3.5x18x72	70	\$705.80
3.51884XRD	16230	3.5x18x84	81	\$823.44
3.51896XRD	16232	3.5x18x96	93	\$941.04
3.518120XRD	16234	3.5x18x120	117	\$1074.92
3.5X60DIV	11617	60"Divider	5	\$65.04
3.518HL	11635	Hor.90°Elbow	23	\$420.40
3.518VL	11637	Vert.90°Elbow	11	\$383.36
3.518HT	11639	HorizontalTee	23	\$454.80
3.518VT	11641	VerticalTee	23	\$439.28
3.518X	11643	Cross	24	\$552.00
3.518E	11645	EndCap	2	\$48.48
3.518C	11647	Connector	2	\$45.60
3.518GF	11649	GutterFlange	2	\$117.04
1810R	11651	18-to-10Reducer	3	\$118.08

TYPE 1 ENCLOSURES

TYPE 3 AND 3R ENCLOSURES

CABLE MANAGEMENT SOLUTIONS

UTILITY AND STORAGE CABINETS

HARDWARE AND ACCESSORIES

CUSTOM ENCLOSURE SOLUTIONS



Type 3R Wiring Trough – Powder Coated

- Designed to protect wiring indoors from dripping water, or outdoors from rain, sleet and snow
- Stock inventory sizes from 4x4x12 to 12x12x144
- Custom sizes and modifications available

SPECIFICATIONS

- Formed from code gauge, low carbon steel
- Drip shield top, seam-free sides
- Accumulation-free bottom
- Slip-on cover without gasket
- Embossed mounting holes provided
- **New padlock provision available on most sizes**

FINISH

- Standard: Gunsmoke Gray Powder Coated
- Optional powder coat colors and custom silkscreen printing available (*see pg. 48*)

INDUSTRY STANDARDS

- Type 3R - UL 870: Intended for outdoor use primarily to provide a degree of protection against rain, sleet, and damage from external ice formation.
- RoHS compliant

CATALOG NUMBER	UPC (761515)	SIZE (D"xH"xL")	WGT	LIST PRICE
4412GRTNK	14060	4x4x12	4	\$60.00
4424GRTNK	14070	4x4x24	7	\$88.89
4436GRTNK	14077	4x4x36	10	\$115.56
4448GRTNK	14084	4x4x48	14	\$142.22
44120GRTNK	14100	4x4x120	40	\$355.56
6612GRTNK	14181	6x6x12	6	\$84.44
6618GRTNK	14183	6x6x18	8	\$111.11
6624GRTNK	14190	6x6x24	11	\$120.00
6636GRTNK	14197	6x6x36	16	\$160.00
6648GRTNK	14204	6x6x48	21	\$200.00
6660GRTNK	14211	6x6x60	26	\$240.00
6672GRTNK	14218	6x6x72	32	\$288.89
6696GRTNK	14220	6x6x96	45	\$488.89
66120GRTNK	14222	6x6x120	53	\$577.78
8812GRTNK	14295	8x8x12	9	\$115.56
8824GRTNK	14309	8x8x24	15	\$177.78
8836GRTNK	14314	8x8x36	22	\$222.22
8848GRTNK	14321	8x8x48	28	\$311.11
8860GRTNK	14328	8x8x60	35	\$377.78
8872GRTNK	14335	8x8x72	42	\$435.56
8896GRTNK	14340	8x8x96	50	\$622.22
88120GRTNK	14350	8x8x120	60	\$822.22
101024GRTNK	14424	10x10x24	20	\$266.67
101036GRTNK	14426	10x10x36	28	\$355.56
101048GRTNK	14433	10x10x48	37	\$444.44
101060GRTNK	14440	10x10x60	45	\$533.33
101072GRTNK	14447	10x10x72	60	\$622.22
101096GRTNK	14449	10x10x96	85	\$800.00
1010120GRTNK	14450	10x10x120	100	\$1066.67
121224GRTNK	14473	12x12x24	25	\$311.11
121236GRTNK	14475	12x12x36	35	\$488.89
121248GRTNK	14482	12x12x48	45	\$577.78
121260GRTNK	14489	12x12x60	60	\$777.78
121272GRTNK	14496	12x12x72	70	\$844.44
121296GRTNK	14498	12x12x96	85	\$1044.44
1212120GRTNK	14499	12x12x120	110	\$1222.22
1212144GRTNK	14500	12x12x144	153	\$1622.22

TYPE 3R ENCLOSURES

TYPE 3 AND 3R ENCLOSURES

CABLE MANAGEMENT SOLUTIONS

UTILITY AND STORAGE CABINETS

HARDWARE AND ACCESSORIES

CUSTOM ENCLOSURE SOLUTIONS



Type 3R Wiring Trough – Galvanized

- Designed to protect wiring indoors from dripping water, or outdoors from rain, sleet and snow
- Stock inventory sizes from 4x4x12 to 12x12x144
- Custom sizes and modifications available



SPECIFICATIONS

- Formed from G90 galvanized steel
- Drip shield top, seam-free sides and accumulation-free bottom
- Slip-on cover without gasket
- Embossed mounting holes provided
- **New padlock provision available on most sizes**

FINISH

- G90 galvanized steel

INDUSTRY STANDARDS

- Type 3R - UL 870: Intended for outdoor use primarily to provide a degree of protection against rain, sleet, and damage from external ice formation.
- RoHS compliant

CATALOG NUMBER	UPC (761515)	SIZE (D"xH"xL")	WGT	LIST PRICE
4412GRTG	15500	4x4x12	4	\$60.00
4424GRTG	15502	4x4x24	7	\$88.89
4436GRTG	15504	4x4x36	10	\$115.56
4448GRTG	15506	4x4x48	14	\$142.22
44120GRTG	14101	4x4x120	40	\$355.56
6612GRTG	15510	6x6x12	6	\$84.44
6618GRTG	14185	6x6x18	8	\$111.11
6624GRTG	15512	6x6x24	11	\$115.56
6636GRTG	15514	6x6x36	16	\$164.44
6648GRTG	15516	6x6x48	21	\$200.00
6660GRTG	15518	6x6x60	26	\$244.44
6672GRTG	14219	6x6x72	32	\$288.89
6696GRTG	14221	6x6x96	45	\$488.88
66120GRTG	14223	6x6x120	53	\$577.78
8812GRTG	14296	8x8x12	9	\$115.56
8824GRTG	15520	8x8x24	15	\$177.78
8836GRTG	15522	8x8x36	22	\$222.22
8848GRTG	15524	8x8x48	28	\$311.11
8860GRTG	15526	8x8x60	35	\$377.78
8872GRTG	14336	8x8x72	42	\$435.56
8896GRTG	14341	8x8x96	50	\$622.22
88120GRTG	14352	8x8x120	60	\$822.22
101024GRTG	14425	10x10x24	20	\$266.67
101036GRTG	14427	10x10x36	28	\$355.56
101048GRTG	14434	10x10x48	37	\$444.44
101060GRTG	14441	10x10x60	45	\$533.33
101072GRTG	14448	10x10x72	60	\$622.22
101096GRTG	14452	10x10x96	85	\$800.00
1010120GRTG	14451	10x10x120	100	\$1,066.67
121224GRTG	14474	12x12x24	25	\$311.11
121236GRTG	14476	12x12x36	35	\$488.89
121248GRTG	15532	12x12x48	45	\$577.78
121260GRTG	15534	12x12x60	60	\$777.78
121272GRTG	15536	12x12x72	70	\$844.44
121296GRTG	15538	12x12x96	85	\$1044.44
1212120GRTG	15540	12x12x120	110	\$1222.22
1212144GRTG	15542	12x12x144	153	\$1622.22

TYPE 1 ENCLOSURES

TYPE 3 AND 3R ENCLOSURES

CABLE MANAGEMENT SOLUTIONS

UTILITY AND STORAGE CABINETS

HARDWARE AND ACCESSORIES

CUSTOM ENCLOSURE SOLUTIONS

UTILITY AND STORAGE CABINETS

Current Transformer Cabinets

AEP Approved CT Cans

Type 3R Telco Boxes

Spare Fuse Cabinets





Type 1 CT Cabinets – Single Door (Powder Coated)

- Designed for use in a wide variety of applications including transformer housing, junction and service enclosures
- Many sizes, styles, back panel and customization options available



Padlock Handle



Locking T-Handle

SPECIFICATIONS

- Manufactured from code gauge, low carbon steel
- Single door hinged construction, standard enclosure is hinged on left side
- Padlock handle or Locking T-handle, 3-pt locking mechanism included on all 48" tall enclosures
- Studs installed for mounting optional back panel
- Mounting holes provided

FINISH

- Standard: Gunsmoke Gray Powder Coated
- Optional powder coat colors and custom silkscreen printing available (see pg. 48)

INDUSTRY STANDARDS

- Type 1 - UL 50 and UL 50E: Intended for indoor use primarily to provide a degree of protection against limited amounts of falling dirt.
- RoHS compliant

ACCESSORIES



Back Panel – White Powder Coated

- Back panel sold separately
- Manufactured from code gauge, low carbon steel

	CATALOG NUMBER	UPC (761515)	SIZE (W"xH"xD")	WGT	LIST PRICE	BACK PANEL	LIST PRICE
	PADLOCK HANDLE	1SDCT242410PLH	60400	24x24x10	51	\$593.00	SP2424-IS
1SDCT242412PLH		60406	24x24x12	55	\$608.76	SP2424-IS	\$135.72
1SDCT243612PLH		60408	24x36x12	73	\$730.04	SP2436-IS	\$197.08
1SDCT303010PLH		60402	30x30x10	80	\$761.48	SP3030-IS	\$231.88
1SDCT303012PLH		60410	30x30x12	85	\$783.80	SP3030-IS	\$231.88
1SDCT303612PLH		60412	30x36x12	97	\$858.88	SP3036-IS	\$262.84
1SDCT363610PLH		60404	36x36x10	105	\$925.04	SP3636-IS	\$308.08
1SDCT363612PLH		60414	36x36x12	112	\$951.20	SP3636-IS	\$308.08
1SDCT364812PLH3		60416	36x48x12	139	\$1,232.48	SP3648-IS	\$399.28
1SDCT363618PLH		60420	36x36x18	132	\$1,129.04	SP3636-IS	\$308.08
1SDCT364818PLH3		60422	36x48x18	162	\$1,446.12	SP3648-IS	\$399.28
1SDCT484812PLH3		60418	48x48x12	215	\$1,724.88	SP4848-IS	\$552.28
1SDCT484818PLH3		60424	48x48x18	249	\$1,931.96	SP4848-IS	\$552.28

	CATALOG NUMBER	UPC (761515)	SIZE (W"xH"xD")	WGT	LIST PRICE	BACK PANEL	LIST PRICE
	LOCKING T-HANDLE	1SDCT242410LTH	33983	24x24x10	51	\$593.00	SP2424-IS
1SDCT242412LTH		33986	24x24x12	55	\$608.76	SP2424-IS	\$135.72
1SDCT243612LTH		33987	24x36x12	73	\$730.04	SP2436-IS	\$197.08
1SDCT303010LTH		33984	30x30x10	80	\$761.48	SP3030-IS	\$231.88
1SDCT303012LTH		33988	30x30x12	85	\$783.80	SP3030-IS	\$231.88
1SDCT303612LTH		33989	30x36x12	97	\$858.88	SP3036-IS	\$262.84
1SDCT363610LTH		33985	36x36x10	105	\$925.04	SP3636-IS	\$308.08
1SDCT363612LTH		33990	36x36x12	112	\$951.20	SP3636-IS	\$308.08
1SDCT364812LTH3		33991	36x48x12	139	\$1,232.48	SP3648-IS	\$399.28
1SDCT363618LTH		33993	36x36x18	132	\$1,129.04	SP3636-IS	\$308.08
1SDCT364818LTH3		33994	36x48x18	162	\$1,446.12	SP3648-IS	\$399.28
1SDCT484812LTH3		33992	48x48x12	215	\$1,724.88	SP4848-IS	\$552.28
1SDCT484818LTH3		33995	48x48x18	249	\$1,931.96	SP4848-IS	\$552.28

TYPE 1 ENCLOSURES

TYPE 3 AND 3R ENCLOSURES

CABLE MANAGEMENT SOLUTIONS

UTILITY AND STORAGE CABINETS

HARDWARE AND ACCESSORIES

CUSTOM ENCLOSURE SOLUTIONS



Padlock Handle



Locking T-Handle

Type 3R CT Cabinets – Single Door (Powder Coated)

- Designed for use in a wide variety of applications including transformer housing, junction and service enclosures
- Many sizes, styles, back panel and customization options available

SPECIFICATIONS

- Manufactured from code gauge, low carbon steel
- Single door hinged construction, standard enclosure is hinged on left side
- Padlock handle or Locking T-handle, 3-pt locking mechanism included on all 48” tall enclosures
- Studs installed for mounting optional back panel
- Mounting holes provided

FINISH

- Standard: Gunsmoke Gray Powder Coated
- Optional powder coat colors and custom silkscreen printing available (see pg. 48)

INDUSTRY STANDARDS

- Type 3R - UL 50 and UL 50E: Intended for outdoor use primarily to provide a degree of protection against rain, sleet, and damage from external ice formation.
- RoHS compliant

ACCESSORIES



Back Panel – White Powder Coated

- Back panel sold separately
- Manufactured from code gauge, low carbon steel

PADLOCK HANDLE	CATALOG NUMBER	UPC (761515)	SIZE (W”xH”xD”)	WGT	LIST PRICE	BACK PANEL	LIST PRICE
	3RSDCT242410PLH	60444	24x24x10	51	\$622.00	SP2424-IS	\$135.72
	3RSDCT242412PLH	60450	24x24x12	55	\$637.76	SP2424-IS	\$135.72
	3RSDCT243612PLH	60452	24x36x12	73	\$759.04	SP2436-IS	\$197.08
	3RSDCT303010PLH	60446	30x30x10	80	\$797.48	SP3030-IS	\$231.88
	3RSDCT303012PLH	60454	30x30x12	85	\$819.80	SP3030-IS	\$231.88
	3RSDCT303612PLH	60456	30x36x12	97	\$894.88	SP3036-IS	\$262.84
	3RSDCT363610PLH	60448	36x36x10	105	\$968.04	SP3636-IS	\$308.08
	3RSDCT363612PLH	60458	36x36x12	112	\$994.20	SP3636-IS	\$308.08
	3RSDCT364812PLH3	60460	36x48x12	139	\$1,275.48	SP3648-IS	\$399.28
	3RSDCT363618PLH	60464	36x36x18	132	\$1,172.04	SP3636-IS	\$308.08
	3RSDCT364818PLH3	60466	36x48x18	162	\$1,489.12	SP3648-IS	\$399.28
	3RSDCT484812PLH3	60462	48x48x12	215	\$1,780.88	SP4848-IS	\$552.28
3RSDCT484818PLH3	60468	48x48x18	249	\$1,987.96	SP4848-IS	\$552.28	

LOCKING T-HANDLE	CATALOG NUMBER	UPC (761515)	SIZE (W”xH”xD”)	WGT	LIST PRICE	BACK PANEL	LIST PRICE
	3RSDCT242410LTH	33940	24x24x10	51	\$622.00	SP2424-IS	\$135.72
	3RSDCT242412LTH	33946	24x24x12	55	\$637.76	SP2424-IS	\$135.72
	3RSDCT243612LTH	33948	24x36x12	73	\$759.04	SP2436-IS	\$197.08
	3RSDCT303010LTH	33942	30x30x10	80	\$797.48	SP3030-IS	\$231.88
	3RSDCT303012LTH	33950	30x30x12	85	\$819.80	SP3030-IS	\$231.88
	3RSDCT303612LTH	33952	30x36x12	97	\$894.88	SP3036-IS	\$262.84
	3RSDCT363610LTH	33944	36x36x10	105	\$968.04	SP3636-IS	\$308.08
	3RSDCT363612LTH	33954	36x36x12	112	\$994.20	SP3636-IS	\$308.08
	3RSDCT364812LTH3	33956	36x48x12	139	\$1,275.48	SP3648-IS	\$399.28
	3RSDCT363618LTH	33960	36x36x18	132	\$1,172.04	SP3636-IS	\$308.08
	3RSDCT364818LTH3	33962	36x48x18	162	\$1,489.12	SP3648-IS	\$399.28
	3RSDCT484812LTH3	33958	48x48x12	215	\$1,780.88	SP4848-IS	\$552.28
3RSDCT484818LTH3	33964	48x48x18	249	\$1,987.96	SP4848-IS	\$552.28	

TYPE ENCLCSURES

TYPE 3 AND 3R ENCLCSURES

CABLE MANAGEMENT SOLUTIONS

UTILITY AND STORAGE CABINETS

HARDWARE AND ACCESSORIES

CUSTOM ENCLOSURE SOLUTIONS



Type 1 CT Cabinets – Double Door (Powder Coated)

- Designed for use in a wide variety of applications including transformer housing, junction and service enclosures
- Many sizes, styles, back panel and customization options available

SPECIFICATIONS

- Manufactured from code gauge, low carbon steel
- Double door hinged construction
- 3-pt Padlock handle or 3-pt Locking T-handle included
- Studs installed for mounting optional back panel
- Mounting holes provided

FINISH

- Standard: Gunsmoke Gray Powder Coated
- Optional powder coat colors and custom silkscreen printing available (see pg. 48)

INDUSTRY STANDARDS

- Type 1 - UL 50 and UL 50E: Intended for indoor use primarily to provide a degree of protection against limited amounts of falling dirt.
- RoHS compliant

ACCESSORIES



Back Panel – White Powder Coated

- Back panel sold separately
- Manufactured from code gauge, low carbon steel



Padlock Handle



Locking T-Handle

PADLOCK HANDLE	CATALOG NUMBER	UPC (761515)	SIZE (W"xH"xD")	WGT	LIST PRICE	BACK PANEL	LIST PRICE
	1DDCT363610PLH3	60429	36x36x10	109	\$1,290.60	SP3636-IS	\$308.08
1DDCT363612PLH3	60433	36x36x12	115	\$1,316.76	SP3636-IS	\$308.08	
1DDCT364812PLH3	60434	36x48x12	142	\$1,461.32	SP3648-IS	\$399.28	
1DDCT363618PLH3	60439	36x36x18	135	\$1,516.48	SP3636-IS	\$308.08	
1DDCT364818PLH3	60440	36x48x18	166	\$1,695.28	SP3648-IS	\$399.28	
1DDCT484812PLH3	60436	48x48x12	220	\$1,929.76	SP4848-IS	\$552.28	
1DDCT484818PLH3	60442	48x48x18	251	\$2,155.08	SP4848-IS	\$552.28	

LOCKING T-HANDLE	CATALOG NUMBER	UPC (761515)	SIZE (W"xH"xD")	WGT	LIST PRICE	BACK PANEL	LIST PRICE
	1DDCT363610LTH3	33997	36x36x10	109	\$1,290.60	SP3636-IS	\$308.08
1DDCT363612LTH3	33999	36x36x12	115	\$1,316.76	SP3636-IS	\$308.08	
1DDCT364812LTH3	33400	36x48x12	142	\$1,461.32	SP3648-IS	\$399.28	
1DDCT363618LTH3	33402	36x36x18	135	\$1,516.48	SP3636-IS	\$308.08	
1DDCT364818LTH3	33403	36x48x18	166	\$1,695.28	SP3648-IS	\$399.28	
1DDCT484812LTH3	33401	48x48x12	220	\$1,929.76	SP4848-IS	\$552.28	
1DDCT484818LTH3	33404	48x48x18	251	\$2,155.08	SP4848-IS	\$552.28	

TYPE 1 ENCLOSURES

TYPE 3 AND 3R ENCLOSURES

CABLE MANAGEMENT SOLUTIONS

UTILITY AND STORAGE CABINETS

HARDWARE AND ACCESSORIES

CUSTOM ENCLOSURE SOLUTIONS



Padlock Handle



Locking T-Handle

Type 3R CT Cabinets – Double Door (Powder Coated)

- Designed for use in a wide variety of applications including transformer housing, junction and service enclosures
- Many sizes, styles, back panel and customization options available

SPECIFICATIONS

- Manufactured from code gauge, low carbon steel
- Double door hinged construction
- 3-pt Padlock handle or 3-pt Locking T-handle included
- Studs installed for mounting optional back panel
- Mounting holes provided

FINISH

- Standard: Gunsmoke Gray Powder Coated
- Optional powder coat colors and custom silkscreen printing available (see pg. 48)

INDUSTRY STANDARDS

- Type 3R - UL 50 and UL 50E: Intended for outdoor use primarily to provide a degree of protection against rain, sleet, and damage from external ice formation.
- RoHS compliant

ACCESSORIES



Back Panel – White Powder Coated

- Back panel sold separately
- Manufactured from code gauge, low carbon steel

PADLOCK HANDLE	CATALOG NUMBER	UPC (761515)	SIZE (W"xH"xD")	WGT	LIST PRICE	BACK PANEL	LIST PRICE
	3RDDCT363610PLH3	60472	36x36x10	109	\$1,333.60	SP3636-IS	\$308.08
	3RDDCT363612PLH3	60476	36x36x12	115	\$1,359.76	SP3636-IS	\$308.08
	3RDDCT364812PLH3	60478	36x48x12	142	\$1,504.32	SP3648-IS	\$399.28
	3RDDCT363618PLH3	60482	36x36x18	135	\$1,559.48	SP3636-IS	\$308.08
	3RDDCT364818PLH3	60484	36x48x18	166	\$1,738.28	SP3648-IS	\$399.28
	3RDDCT484812PLH3	60480	48x48x12	220	\$1,985.76	SP4848-IS	\$552.28
	3RDDCT484818PLH3	60486	48x48x18	251	\$2,211.08	SP4848-IS	\$552.28

LOCKING T-HANDLE	CATALOG NUMBER	UPC (761515)	SIZE (W"xH"xD")	WGT	LIST PRICE	BACK PANEL	LIST PRICE
	3RDDCT363610LTH3	33968	36x36x10	109	\$1,333.60	SP3636-IS	\$308.08
	3RDDCT363612LTH3	33972	36x36x12	115	\$1,359.76	SP3636-IS	\$308.08
	3RDDCT364812LTH3	33974	36x48x12	142	\$1,504.32	SP3648-IS	\$399.28
	3RDDCT363618LTH3	33978	36x36x18	135	\$1,559.48	SP3636-IS	\$308.08
	3RDDCT364818LTH3	33980	36x48x18	166	\$1,738.28	SP3648-IS	\$399.28
	3RDDCT484812LTH3	33976	48x48x12	220	\$1,985.76	SP4848-IS	\$552.28
	3RDDCT484818LTH3	33982	48x48x18	251	\$2,211.08	SP4848-IS	\$552.28

TYPE ENCLCSURES

TYPE 3 AND 3R ENCLCSURES

CABLE MANAGEMENT SOLUTIONS

UTILITY AND STORAGE CABINETS

HARDWARE AND ACCESSORIES

CUSTOM ENCLCSURE SOLUTIONS



Type 1 CT Cabinets – Single Door (Galvanized)

- Designed for use in a wide variety of applications including transformer housing, junction and service enclosures
- Many sizes, styles, back panel and customization options available



Padlock Handle



Locking T-Handle

SPECIFICATIONS

- Manufactured from G90 galvanized steel
- Single door hinged construction, standard enclosure is hinged on left side
- Padlock handle or Locking T-handle, 3-pt locking mechanism included on all 48" tall enclosures
- Studs installed for mounting optional back panel
- Mounting holes provided

FINISH

- G90 galvanized steel

INDUSTRY STANDARDS

- Type 1 - UL 50 and UL 50E: Intended for indoor use primarily to provide a degree of protection against limited amounts of falling dirt.
- RoHS compliant

ACCESSORIES



Back Panel – Galvanized

- Back panel sold separately
- Manufactured from G90 galvanized steel

	CATALOG NUMBER	UPC (761515)	SIZE (W"xH"xD")	WGT	LIST PRICE	BACK PANEL	LIST PRICE
PADLOCK HANDLE	1SDCTG242410PLH	60576	24x24x10	51	\$593.00	GP2424-IS	\$135.72
	1SDCTG242412PLH	60582	24x24x12	55	\$608.76	GP2424-IS	\$135.72
	1SDCTG243612PLH	60584	24x36x12	73	\$730.04	GP2436-IS	\$197.08
	1SDCTG303010PLH	60578	30x30x10	80	\$761.48	GP3030-IS	\$231.88
	1SDCTG303012PLH	60586	30x30x12	85	\$783.80	GP3030-IS	\$231.88
	1SDCTG303612PLH	60588	30x36x12	97	\$858.88	GP3036-IS	\$262.84
	1SDCTG363610PLH	60580	36x36x10	105	\$925.04	GP3636-IS	\$308.08
	1SDCTG363612PLH	60590	36x36x12	112	\$951.20	GP3636-IS	\$308.08
	1SDCTG364812PLH3	60592	36x48x12	139	\$1,232.48	GP3648-IS	\$399.28
	1SDCTG363618PLH	60596	36x36x18	132	\$1,129.04	GP3636-IS	\$308.08
	1SDCTG364818PLH3	60598	36x48x18	162	\$1,446.12	GP3648-IS	\$399.28
	1SDCTG484812PLH3	60594	48x48x12	215	\$1,724.88	GP4848-IS	\$552.28
	1SDCTG484818PLH3	60600	48x48x18	249	\$1,931.96	GP4848-IS	\$552.28

	CATALOG NUMBER	UPC (761515)	SIZE (W"xH"xD")	WGT	LIST PRICE	BACK PANEL	LIST PRICE
LOCKING T-HANDLE	1SDCTG242410LTH	60488	24x24x10	51	\$593.00	GP2424-IS	\$135.72
	1SDCTG242412LTH	60494	24x24x12	55	\$608.76	GP2424-IS	\$135.72
	1SDCTG243612LTH	60496	24x36x12	73	\$730.04	GP2436-IS	\$197.08
	1SDCTG303010LTH	60490	30x30x10	80	\$761.48	GP3030-IS	\$231.88
	1SDCTG303012LTH	60498	30x30x12	85	\$783.80	GP3030-IS	\$231.88
	1SDCTG303612LTH	60500	30x36x12	97	\$858.88	GP3036-IS	\$262.84
	1SDCTG363610LTH	60492	36x36x10	105	\$925.04	GP3636-IS	\$308.08
	1SDCTG363612LTH	60502	36x36x12	112	\$951.20	GP3636-IS	\$308.08
	1SDCTG364812LTH3	60504	36x48x12	139	\$1,232.48	GP3648-IS	\$399.28
	1SDCTG363618LTH	60508	36x36x18	132	\$1,129.04	GP3636-IS	\$308.08
	1SDCTG364818LTH3	60510	36x48x18	162	\$1,446.12	GP3648-IS	\$399.28
	1SDCTG484812LTH3	60506	48x48x12	215	\$1,724.88	GP4848-IS	\$552.28
	1SDCTG484818LTH3	60512	48x48x18	249	\$1,931.96	GP4848-IS	\$552.28



Type 3R CT Cabinets – Single Door (Galvanized)

- Designed for use in a wide variety of applications including transformer housing, junction and service enclosures
- Many sizes, styles, back panel and customization options available



Padlock Handle



Locking T-Handle

SPECIFICATIONS

- Manufactured from G90 galvanized steel
- Single door hinged construction, standard enclosure is hinged on left side
- Padlock handle or Locking T-handle, 3-pt locking mechanism included on all 48” tall enclosures
- Studs installed for mounting optional back panel
- Mounting holes provided

FINISH

- G90 galvanized steel

INDUSTRY STANDARDS

- Type 3R - UL 50 and UL 50E: Intended for outdoor use primarily to provide a degree of protection against rain, sleet, and damage from external ice formation.
- RoHS compliant

ACCESSORIES



Back Panel – Galvanized

- Back panel sold separately
- Manufactured from G90 galvanized steel

PADLOCK HANDLE	CATALOG NUMBER	UPC (761515)	SIZE (W"xH"xD")	WGT	LIST PRICE	BACK PANEL	LIST PRICE
	3RSDCTG242410PLH	60620	24x24x10	51	\$622.00	GP2424-IS	\$135.72
	3RSDCTG242412PLH	60626	24x24x12	55	\$637.76	GP2424-IS	\$135.72
	3RSDCTG243612PLH	60628	24x36x12	73	\$759.04	GP2436-IS	\$197.08
	3RSDCTG303010PLH	60622	30x30x10	80	\$797.48	GP3030-IS	\$231.88
	3RSDCTG303012PLH	60630	30x30x12	85	\$819.80	GP3030-IS	\$231.88
	3RSDCTG303612PLH	60632	30x36x12	97	\$894.88	GP3036-IS	\$262.84
	3RSDCTG363610PLH	60624	36x36x10	105	\$968.04	GP3636-IS	\$308.08
	3RSDCTG363612PLH	60634	36x36x12	112	\$994.20	GP3636-IS	\$308.08
	3RSDCTG364812PLH3	60636	36x48x12	139	\$1,275.48	GP3648-IS	\$399.28
3RSDCTG363618PLH	60640	36x36x18	132	\$1,172.04	GP3636-IS	\$308.08	
3RSDCTG364818PLH3	60642	36x48x18	162	\$1,489.12	GP3648-IS	\$399.28	
3RSDCTG484812PLH3	60638	48x48x12	215	\$1,780.88	GP4848-IS	\$552.28	
3RSDCTG484818PLH3	60644	48x48x18	249	\$1,987.96	GP4848-IS	\$552.28	

LOCKING T-HANDLE	CATALOG NUMBER	UPC (761515)	SIZE (W"xH"xD")	WGT	LIST PRICE	BACK PANEL	LIST PRICE
	3RSDCTG242410LTH	60532	24x24x10	51	\$622.00	GP2424-IS	\$135.72
	3RSDCTG242412LTH	60538	24x24x12	55	\$637.76	GP2424-IS	\$135.72
	3RSDCTG243612LTH	60540	24x36x12	73	\$759.04	GP2436-IS	\$197.08
	3RSDCTG303010LTH	60534	30x30x10	80	\$797.48	GP3030-IS	\$231.88
	3RSDCTG303012LTH	60542	30x30x12	85	\$819.80	GP3030-IS	\$231.88
	3RSDCTG303612LTH	60544	30x36x12	97	\$894.88	GP3036-IS	\$262.84
	3RSDCTG363610LTH	60536	36x36x10	105	\$968.04	GP3636-IS	\$308.08
	3RSDCTG363612LTH	60546	36x36x12	112	\$994.20	GP3636-IS	\$308.08
	3RSDCTG364812LTH3	60548	36x48x12	139	\$1,275.48	GP3648-IS	\$399.28
	3RSDCTG363618LTH	60552	36x36x18	132	\$1,172.04	GP3636-IS	\$308.08
	3RSDCTG364818LTH3	60554	36x48x18	162	\$1,489.12	GP3648-IS	\$399.28
	3RSDCTG484812LTH3	60550	48x48x12	215	\$1,780.88	GP4848-IS	\$552.28
3RSDCTG484818LTH3	60556	48x48x18	249	\$1,987.96	GP4848-IS	\$552.28	

UTILITY AND STORAGE CABINETS



Type 1 CT Cabinets – Double Door (Galvanized)

- Designed for use in a wide variety of applications including transformer housing, junction and service enclosures
- Many sizes, styles, back panel and customization options available



Padlock Handle



Locking T-Handle

SPECIFICATIONS

- Manufactured from G90 galvanized steel
- Double door hinged construction
- Padlock handle or Locking T-handle, 3-pt locking mechanism included on all 48” tall enclosures
- Studs installed for mounting optional back panel
- Mounting holes provided

FINISH

- G90 galvanized steel

INDUSTRY STANDARDS

- Type 1 - UL 50 and UL 50E: Intended for indoor use primarily to provide a degree of protection against limited amounts of falling dirt.
- RoHS compliant

ACCESSORIES



Back Panel – Galvanized

- Back panel sold separately
- Manufactured from G90 galvanized steel

	CATALOG NUMBER	UPC (761515)	SIZE (W"xH"xD")	WGT	LIST PRICE	BACK PANEL	LIST PRICE
PADLOCK HANDLE	1DDCTG363610PLH3	60604	36x36x10	109	\$1,290.60	GP3636-IS	\$308.08
	1DDCTG363612PLH3	60608	36x36x12	115	\$1,316.76	GP3636-IS	\$308.08
	1DDCTG364812PLH3	60610	36x48x12	142	\$1,461.32	GP3648-IS	\$399.28
	1DDCTG363618PLH3	60614	36x36x18	135	\$1,516.48	GP3636-IS	\$308.08
	1DDCTG364818PLH3	60616	36x48x18	166	\$1,695.28	GP3648-IS	\$399.28
	1DDCTG484812PLH3	60612	48x48x12	220	\$1,929.76	GP4848-IS	\$552.28
1DDCTG484818PLH3	60618	48x48x18	251	\$2,155.08	GP4848-IS	\$552.28	

	CATALOG NUMBER	UPC (761515)	SIZE (W"xH"xD")	WGT	LIST PRICE	BACK PANEL	LIST PRICE
LOCKING T-HANDLE	1DDCTG363610LTH3	60516	36x36x10	109	\$1,290.60	GP3636-IS	\$308.08
	1DDCTG363612LTH3	60520	36x36x12	115	\$1,316.76	GP3636-IS	\$308.08
	1DDCTG364812LTH3	60522	36x48x12	142	\$1,461.32	GP3648-IS	\$399.28
	1DDCTG363618LTH3	60526	36x36x18	135	\$1,516.48	GP3636-IS	\$308.08
	1DDCTG364818LTH3	60528	36x48x18	166	\$1,695.28	GP3648-IS	\$399.28
	1DDCTG484812LTH3	60524	48x48x12	220	\$1,929.76	GP4848-IS	\$552.28
	1DDCTG484818LTH3	60530	48x48x18	251	\$2,155.08	GP4848-IS	\$552.28

TYPE 1 ENCLOSURES

TYPE 3 AND 3R ENCLOSURES

CABLE MANAGEMENT SOLUTIONS

UTILITY AND STORAGE CABINETS

HARDWARE AND ACCESSORIES

CUSTOM ENCLOSURE SOLUTIONS



Padlock Handle



Locking T-Handle

Type 3R CT Cabinets – Double Door (Galvanized)

- Designed for use in a wide variety of applications including transformer housing, junction and service enclosures
- Many sizes, styles, back panel and customization options available

SPECIFICATIONS

- Manufactured from G90 galvanized steel
- Double door hinged construction
- Padlock handle or Locking T-handle, 3-pt locking mechanism included on all 48” tall enclosures
- Studs installed for mounting optional back panel
- Mounting holes provided

FINISH

- G90 galvanized steel

INDUSTRY STANDARDS

- Type 3R - UL 50 and UL 50E: Intended for outdoor use primarily to provide a degree of protection against rain, sleet, and damage from external ice formation.
- RoHS compliant

ACCESSORIES



Back Panel – Galvanized

- Back panel sold separately
- Manufactured from G90 galvanized steel

PADLOCK HANDLE	CATALOG NUMBER	UPC (761515)	SIZE (W"xH"xD")	WGT	LIST PRICE	BACK PANEL	LIST PRICE
	3RDDCTG363610PLH3	60648	36x36x10	109	\$1,333.60	GP3636-IS	\$308.08
3RDDCTG363612PLH3	60652	36x36x12	115	\$1,359.76	GP3636-IS	\$308.08	
3RDDCTG364812PLH3	60654	36x48x12	142	\$1,504.32	GP3648-IS	\$399.28	
3RDDCTG363618PLH3	60658	36x36x18	135	\$1,559.48	GP3636-IS	\$308.08	
3RDDCTG364818PLH3	60660	36x48x18	166	\$1,738.28	GP3648-IS	\$399.28	
3RDDCTG484812PLH3	60656	48x48x12	220	\$1,985.76	GP4848-IS	\$552.28	
3RDDCTG484818PLH3	60662	48x48x18	251	\$2,211.08	GP4848-IS	\$552.28	

LOCKING T-HANDLE	CATALOG NUMBER	UPC (761515)	SIZE (W"xH"xD")	WGT	LIST PRICE	BACK PANEL	LIST PRICE
	3RDDCTG363610LTH3	60560	36x36x10	109	\$1,333.60	GP3636-IS	\$308.08
3RDDCTG363612LTH3	60564	36x36x12	115	\$1,359.76	GP3636-IS	\$308.08	
3RDDCTG364812LTH3	60566	36x48x12	142	\$1,504.32	GP3648-IS	\$399.28	
3RDDCTG363618LTH3	60570	36x36x18	135	\$1,559.48	GP3636-IS	\$308.08	
3RDDCTG364818LTH3	60572	36x48x18	166	\$1,738.28	GP3648-IS	\$399.28	
3RDDCTG484812LTH3	60568	48x48x12	220	\$1,985.76	GP4848-IS	\$552.28	
3RDDCTG484818LTH3	60574	48x48x18	251	\$2,211.08	GP4848-IS	\$552.28	

TYPE ENCLCSURES

TYPE 3 AND 3R ENCLCSURES

CABLE MANAGEMENT SOLUTIONS

UTILITY AND STORAGE CABINETS

HARDWARE AND ACCESSORIES

CUSTOM ENCLOSURE SOLUTIONS



Type 3R AEP Approved CT Cans

- Designed to meet American Electric Power standards for current transformer enclosures
- Many sizes, styles, back panel and customization options available

SPECIFICATIONS

- Manufactured from code gauge G90 galvanized steel and powder coated
- Single door construction for 36x36 enclosure. Double door construction for 48x48 and 60x60 enclosures.
- Padlockable hasp
- 3/4" treated wood back panel installed
- American Electric Power-approved current transformer enclosure

FINISH

- Standard: Gunsmoke Gray Powder Coated

INDUSTRY STANDARDS

- Type 3R - UL 50 and UL 50E: Intended for outdoor use primarily to provide a degree of protection against rain, sleet, and damage from external ice formation.



Powder Coated

CATALOG NUMBER	UPC (761515)	SIZE (W"xH"xD")	WGT	LIST PRICE
AEP363612SDCT3	33930	36x36x12	130	\$1300.00
AEP484812DDCT3	33932	48x48x12	300	\$1920.00
AEP606015DDCT3	33934	60x60x15	472	\$5032.00



TYPE 1 ENCLOSURES

TYPE 3 AND 3R ENCLOSURES

CABLE MANAGEMENT SOLUTIONS

UTILITY AND STORAGE CABINETS

HARDWARE AND ACCESSORIES

CUSTOM ENCLOSURE SOLUTIONS



Powder Coated

Type 3R Telco Boxes

- Designed for use in a wide variety of applications including telephone cabinets, transformer housing, junction and service enclosures
- Custom sizes and modifications available

SPECIFICATIONS

- Manufactured from code gauge, low carbon steel
- Hinged doors
- Locking T-handle, 3-pt locking mechanism included on all 48" tall enclosures
- Single door construction up to 36x36 enclosure. Double door construction for 48x48 and 60x60 enclosures.
- Plywood back panel installed

FINISH

- Standard: Gunsmoke Gray Powder Coated
- Optional powder coat colors and custom silkscreen printing available (see pg. 48)

INDUSTRY STANDARDS

- Type 3R - UL 50 and UL 50E: Intended for outdoor use primarily to provide a degree of protection against rain, sleet, and damage from external ice formation.
- RoHS compliant

CATALOG NUMBER	UPC (761515)	SIZE (W"xH"xD")	WGT	LIST PRICE
T24246SDCT3P	33887	24x24x6	45	\$700.00
T242412SDCT3P	33889	24x24x12	58	\$1080.00
T303012SDCT3P	33891	30x30x12	100	\$1240.00
T303612SDCT3P	33893	30x36x12	120	\$1400.00
T363612SDCT3P	33895	36x36x12	135	\$1480.00
T364812SDCT3P	33897	36x48x12	170	\$1740.00
T484812DDCT3P	33899	48x48x12	265	\$1940.00
T484816DDCT3P	33901	48x48x16	295	\$2240.00

TYPE ENCLOSURES

TYPE 3 AND 3R ENCLOSURES

CABLE MANAGEMENT SOLUTIONS

UTILITY AND STORAGE CABINETS

HARDWARE AND ACCESSORIES

CUSTOM ENCLOSURE SOLUTIONS

Spare Fuse Cabinets



- Provides secure shelved environment for the storage of spare fuses and other items
- Many sizes, styles and customization options available

SPECIFICATIONS

- Manufactured from code gauge, low carbon steel
- Features continuous hinge from top of enclosure to bottom
- Keyhole-style holes on 16" centers for easy wall stud mounting
- Convenient inventory card pocket on inside of door
- Two reinforced shelves
- Individually packaged for quick UPS delivery

FINISH

- Standard: Gunsmoke Gray Powder Coated
- G90 galvanized steel version available
- Optional powder coat colors and custom silkscreen printing available (see pg. 48)

INDUSTRY STANDARDS

- RoHS compliant



Powder Coated

CATALOG NUMBER	UPC (761515)	SIZE (W"xH"xD")	WGT	LIST PRICE
SFC	32090	24x30x12	70	\$777.80





Drip Shields for CT Cans

- Designed to protect door hardware from dripping water or settling dust
- Converts Current Transformer Cabinets from Type 1 to Type 3R



SPECIFICATIONS

- Manufactured from code gauge, low carbon steel or G90 galvanized steel
- Easily installed by drilling holes in the top of the enclosure
- 10-32 self-tapping screws provided for mounting
- Installation instructions included

FINISH

- Standard: Gunsmoke Gray Powder Coated or G90 galvanized steel
- Optional powder coat colors and custom silkscreen printing available (see pg. 48)

Powder Coated

CATALOG NUMBER	UPC (761515)	SIZE	WGT	LIST PRICE
DS24	60350	24"	8	\$85.60
DS30	60352	30"	9	\$99.91
DS36	60354	36"	10	\$117.02
DS48	60356	48"	17	\$129.80

Galvanized

CATALOG NUMBER	UPC (761515)	SIZE	WGT	LIST PRICE
DSG24	60358	24"	8	\$85.60
DSG30	60360	30"	9	\$99.91
DSG36	60362	36"	10	\$117.02
DSG48	60364	48"	17	\$129.80

Floor Stand Kits

- Designed for use with Type 1 and Type 3R Current Transformer Cabinets where floor support is required
- Custom sizes and modifications available



SPECIFICATIONS

- Floor stand kits are 6 and 12 inches tall
- Easily installed by drilling holes in the bottom of the enclosure
- Hardware is provided for mounting to the enclosure
- Manufactured from 12-gauge steel
- Kit includes two stands

FINISH

- Standard: Gunsmoke Gray Powder Coated
- Galvanized available

CATALOG NUMBER	UPC (761515)	SIZE (W"xH")	WGT	LIST PRICE
FS610	60374	6x10	10	\$161.20
FS612	60376	6x12	11	\$169.88
FS618	60378	6x18	14	\$192.88
FS1210	60380	12x10	15	\$188.96
FS1212	60382	12x12	17	\$199.04
FS1218	60384	12x18	21	\$226.40

HARDWARE AND ACCESSORIES

Back Panels

Hardware

Hole Seals

Louver Plate Kits

Touch-up Paint





Back Panel – White Powder Coated

- Back panel sold separately
- Manufactured from code gauge, low carbon steel

CATALOG NUMBER	UPC (761515)	SIZE (W"xH")	WGT	LIST PRICE
SP88-IS	24402	6.25x6.25	1	\$11.25
SP1010-IS	24405	8.25x8.25	1	\$15.40
SP1012-IS	24408	8.25x10.25	1	\$17.88
SP1212-IS	24411	10.25x10.25	2	\$21.28
SP1216-IS	24414	10.25x14.25	3	\$26.84
1SP1616-IS	24417	14.5x13	4	\$32.92
1SP1620-IS	24420	14.5x17	5	\$40.52
1SP2024-IS	24423	18.5x21	8	\$62.08
3SP1616-IS	24418	13x13	4	\$63.56
3SP1620-IS	24421	13x17	5	\$75.52
3SP2024-IS	24424	17x21	8	\$117.96
SP2424-IS	24426	21x21	10	\$135.72
SP2430-IS	24429	21x27	13	\$164.72
SP2436-IS	24432	21x33	16	\$197.08
SP3030-IS	24435	27x27	18	\$231.88
SP3036-IS	24438	27x33	22	\$262.84
SP3636-IS	24441	33x33	27	\$308.08
SP3648-IS	24444	33x45	36	\$399.28
SP4848-IS	24447	44x44	61	\$552.28



Back Panel – Galvanized

- Back panel sold separately
- Manufactured from G90 galvanized steel

CATALOG NUMBER	UPC (761515)	SIZE (W"xH")	WGT	LIST PRICE
GP88-IS	24470	6.25x6.25	1	\$11.25
GP1010-IS	24474	8.25x8.25	1	\$15.40
GP1012-IS	24478	8.25x10.25	1	\$17.88
GP1212-IS	24482	10.25x10.25	2	\$21.28
GP1216-IS	24486	10.25x14.25	3	\$26.84
1GP1616-IS	24490	14.5x13	4	\$32.92
1GP1620-IS	24494	14.5x17	5	\$40.52
1GP2024-IS	24500	18.5x21	8	\$62.08
3GP1616-IS	24492	13x13	4	\$63.56
3GP1620-IS	24496	13x17	5	\$75.52
3GP2024-IS	24504	17x21	8	\$117.96
GP2424-IS	24508	21x21	10	\$135.72
GP2430-IS	24512	21x27	13	\$164.72
GP2436-IS	24516	21x33	16	\$197.08
GP3030-IS	24520	27x27	18	\$231.88
GP3036-IS	24524	27x33	22	\$262.84
GP3636-IS	24528	33x33	27	\$308.08
GP3648-IS	24532	33x45	36	\$399.28
GP4848-IS	24536	44x44	61	\$552.28



TYPE 1 ENCLOSURES

TYPE 3 AND 3R ENCLOSURES

CABLE MANAGEMENT SOLUTIONS

UTILITY AND STORAGE CABINETS

HARDWARE AND ACCESSORIES

CUSTOM ENCLOSURE SOLUTIONS



Hardware



Small Hasp & Staple

- Light-duty hasp and staple

CATALOG NUMBER	LIST PRICE
HHAS003	\$12.00



Large Hasp & Staple

- 3-1/2" Stainless Steel Hasp

CATALOG NUMBER	LIST PRICE
HHAS004	\$24.00



Small Pull Down Hasp

- Padlockable, zinc-plated pull down hasp

CATALOG NUMBER	LIST PRICE
HHAS005	\$12.00



Large Pull Down Hasp

- Padlockable, zinc-plated pull down hasp

CATALOG NUMBER	LIST PRICE
HHAS002	\$24.00



Coin Latch

- 1/4-turn screwdriver turn latch

CATALOG NUMBER	LIST PRICE
HLOC012	\$12.00



1/4-turn Knob

- Inner door 1/4-turn knob

CATALOG NUMBER	LIST PRICE
HHAN007	\$16.00



Cylinder Key Lock

- 751-keyed cylinder lock

CATALOG NUMBER	LIST PRICE
HLOC003	\$12.00



Pad Lock Handle

- Stainless steel pad locking handle

CATALOG NUMBER	LIST PRICE
HHAN004	\$52.00

TYPE 1 ENCLOSURES

TYPE 3 AND 3R ENCLOSURES

CABLE MANAGEMENT SOLUTIONS

UTILITY AND STORAGE CABINETS

HARDWARE AND ACCESSORIES

CUSTOM ENCLOSURE SOLUTIONS



Hardware

TYPE 1 ENCLOSURES

TYPE 3 AND 3R ENCLOSURES

CABLE MANAGEMENT SOLUTIONS

UTILITY AND STORAGE CABINETS

HARDWARE AND ACCESSORIES

CUSTOM ENCLOSURE SOLUTIONS



Non-locking T-handle

- Non-locking, 90° Turn T-Handle

CATALOG NUMBER	LIST PRICE
HHAN008	\$24.00



Locking T-handle

- Key-locking, 90° Turn T-Handle

CATALOG NUMBER	LIST PRICE
HHAN003	\$24.00



Padlockable Quarter Turn Latch

- Padlockable thumb turn latch
- Accepts multiple padlock sizes

CATALOG NUMBER	LIST PRICE
HLOC013	\$24.00



Quad Lock

- Key-locking, 1/4-turn wing knob latch

CATALOG NUMBER	LIST PRICE
HLOC009	\$24.00



Key Lock Push-to-Close Latch

- Left-hand panel board latch
- Right-hand version available upon request

CATALOG NUMBER	LIST PRICE
HLOC010	\$36.00



Tamper-resistant Screw

- Stainless steel tamper-resistant button head cap screw
- Pin-In-Hex Socket drive type
- Sockets available*

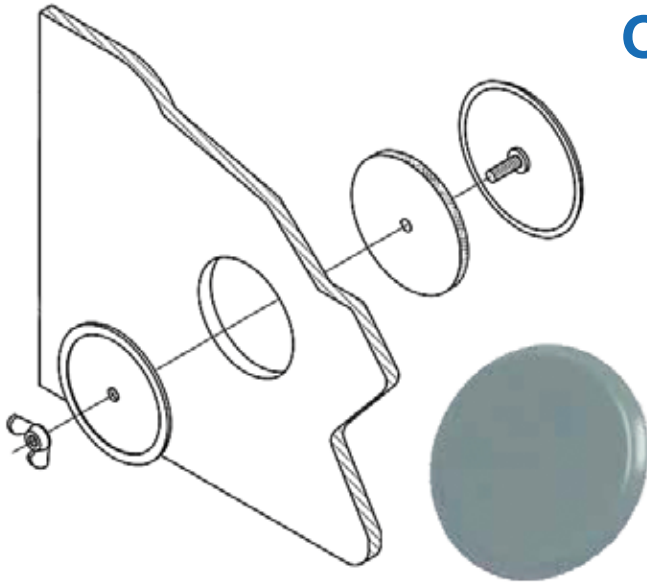
CATALOG NUMBER	SIZE (W"xH"xD")	LIST PRICE
HSCR012	10/32 x 1/2	\$1.80



3pt Lock Mechanism

- Complete door hardware set with 3pt lock mechanism
- Multiple sizes available based on size of enclosure*

*Please contact your local sales representative



Oil-Tight Hole Seals

- Protects knockout openings and extra push-button or conduit openings from dirt, oil, dust and water.
- Steel, ANSI 61 Gray Painted
- Stainless steel available upon request

CATALOG NUMBER	UPC (761515)	MAX. HOLE DIAMETER	HOLE SEAL DIAMETER	CTN QTY	LIST PRICE
UHS50	60001	0.88	1.38	10	\$11.20
UHS75	60003	1.06	1.56	10	\$14.12
UHS100	60005	1.38	1.88	10	\$19.48
UHS125	60007	1.69	2.19	5	\$21.72
UHS150	60009	2.00	2.5	5	\$24.80
UHS200	60011	2.50	3	5	\$27.32
UHS250	60013	3.00	3.5	5	\$34.80
UHS300	60015	3.62	4.12	1	\$45.84
UHS350	60017	4.12	4.62	1	\$59.60
UHS400	60019	4.62	5.12	1	\$76.44

Louver Plate Kits

- Designed to provide ventilation in enclosures where overheating and excessive moisture is an issue
- Manufactured from 14 gauge steel
- Kits are field installed by making the cutout to the specified size and bolting into place
- Mounting hardware and instructions included
- Gunsmoke Gray Powder Coated

CATALOG NUMBER	UPC (761515)	SIZE (W"xH")	WGT	LIST PRICE
LVK0304	60430	4.75x4.25	0.30	\$30.56
LVK0404	60432	5.63x5.5	0.50	\$44.24
LVK0604	60434	5.63x7.5	0.64	\$40.60
LVK0606	60436	7.88x8.5	0.90	\$49.68
LVK0806	60438	8.19x10.5	1.20	\$74.96



Gunsmoke Gray Touch-up Paint

- Gunsmoke Gray touch-up spray paint
- Other touch-up paint colors available

CATALOG NUMBER	UPC (761515)	SIZE	WGT	LIST PRICE
SPG	17990	12oz	0.75	\$44.00

CUSTOM ENCLOSURE SOLUTIONS





Custom Engineered Solutions for Your Custom Enclosure Needs

When you're looking for innovative enclosure solutions to improve labor efficiency, or meet job- or industry-specific requirements, our engineering team can help translate your ideas into reality.

TYPE 1 ENCLOSURES

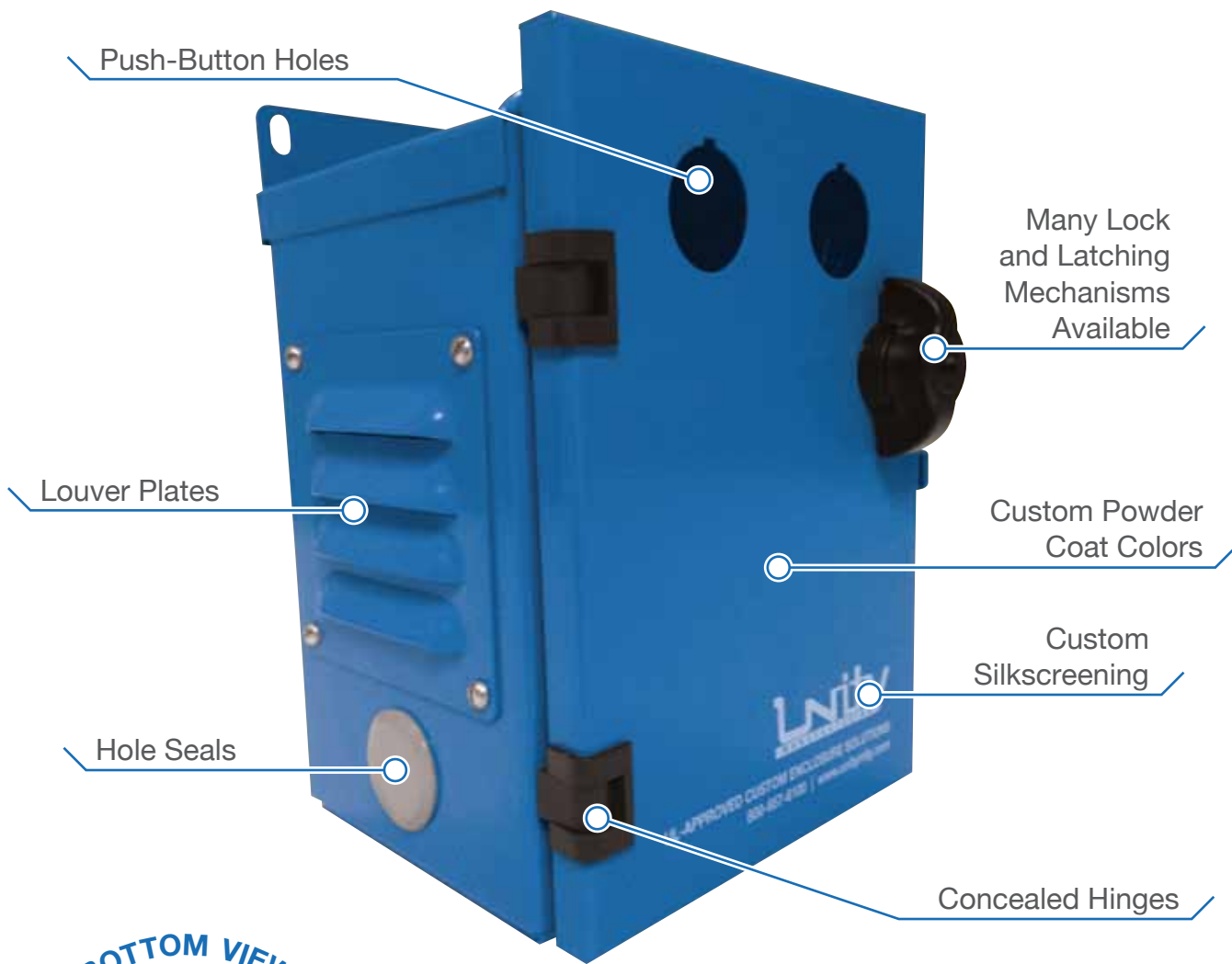
TYPE 3 AND 3R ENCLOSURES

CABLE MANAGEMENT SOLUTIONS

UTILITY AND STORAGE CABINETS

HARDWARE AND ACCESSORIES

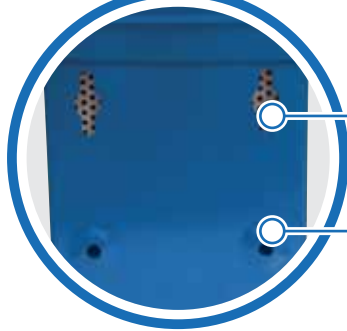
CUSTOM ENCLOSURE SOLUTIONS



CUSTOM ENCLOSURE SOLUTIONS



BACK VIEW

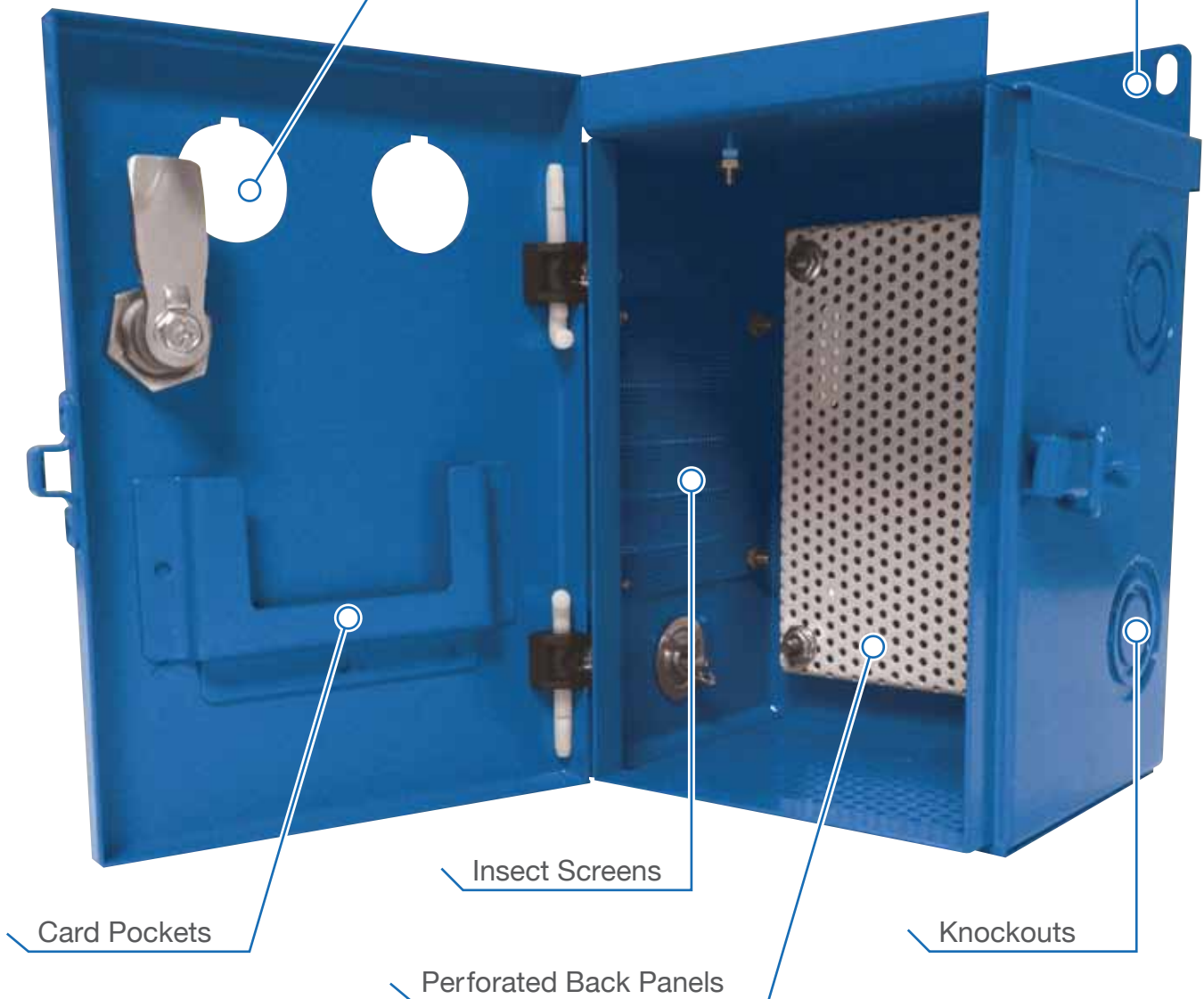


Keyslot Mounting Holes

Raised Mounting Holes

Push-Button Holes

Mounting Flanges



Card Pockets

Insect Screens

Perforated Back Panels

Knockouts

see full list of capabilities & industries served
and powder coating color options



TYPE 1
ENCLOSURES

TYPE 3 AND 3R
ENCLOSURES

CABLE MANAGEMENT
SOLUTIONS

UTILITY AND
STORAGE CABINETS

HARDWARE AND
ACCESSORIES

CUSTOM ENCLOSURE
SOLUTIONS

CUSTOM ENCLOSURE SOLUTIONS



Unity Manufacturing offers robust custom manufacturing capabilities. From modification of our stock product line to engineered-to-order, Unity's team of engineers can custom tailor an enclosure solution to your exact specifications.

CAPABILITIES

- High Volume Stamping
- Conveyorized and Batch Powder Coating
- Custom Silkscreen Printing
- Louvers and Vents
- Knockouts
- Custom Powder Coat Colors
- Various Latching Mechanisms
- UL-Approved (US and Canada)
- Custom Holes, Cutouts and Push-Button Holes
- Removable Hinge Covers
- Wood, Metal and Perforated Metal Backpanels
- AutoCAD, SolidWorks and CAD Software
- CAD File Conversion
- Design and Engineering
- Low-to-High Volume
- Tooling Design
- Large Enclosures
- Technical Support
- Laser
- Mig/Tig Weld

INDUSTRIES SERVED

- Medical
- Oil and Gas
- Irrigation System
- Security and Fire Alarm
- Pool and Spa
- Energy Saving
- HVAC Control
- Transformer Enclosures
- Environmental
- Government Jobs
- Public Transportation
- Motor Controls
- Elevator
- Landscape Lighting
- Warehouse Automation
- Telecom

For more information about Unity Manufacturing's custom enclosure capabilities, visit us online at www.unitymfg.com or call 800-667-6100.

Powder Coating Color Options

Unity Manufacturing and TCI Powder Coatings have teamed up to create an extensive line of stock powder coating colors, metallics, textures and special effects. The general paint description and/or RAL# are provided below. Custom Powder Coating can assist you in choosing the correct coating and color for your application.

For additional custom colors options, specialty services and choosing the correct coating and color for your application, please contact Unity Manufacturing to learn how we can meet your professional powder coating needs!



*Colors presented are provided for general color information and illustration purposes only. For actual color representation, please verify your selected color with a powder coated sample panel, paint specification (paint manufacturer and paint number), RAL# or paint chip sample.

TERMS AND CONDITIONS



UNITY ENCLOSURES are sold through wholesale distributors nationwide.

TERMS: Two percent (2%) 10th prox net 30 days. All orders shipped by the 25th of the month are payable on the 10th of the following month.

MINIMUM BILLING: One hundred dollars (\$100.00) Net plus transportation charge.

ERRORS: All clerical errors subject to correction.

FREIGHT: Liberal freight terms, consult factory. There will be a \$5.00 handling charge for all prepay and charge shipments.

LOSS OR DAMAGE IN TRANSIT: Our responsibility ceases with delivery to the carrier, at which time title passes to the purchaser and all claims for loss, damage or delay must be made to the carrier by the purchaser.

SHIPPING SCHEDULES: Published lead times and estimated shipping dates are only approximate based on the normal uninterrupted flow of production activity and are in no way guaranteed.

RETURN POLICY: No goods may be returned without first obtaining our express written permission. Goods that arrive without permission will be refused and returned to the shipper. Only standard catalog items will be considered for return. Items must be of current design and in resalable condition, which were shipped not more than one year prior to date of return request. Return shipment must be on a prepaid freight basis. Only a credit memo can be issued for return goods and this memo will be subject to a deduction for outgoing freight similar to that of the return cost, a 20% restocking charge and the cost of any rework required.

CANCELLATION: An order once placed with us and accepted by us can be cancelled only with our express written consent and upon terms that will indemnify the company. Orders for SPECIALS, or standard goods in quantities larger than normal inventory, may NOT be cancelled once order is placed in production.

SPECIALS: Unity Manufacturing welcomes the opportunity to quote on your special enclosure needs. Many custom features can be provided. Purchase orders received for non-catalog items are not cancelable and after shipment may not be returned.

PRICES: Unity Manufacturing reserves the right to change the prices, specifications, materials or the availability of products without prior notice. Unity Manufacturing is not responsible for inaccuracies resulting from undetected errors, omissions or price discrepancies. Prices effective August 1, 2014.

WARRANTY: Unity Manufacturing warrants that its products shall be free from defects in material for a period of one year from date of shipment from its plant. If after our inspection a defect is revealed, Unity Manufacturing will not be held responsible for (1) any amount beyond the price of the product, (2) any unauthorized repair. This warranty shall not apply to any product that shows evidence of neglect, misuse or misinstallation, or that has been repaired or altered by any party other than this company. This warranty is and shall be in lieu of all other warranties, expressed or implied.

All products manufactured in the U.S.A. Commercial and Government Entity (CAGE) Code OHTC9.

UL TYPE RATINGS

- **TYPE 1:** Intended for indoor use primarily to provide a degree of protection against limited amounts of falling dirt.
- **TYPE 3:** Intended for outdoor use primarily to provide a degree of protection against rain, sleet, wind blown dust and damage from external ice formation.
- **TYPE 3R:** Intended for outdoor use primarily to provide a degree of protection against rain, sleet, and damage from external ice formation.

MEMBER OF NEMRA

Unity Manufacturing is a proud member of the **National Electrical Manufacturers Representatives Association**, a trade association of independent sales representatives in the electrical industry organized to promote the advantages of doing business with independent sales representatives.





**CORPORATE OFFICE AND
MANUFACTURING PLANT**

210 E Buckingham Rd
Garland, TX 75040

Main Phone 972-272-9502
Toll-Free Phone 800-657-6100
Toll-Free Fax 800-677-5269

orders@unitymfg.com
www.unitymfg.com