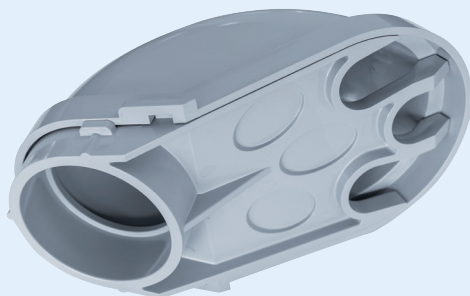





Features and Benefits:

- smaller compact design that is lighter, for easier installation
- easy snap-in assembly



Standards:

 UL 651
CSA C22.2 No. 85-14

KRALOY

Service Entrance Fittings Redesigned for 2-1/2" to 4"

Kraloy[®] rigid service entrance fittings are suitable for overhead service drop entry points. Our service entrance fittings have been redesigned, featuring a new compact design with a snap-in assembly. While previously heavy and bulky, the redesigned fittings are sleek and lightweight for ease of installation. These new service entrance fittings will be available in 2-1/2" to 4" sizes.

All 2-1/2" to 4" sizes are UL listed and CSA certified so you can expect the same level of quality that is synonymous with the Kraloy brand. 1/2" to 2" sizes are still available in the original fitting design.

Size	NEW Product Code	OLD Product Code
2-1/2"	178688	078308
3"	178689	078309
3-1/2"	178690	078310
4"	178691	078311

Contact us: Toll free: (800) 265-1815 | kraloyfittings.com